

# THE MAKE-UP OF STATE GOVERNMENT

Where the workers are by location and department

By **TIFFANY WADEL**

In 2015, state government made up 7.6 percent of all Alaska employment and 7.9 percent of wages. (See Exhibit 1.) That equates to 25,778 jobs and \$1.4 billion in wages, spread across every borough and census area in Alaska except Kusilvak.

## University, HSS, and DOT are the largest

Roughly 29 percent of all state government employment was in the University of Alaska system, more than double that of the next-biggest component, Health and Social Services. (See Exhibit 2.)

HSS administers public health services throughout the state, so like the university, it has a presence in most of the state's boroughs and census areas. In terms of numbers, half of HSS jobs are in Anchorage, but the university has the largest slice of its employment in Fairbanks, where its systems offices are located. (See Exhibit 3.)

Third-largest is the Department of Transportation and Public Facilities, which also has workers spread across the state because its regulation and administration of

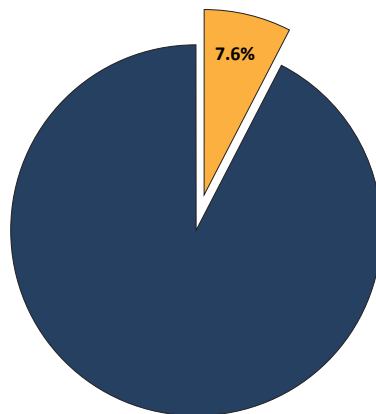
transportation programs require a presence in every area with transportation projects: 28 out of 29 boroughs and census areas. DOT&PF is also most concentrated in urban areas — nearly a third of its jobs are in Anchorage — because operations are scaled based on population.

Together, the three largest departments account for 54 percent of all state government employment and 50 percent of its wages.

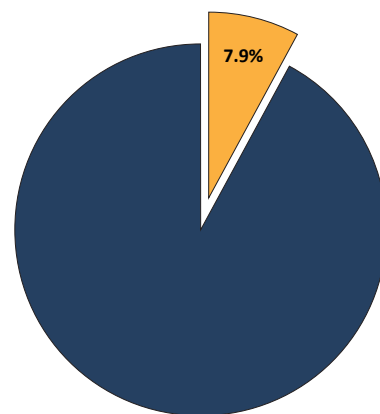
## 1 State Government's Slice of Jobs, Wages

SHARE OF ALASKA TOTAL, 2015

Share of Alaska Employment



Share of Alaska Wages



Source: Alaska Department of Labor and Workforce Development, Research and Analysis Section

Employment doesn't necessarily reflect the size of a department's budget, however, nor its full impact on an area's economy. For example, the Department of Education has only about 1 percent of state government jobs, but its funding is the largest slice of the state's operating budget. That's largely because education money goes to local school districts, so the vast majority of people working in education work for local governments.

## Anchorage has the most jobs

Anchorage has about 40.5 percent of the state's population, and it has a similar share of state government at 41 percent. (See Exhibit 4.)

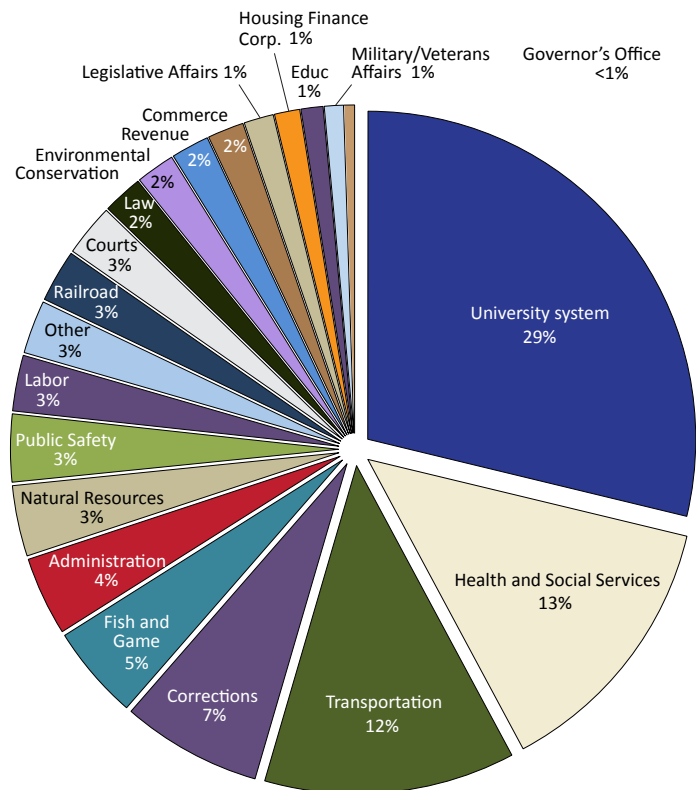
Fairbanks has just 13.4 percent of the state's population but 20 percent of state government, mainly due to its large university campus.

Juneau is even more dependent on state government. As the capital city, it has just 4.5 percent of the population but 16 percent of state government jobs.

# 2

## University System Has the Most Jobs

SHARE OF STATE GOVERNMENT JOBS BY DEPARTMENT, 2015

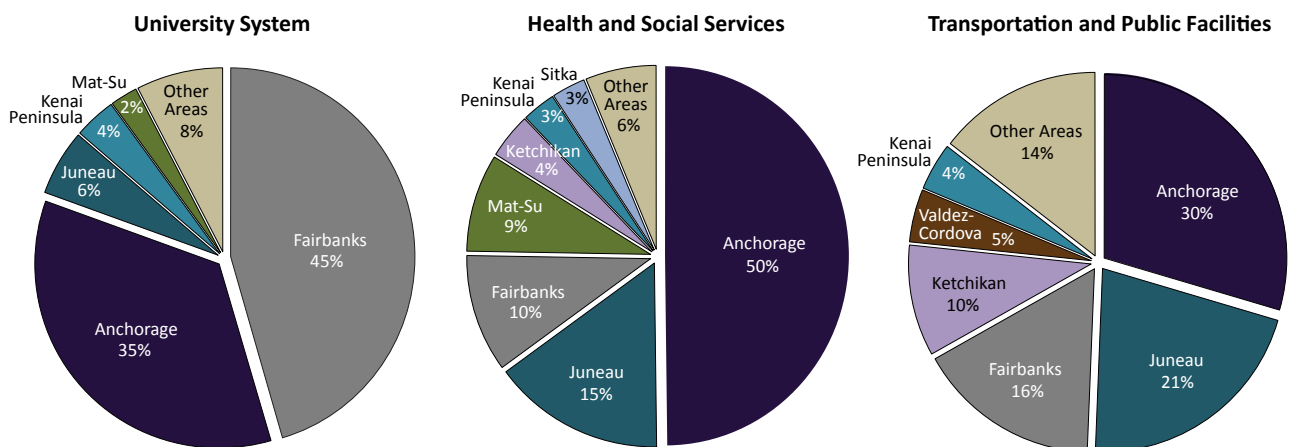


Source: Alaska Department of Labor and Workforce Development, Research and Analysis Section

# 3

## Where the Three Largest Departments' Jobs Are Located

STATE GOVERNMENT, 2015



Source: Alaska Department of Labor and Workforce Development, Research and Analysis Section

Although Anchorage has the biggest *number* of state government jobs, they make up just 6.8 percent of the city's employment and 6.6 percent of its wages. (See Exhibit 5.)

State government is a much larger presence in some areas' economies even if their job numbers are smaller. Concentration varies from 22.9 percent of Juneau's jobs and 27.0 percent of its wages to just 0.4 percent and 0.3 percent respectively for the North Slope Borough. Fairbanks has the second-highest percentages at 13.6 percent of jobs and 14.1 percent of wages. At the low end, state government makes up less than 2 percent of employment in eight boroughs and census areas, including North Slope.

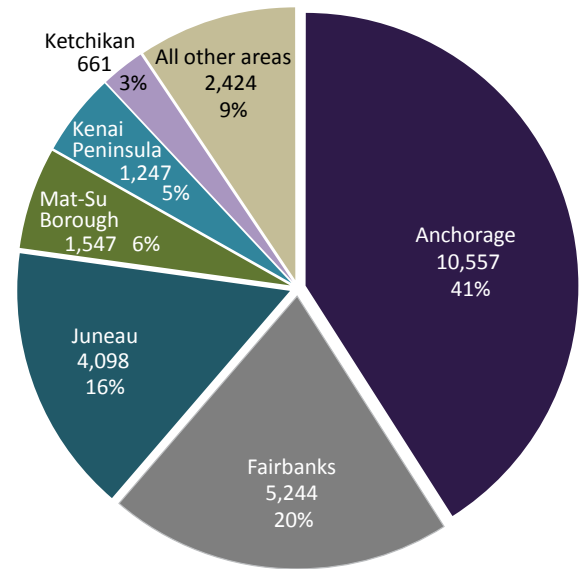
## Some departments are seasonal

Although averaging monthly employment over the course of a year makes it easier to compare employment levels across departments, it's important to note that for some departments, job levels change significantly throughout the year. Figure 6 shows the change in employment levels in 2015 for departments with the most seasonal fluctuation.

For Fish and Game, Natural Resources, and the state-owned Alaska Railroad Corporation, employment rises in the summer when tourism and fishing increase. Those months are also the best time for work on transportation infrastructure. Summer is the low point for the Department of Education and Uni-

## 4 Anchorage Has the Most Jobs

### STATE GOVERNMENT BY AREA, 2015



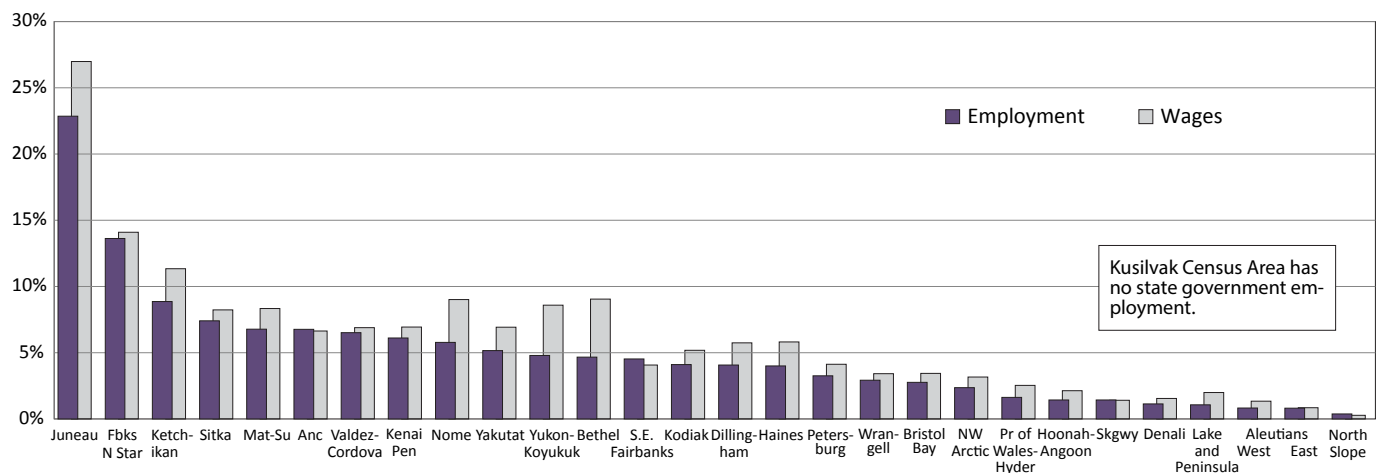
Source: Alaska Department of Labor and Workforce Development, Research and Analysis Section

versity of Alaska, however, because of the academic year.

Tiffany Wadel is an economist in Juneau. Reach her at (907) 465-6027 or [tiffany.wadel@alaska.gov](mailto:tiffany.wadel@alaska.gov).

## 5 State Government a Big Slice for Some Areas, Absent Elsewhere

### PERCENTAGE OF AN AREA'S TOTAL JOBS AND WAGES, 2015

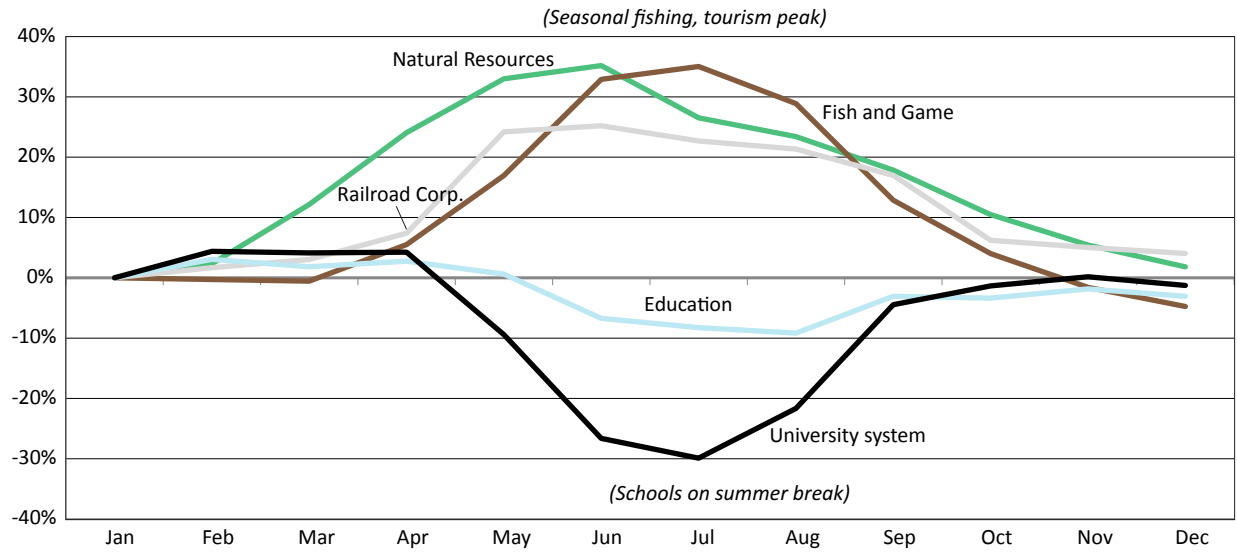


Source: Alaska Department of Labor and Workforce Development, Research and Analysis Section

# 6

## Certain State Departments are Seasonal

### MONTHLY EMPLOYMENT CHANGE BY SELECT DEPARTMENT, 2015



Source: Alaska Department of Labor and Workforce Development, Research and Analysis Section