

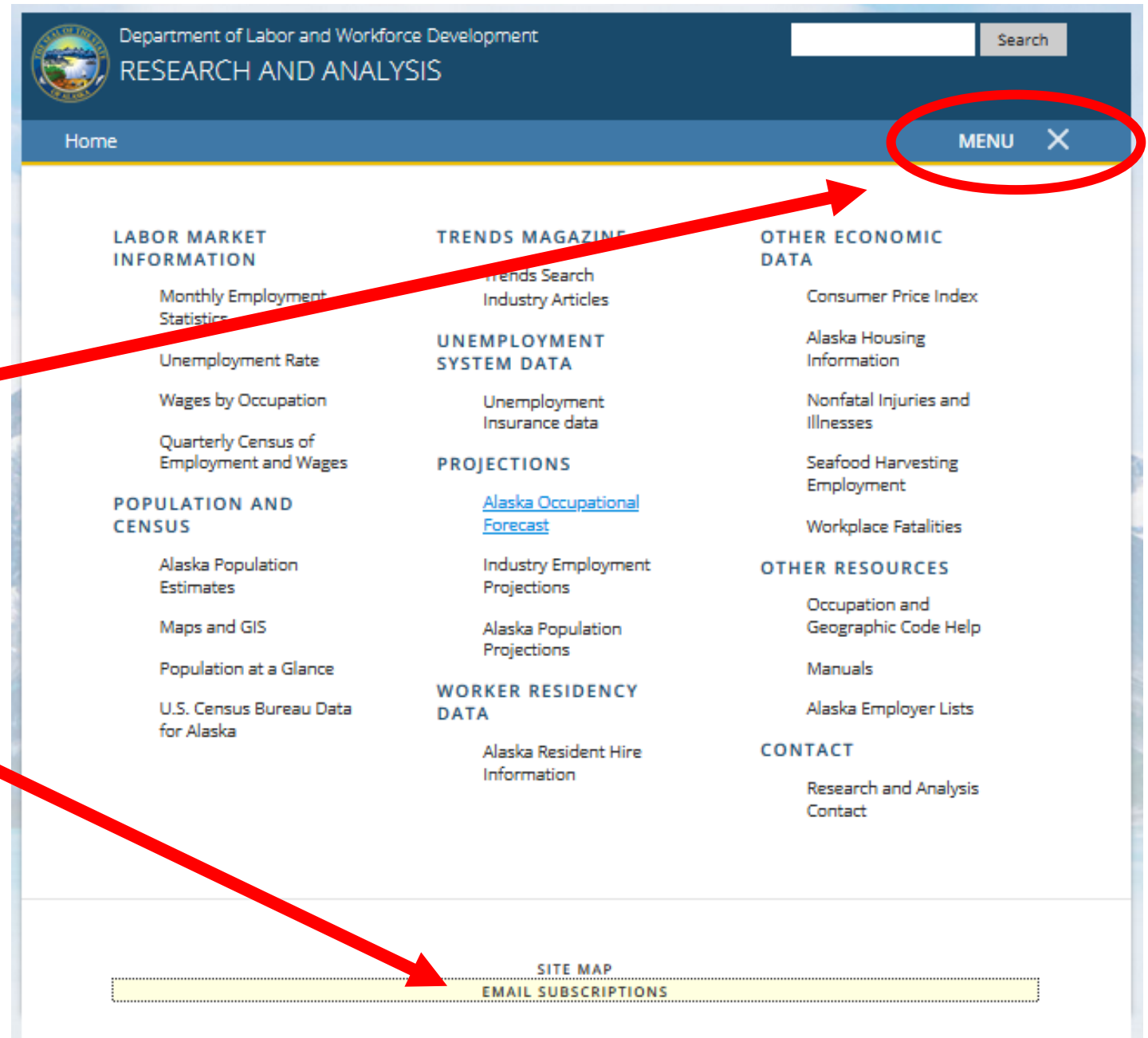
Sign up to our listserv

Go to

laborstats.alaska.gov

Open MENU then

EMAIL SUBSCRIPTIONS
at bottom

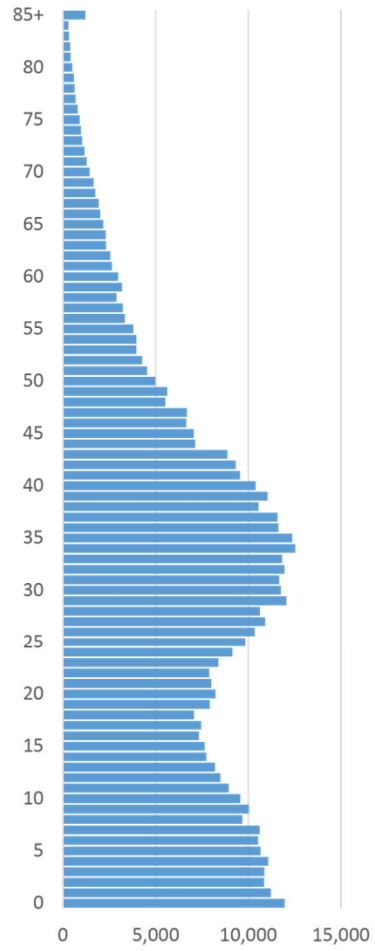


The Aging of Alaska

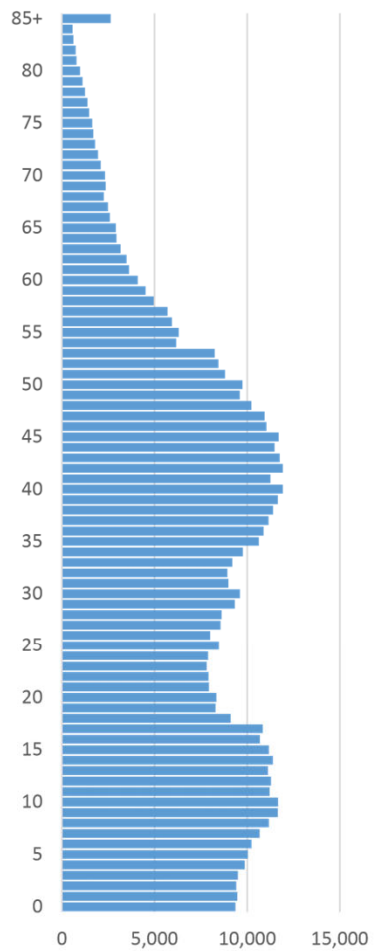
David Howell – State Demographer

Eric Sandberg – Demographer

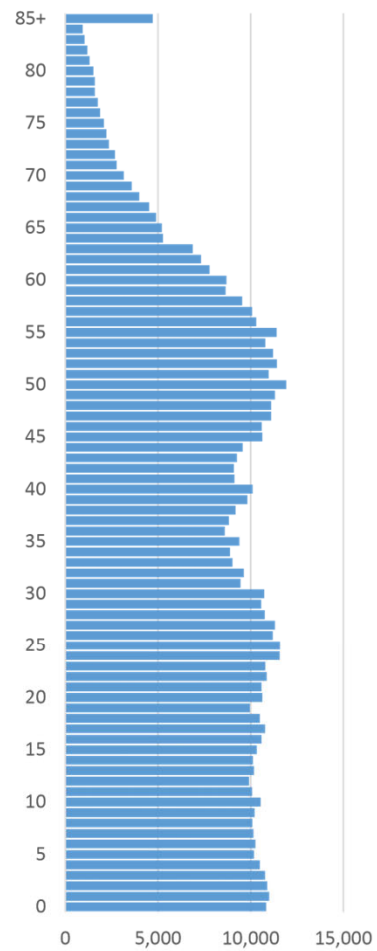
Alaska by Single Year of Age



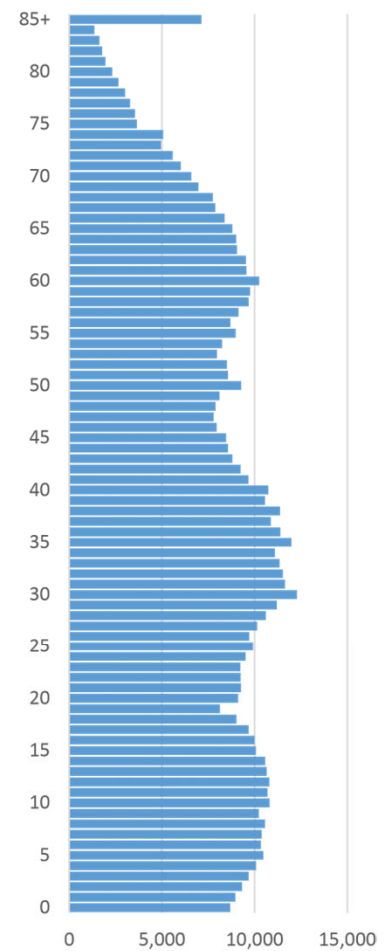
1990



2000

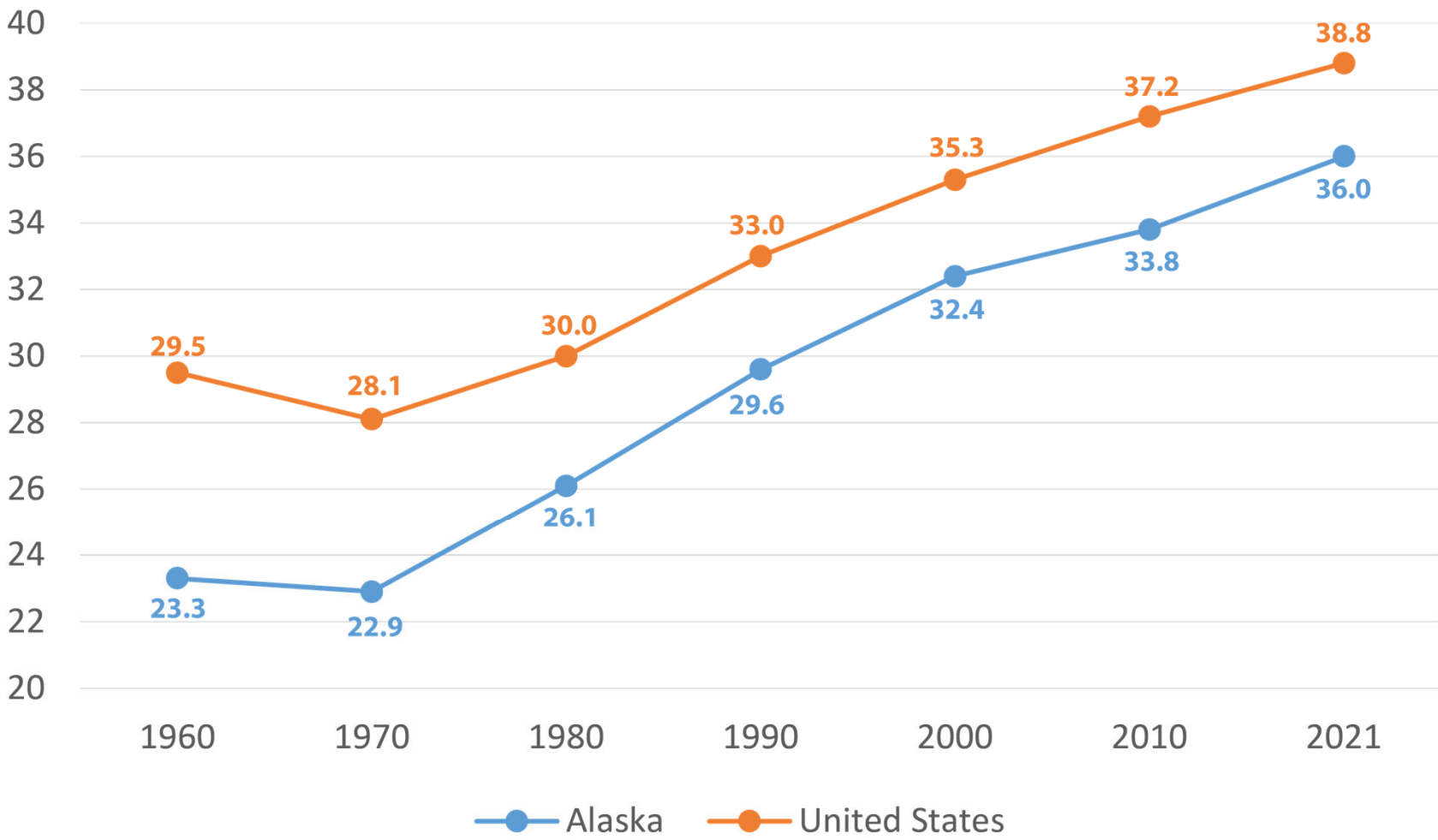


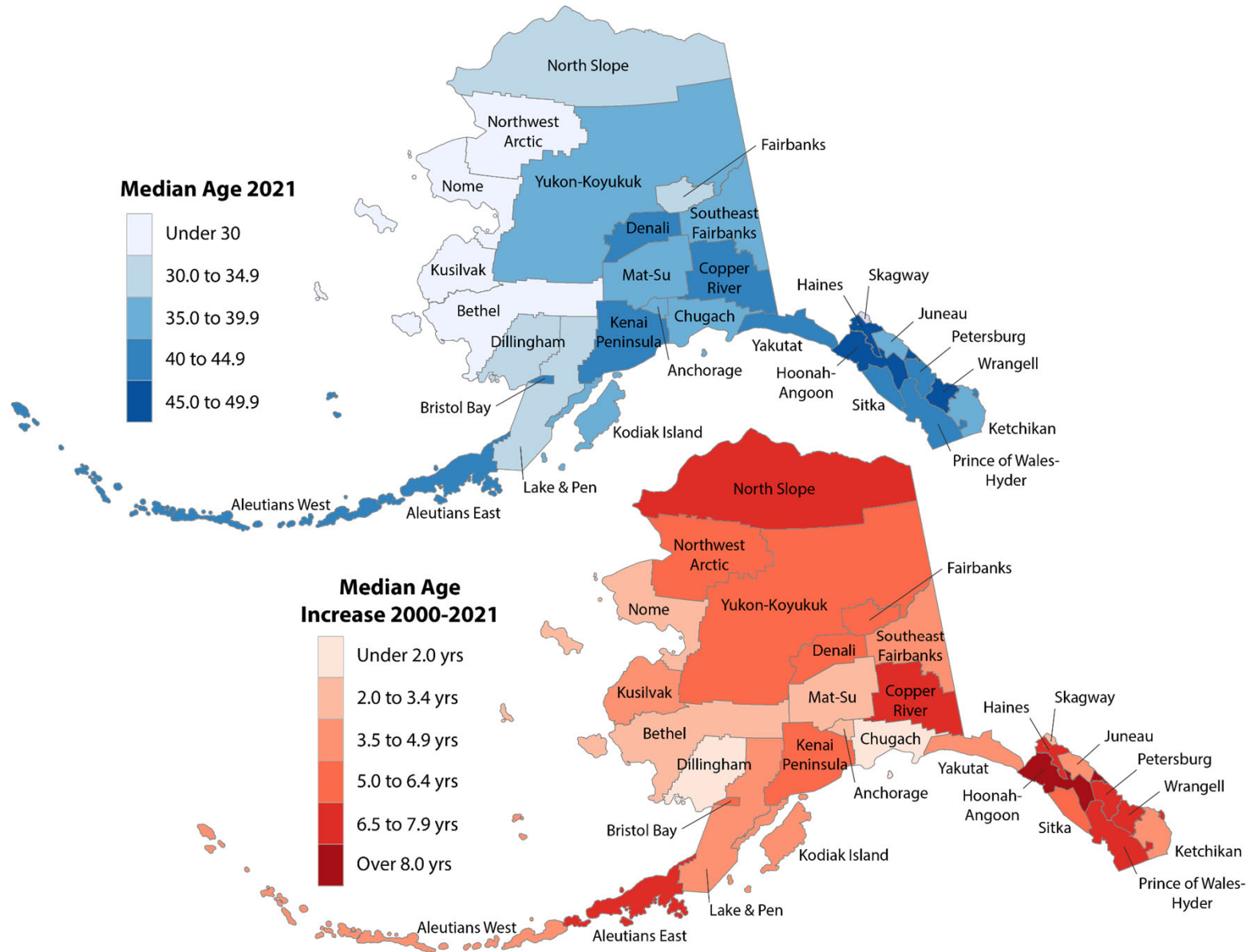
2010



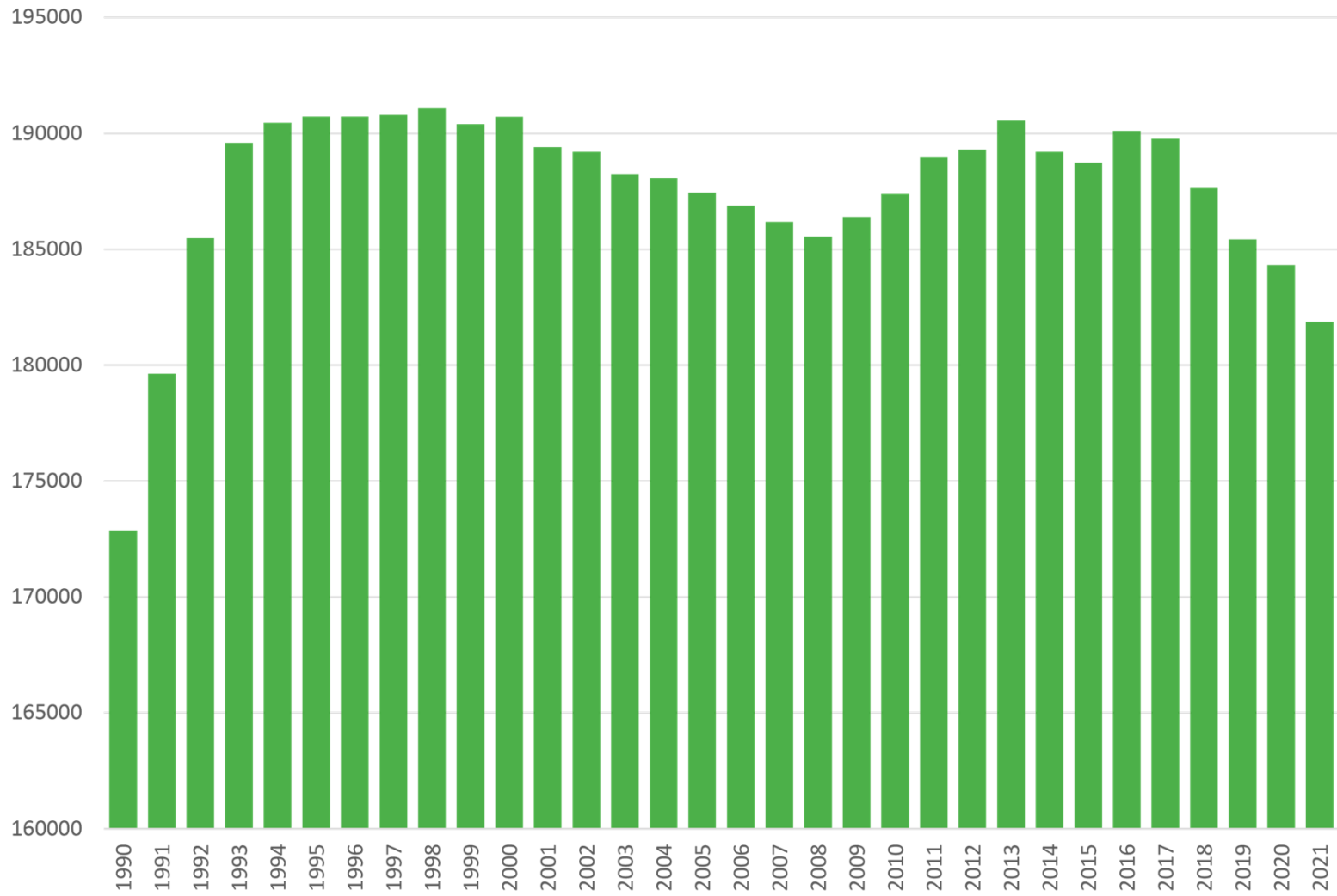
2021

Median Age over Time

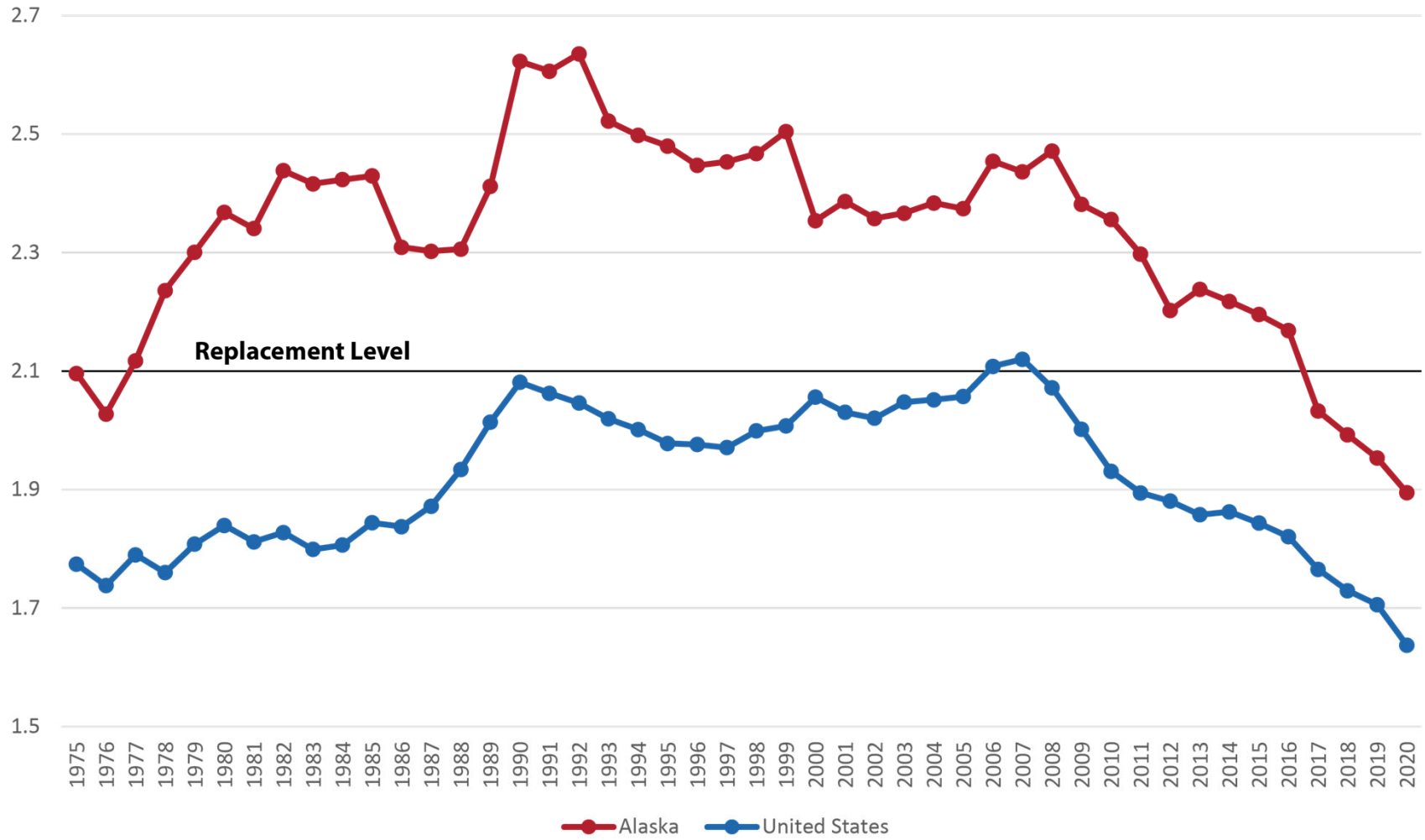




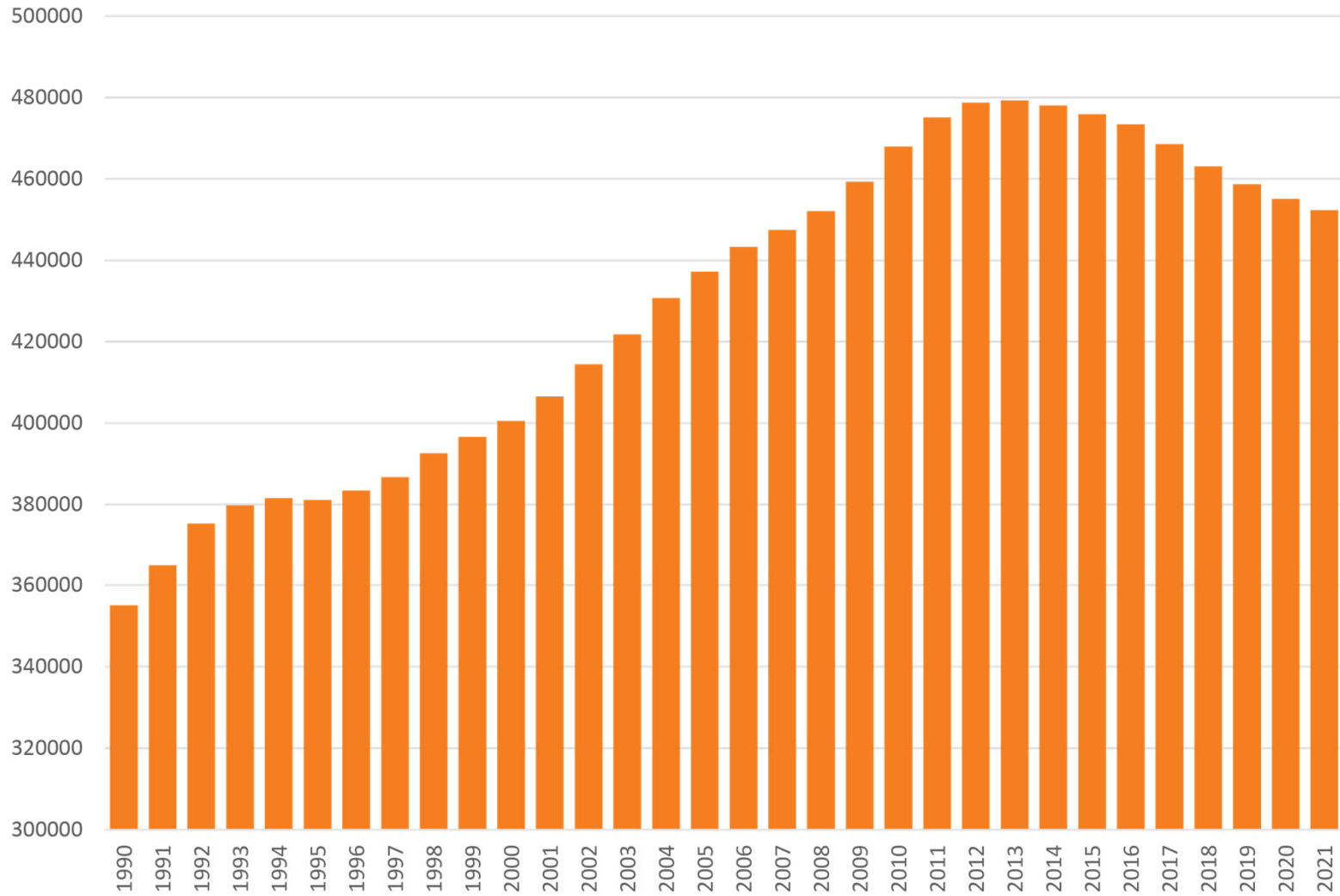
Child (0-17) Population 1990-2021



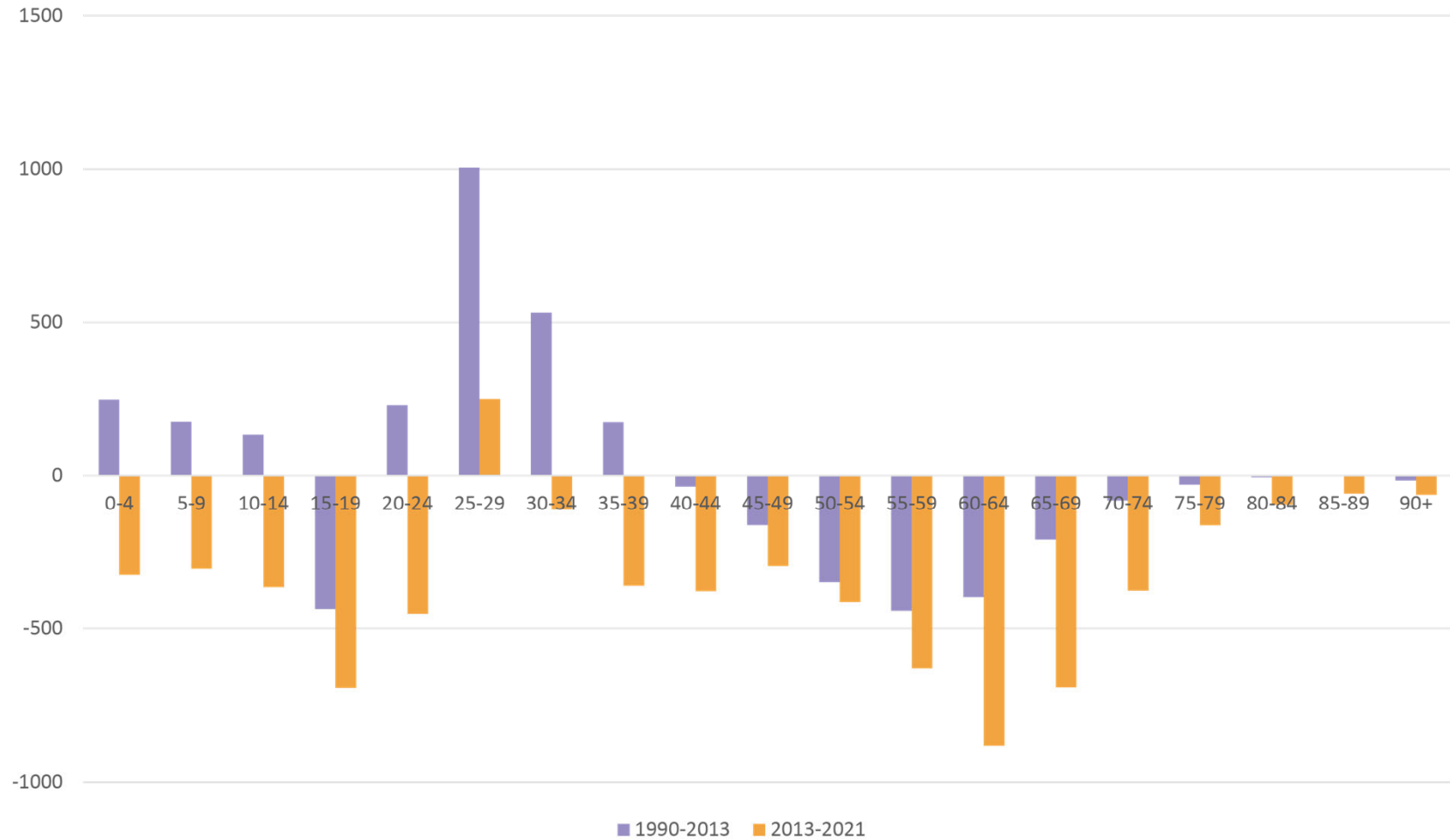
Total Fertility Rate 1975-2020



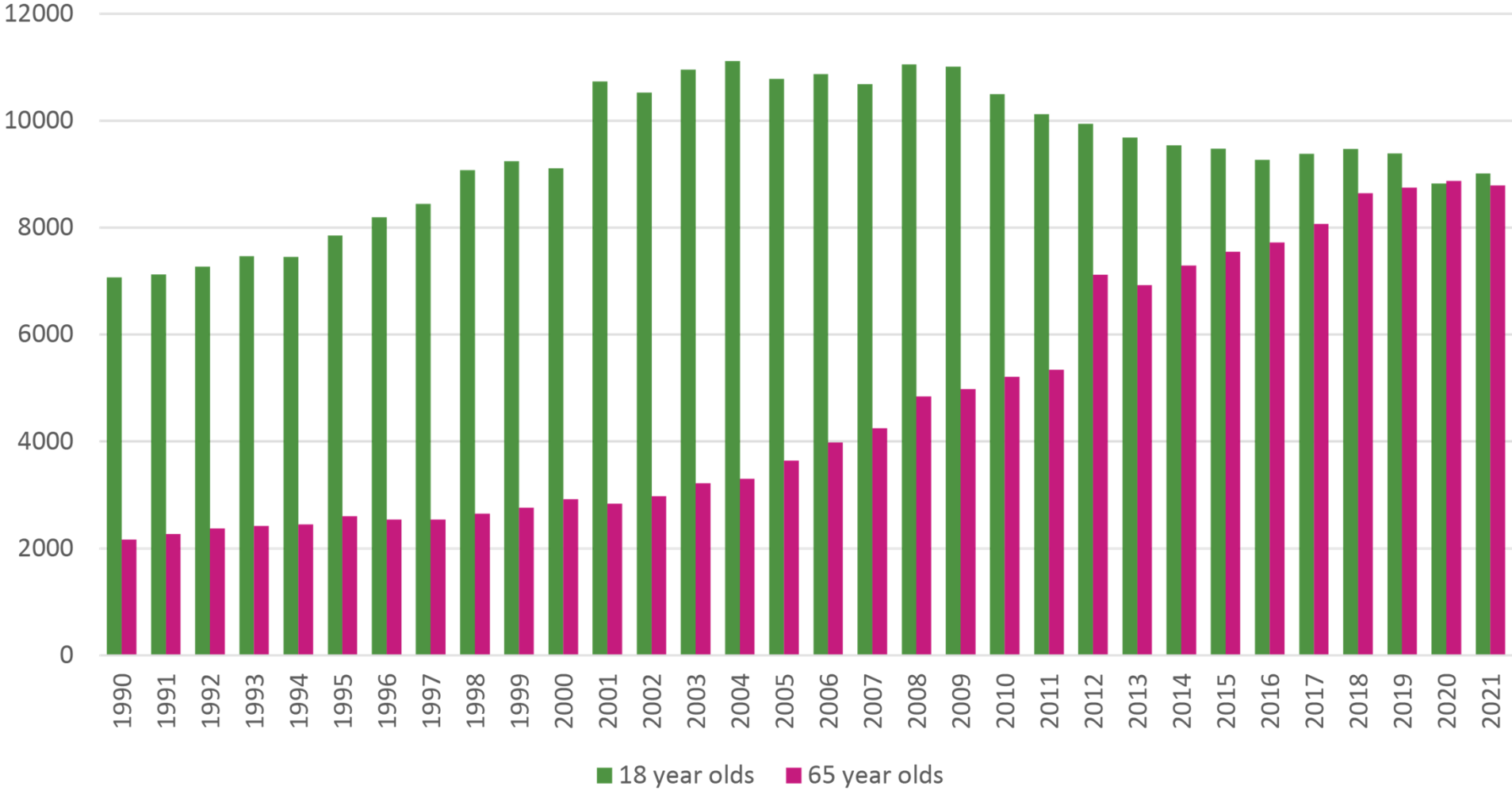
Working Age (18-64) Population 1990-2021



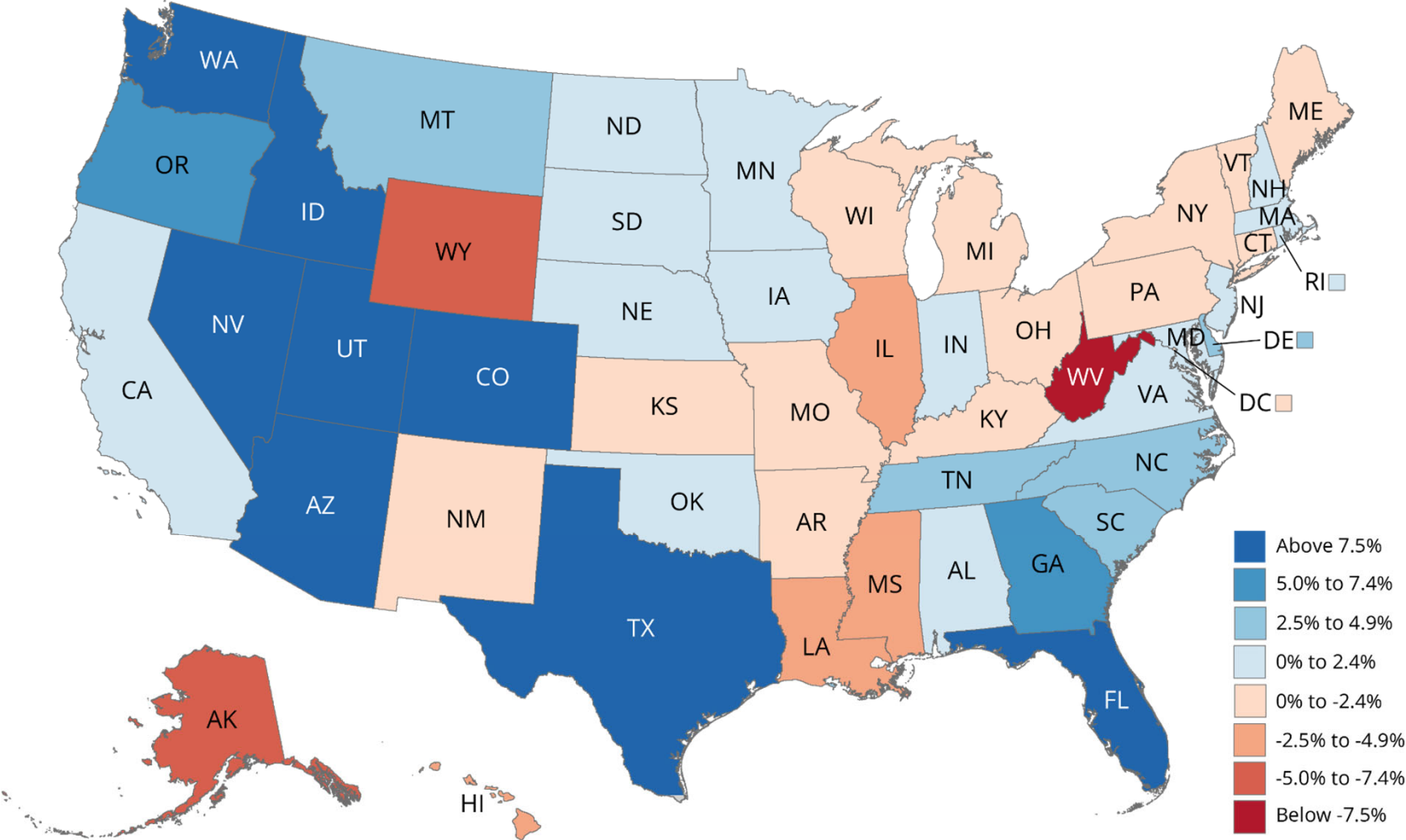
Average Annual Net Migration by Age Comparison 1990-2013 vs. 2013-2021



Turned 18 yrs old vs. Turned 65 yrs old 1990-2021



Percentage Change in Working Age (18-64) population 2013-2021

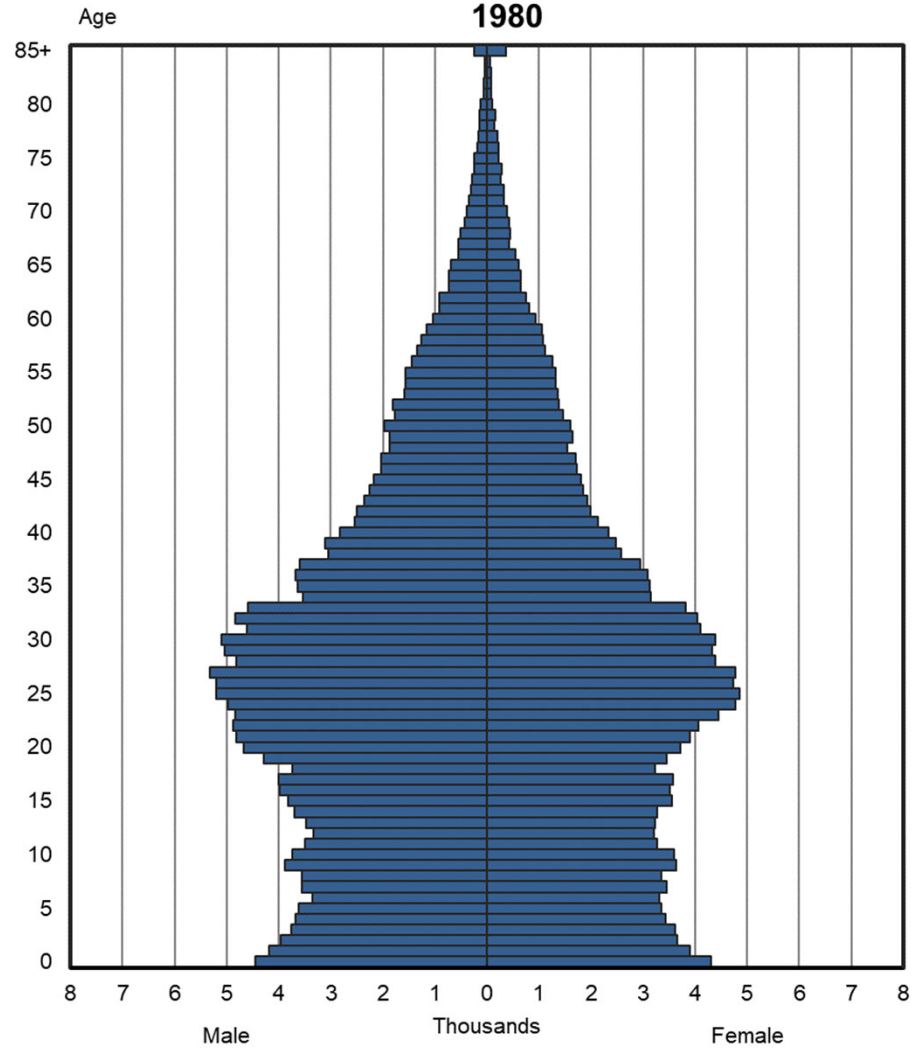


Alaska's Senior Population

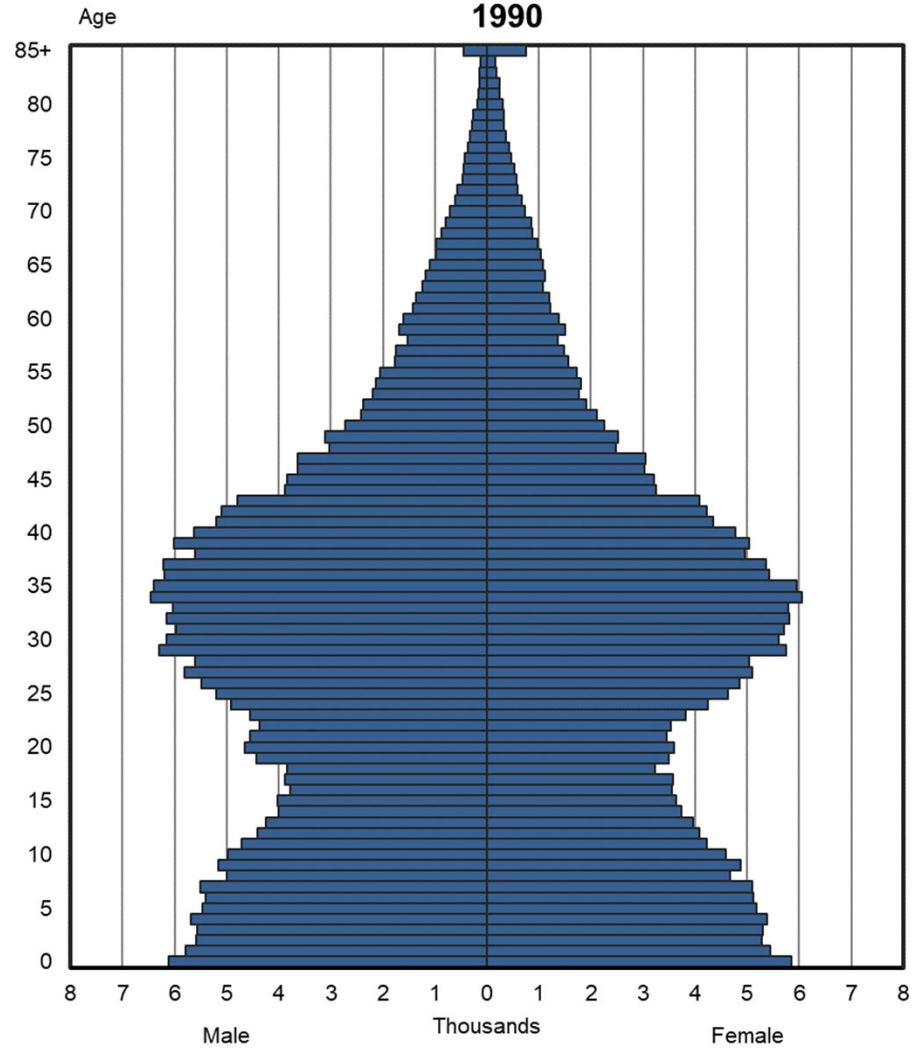
David Howell

Alaska Department of Labor
and Workforce Development

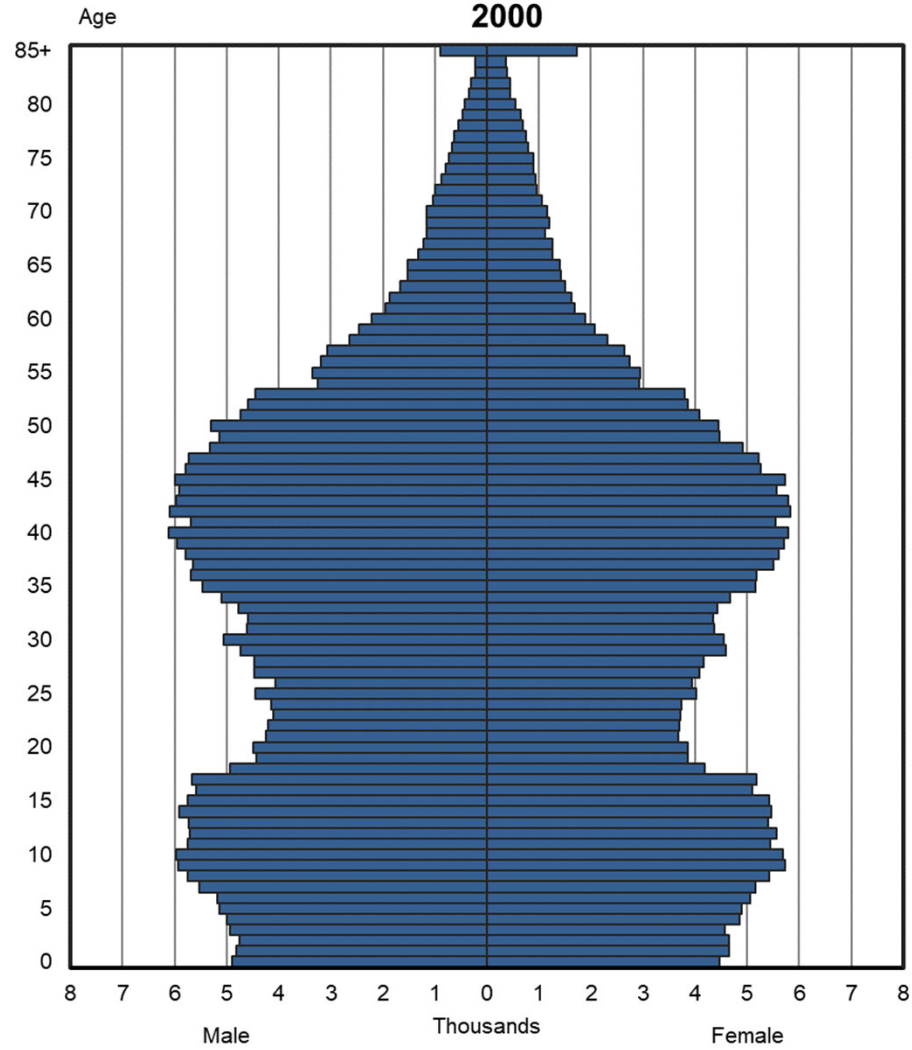
Estimated Alaska Population by Age and Sex 1980



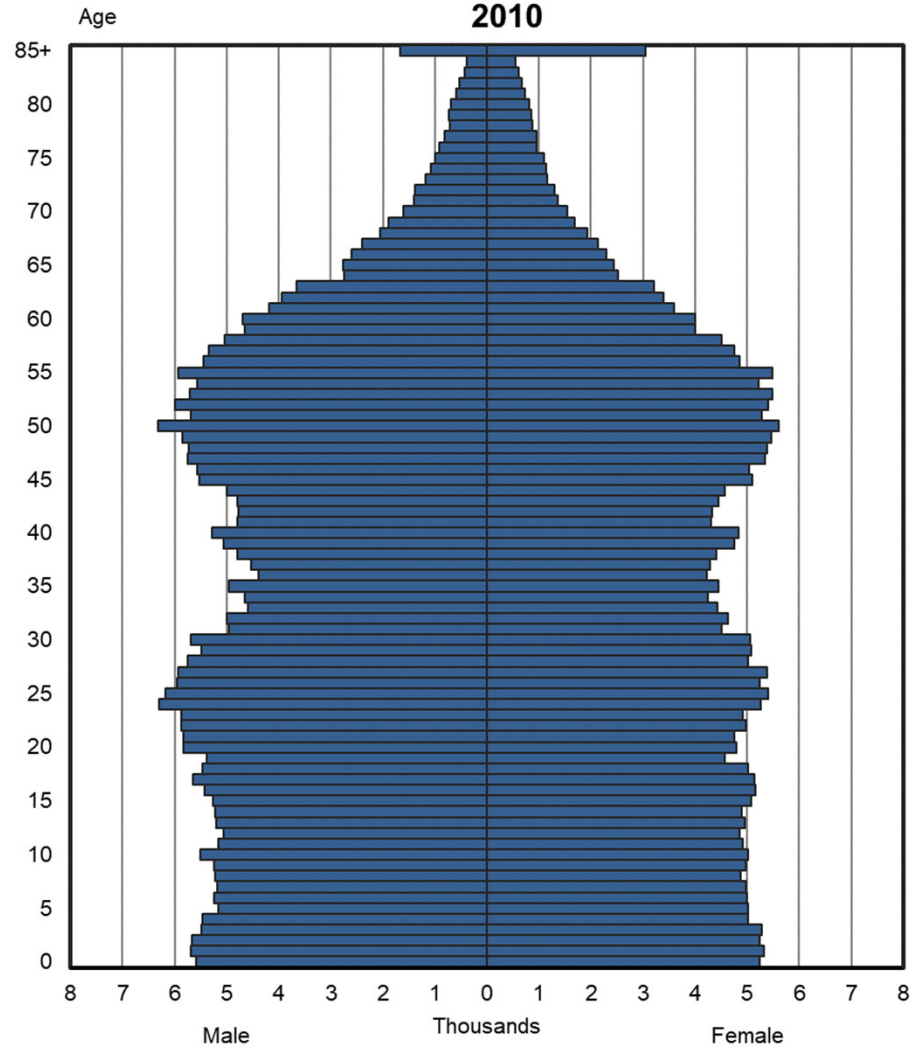
Estimated Alaska Population by Age and Sex 1990



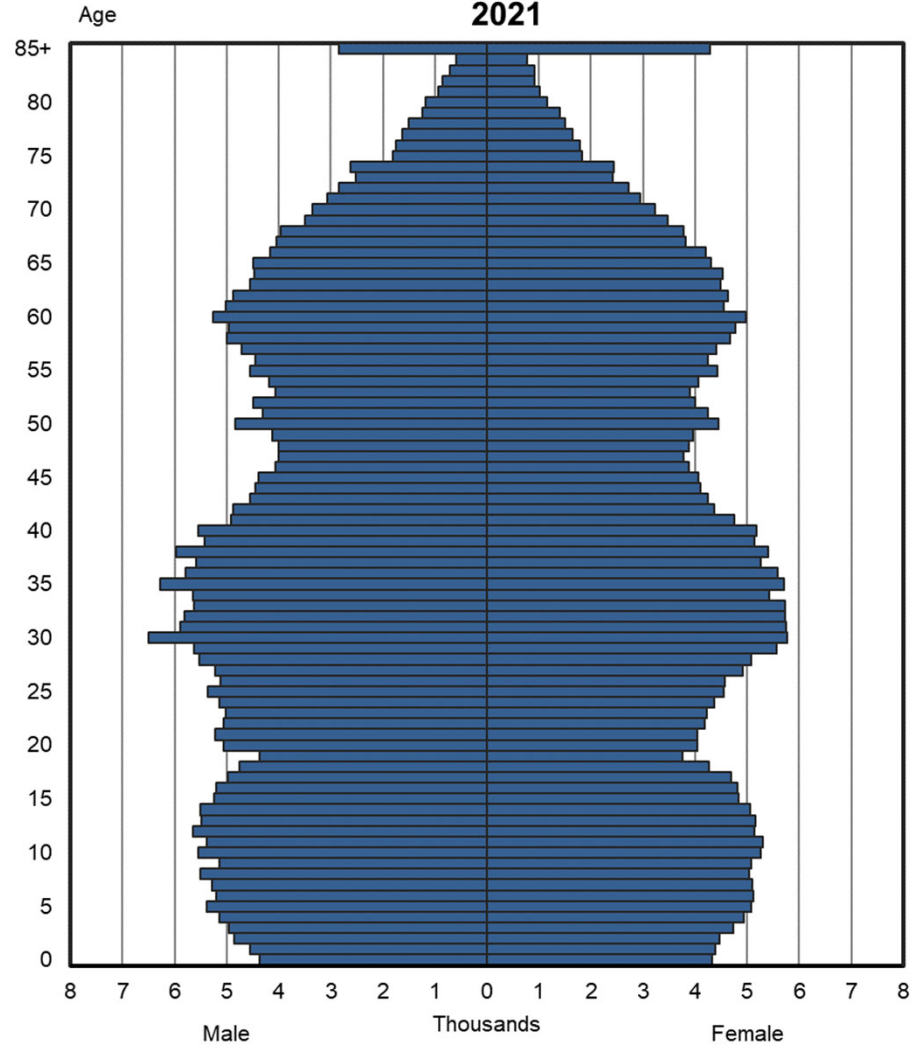
Estimated Alaska Population by Age and Sex 2000



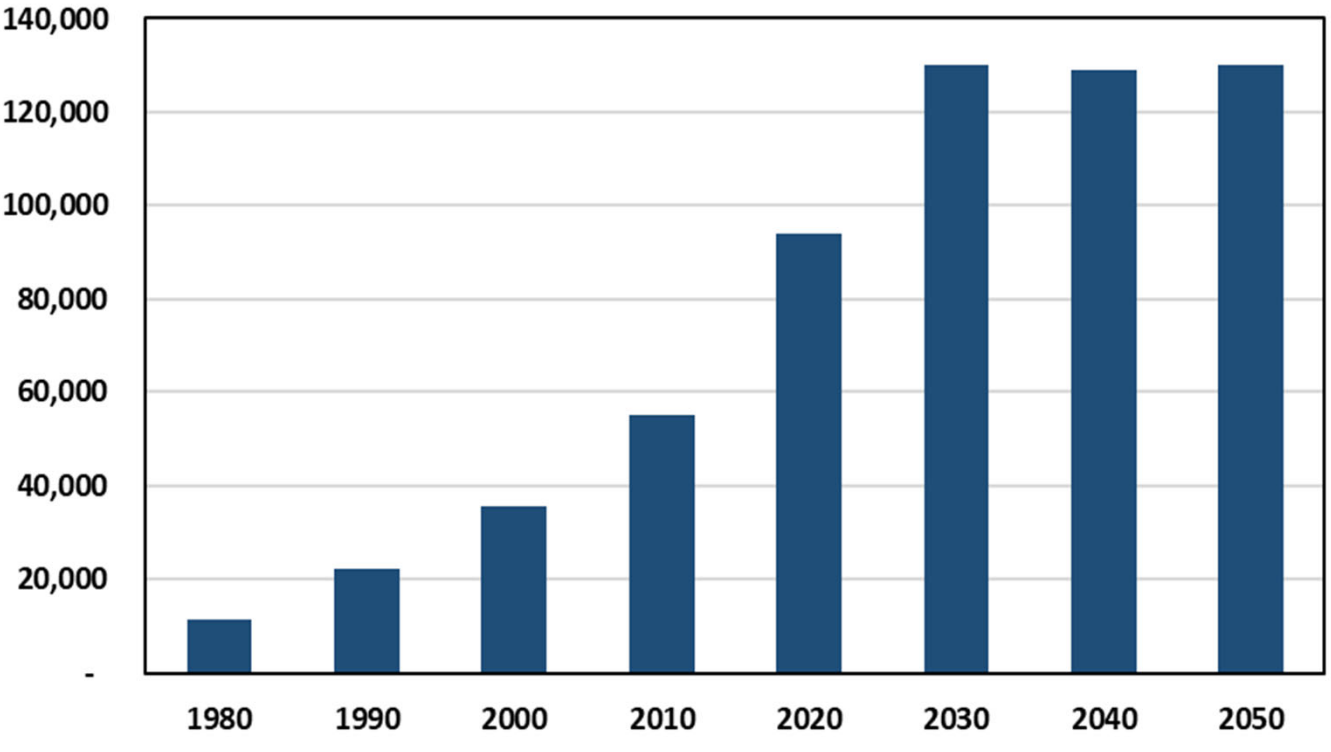
Estimated Alaska Population by Age and Sex 2010



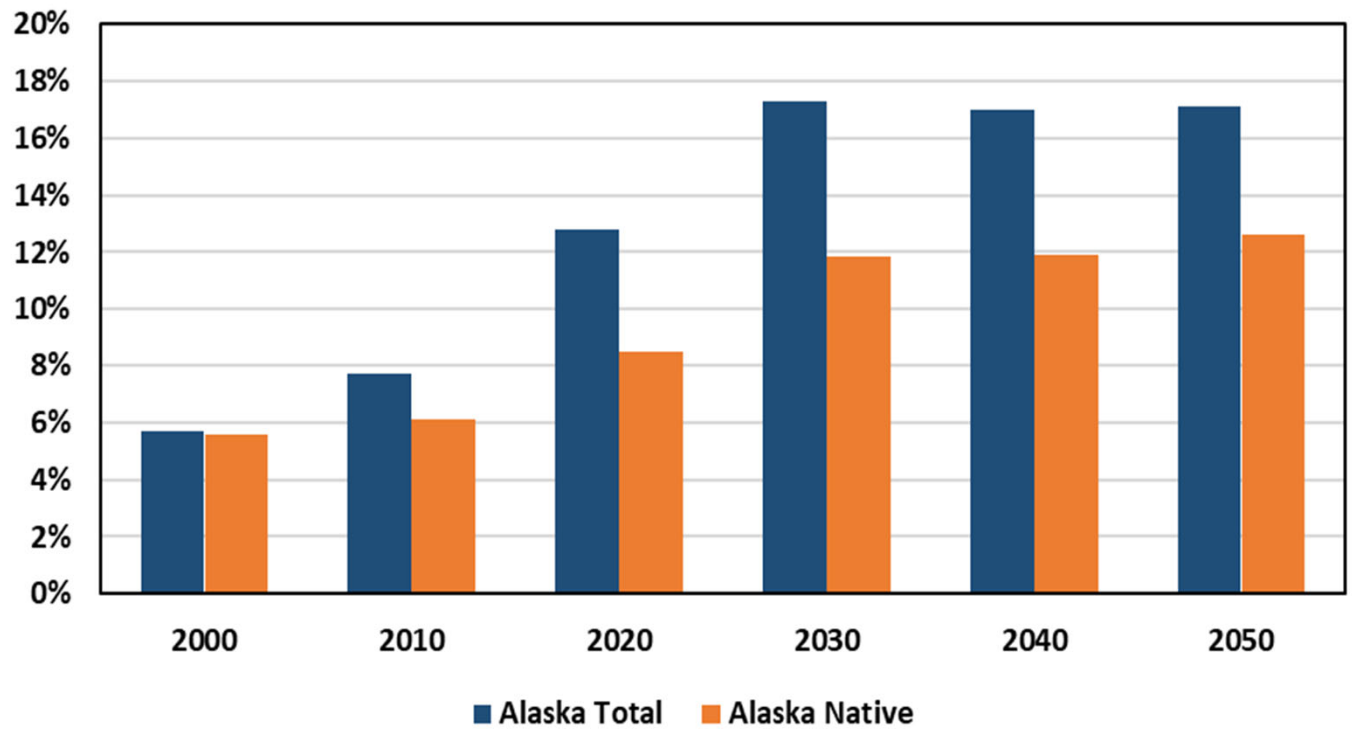
Estimated Alaska Population by Age and Sex 2021



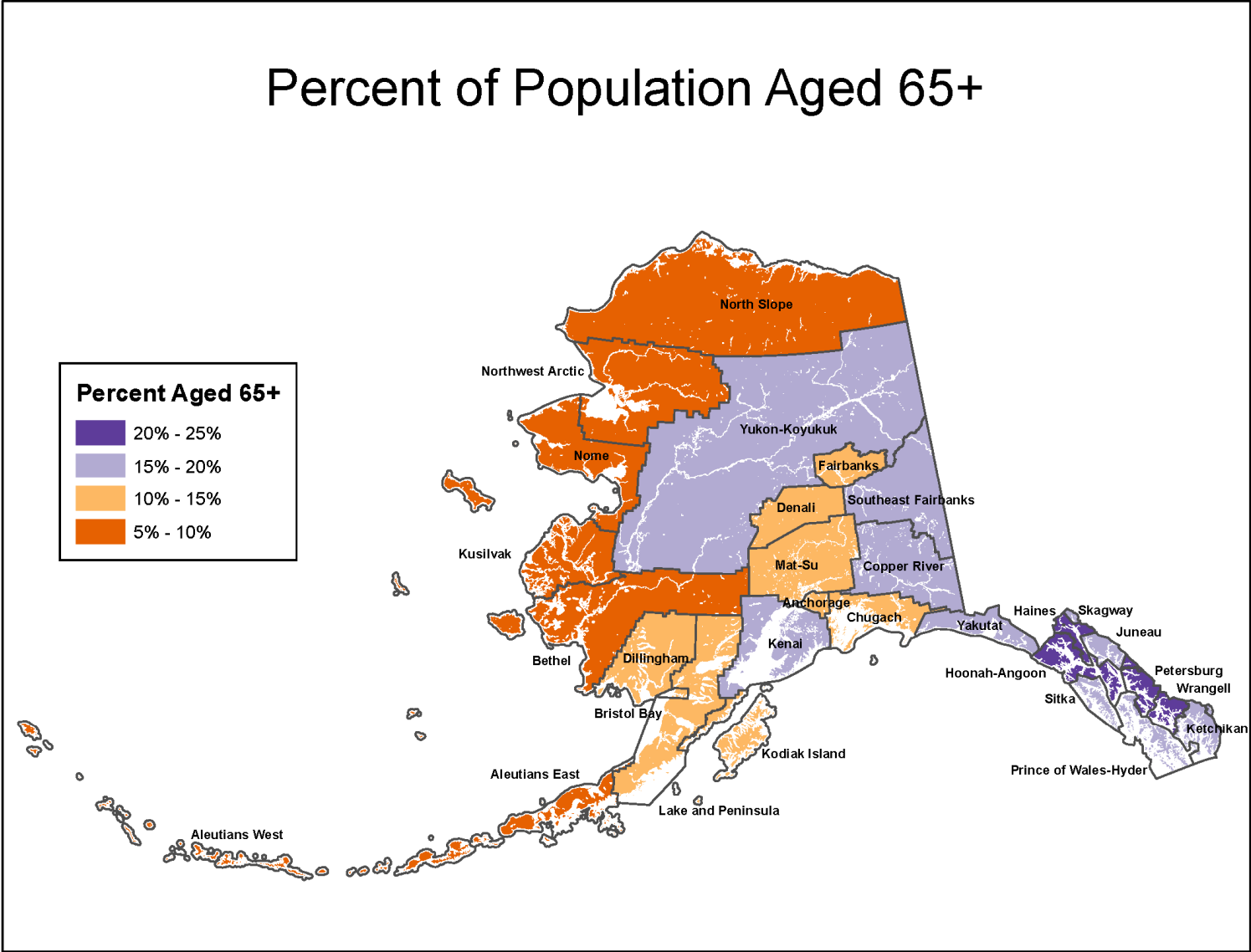
Alaska Population Aged 65+



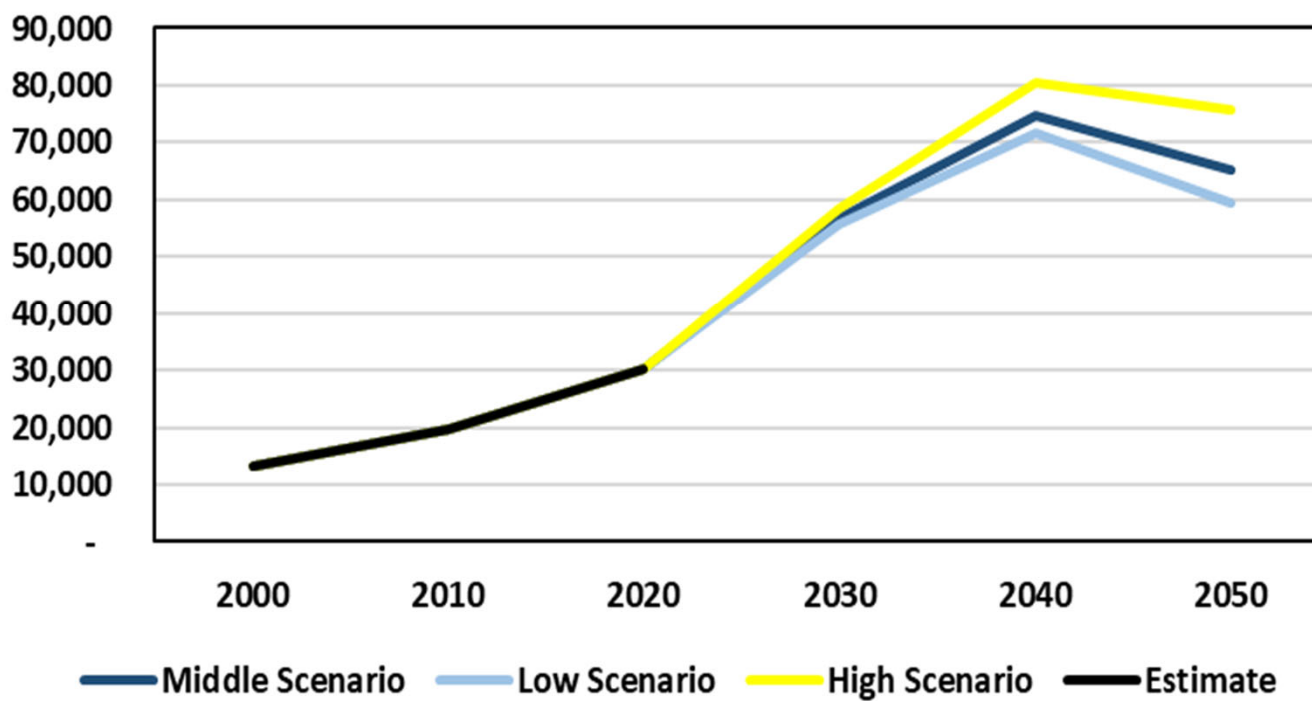
Percent of Population aged 65+



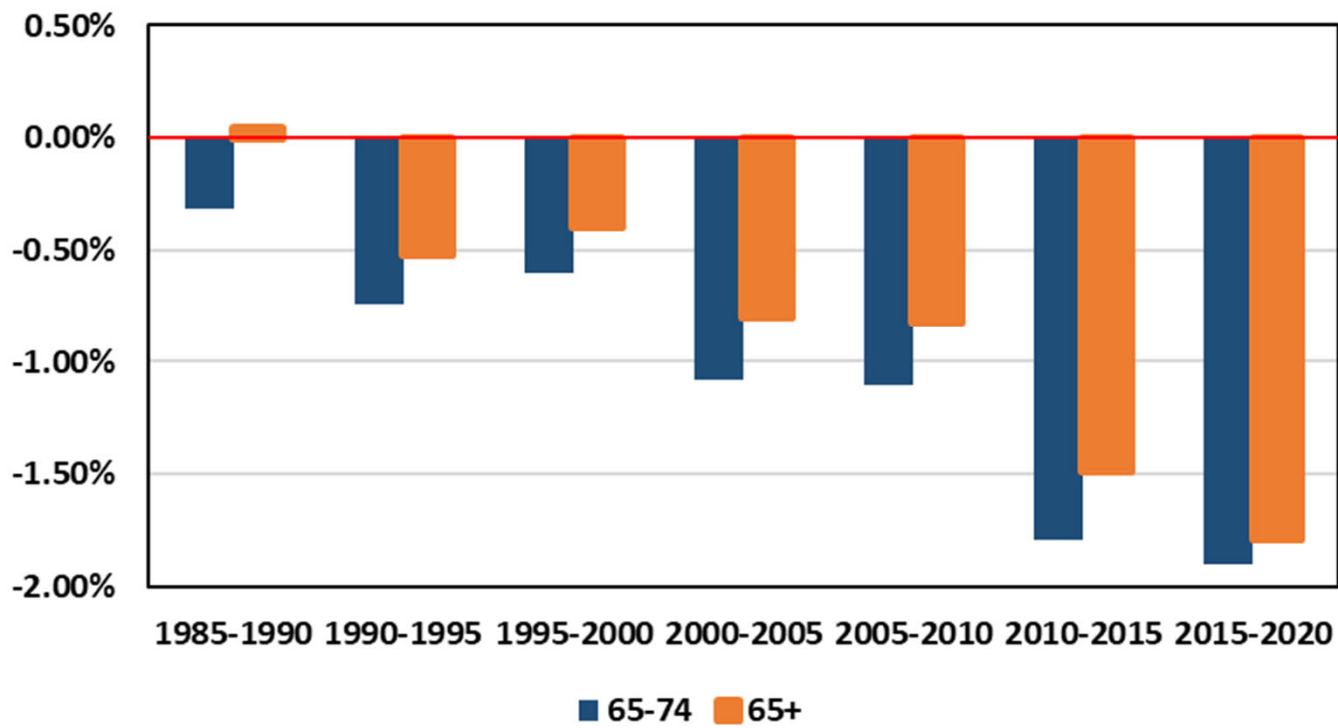
Percent of Population Aged 65+

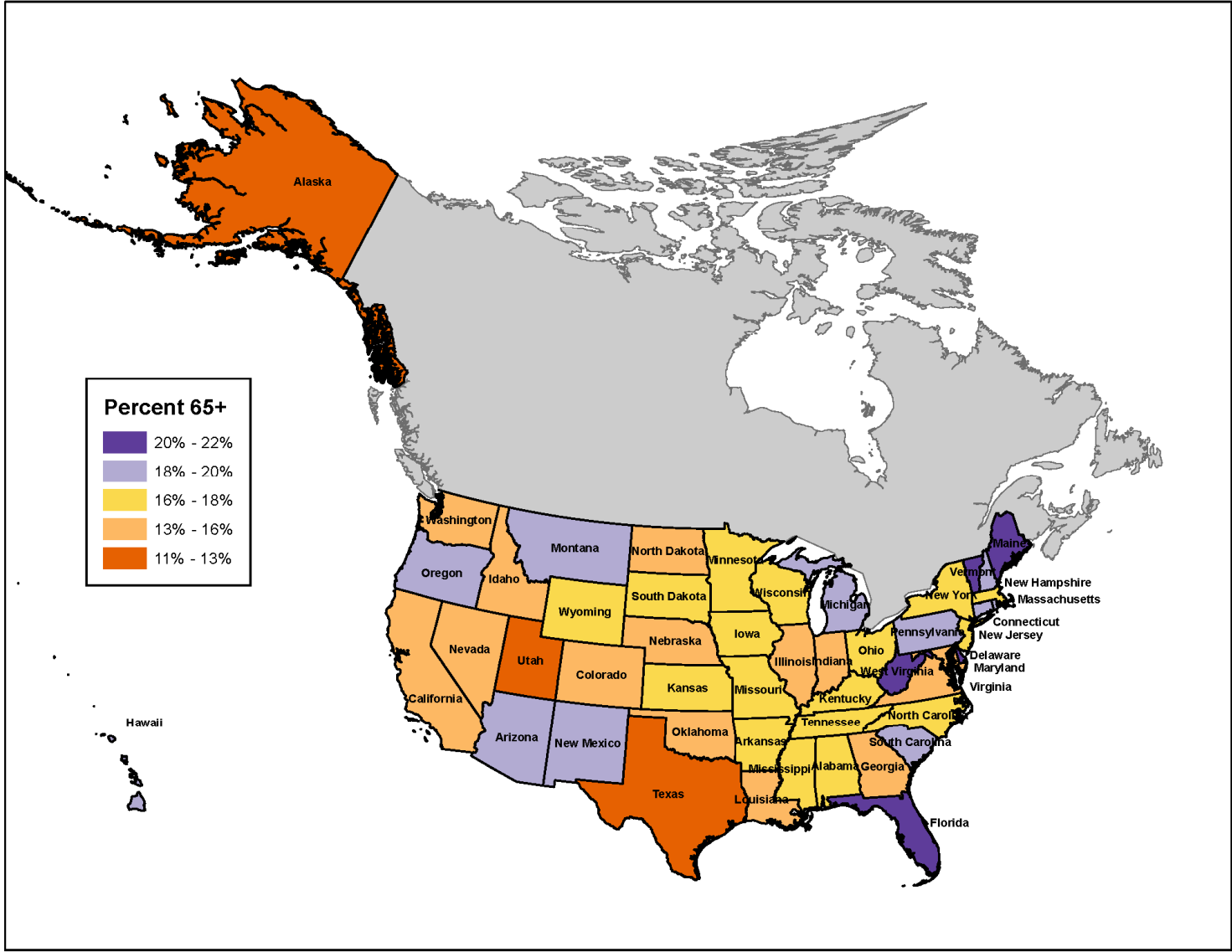


Population 75+, 2000 - 2050

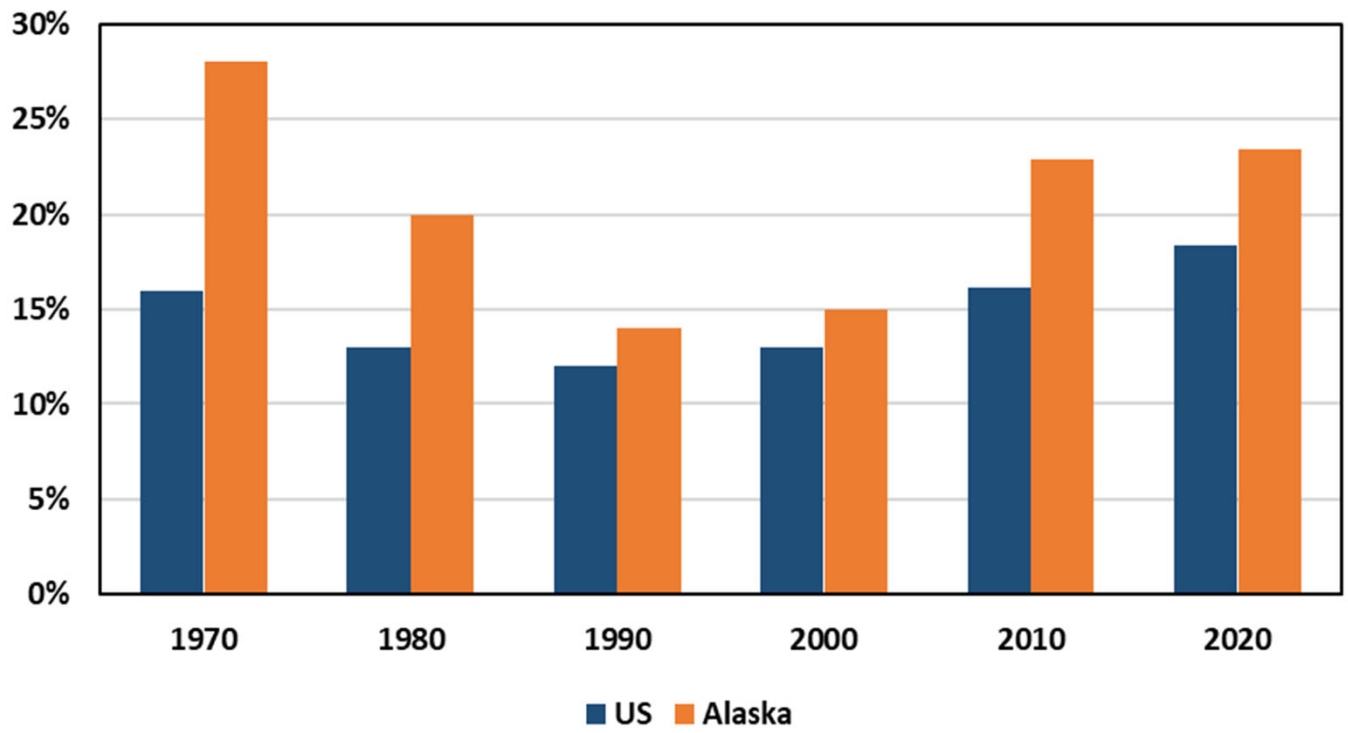


Net Migration Rate

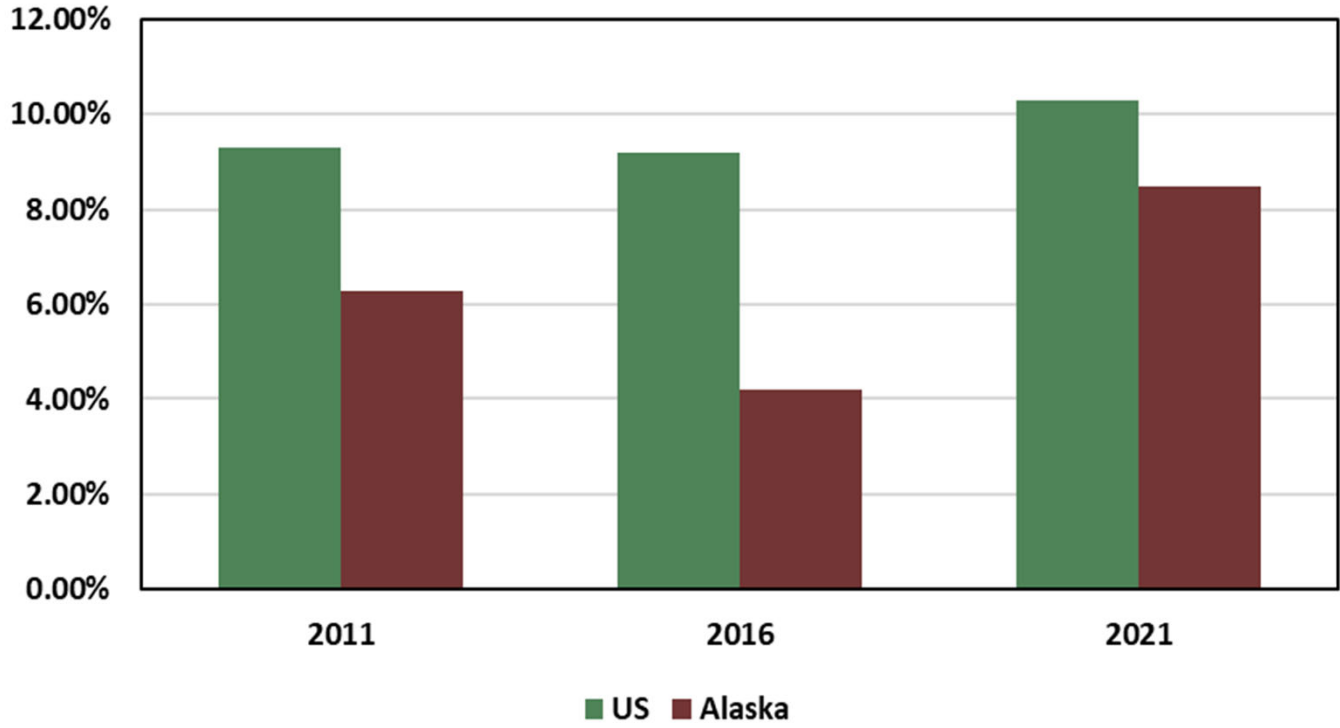




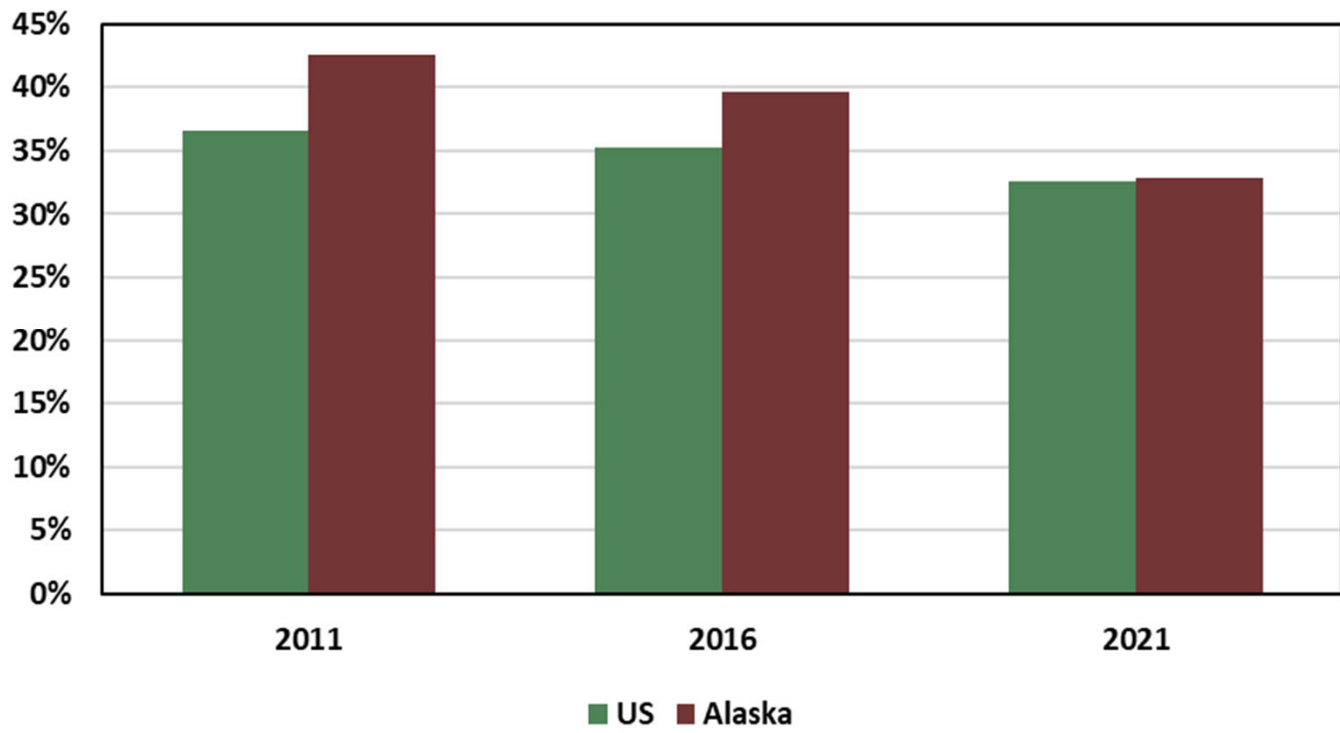
Labor Force Participation for the 65+ Population



Poverty Rate for the 65+ Population



Percent Disabled for the 65+ Population



Thank you!

Contact:

david.howell@alaska.gov

eric.sandberg@alaska.gov

More information:

<http://laborstats.alaska.gov/>