

# Today

9:15 to 10:15 a.m.

## What do 2020 Census data show?

10:30 to 11:30 a.m.

## Can I challenge my city's 2020 Census results?

2 to 3 p.m.

## Who lives in Alaska? An overview of our population

# Tomorrow

10 to 11 a.m.

What do data show us about the effects of COVID-19 on the Alaska economy?

2 to 3 p.m.

How many people work here? Understanding Alaska's labor market information

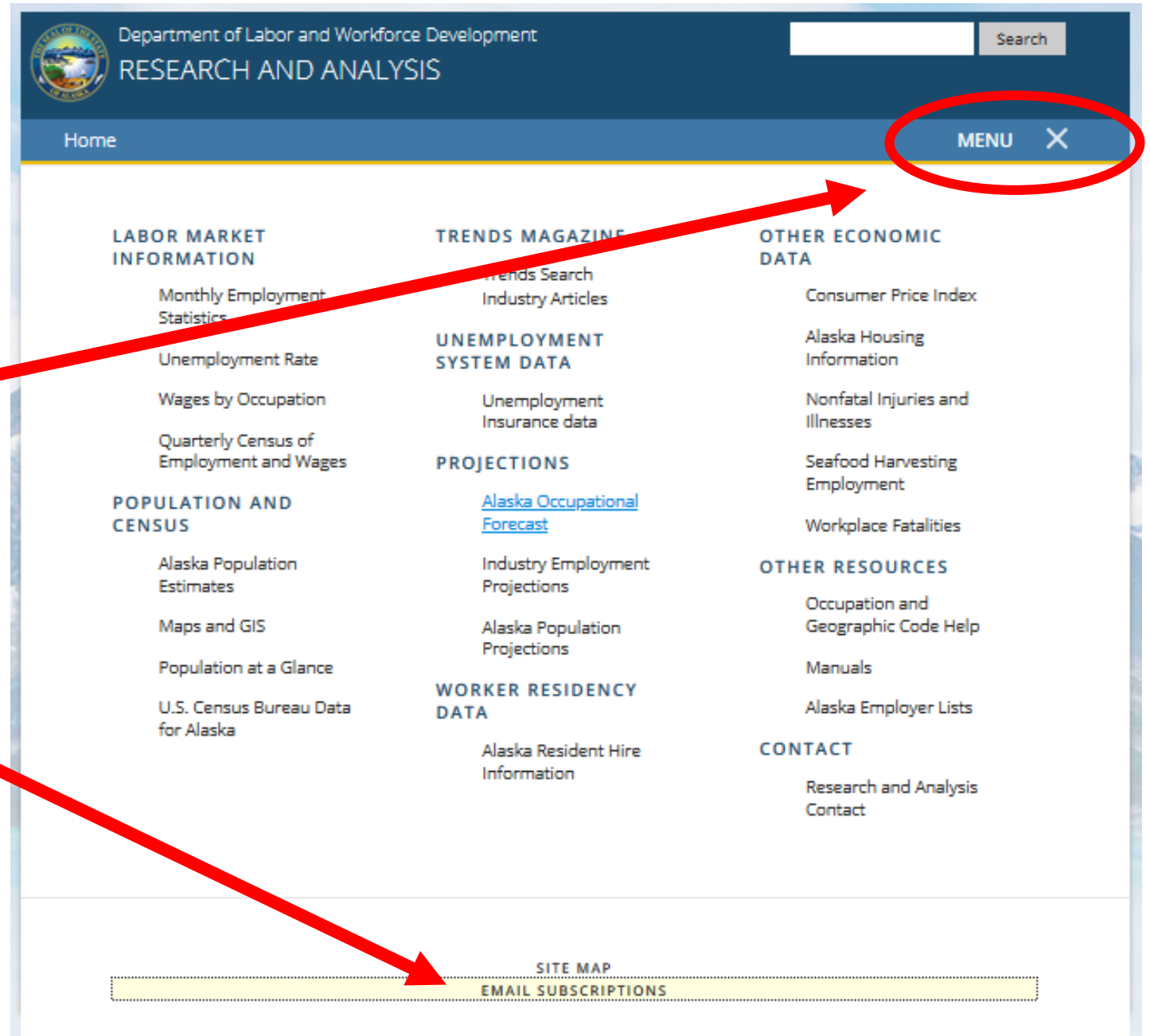
Sign up to our listserv

Go to

[laborstats.alaska.gov](http://laborstats.alaska.gov)

Open MENU then

EMAIL SUBSCRIPTIONS  
at bottom



# Who lives in Alaska? An overview of our population

2 to 3 p.m.

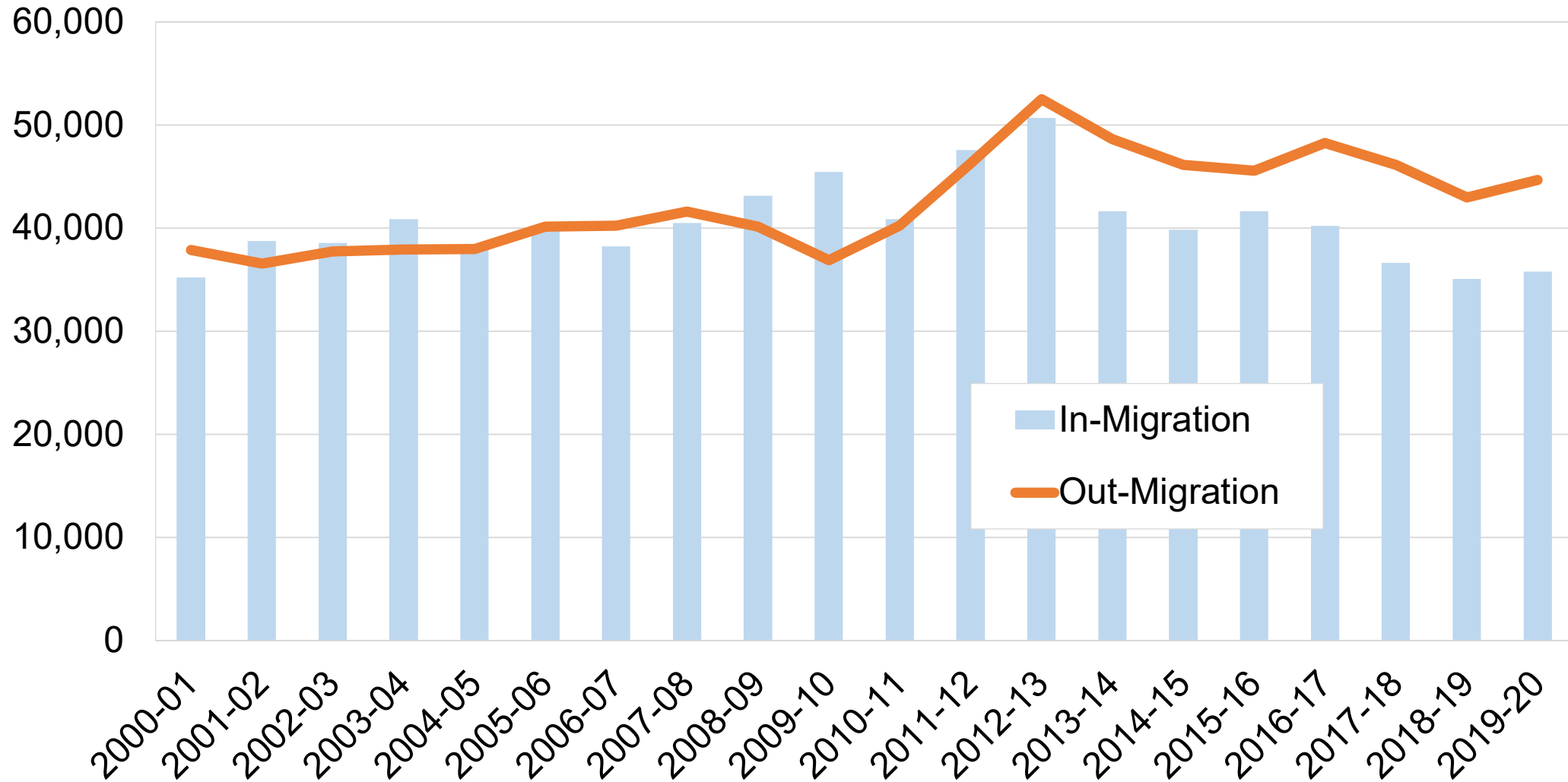
- David Howell, State Demographer, Research and Analysis
- Eric Sandberg, Demographer, Research and Analysis
- Liz Brooks, Research Analyst, Research and Analysis

True or false:

People are moving out of Alaska at record numbers.

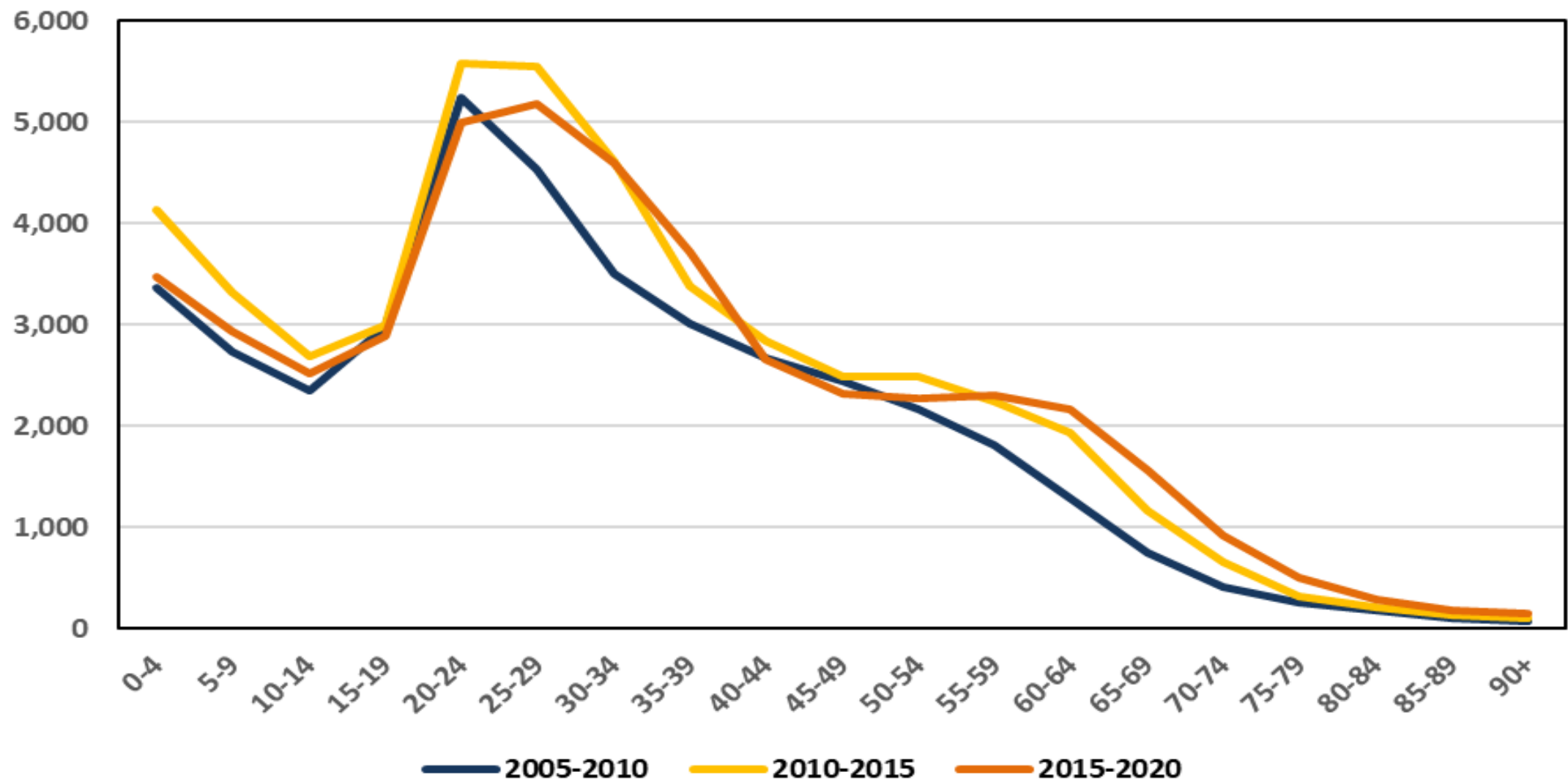
**FALSE**

## Alaska In- and Out-Migration Since 2000



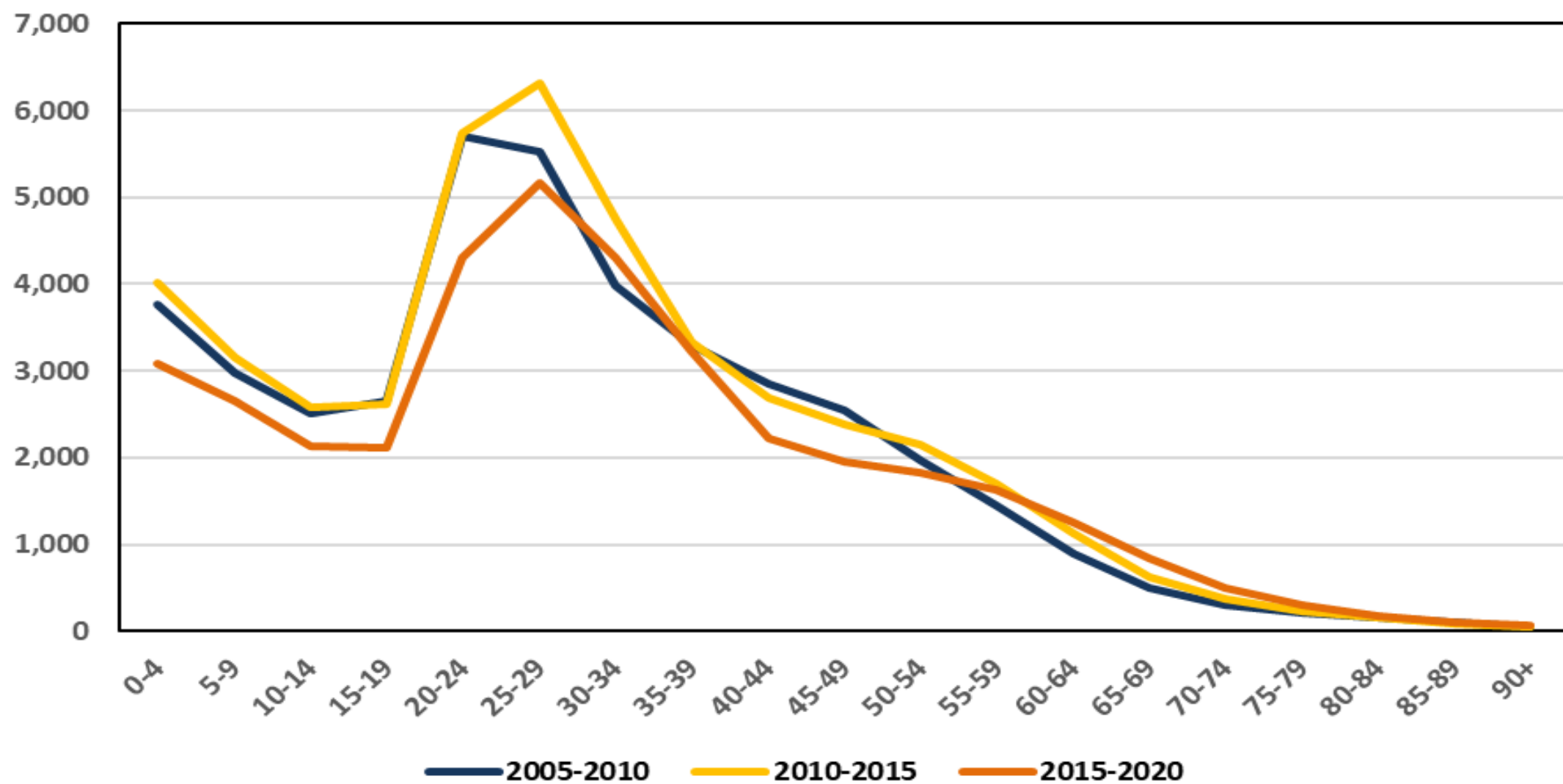
Source: Alaska Department of Labor and Workforce Development, Research and Analysis

**Out Migration 2005-2010, 2010-2015, 2015-2020**





## In Migration 2005-2010, 2010-2015, 2015-2020



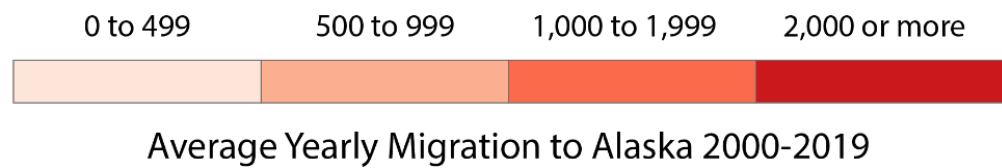
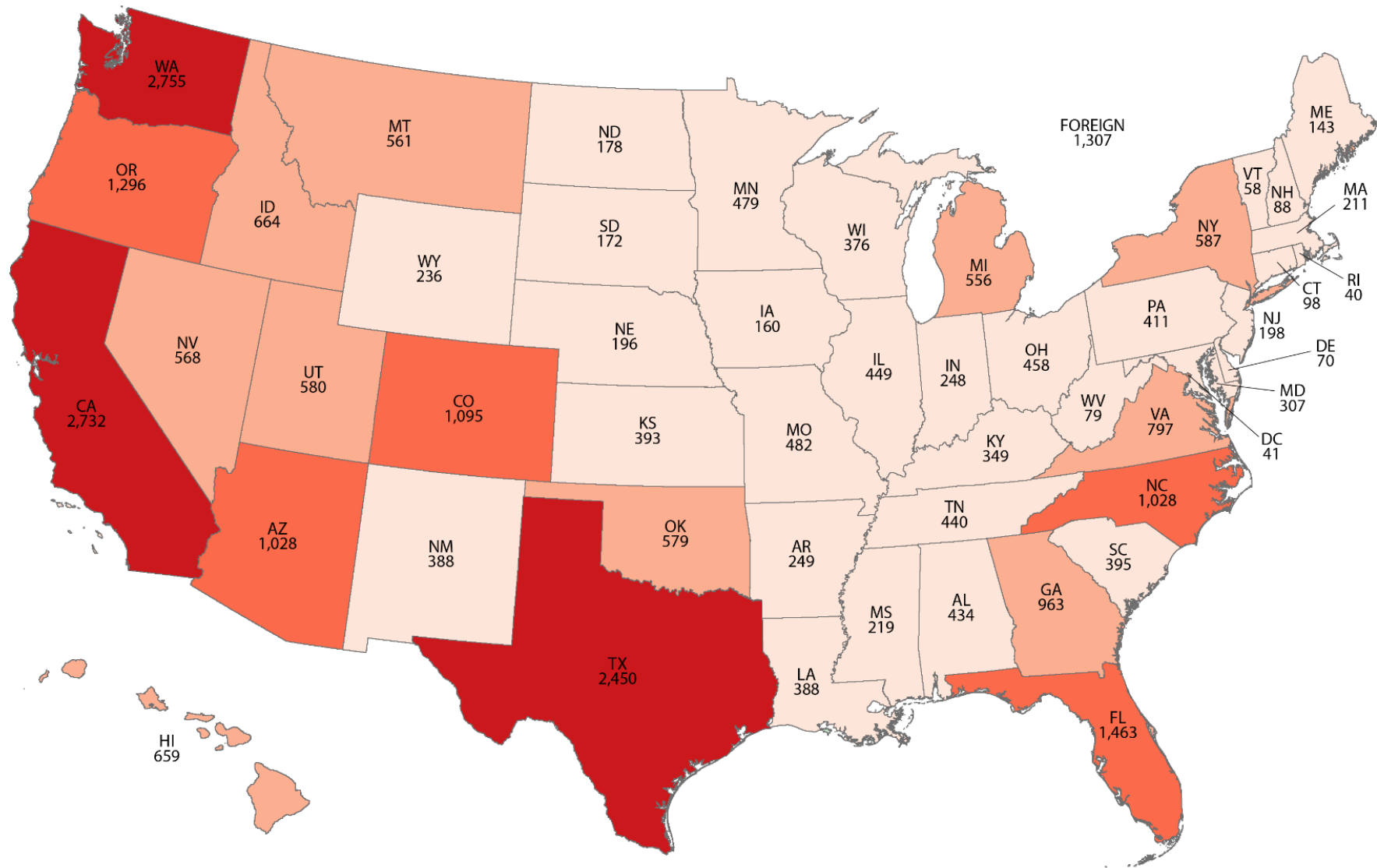
True or false:

Most Alaskans moved here from other states.

**TRUE**

State	Proportion born in state
Alaska	42
...	
Louisiana	78
Michigan	76
Ohio	75
...	
District of Columbia	37
Florida	36
Nevada	27

Source: Table B06003, American Community Survey 5-year  
Estimates, 2015-2019, U.S. Census Bureau

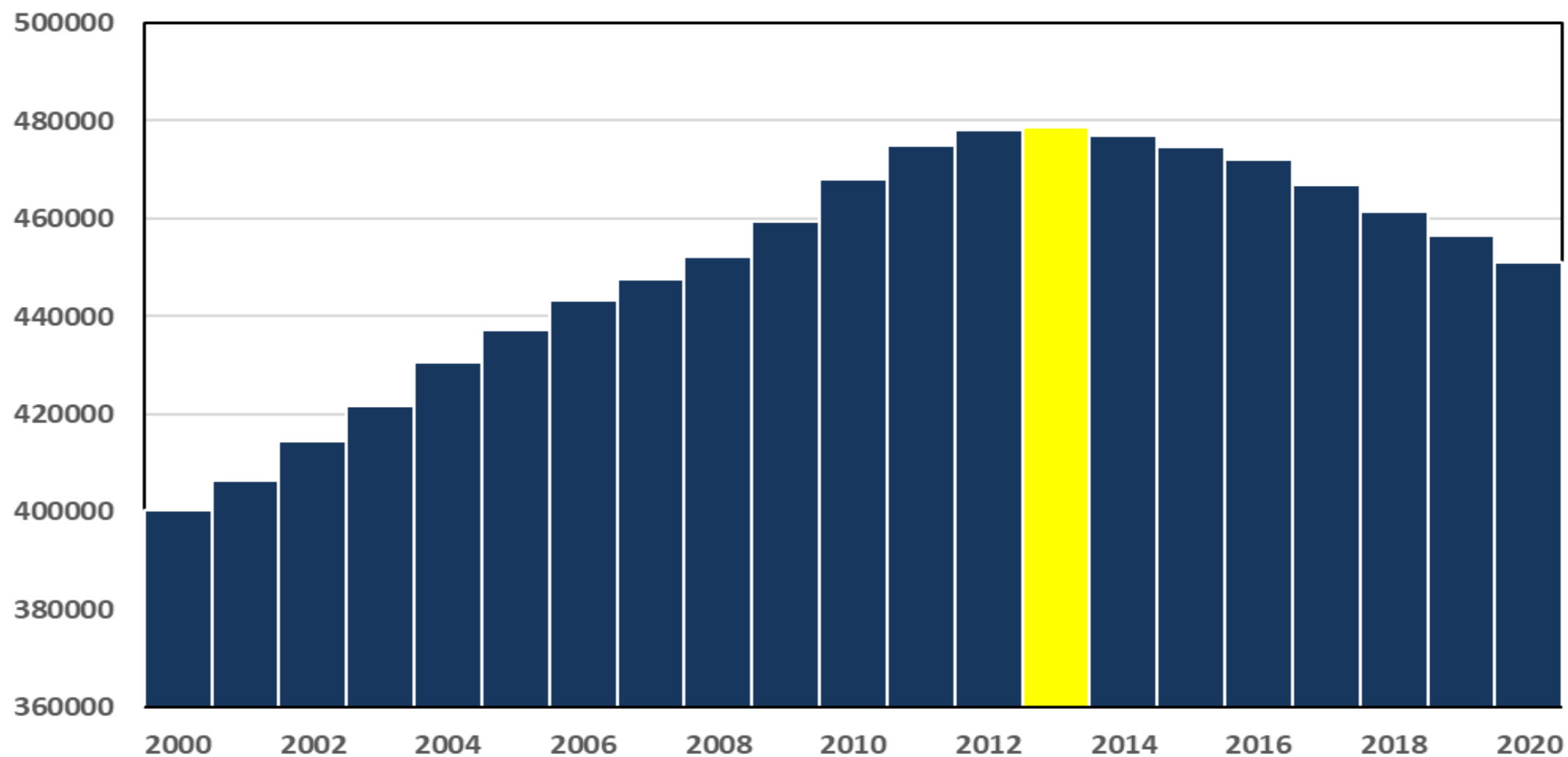


True or false:

Alaska's working-age population has declined.

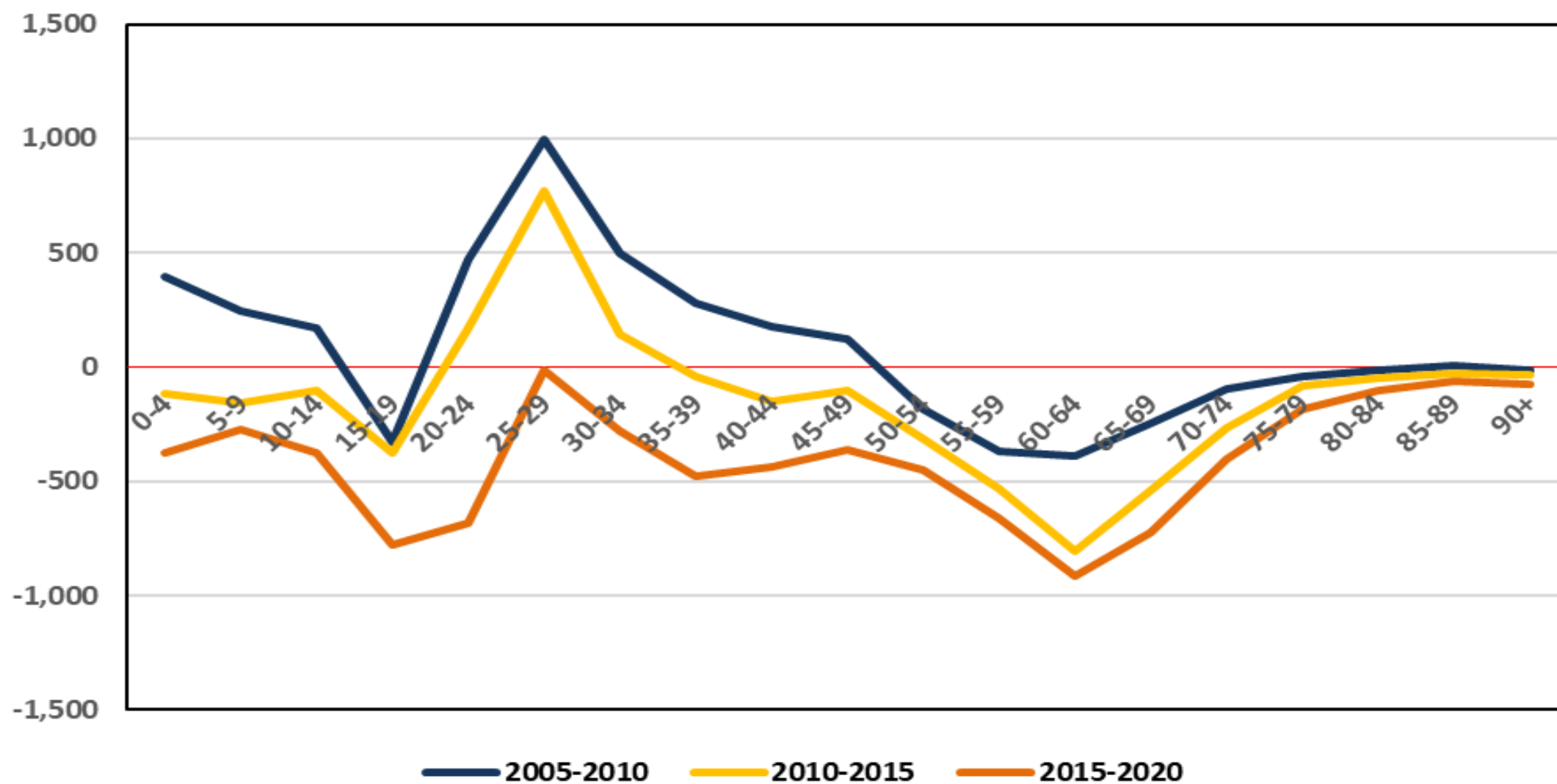
**TRUE**

## Working Age Population, 2000-2020





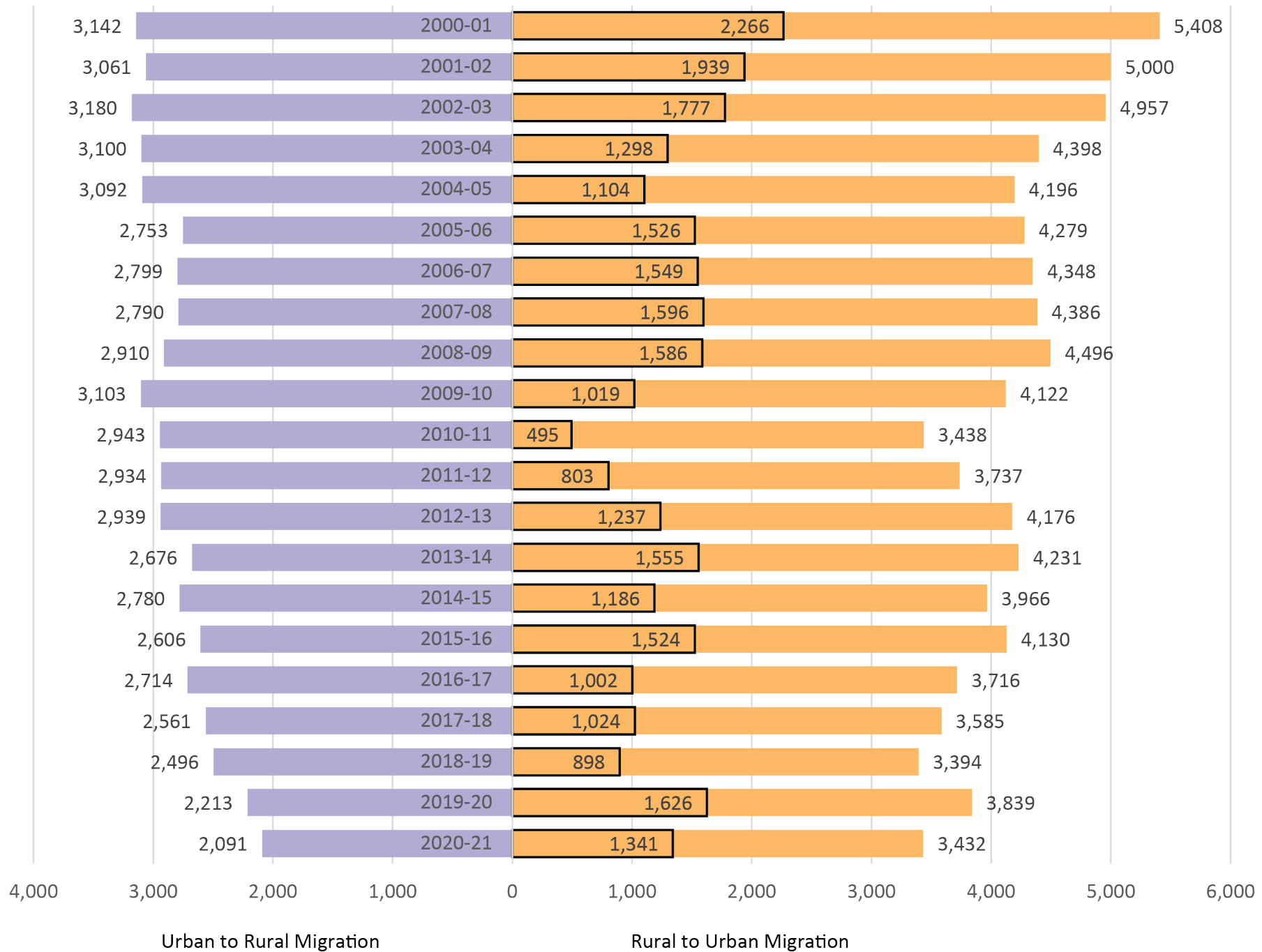
## Net Migration 2005-2010, 2010-2015, 2015-2020



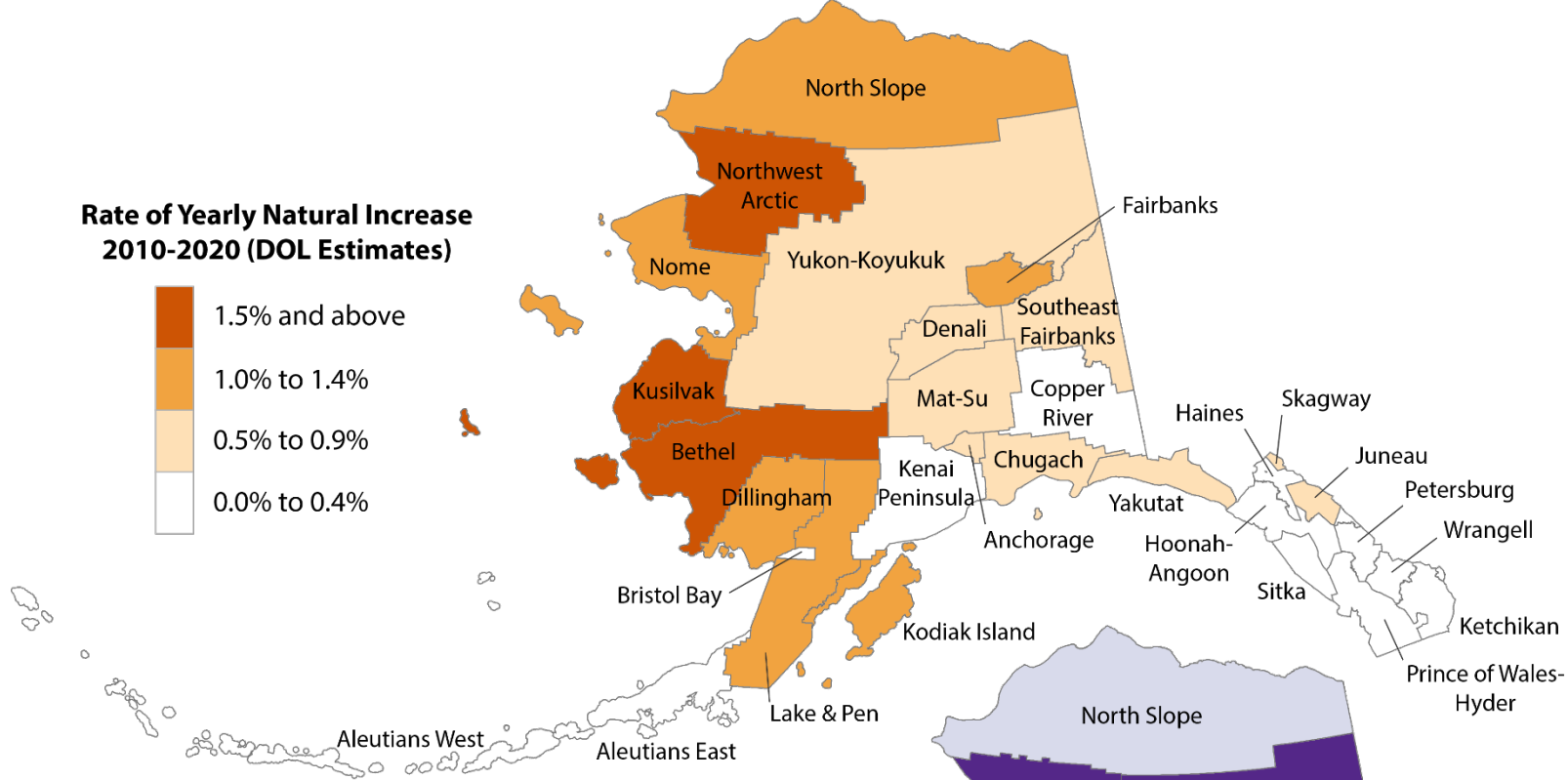
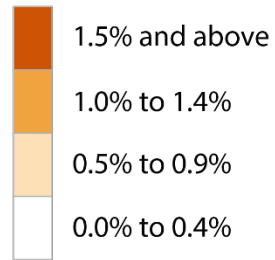
True or false:

Everyone is moving from rural Alaska to urban Alaska.

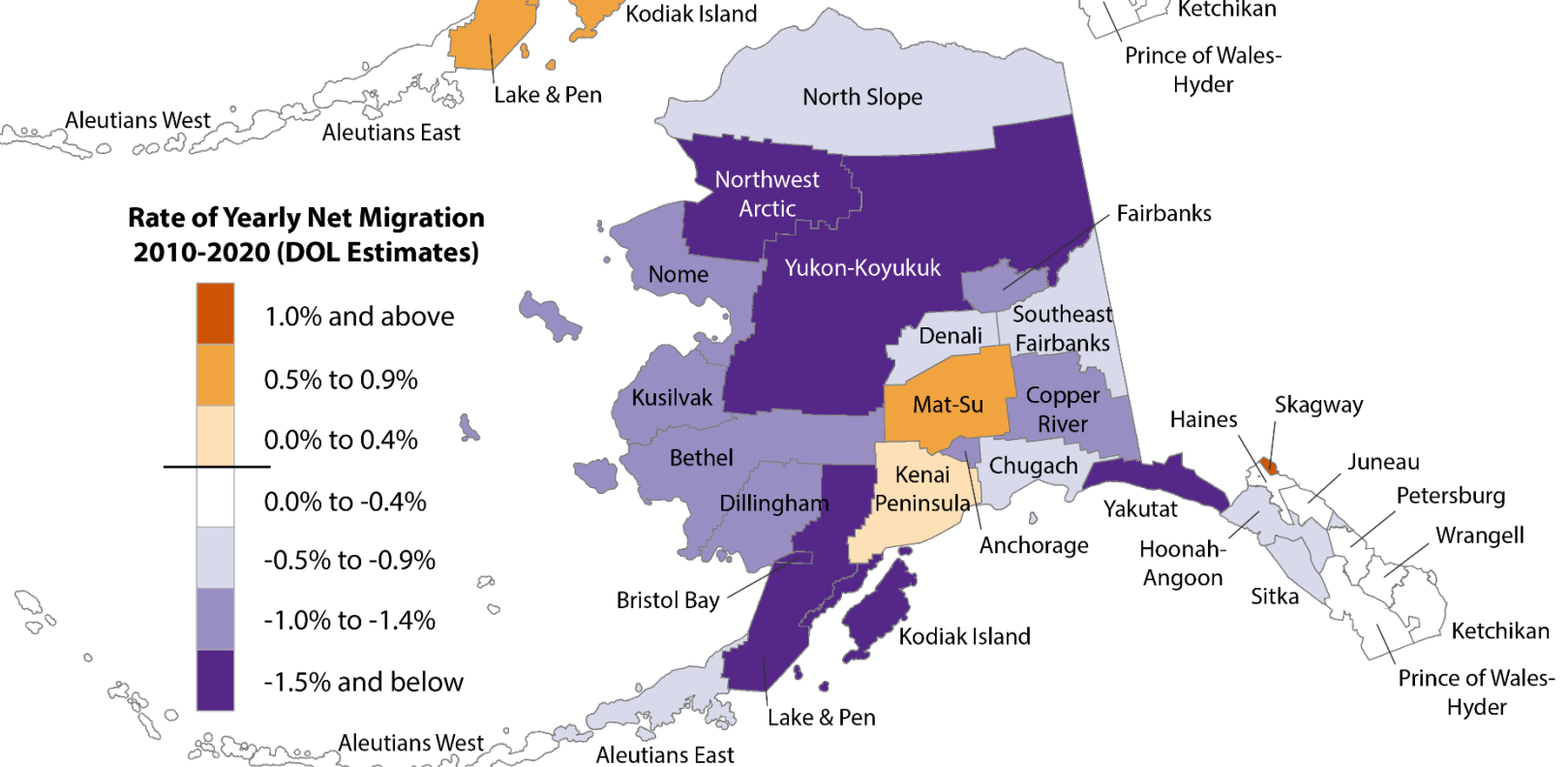
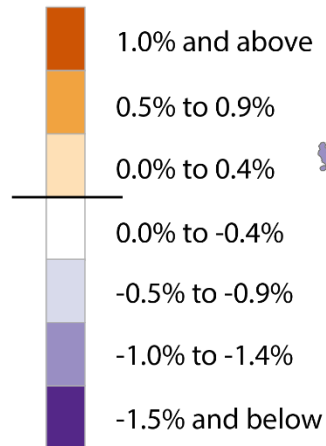
**FALSE**



**Rate of Yearly Natural Increase  
2010-2020 (DOL Estimates)**



**Rate of Yearly Net Migration  
2010-2020 (DOL Estimates)**

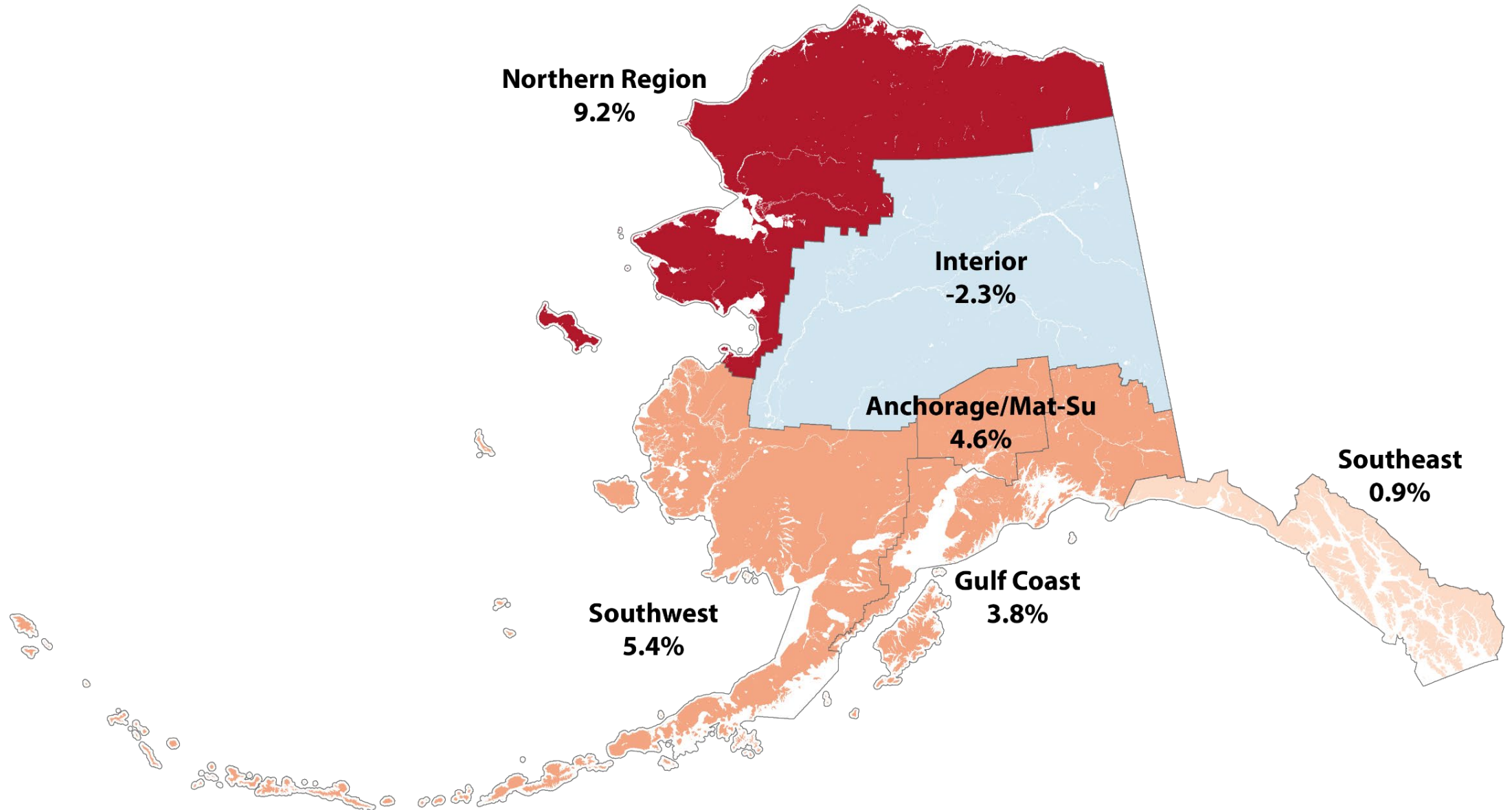


True or false:

The only areas growing are along the Railbelt.

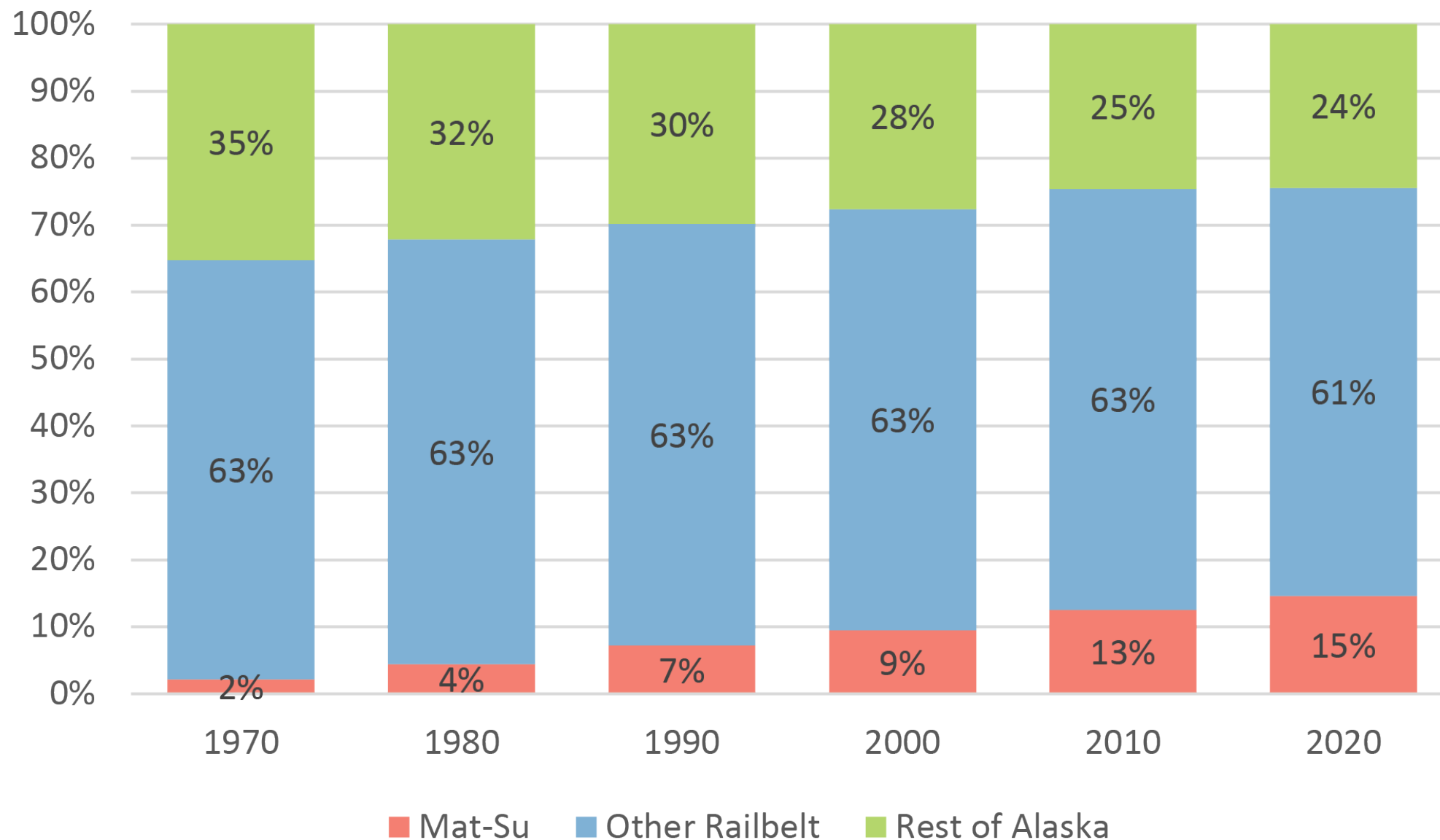
**FALSE**

# Population Growth Rate 2010-2020





# Percentage of Alaska's Total Population

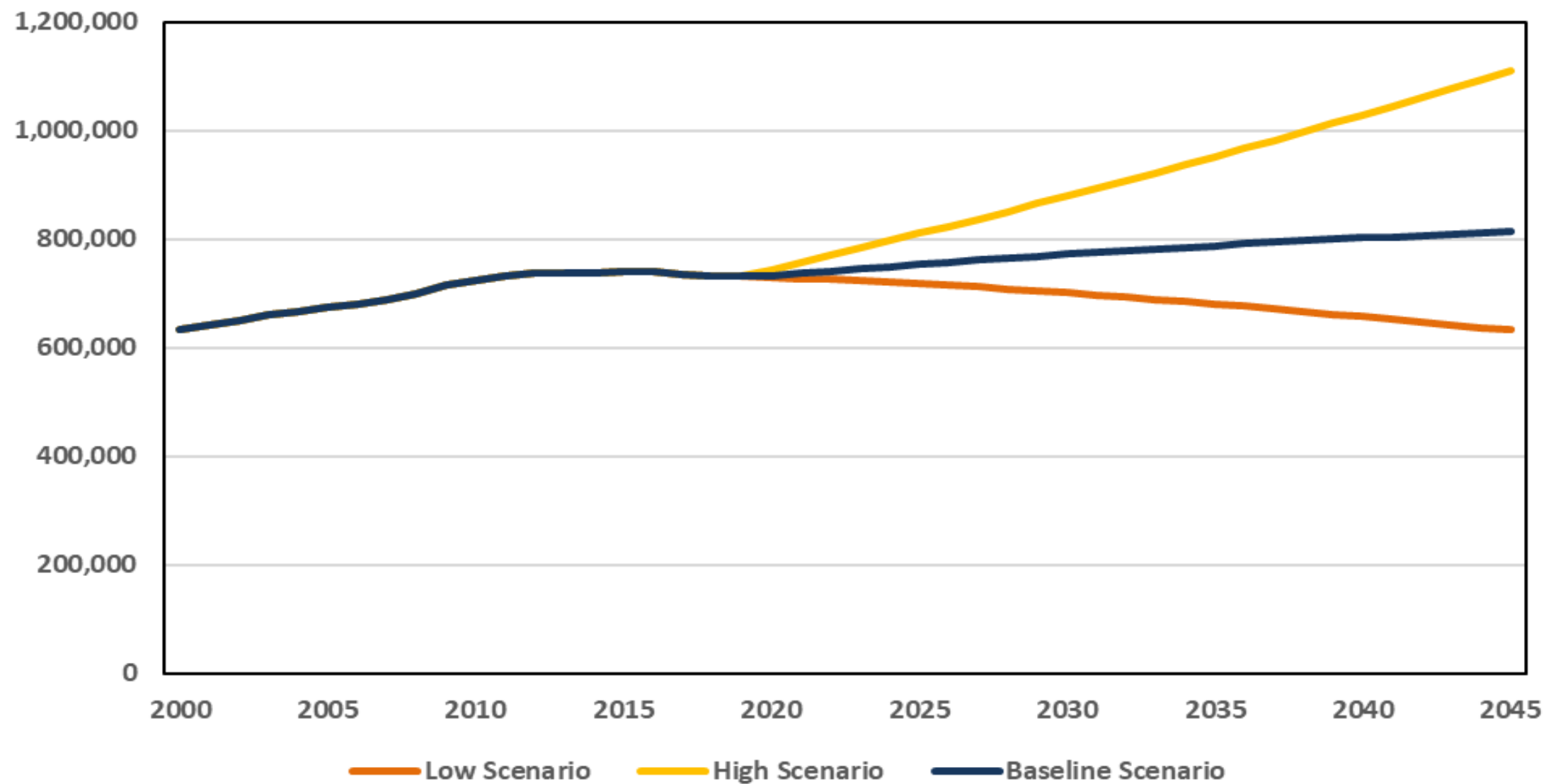


True or false:

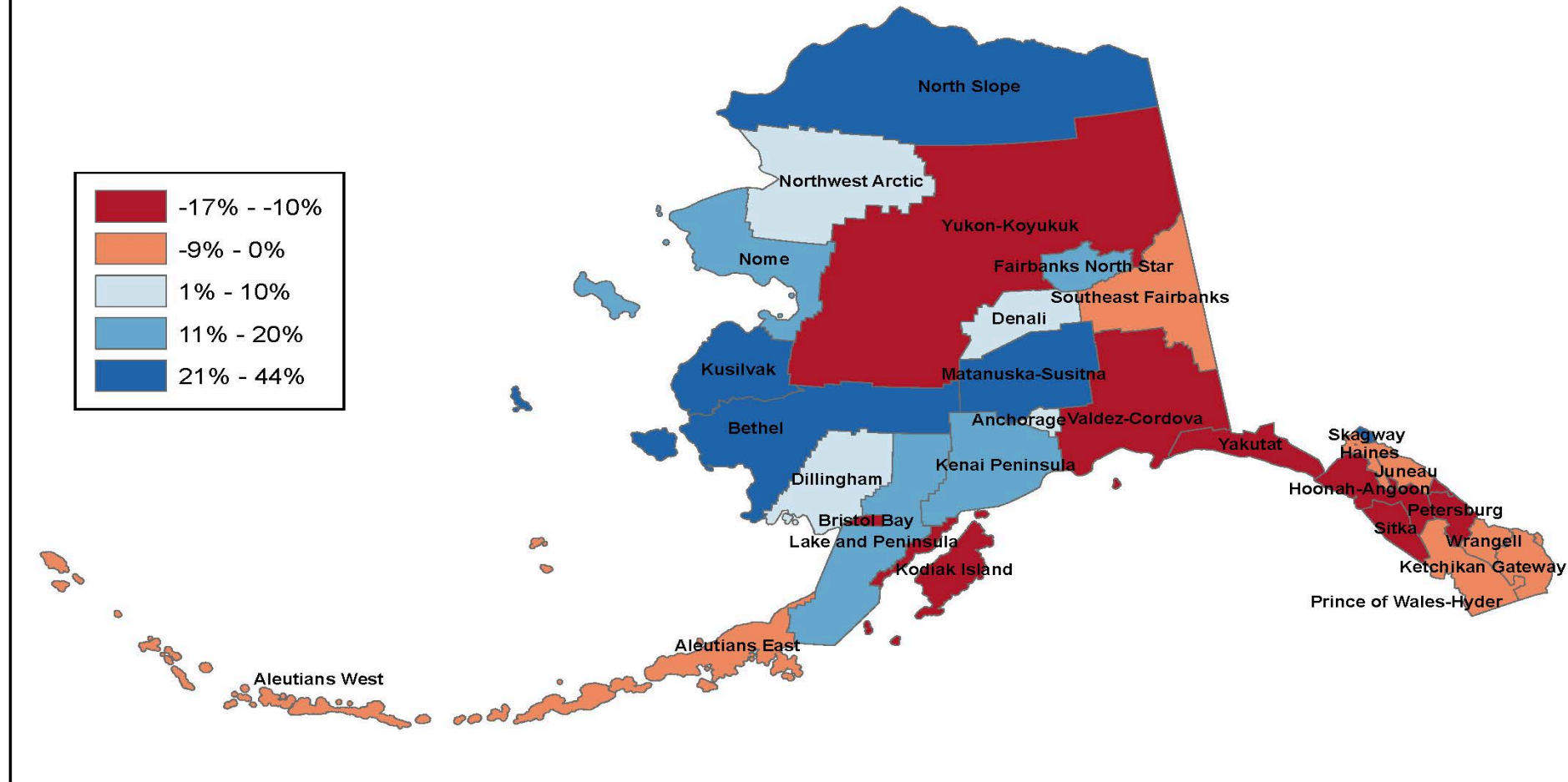
Alaska's population is projected to grow.

**TRUE**

# Total Population, 2000 - 2045



# Borough and Census Area Projections, 2019 - 2045

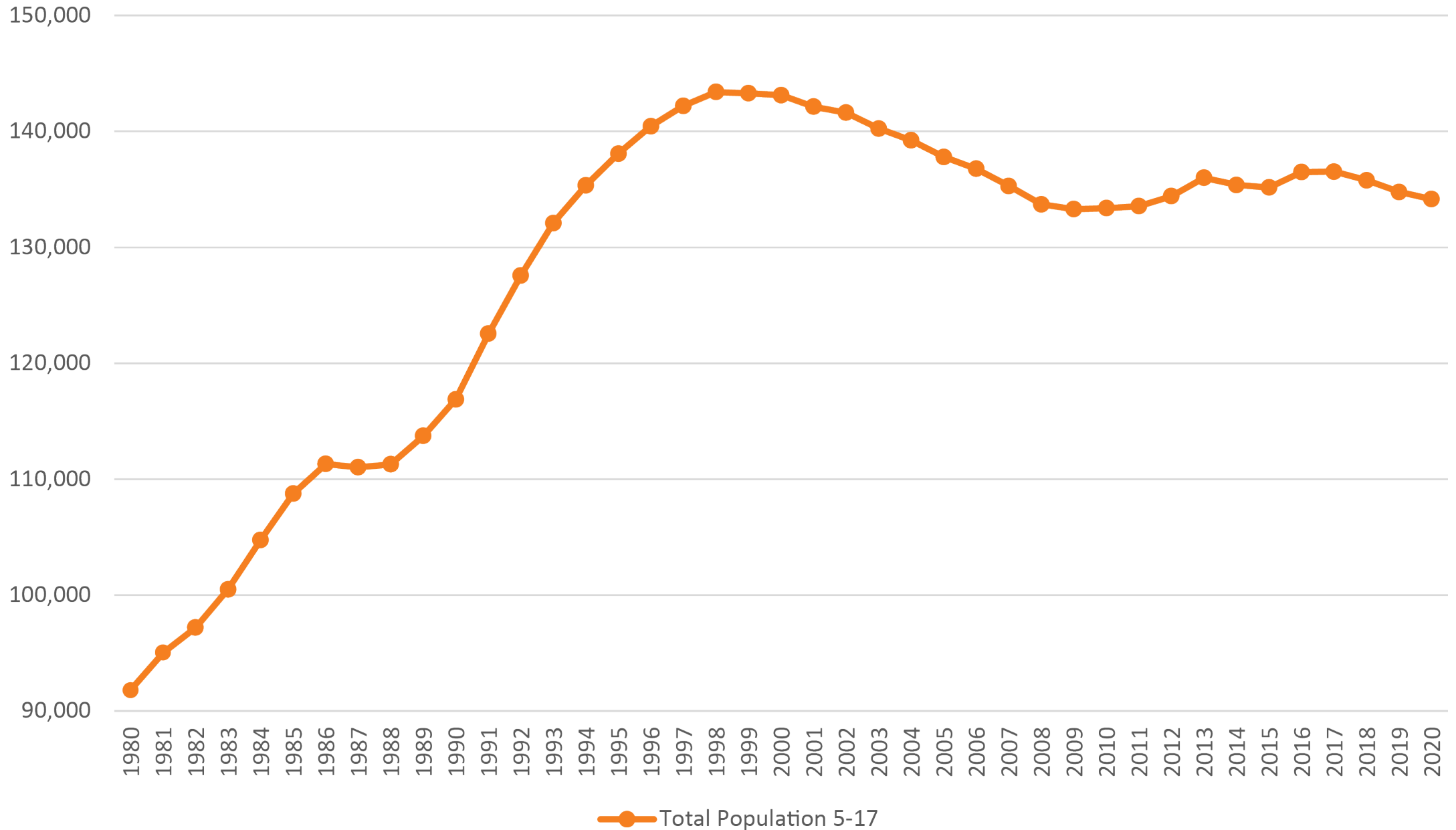


True or false:

We need to build more schools because the number of kids is growing.

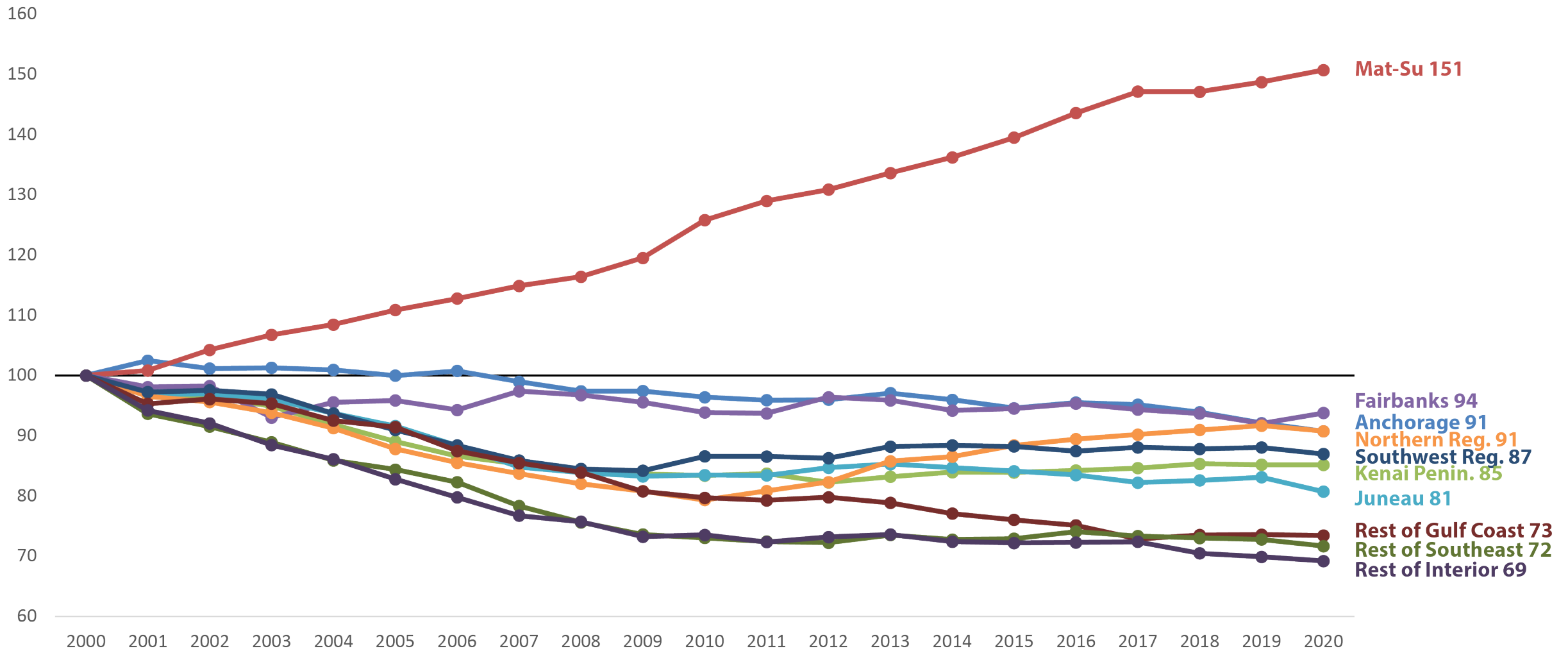
**MOSTLY FALSE**

# Total Population 5 to 17 years old





# School Age (5-17) population 2000-2020 as a percentage of 2000



# Thank you!

[david.howell@alaska.gov](mailto:david.howell@alaska.gov)

[eric.sandberg@alaska.gov](mailto:eric.sandberg@alaska.gov)

[liz.brooks@alaska.gov](mailto:liz.brooks@alaska.gov)