

# ***Unemployment Insurance Actuarial Study and Financial Handbook***

## ***Updated Tables for 2007***



***ALASKA DEPARTMENT OF LABOR  
& WORKFORCE DEVELOPMENT***

Sarah Palin, Governor  
Commissioner Click Bishop

Brynn Keith, Chief  
Research and Analysis

James Wilson, UI Actuary  
Lennon Weller, Economist  
Layout by Sam Dapcevich

Printed January 2009

Visit the UI Actuarial Web Site at:  
[laborstats.alaska.gov](http://laborstats.alaska.gov)

Prepared by the Alaska Department of Labor and Workforce Development,  
Research and Analysis Section

## **Preface to the 2007 edition**

Every two years the Alaska Department of Labor and Workforce Development publishes the Unemployment Insurance Actuarial Study and Financial Handbook. The last handbook (2006 edition) was published in November 2007. The next (2008 edition) will be published in November 2009.

In the years between editions of the complete study and handbook, we publish an “Updated Tables” edition, with the latest versions of all data tables and graphs. This publication contains the Updated Tables for 2007.

Readers of this publication may refer to the complete handbook for definitions of technical terms, a short discussion on the history of Alaska’s unemployment insurance legislation, and an explanation of the state’s current unemployment insurance system.

### **Thirty years of UI Handbook publications now available**

With the release of the 2007 edition, there are 30 years of publication history available. All editions of the handbook (1978 to 2007) are available as pdf files on request.

### **Legislative changes to Alaska’s UI system go into effect in 2009**

During the 2008 legislative session, substantive changes were made to the benefit schedule and the UI tax system. A presentation of these changes can be found in the August 2008 edition of Alaska Economic Trends.

For more information contact:

James Wilson, UI Actuary (907) 465 4520

James.Wilson@alaska.gov

Lennon Weller, Economist (907) 465 4507

Lennon.Weller@alaska.gov

# Table of Contents

<b>Preface to the 2007 Edition.....</b>		<b>iii</b>
<b>Chapter 1</b>	<b>Unemployment Insurance Covered Employment and Wages.....</b>	<b>1</b>
Figure 1.1	Employment by Type of UI Coverage, 1986-2007.....	1
Figure 1.2	Average Monthly Covered Employment, 1986-2007.....	1
Figure 1.3	Total Covered Payroll, 1986-2007.....	2
Figure 1.4	Average Weekly Earnings, 1986-2007.....	2
Table 1.1	Nonagricultural Wage and Salary Employment, Covered and Noncovered, 1998-2007.....	3
Table 1.2	Average Monthly Covered Employment by Industry, 2004-2007.....	4
Table 1.3	Total Covered Payroll by Industry, in Thousands, 2004-2007.....	5
Table 1.4	Taxable Covered Payroll by Industry, in Thousands, 2004-2007.....	6
Table 1.5	Average Annual Earnings in Covered Employment by Industry, in Thousands, 2003-2007.....	7
Table 1.6	Average Weekly Earnings in Covered Employment by Industry, in Thousands, 2003-2007.....	8
Table 1.7	Average Monthly Covered Employment by Ownership, 1998-2007.....	9
Table 1.8	Total Covered Payroll by Ownership, in Thousands, 1998-2007.....	10
Table 1.9	Taxable Covered Payroll by Ownership, in Thousands, 1998-2007.....	10
Table 1.10	Average Annual Earnings in Covered Employment by Ownership, 1998-2007.....	11
Table 1.11	Average Weekly Earnings in Covered Employment by Ownership, 1998-2007.....	11
<b>Chapter 2</b>	<b>Unemployment Insurance Benefit Payments.....</b>	<b>12</b>
Figure 2.1	Amount of UI Payments, Regular Benefits, 1986-2007.....	12
Figure 2.2	Alaska Insured Unemployment Rate, 1986 and 2007.....	12
Figure 2.3	UI Regular Benefit Payments by Industry for In-State and Out-of-State Claimants, 2007.....	13
Figure 2.4	Claimants by Processing Center in 2007.....	13
Figure 2.5	Percentage of Unemployed Receiving UI in Alaska 1986-2007.....	14
Table 2.1	Unemployment, 1990-2007.....	14
Table 2.2	Unemployment Insurance Claimant Characteristics, 2007.....	15
Table 2.3	Schedule of Weekly Benefit Amounts.....	16
Table 2.4	Schedule of Weekly Benefits Duration.....	17
Table 2.5	Payment Data, UI Regular Benefits, 1998-2007.....	17
Table 2.6	Average Weekly Benefits as a Percentage of Average Weekly Earnings, 2007.....	18
Table 2.7	Payment Data, UI Extended Benefits, 1998-2007.....	19
Table 2.8	Payment Data, UI State Supplemental Benefits, 1998-2007.....	19
Table 2.9	UI Regular Benefit Payments by Industry - Intrastate, 2004-2007.....	20
Table 2.10	UI Regular Benefit Payments by Industry - Interstate, 2004-2007.....	22
Table 2.11	UI Regular Benefit Payments by Industry - Intrastate and Interstate Total, 2004-2007.....	24
Table 2.12	UI Regular Benefit Payments by Industry - Interstate as a Percentage of Total, 2004-2007.....	26
Table 2.13	Amount of UI Benefit Payments by Census Area, 2007.....	27
Table 2.14	UI Regular Benefit Payments to Interstate Claimants, by State, 2006-2007.....	28
Table 2.15	Payment of Dependents' Benefits, 1998-2007.....	29
Table 2.16	Average Weekly Percentage of Unemployed Receiving UI Benefits, 2007.....	30
<b>Chapter 3</b>	<b>Alaska's Unemployment Insurance Benefit Financing System.....</b>	<b>31</b>
Figure 3.1	UI Trust Fund End-of-Year Balance, 1986-2007.....	31
Figure 3.2	Reserves, Receipts and Tax Rates as a Percentage of Taxable Payroll.....	31
Figure 3.3	Administrative Grants as a Percentage of FUTA Collections.....	32
Table 3.1	Benefit Cost Rate, 1998-2007.....	32

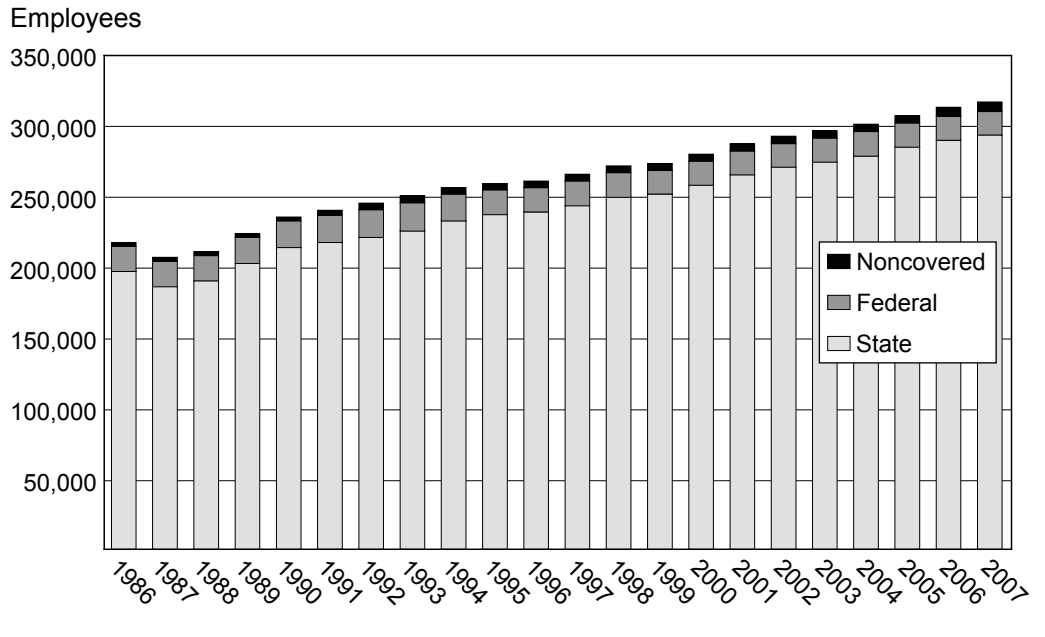
## Table of Contents (continued)

Table 3.2	Benefit Cost Rates by Industry, 2007 .....	33
Table 3.3	Trust Fund Deposits and Disbursements, 1998-2007 .....	34
Table 3.4	Tax Base, Average Employer and Employee Tax Rates and Ratio of Taxable to Total Wages, 1998-2007 .....	35
Table 3.5	Employer Accounts by Rate Type and Average Tax Rates by Industry .....	36
Table 3.6	UI Tax Rate Calculations and Tax Rates by Rate Class, 2008 .....	37
Table 3.7	Administrative Costs, 1998-2007 .....	38
Table 3.8	Collections, UI Regular Benefits Paid - Reimbursable Employment, 1998-2007 .....	38
Table 3.9	Benefits Paid, Taxes Assessed, and Ratio of Benefits to Taxes for Taxable Employment, in Thousands, 2003-2007 .....	39
Table 3.10	Collections, Benefits Paid, Trust Fund Reserves and Average Employer Tax Rate as Percentages of Payroll, 1998-2007 .....	40
Table 3.11	UI Benefits Paid, Taxes Assessed and Covered Payroll by Industry, 2007 .....	40
Table 3.12	UI Benefits Paid as a Percent of Taxes Assessed and Covered Payroll by Industry, 2007 .....	41
Appendix A	Data Sources and Limitations .....	47

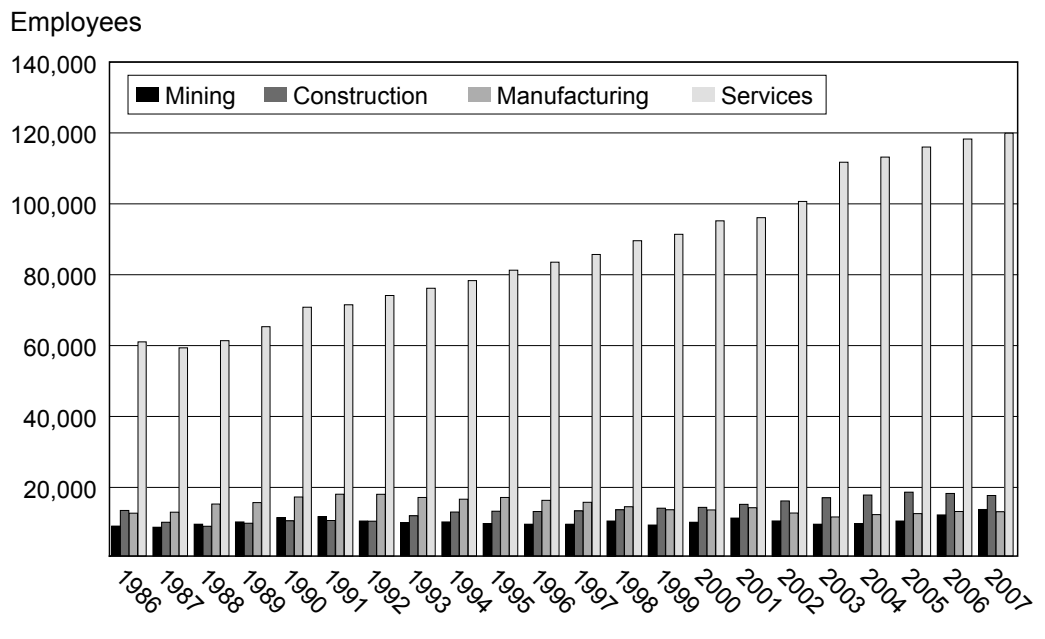
# Chapter 1

## UI Covered Employment and Wages

**Figure 1.1 Employment by Type of UI Coverage 1986-2007**

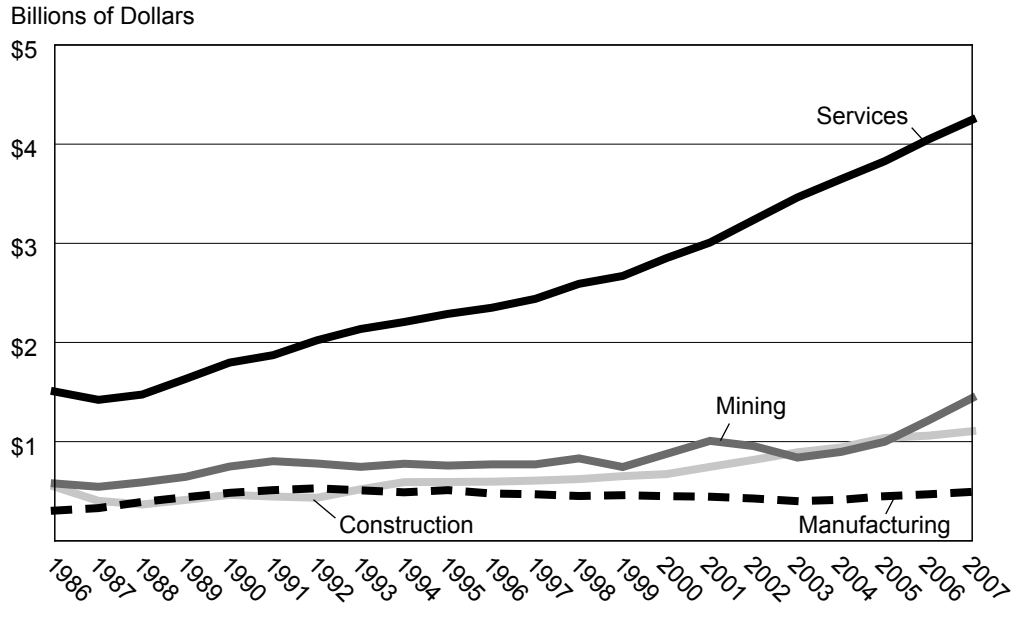


**Figure 1.2 Average Monthly Covered Employment 1986-2007**

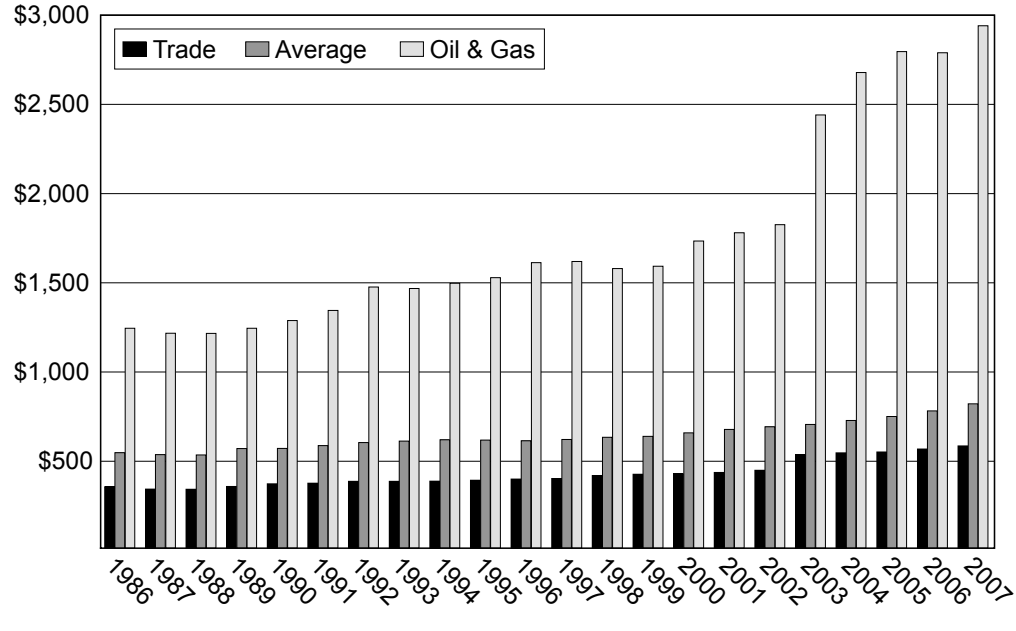


Source for Figures 1.1 and 1.2: Alaska Department of Labor and Workforce Development, Research and Analysis Section

**Figure 1.3 Total Covered Payroll  
1986-2007**



**Figure 1.4 Average Weekly Earnings  
1986-2007**



Source for Figures 1.3 and 1.4: Alaska Department of Labor and Workforce Development, Research and Analysis Section

**Table 1.1**  
**Nonagricultural Wage and Salary Employment,**  
**Covered and Noncovered, 1998-2007**

<b>Year</b>	<b>Total Nonagricultural Wage and Salary Employment</b>	<b>State UI Taxable and Reimbursable Employment</b>	<b>Percent of Total</b>	<b>Alaska Federal Government Employment</b>	<b>Percent of Total</b>	<b>Non-Covered Employment</b>	<b>Percent of Total</b>
1998	272,141	250,251	92.0	17,182	6.3	4,708	1.7
1999	273,839	252,228	92.1	16,828	6.1	4,783	1.7
2000	280,348	258,428	92.2	17,119	6.1	4,801	1.7
2001	287,720	265,945	92.4	16,807	5.8	4,968	1.7
2002	293,117	271,349	92.6	16,757	5.7	5,011	1.7
2003	296,909	274,755	92.5	17,104	5.8	5,050	1.7
2004	301,558	279,161	92.6	17,170	5.7	5,227	1.7
2005	307,537	285,455	92.8	16,974	5.5	5,108	1.7
2006	313,485	290,310	92.6	16,714	5.3	6,461	2.1
2007	317,236	294,016	92.7	16,557	5.2	6,663	2.1

Note: Percentages may not add up to 100 percent due to rounding.

Source: Alaska Department of Labor and Workforce Development, Research and Analysis Section: Quarterly Census of Employment and Wages (QCEW) report to the U.S. Department of Labor

**Table 1.2**  
**Average Monthly Covered Employment<sup>1</sup> by Industry**  
**2004-2007**

	Employment				Percent			
	2004	2005	2006	2007	2004	2005	2006	2007
<b>Total Taxable and Reimbursable</b>	<b>279,161</b>	<b>285,455</b>	<b>290,313</b>	<b>294,016</b>	<b>100.0</b>	<b>100.0</b>	<b>100.0</b>	<b>100.0</b>
Agriculture, Forestry, Fishing <sup>2</sup> & Hunting	1,025	1,062	941	825	0.4	0.4	0.3	0.3
Mining	9,691	10,513	12,247	13,756	3.5	3.7	4.2	4.7
Oil & Gas Extraction	2,521	2,634	2,890	3,244	0.9	0.9	1.0	1.1
Mining Support	5,813	6,343	7,607	8,559	2.1	2.2	2.6	2.9
Other Mining	1,357	1,536	1,750	1,953	0.5	0.5	0.6	0.7
Utilities	1,883	1,924	1,923	1,918	0.7	0.7	0.7	0.7
Construction	17,848	18,663	18,296	17,713	6.4	6.5	6.3	6.0
Manufacturing	12,319	12,606	13,203	13,136	4.4	4.4	4.5	4.5
Food	9,073	9,234	9,869	9,641	3.3	3.2	3.4	3.3
Wood Products	380	361	343	403	0.1	0.1	0.1	0.1
Other Manufacturing	2,866	3,011	2,991	3,092	1.0	1.1	1.0	1.1
Transportation & Warehousing	19,686	19,975	20,422	20,525	7.1	7.0	7.0	7.0
Trade	41,204	42,169	42,322	42,609	14.8	14.8	14.6	14.5
Information	6,867	6,897	6,936	6,944	2.5	2.4	2.4	2.4
Finance & Insurance	8,569	8,636	8,792	8,967	3.1	3.0	3.0	3.0
Real Estate, Rental & Leasing	5,134	5,318	5,283	5,240	1.8	1.9	1.8	1.8
Professional & Technical Services	11,244	11,606	12,022	12,526	4.0	4.1	4.1	4.3
Management of Companies	1,164	1,204	1,218	1,185	0.4	0.4	0.4	0.4
Administrative & Waste Services	10,962	11,066	11,100	11,440	3.9	3.9	3.8	3.9
Educational Services	27,209	27,976	27,799	28,049	9.7	9.8	9.6	9.5
Health Care & Social Assistance	34,157	35,061	36,487	36,549	12.2	12.3	12.6	12.4
Arts, Entertainment & Recreation	3,900	4,214	4,280	4,370	1.4	1.5	1.5	1.5
Accommodation & Food Services	26,245	26,644	27,074	27,613	9.4	9.3	9.3	9.4
Other Services, except Public Administration	9,266	9,292	9,485	9,661	3.3	3.3	3.3	3.3
Public Administration	29,994	30,063	29,905	30,332	10.7	10.5	10.3	10.3
Unclassified	794	567	580	661	0.3	0.2	0.2	0.2
<b>Total Reimbursable Accounts</b>	<b>59,457</b>	<b>60,546</b>	<b>60,488</b>	<b>61,636</b>				
Transportation & Warehousing	867	895	924	915				
Educational Services	25,516	26,203	25,627	26,171				
Health Care & Social Assistance	9,697	9,794	9,936	10,127				
Other Services, except Public Administration	869	948	842	948				
Public Administration	22,240	22,535	22,981	23,247				
Unclassified	268	171	177	228				

<sup>1</sup> Covered Employment excludes federal government.

<sup>2</sup> Fishing excludes nearly all commercial fish harvesting employment

Notes: Reimbursable account data are included in the uppermost portion of this table. Percentages may not add up to 100 percent due to rounding.

Source: Alaska Department of Labor and Workforce Development, Research and Analysis Section: Quarterly Census of Employment and Wages (QCEW) report to the U.S. Department of Labor



**Table 1.3**  
**Total Covered Payroll<sup>1</sup> by Industry**  
**In Thousands, 2004-2007**

	Wages				Percent			
	2004	2005	2006	2007	2004	2005	2006	2007
<b>Total Taxable and Reimbursable</b>	<b>\$10,582,052</b>	<b>\$11,148,894</b>	<b>\$11,815,332</b>	<b>\$12,568,882</b>	<b>100.0</b>	<b>100.0</b>	<b>100.0</b>	<b>100.0</b>
Agriculture, Forestry, Fishing <sup>2</sup> & Hunting	41,194	42,299	35,520	32,383	0.4	0.4	0.3	0.3
Mining	896,715	999,400	1,214,615	1,440,028	8.5	9.0	10.3	11.5
Oil & Gas Extraction	351,171	382,916	419,200	496,030	3.3	3.4	3.5	3.9
Mining Support	451,727	495,621	655,588	782,392	4.3	4.4	5.5	6.2
Other Mining	93,817	120,863	139,827	161,606	0.9	1.1	1.2	1.3
Utilities	112,887	118,026	118,102	123,532	1.1	1.1	1.0	1.0
Construction	941,676	1,037,408	1,060,905	1,105,439	8.9	9.3	9.0	8.8
Manufacturing	414,266	450,063	469,647	494,342	3.9	4.0	4.0	3.9
Food	265,409	287,385	303,763	317,240	2.5	2.6	2.6	2.5
Wood Products	11,615	11,944	11,440	14,781	0.1	0.1	0.1	0.1
Other Manufacturing	137,242	150,734	154,444	162,321	1.3	1.4	1.3	1.3
Transportation & Warehousing	940,857	958,428	995,435	1,071,585	8.9	8.6	8.4	8.5
Trade	1,171,711	1,210,417	1,250,882	1,298,584	11.1	10.9	10.6	10.3
Information	330,085	334,557	345,874	358,682	3.1	3.0	2.9	2.9
Finance & Insurance	394,539	413,013	450,765	480,128	3.7	3.7	3.8	3.8
Real Estate, Rental & Leasing	156,416	168,442	170,993	175,311	1.5	1.5	1.4	1.4
Professional & Technical Services	547,937	602,973	652,052	732,689	5.2	5.4	5.5	5.8
Management of Companies	72,061	74,184	88,138	88,097	0.7	0.7	0.7	0.7
Administrative & Waste Services	346,118	365,398	388,876	423,841	3.3	3.3	3.3	3.4
Educational Services	1,009,720	1,063,961	1,085,164	1,094,538	9.5	9.5	9.2	8.7
Health Care & Social Assistance	1,235,587	1,285,608	1,376,755	1,436,149	11.7	11.5	11.7	11.4
Arts, Entertainment & Recreation	61,337	66,500	71,594	76,569	0.6	0.6	0.6	0.6
Accommodation & Food Services	458,092	471,319	496,118	525,457	4.3	4.2	4.2	4.2
Other Services, except Public Administration	262,710	263,736	278,095	292,067	2.5	2.4	2.4	2.3
Public Administration	1,157,047	1,204,829	1,247,645	1,297,395	10.9	10.8	10.6	10.3
Unclassified	31,098	18,331	18,157	22,067	0.3	0.2	0.2	0.2
<b>Total Reimbursable Accounts</b>	<b>\$2,411,561</b>	<b>\$2,519,453</b>	<b>\$2,600,402</b>	<b>\$2,691,732</b>				
Transportation & Warehousing	44,162	48,642	50,226	52,673				
Educational Services	959,755	1,010,692	1,012,423	1,036,625				
Health Care & Social Assistance	406,308	415,962	439,691	461,444				
Other Services, except Public Administration	19,593	21,484	20,173	24,151				
Public Administration	965,320	1,016,466	1,071,401	1,109,270				
Unclassified	16,424	6,207	6,488	7,553				

<sup>1</sup> Covered Employment excludes federal government.

<sup>2</sup> Fishing excludes nearly all commercial fish harvesting employment

Notes: Reimbursable account data are included in the uppermost portion of this table. Percentages may not add up to 100 percent due to rounding.

Source: Alaska Department of Labor and Workforce Development, Research and Analysis Section: Quarterly Census of Employment and Wages (QCEW) report to the U.S. Department of Labor

**Table 1.4**  
**Taxable Covered Payroll by Industry**  
**In Thousands, 2004-2007**

	Wages				Percent			
	2004	2005	2006	2007	2004	2005	2006	2007
<b>Total</b>	<b>\$5,130,288</b>	<b>\$5,436,868</b>	<b>\$5,720,285</b>	<b>\$6,074,631</b>	<b>100.0</b>	<b>100.0</b>	<b>100.0</b>	<b>101.0</b>
Agriculture, Forestry, Fishing <sup>1</sup> & Hunting	30,226	31,129	27,280	23,895	0.6	0.6	0.5	0.4
Mining	317,623	360,815	445,441	520,783	6.2	6.6	7.8	8.6
Oil & Gas Extraction	75,492	81,715	92,632	109,474	1.5	1.5	1.6	1.8
Mining Support	199,102	227,272	290,506	339,105	3.9	4.2	5.1	5.6
Other Mining	43,029	51,827	62,303	72,204	0.8	1.0	1.1	1.2
Utilities	50,572	54,142	55,282	57,745	1.0	1.0	1.0	1.0
Construction	606,097	666,348	672,887	690,748	11.8	12.3	11.8	11.4
Manufacturing	316,668	338,762	349,422	371,870	6.2	6.2	6.1	6.1
Food	228,433	246,838	256,330	270,137	4.5	4.5	4.5	4.4
Wood Products	9,125	9,074	9,238	11,788	0.2	0.2	0.2	0.2
Other Manufacturing	79,111	82,851	83,853	89,944	1.5	1.5	1.5	1.5
Transportation & Warehousing	475,093	501,254	525,304	554,810	9.3	9.2	9.2	9.1
Trade	851,522	884,561	917,587	957,571	16.6	16.3	16.0	15.8
Information	175,050	178,017	182,979	191,942	3.4	3.3	3.2	3.2
Finance & Insurance	220,642	231,445	244,054	258,707	4.3	4.3	4.3	4.3
Real Estate, Rental & Leasing	111,814	121,494	121,548	124,470	2.2	2.2	2.1	2.0
Professional & Technical	296,771	324,526	351,240	383,087	5.8	6.0	6.1	6.3
Management of Companies	37,788	40,452	42,601	43,679	0.7	0.7	0.7	0.7
Administrative & Waste Services	247,706	264,634	276,065	301,945	4.8	4.9	4.8	5.0
Educational Services	35,709	37,115	39,132	41,287	0.7	0.7	0.7	0.7
Health Care & Social Assistance	560,943	589,089	631,609	661,428	10.9	10.8	11.0	10.9
Art, Entertainment & Recreation	52,206	56,991	61,165	64,831	1.0	1.0	1.1	1.1
Accommodation & Food Services	410,174	425,338	446,184	473,221	8.0	7.8	7.8	7.8
Other Service, except Public Administration	176,769	176,728	185,963	195,421	3.4	3.3	3.3	3.2
Public Administration	140,767	139,463	130,742	140,220	2.7	2.6	2.3	2.3
Unclassified	16,150	14,567	13,801	16,973	0.3	0.3	0.2	0.3

<sup>1</sup> Fishing excludes nearly all commercial fish harvesting employment

Note: Percentages may not add up to 100 percent due to rounding.

Source: Alaska Department of Labor and Workforce Development, Research and Analysis Section: Quarterly Census of Employment and Wages (QCEW) report to the U.S. Department of Labor

**Table 1.5**  
**Average Annual Earnings in Covered Employment<sup>1</sup> by Industry**  
**In Thousands, 2003-2007**

	2003	2004	2005	2006	2007
<b>Total Taxable and Reimbursable</b>	<b>\$36,736</b>	<b>\$37,907</b>	<b>\$39,057</b>	<b>\$40,699</b>	<b>\$42,749</b>
Agriculture, Forestry, Fishing <sup>2</sup> & Hunting	40,092	40,189	39,830	37,747	39,252
Mining	87,558	92,531	95,063	99,177	104,684
Oil & Gas Extraction	126,944	139,298	145,374	145,052	152,907
Mining Support	74,839	77,710	78,137	86,182	91,412
Other Mining	66,475	69,136	78,687	79,901	82,748
Utilities	57,522	59,951	61,344	61,415	64,407
Construction	52,303	52,761	55,586	57,986	62,408
Manufacturing	34,276	33,628	35,702	35,571	37,633
Food	30,164	29,253	31,122	30,780	32,905
Wood Products	30,872	30,566	33,086	33,353	36,677
Other Manufacturing	46,912	47,886	50,061	51,636	52,497
Transportation & Warehousing	45,224	47,793	47,981	48,743	52,209
Trade	27,915	28,437	28,704	29,556	30,477
Information	44,934	48,068	48,508	49,866	51,654
Finance & Insurance	45,351	46,043	47,825	51,270	53,544
Real Estate, Rental & Leasing	28,776	30,467	31,674	32,367	33,456
Professional & Technical Services	46,267	48,732	51,954	54,238	58,493
Management of Companies	60,166	61,908	61,615	72,363	74,343
Administrative & Waste Services	29,775	31,574	33,020	35,034	37,049
Educational Services	35,523	37,110	38,031	39,036	39,022
Health Care & Social Assistance	35,264	36,174	36,668	37,733	39,294
Arts, Entertainment & Recreation	15,086	15,727	15,781	16,728	17,522
Accommodation & Food Services	16,774	17,454	17,689	18,325	19,029
Other Services, except Public Administration	27,161	28,352	28,383	29,319	30,232
Public Administration	38,132	38,576	40,077	41,720	42,773
Unclassified	59,412	38,873	32,330	31,305	33,384
<b>Total Reimbursable Accounts</b>	<b>\$39,210</b>	<b>\$40,560</b>	<b>\$41,612</b>	<b>\$42,990</b>	<b>\$43,671</b>
Transportation & Warehousing	48,758	50,937	54,349	54,357	57,566
Educational Services	36,034	37,614	38,572	39,506	39,610
Health Care & Social Assistance	40,685	41,900	42,471	44,252	45,566
Other Services, except Public Administration	21,405	22,547	22,662	23,958	25,476
Public Administration	42,758	43,405	45,106	46,621	47,717

<sup>1</sup> Covered Employment excludes federal government.

<sup>2</sup> Fishing excludes nearly all commercial fish harvesting employment

Source: Alaska Department of Labor and Workforce Development, Research and Analysis Section: Quarterly Census of Employment and Wages (QCEW) report to the U.S. Department of Labor

**Table 1.6**  
**Average Weekly Earnings in Covered Employment<sup>1</sup> by Industry**  
**In Thousands, 2003-2007**

	2003	2004	2005	2006	2007
<b>Total Reimbursable and Non-Reimbursable</b>	<b>\$706.47</b>	<b>\$728.98</b>	<b>\$751.11</b>	<b>\$782.68</b>	<b>\$822.10</b>
Agriculture, Forestry, Fishing <sup>2</sup> & Hunting	771.01	772.87	765.95	725.91	754.85
Mining	1,683.80	1,779.44	1,828.14	1,907.24	2,013.15
Oil & Gas Extraction	2,441.22	2,678.81	2,795.66	2,789.46	2,940.52
Mining Support	1,439.21	1,494.42	1,502.63	1,657.35	1,757.92
Other Mining	1,278.37	1,329.53	1,513.21	1,536.56	1,591.30
Utilities	1,106.19	1,152.90	1,179.69	1,181.07	1,238.59
Construction	1,005.83	1,014.63	1,068.97	1,115.11	1,200.16
Manufacturing	659.15	646.70	686.58	684.06	723.70
Food	580.08	562.55	598.51	591.91	632.79
Wood Products	593.70	587.80	636.27	641.40	705.33
Other Manufacturing	902.16	920.89	962.71	993.00	1,009.56
Transportation & Warehousing	869.69	919.10	922.72	937.37	1,004.01
Trade	536.83	546.86	552.00	568.39	586.09
Information	864.11	924.39	932.84	958.97	993.34
Finance & Insurance	872.13	885.43	919.70	985.96	1,029.69
Real Estate, Rental & Leasing	553.39	585.90	609.11	622.44	643.39
Professional & Technical Services	889.75	937.14	999.11	1,043.04	1,124.87
Management of Companies	1,157.05	1,190.54	1,184.90	1,391.59	1,429.68
Administrative & Waste Services	572.60	607.20	635.00	673.73	712.48
Educational Services	683.13	713.65	731.37	750.69	750.43
Health Care & Social Assistance	678.16	695.65	705.15	725.63	755.65
Arts, Entertainment & Recreation	290.12	302.45	303.48	321.68	336.95
Accommodation & Food Services	322.57	335.66	340.18	352.39	365.95
Other Services, except Public Administration	522.32	545.23	545.83	563.84	581.38
Public Administration	733.30	741.85	770.71	802.31	822.56
Unclassified	1,142.54	747.55	621.73	602.02	642.01
<b>Total Reimbursable Accounts</b>	<b>\$754.04</b>	<b>\$780.00</b>	<b>\$800.23</b>	<b>\$826.74</b>	<b>\$839.84</b>
Transportation & Warehousing	937.66	979.55	1,045.17	1,045.33	1,107.04
Educational Services	692.97	723.34	741.76	759.73	761.72
Health Care & Social Assistance	782.40	805.78	816.75	851.01	876.26
Other Services, except Public Administration	411.63	433.59	435.82	460.74	489.92
Public Administration	822.27	834.71	867.43	896.56	917.63

<sup>1</sup> Covered Employment excludes federal government.

<sup>2</sup> Fishing excludes nearly all commercial fish harvesting employment

Notes: Average Weekly Earnings = Average Annual Earnings (Table 1.5) divided by 52.

Source: Alaska Department of Labor and Workforce Development, Research and Analysis Section: Quarterly Census of Employment and Wages (QCEW) report to the U.S. Department of Labor

**Table 1.7**  
**Average Monthly Covered Employment<sup>1</sup> by Ownership**  
**1998-2007**

<b>Ownership</b>	<b>1998</b>	<b>1999</b>	<b>2000</b>	<b>2001</b>	<b>2002</b>	<b>2003</b>	<b>2004</b>	<b>2005</b>	<b>2006</b>	<b>2007</b>
Total	250,251	252,228	258,428	265,945	271,350	274,755	279,161	285,455	290,310	294,016
State Government	19,831	19,950	20,198	20,988	21,830	22,022	21,831	22,077	22,433	22,648
Local Government	31,276	31,305	31,468	35,281	37,353	37,076	36,428	36,906	36,474	37,042
Private Industry	199,144	200,973	206,762	209,676	212,167	215,657	220,902	226,472	231,403	234,326
Taxable	191,254	193,007	198,361	200,825	203,010	205,949	211,161	216,533	221,507	224,318
Reimbursable	7,890	7,966	8,401	8,851	9,157	9,708	9,741	9,939	9,896	10,008
<b>Percent Distribution</b>										
Total	100.0	100.0	100.0	100.0	100.0	100.0	100.0	100.0	100.0	100.0
State Government	7.9	7.9	7.8	7.9	8.0	8.0	7.8	7.7	7.7	7.7
Local Government	12.5	12.4	12.2	13.3	13.8	13.5	13.0	12.9	12.6	12.6
Private Industry	79.6	79.7	80.0	78.8	78.2	78.5	79.1	79.3	79.7	79.7
Taxable	76.4	76.5	76.8	75.5	74.8	75.0	75.6	75.9	76.3	76.3
Reimbursable	3.2	3.2	3.3	3.3	3.4	3.5	3.5	3.5	3.4	3.4

<sup>1</sup> Covered Employment excludes federal government.

Note: Percentages may not add up to 100 percent due to rounding.

Source: Alaska Department of Labor and Workforce Development, Research and Analysis Section: Quarterly Census of Employment and Wages (QCEW) report to the U.S. Department of Labor

**Table 1.8**  
**Total Covered Payroll<sup>1</sup> by Ownership**  
**In Thousands, 1998-2007**

<b>Ownership</b>	<b>1998</b>	<b>1999</b>	<b>2000</b>	<b>2001</b>	<b>2002</b>	<b>2003</b>	<b>2004</b>	<b>2005</b>	<b>2006</b>	<b>2007</b>
Total	\$8,261,192	\$8,389,193	\$8,862,098	\$9,384,548	\$9,779,538	\$10,093,400	\$10,582,052	\$11,148,894	\$11,815,332	\$12,568,882
State Government	761,013	766,996	800,004	826,632	879,064	910,098	913,913	976,244	1,011,295	1,060,206
Local Government	1,120,982	1,125,164	1,127,624	1,218,672	1,280,960	1,312,305	1,339,864	1,373,025	1,415,132	1,437,176
Private Industry	6,379,197	6,497,033	6,934,470	7,339,244	7,619,514	7,870,997	8,328,275	8,799,625	9,388,905	10,071,500
Taxable	6,136,602	6,248,464	6,652,396	7,029,444	7,285,303	7,511,133	7,945,879	8,405,074	8,977,580	9,643,328
Reimbursable	242,595	248,569	282,074	309,800	334,211	359,864	382,396	394,551	411,325	428,172
<b>Percent Distribution</b>										
Total	100.0	100.0	100.0	100.0	100.0	100.0	100.0	100.0	100.0	100.0
State Government	9.2	9.1	9.0	8.8	9.0	9.0	8.6	8.8	8.6	8.4
Local Government	13.6	13.4	12.7	13.0	13.1	13.0	12.7	12.3	12.0	11.4
Private Industry	77.2	77.4	78.2	78.2	77.9	78.0	78.7	78.9	79.5	80.1
Taxable	74.3	74.5	75.1	74.9	74.5	74.4	75.1	75.4	76.0	76.7
Reimbursable	2.9	3.0	3.2	3.3	3.4	3.6	3.6	3.5	3.5	3.4

<sup>1</sup> Covered Employment excludes federal government.

Note: Percentages may not add up to 100 percent due to rounding.

Source: Alaska Department of Labor and Workforce Development, Research and Analysis Section: Quarterly Census of Employment and Wages (QCEW) report to the U.S. Department of Labor

**Table 1.9**  
**Taxable Covered Payroll by Ownership**  
**In Thousands, 1998-2007**

<b>Ownership</b>	<b>1998</b>	<b>1999</b>	<b>2000</b>	<b>2001</b>	<b>2002</b>	<b>2003</b>	<b>2004</b>	<b>2005</b>	<b>2006</b>	<b>2007</b>
Total	\$3,995,639	\$4,124,730	\$4,396,916	\$4,556,600	\$4,722,968	\$4,874,371	\$5,130,288	\$5,436,868	\$5,720,285	\$6,074,631
State Government	8,841	8,933	9,125	9,491	8,877	8,675	8,911	8,965	9,039	8,857
Local Government	86,997	83,215	84,403	133,487	147,575	149,563	154,032	154,521	151,072	161,763
Private Industry	3,899,801	4,032,582	4,303,388	4,413,622	4,566,516	4,716,133	4,967,345	5,273,382	5,560,174	5,904,011
<b>Percent Distribution</b>										
Total	100.0	100.0	100.0	100.0	100.0	100.0	100.0	100.0	100.0	100.0
State Government	0.2	0.2	0.2	0.2	0.2	0.2	0.2	0.2	0.2	0.1
Local Government	2.2	2.0	1.9	2.9	3.1	3.1	3.0	2.8	2.6	2.7
Private Industry	97.6	97.8	97.9	96.9	96.7	96.8	96.8	97.0	97.2	97.2

Note: Percentages may not add up to 100 percent due to rounding.

Source: Alaska Department of Labor and Workforce Development, Research and Analysis Section: Quarterly Census of Employment and Wages (QCEW) report to the U.S. Department of Labor

**Table 1.10**  
**Average Annual Earnings in Covered Employment<sup>1</sup> by Ownership**  
**In Thousands, 1998-2007**

<b>Ownership</b>	<b>1998</b>	<b>1999</b>	<b>2000</b>	<b>2001</b>	<b>2002</b>	<b>2003</b>	<b>2004</b>	<b>2005</b>	<b>2006</b>	<b>2007</b>
Total	\$33,012	\$33,260	\$34,292	\$35,288	\$36,040	\$36,736	\$37,907	\$39,057	\$40,699	\$42,749
State Government	38,375	38,446	39,608	39,386	40,269	41,327	41,863	44,220	45,081	46,812
Local Government	35,842	35,942	35,834	34,542	34,293	35,395	36,781	37,203	38,798	38,799
Private Industry	32,033	32,328	33,538	35,003	35,913	36,498	37,701	38,855	40,574	42,981
Taxable	32,086	32,374	33,537	35,003	35,887	36,471	37,629	38,817	40,530	42,990
Reimbursable	30,747	31,204	33,576	35,002	36,498	37,069	39,256	39,697	41,565	42,783

<sup>1</sup> Covered Employment excludes federal government.

Note: Average Annual Earnings = Total Covered Payroll (Table 1.8) divided by Average Covered Employment (Table 1.7).

Source: Alaska Department of Labor and Workforce Development, Research and Analysis Section: Quarterly Census of Employment and Wages (QCEW) report to the U.S. Department of Labor

**Table 1.11**  
**Average Weekly Earnings in Covered Employment<sup>1</sup>**  
**By Ownership, 1998-2007**

<b>Ownership</b>	<b>1998</b>	<b>1999</b>	<b>2000</b>	<b>2001</b>	<b>2002</b>	<b>2003</b>	<b>2004</b>	<b>2005</b>	<b>2006</b>	<b>2007</b>
Total	\$634.84	\$639.62	\$659.47	\$678.62	\$693.08	\$706.46	\$728.98	\$751.09	\$782.69	\$822.11
State Government	737.98	739.34	761.69	757.42	774.40	794.75	805.06	850.38	866.94	900.24
Local Government	689.26	691.19	689.12	664.27	659.48	680.67	707.33	715.45	746.12	746.13
Private Industry	616.02	621.69	644.97	673.13	690.63	701.88	725.02	747.22	780.27	826.55
Taxable	617.04	622.58	644.94	673.13	690.13	701.36	723.63	746.47	779.41	826.72
Reimbursable	591.29	600.07	645.70	673.12	701.88	712.86	754.92	763.41	799.32	822.75

<sup>1</sup> Covered Employment excludes federal government.

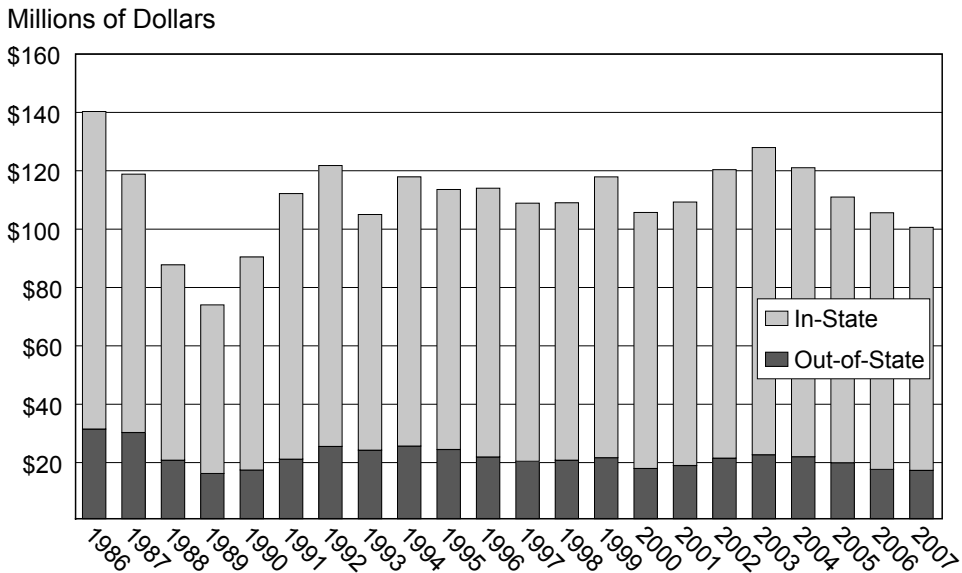
Note: Average Weekly Earnings = Average Annual Earnings (Table 1.10) divided by 52.

Source: Alaska Department of Labor and Workforce Development, Research and Analysis Section: Quarterly Census of Employment and Wages (QCEW) report to the U.S. Department of Labor

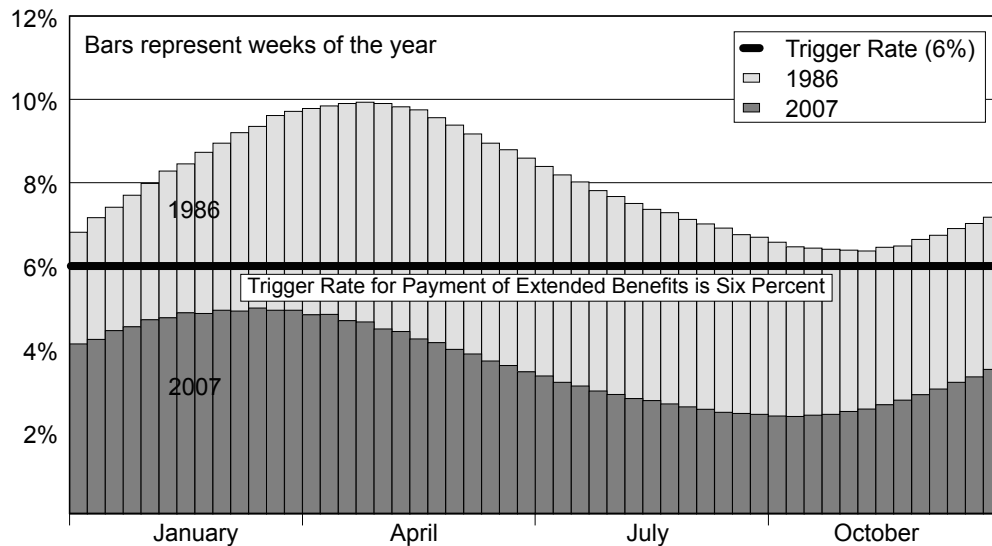
# Chapter 2

## Unemployment Insurance Benefit Payments

**Figure 2.1 Amount of UI Payments, Regular Benefits 1986-2007**



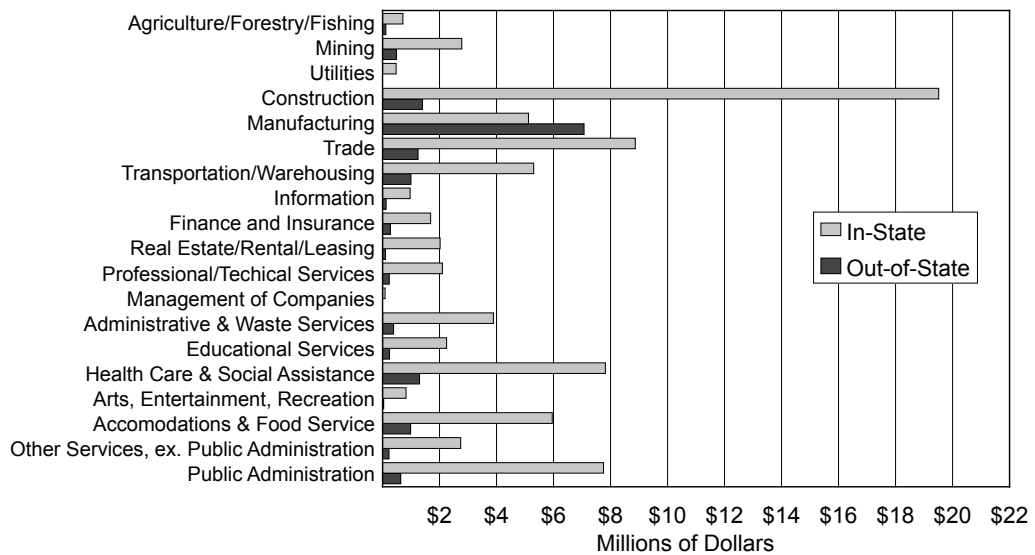
**Figure 2.2 Alaska Insured Unemployment Rate 1986 and 2007**



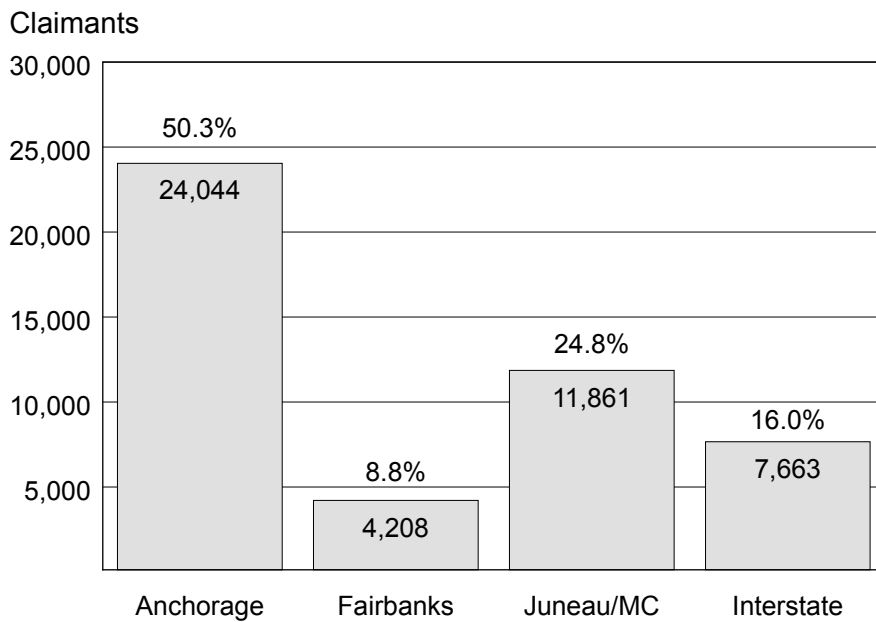
Source for Figures 2.1 and 2.2: Alaska Department of Labor and Workforce Development, Research and Analysis Section



**Figure 2.3 UI Regular Benefit Payments by Industry for In-State and Out-of-State Claimants, 2007**

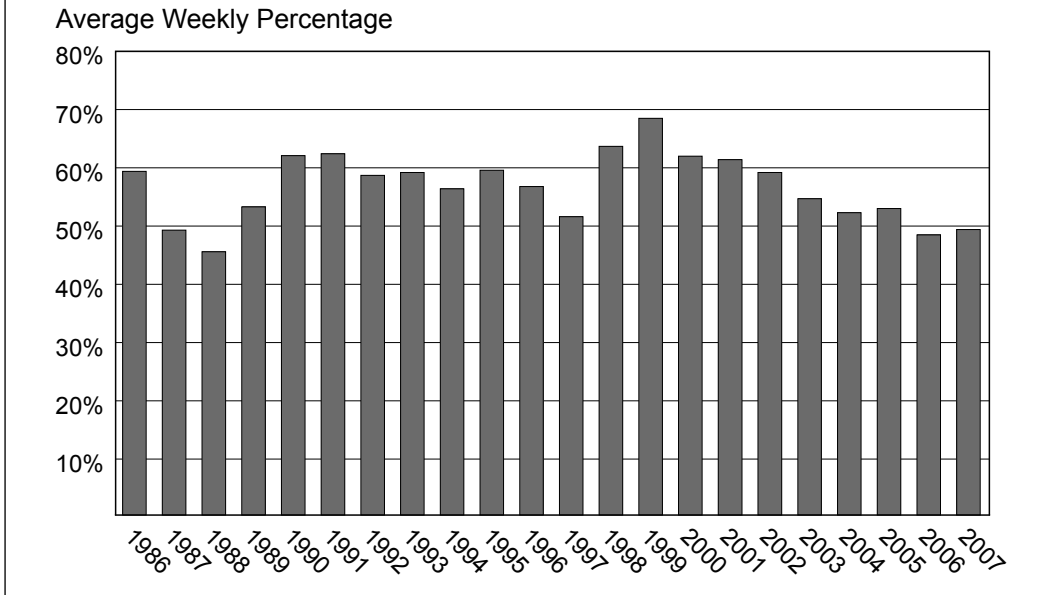


**Figure 2.4 Claimants by Processing Center in 2007**



Source for Figures 2.3 and 2.4: Alaska Department of Labor and Workforce Development, Research and Analysis Section

**Figure 2.5 Percentage of Unemployed Receiving UI in Alaska 1986-2007**



Source: Alaska Department of Labor and Workforce Development, Research and Analysis Section

**Table 2.1  
Unemployment, 1990-2007**

Year	Total Labor Force <sup>1</sup>	Total Unemployment <sup>1</sup>	Total Unemployment Rate (TUR) Percent <sup>1</sup>	Covered Employment	Insured Unemployment	Insured Unemployment Rate (IUR) Percent	Percent Ratio IUR to TUR
1990	270,040	19,014	7.0	214,644	11,170	5.2	73.9
1991	278,799	23,000	8.2	218,367	13,237	6.1	73.5
1992	288,777	25,797	8.9	221,795	13,880	6.3	70.1
1993	293,758	22,500	7.7	226,475	12,213	5.4	70.4
1994	300,742	22,544	7.5	223,455	13,554	6.1	80.9
1995	303,666	21,568	7.1	237,816	12,885	5.4	76.3
1996	308,573	23,021	7.5	239,746	13,120	5.5	73.4
1997	311,961	21,998	7.1	244,255	12,095	5.0	70.2
1998	313,079	19,140	6.1	250,251	12,140	4.9	80.3
1999	316,507	19,488	6.2	252,228	12,866	5.1	82.3
2000	319,002	19,678	6.2	258,428	12,290	4.8	77.4
2001	321,484	19,790	6.2	265,945	12,224	4.6	74.2
2002	328,385	23,273	7.1	271,349	13,980	5.2	73.2
2003	336,549	25,787	7.7	274,755	14,259	5.2	67.5
2004	340,976	25,172	7.4	279,161	13,471	4.8	64.9
2005	345,614	23,788	6.9	285,455	12,443	4.4	63.8
2006	350,936	22,950	6.5	290,310	11,649	4.0	61.5
2007	352,304	21,717	6.2	294,016	10,503	3.6	58.1

<sup>1</sup> Labor Force Data are current as of January 2008. Figures from 2000 to present are updated from a revision in the data series.

Note: The Total Unemployment Rate (TUR), and the Insured Unemployment Rate (IUR) are presented for comparison. The TUR is the "official" unemployment rate most often cited in the media. It is the percentage derived from when discussing rates of unemployment in the population. The TUR is the percentage derived from dividing total unemployment (both insured and uninsured) by the total labor force (both insured and uninsured). The IUR is the percentage derived by dividing the 13 week average of UI weeks claimed by the insured labor force.

Sources: Alaska Department of Labor and Workforce Development, Research and Analysis Section: Quarterly Census of Employment and Wages (QCEW) report to the U.S. Department of Labor; Report of Claims Activities, ETA 539 report to the U.S. Department of Labor; Local Area Unemployment Statistics (LAUS)

**Table 2.2**  
**Unemployment Insurance Claimant Characteristics**  
**2007**

Characteristics	Number	Percent of Total	Characteristics	Number	Percent of Total
Total	47,776	100.0	Occupation:		
Gender:			Agriculture, Forestry & Fishing	833	1.7
Male	29,192	61.1	Benchwork	199	0.4
Female	18,584	38.9	Clerical & Sales	7,310	15.3
Age:			Machine Trades	1,054	2.2
Less than 21	1,049	2.2	Processing	4,368	9.1
21-24	4,484	9.4	Professional, Technical, Managerial	5,677	11.9
25-34	12,169	25.5	Service	7,129	14.9
35-44	11,070	23.2	Structural Work	10,756	22.5
45-54	11,883	24.9	Miscellaneous & Unknown	10,450	21.9
55-64	5,880	12.3	Average Annual Earnings:		
65+	1,241	2.6	\$1,000-\$9,999	9,817	20.5
Number of Dependents:			\$10,000-\$19,999	12,710	26.6
0	29,187	61.1	\$20,000-\$29,999	9,905	20.7
1	7,760	16.2	\$30,000-\$39,999	5,962	12.5
2	6,006	12.6	\$40,000-\$49,999	3,499	7.3
3+	4,823	10.1	\$50,000-\$59,999	2,154	4.5
Ethnic Background:			\$60,000-\$69,999	1,442	3.0
Alaska Native/American Indian	12,241	25.6	\$70,000-\$79,999	849	1.8
Asian and Pacific Islander	4,169	8.7	\$80,000-\$89,999	562	1.2
Black	1,893	4.0	\$90,000+	863	1.8
Hispanic	1,949	4.1	Geographic Location:		
White	27,124	56.8	Aleutians East Borough	133	0.3
Other	400	0.8	Aleutians West Census Area	434	0.9
No Information	0	0.0	Anchorage Borough	12,349	25.8
Industry:			Bethel Census Area	1,721	3.6
Agriculture, Forestry, Fishing <sup>1</sup> & Hunting	453	0.9	Bristol Bay Borough	82	0.2
Mining	1,455	3.0	Denali Borough	241	0.5
Oil and Gas	17	0.0	Dillingham Census Area	317	0.7
Other Mining	1,438	3.0	Fairbanks North Star Borough	4,176	8.7
Utilities	239	0.5	Haines Borough	243	0.5
Construction	8,902	18.6	Juneau Borough	1,403	2.9
Manufacturing	6,192	13.0	Kenai Peninsula Borough	3,857	8.1
Food Products	5,578	11.7	Ketchikan Gateway Borough	890	1.9
Wood Products	110	0.2	Kodiak Island Borough	1,290	2.7
Other Manufacturing	504	1.1	Lake & Peninsula Borough	151	0.3
Trade	4,973	10.4	Matanuska-Susitna Borough	5,444	11.4
Transportation & Warehousing	2,981	6.2	Nome Census Area	820	1.7
Information	529	1.1	North Slope Borough	406	0.8
Finance and Insurance	848	1.8	Northwest Arctic Borough	576	1.2
Real Estate and Rental & Leasing	1,076	2.3	Prince of Wales-Outer Ketchikan Census Area	655	1.4
Professional & Technical Service	1,119	2.3	Sitka Borough	446	0.9
Management of Companies	106	0.2	Skagway-Hoonah-Angoon Census Area	471	1.0
Administrative & Waste Services	2,079	4.4	Southeast Fairbanks Census Area	560	1.2
Educational Services	1,147	2.4	Valdez-Cordova Census Area	861	1.8
Health Care & Social Assistance	3,860	8.1	Wade Hampton Census Area	1,051	2.2
Arts, Entertainment & Recreation	527	1.1	Wrangell-Petersburg Census Area	559	1.2
Accommodation & Food Services	4,118	8.6	Yakutat Borough	59	0.1
Other Services, except PA	1,434	3.0	Yukon-Koyukuk Census Area	804	1.7
Public Administration	4,688	9.8	Alaska Area Unknown	1	0.0
Unclassified/Unknown	1,025	2.1	Total In-State	39,999	83.7
			Out-of-State	7,777	16.3
			Local Office:		
			Anchorage	24,027	50.3
			Central - Interstate Claims	7,663	16.0
			Fairbanks	4,208	8.8
			Juneau (includes Rural Mail Claims)	11,878	24.9

<sup>1</sup> Fishing excludes nearly all commercial fish harvesting employment

Notes: Percentages may not add to 100 due to rounding.

Source: Alaska Department of Labor and Workforce Development, Research and Analysis Section: UI Claimant Characteristics Files



**Table 2.4**  
**Schedule of Weekly Benefits Duration**

Ratio of Base Period Earnings to High Quarter Earnings	Duration of Benefits (in Weeks)
Less than 1.50	16
1.50-1.99	18
2.00-2.49	20
2.50-2.99	22
3.00-3.49	24
3.50 or more	26

*Source: Alaska Statute 23.20.350(e)*

**Table 2.5**  
**Payment Data, UI Regular Benefits<sup>1</sup>**  
**1998-2007**

Year	All Claimants		Claimants Exhausting Benefits		Average Duration (in Weeks)			Average Weekly Benefit Amount (AWBA)		Maximum Weekly Benefit Amount (\$)	
	Number of First Payments	Number of Weeks Paid	Number <sup>3</sup>	Percent of First Payments	Potential	Actual	Actual for Exhausts <sup>2</sup>	Amount <sup>2</sup>	Ratio of WBA to Average Weekly Earnings	Benefits Without Dependents	Benefits With Dependents
1998	43,750	632,329	17,706	40.5	20.8	14.5	20.8	\$176.00	0.28	\$248.00	\$320.00
1999	45,635	679,381	19,252	42.2	20.9	14.9	20.8	181.58	0.28	248.00	320.00
2000	43,557	619,357	16,962	38.9	20.8	14.2	20.7	189.86	0.29	248.00	320.00
2001	44,017	626,241	17,256	39.2	20.8	14.2	20.7	192.99	0.28	248.00	320.00
2002	48,722	696,807	20,353	41.8	20.7	14.3	20.7	193.34	0.28	248.00	320.00
2003	49,493	729,399	21,728	43.9	20.7	14.7	20.7	193.04	0.27	248.00	320.00
2004	46,224	687,388	20,192	43.7	20.7	14.9	20.7	193.71	0.27	248.00	320.00
2005	43,944	630,355	17,847	40.6	20.7	14.3	20.6	193.91	0.26	248.00	320.00
2006	40,859	588,450	16,069	39.3	20.8	14.4	20.6	197.63	0.25	248.00	320.00
2007	38,422	551,470	15,015	39.1	20.9	14.4	20.7	200.09	0.24	248.00	320.00

<sup>1</sup> Taxable and reimbursable.

<sup>2</sup> Average weekly benefit amount for all claimants excluding certain part-time workers.

<sup>3</sup> Exhausts are people receiving payments for the maximum number of weeks available to them in a particular program.

Note: Dependents Benefit is \$24 per dependent, up to a maximum of three (total maximum \$72).

Sources: Alaska Department of Labor and Workforce Development, Research and Analysis Section: ETA 5-159 report to the U.S. Department of Labor; BEP 3565 P Quarterly Management Reports; ES-218 report to the U.S. Department of Labor

**Table 2.6**  
**Average Weekly Benefits as a Percentage of**  
**Average Weekly Earnings, 2007**

<b>State</b>	<b>Benefit Amount</b>	<b>Rank</b>	<b>Weekly Earnings</b>	<b>Rank</b>	<b>Average Weekly Benefit Amount as Percentage of Earnings</b>	<b>Rank</b>
Alabama	\$187.64	50	\$701.58	35	26.7	46
<b>Alaska</b>	200.09	49	818.04	19	24.5	49
Arizona	202.09	48	782.79	21	25.8	48
Arkansas	257.42	33	644.19	45	40.0	11
California	298.23	12	960.27	6	31.1	38
Colorado	326.57	7	875.34	10	37.3	23
Connecticut	309.98	9	1,160.96	3	26.7	47
Delaware	255.83	35	912.35	8	28.0	44
Dist. of Columbia	286.20	21	1,376.58	1	20.8	51
Florida	237.41	40	748.45	26	31.7	36
Georgia	262.74	32	819.06	18	32.1	35
Hawaii	384.00	1	712.70	33	53.9	1
Idaho	254.97	36	637.83	46	40.0	10
Illinois	305.47	10	929.90	7	32.8	33
Indiana	290.24	17	725.70	31	40.0	9
Iowa	292.55	16	680.09	39	43.0	3
Kansas	302.08	11	707.01	34	42.7	4
Kentucky	284.14	24	694.50	37	40.9	8
Louisiana	204.21	47	736.81	30	27.7	45
Maine	254.10	37	646.03	44	39.3	13
Maryland	282.22	25	893.21	9	31.6	37
Massachusetts	378.60	2	1,084.89	4	34.9	30
Michigan	293.07	15	838.85	16	34.9	29
Minnesota	341.31	5	859.69	13	39.7	12
Mississippi	176.72	51	604.15	49	29.3	43
Missouri	224.81	45	743.87	28	30.2	41
Montana	227.79	43	597.48	50	38.1	18
Nebraska	234.29	41	664.99	43	35.2	28
Nevada	284.27	23	790.84	20	35.9	27
New Hampshire	263.65	31	852.01	15	30.9	39
New Jersey	358.90	4	1,037.36	5	34.6	31
New Mexico	256.10	34	669.26	41	38.3	17
New York	294.54	13	1,237.60	2	23.8	50
North Carolina	276.35	27	739.49	29	37.4	22
North Dakota	267.71	28	630.51	47	42.5	5
Ohio	289.95	18	761.05	23	38.1	20
Oklahoma	250.59	38	671.73	40	37.3	24
Oregon	285.62	22	751.13	24	38.0	21
Pennsylvania	322.93	8	829.08	17	39.0	16
Rhode Island	358.99	3	762.78	22	47.1	2
South Carolina	229.69	42	666.12	42	34.5	32
South Dakota	227.25	44	581.60	51	39.1	14
Tennessee	221.69	46	747.26	27	29.7	42
Texas	286.83	20	874.52	12	32.8	34
Utah	294.07	14	700.94	36	42.0	6
Vermont	287.10	19	693.14	38	41.4	7
Virginia	267.25	29	874.86	11	30.5	40
Washington	334.58	6	856.81	14	39.0	15
West Virginia	239.85	39	629.20	48	38.1	19
Wisconsin	267.08	30	717.20	32	37.2	25
Wyoming	278.28	26	748.97	25	37.2	26
<b>United States<sup>1</sup></b>	<b>287.73</b>		<b>850.81</b>		<b>33.8</b>	

<sup>1</sup> Covered employment.

Notes: Benefit Amount is Regular Benefits only. Weekly Earnings is for Total Covered Employment. U.S. data include Puerto Rico and the Virgin Islands.

Sources: Alaska Department of Labor and Workforce Development, Research and Analysis Section: ETA 5-159 report, and ES-202 Report, U.S. Department of Labor.

**Table 2.7**  
**Payment Data, UI Extended Benefits, 1998-2007**

<b>Year</b>	<b>Number of First Payments</b>	<b>Number of Weeks Paid</b>	<b>Number of Claimants Exhausting Benefits</b>	<b>Average Duration in Weeks</b>	<b>Average Weekly Benefit Amount<sup>1</sup></b>
1998	5,973	31,666	1,293	5.3	\$171.60
1999	7,160	41,123	1,970	5.7	168.77
2000	5,368	28,266	1,084	5.3	182.33
2001	5,137	27,065	1,066	5.3	182.24
2002	10,950	59,234	1,757	5.4	255.32
2003	14,527	111,012	8,262	7.6	188.10
2004	7,162	48,341	3,131	6.7	187.26
2005	5,829	30,449	1,199	5.2	181.06
2006	1	4	0	4.0	254.00
2007	0	0	0	0.0	0.00

<sup>1</sup> Excludes certain part-time workers.

Source: Alaska Department of Labor and Workforce Development, Research and Analysis Section: Claims and Payment Activities, ETA 5-159 report to the U.S. Department of Labor

**Table 2.8**  
**Payment Data, UI State Supplemental Benefits, 1998-2007**

<b>Year</b>	<b>Number of First Payments</b>	<b>Number of Weeks Paid</b>	<b>Number of Claimants Exhausting Benefits</b>	<b>Average Duration in Weeks</b>	<b>Average Weekly Benefit Amount<sup>1</sup></b>
1998	212	1,212	91	5.7	\$97.43
1999	250	1,470	128	5.9	92.68
2000	226	1,218	82	5.4	92.68
2001	193	1,096	90	5.7	102.92
2002	307	1,755	139	5.7	102.94
2003	476	3,398	385	7.1	98.47
2004	211	1,347	114	6.4	99.62
2005	193	1,062	73	5.5	101.79
2006	0	0	0	0.0	0.00
2007	0	0	0	0.0	0.00

<sup>1</sup> Excludes certain part-time workers.

Source: Alaska Department of Labor and Workforce Development, Research and Analysis Section: Claims and Payment Activities, ETA 5-159 report to the U.S. Department of Labor

**Table 2.9**  
**UI Regular Benefit Payments<sup>1</sup> by Industry**  
**Intrastate, 2004-2007**

Industry	Number of Weeks Paid				Number of First Payments			
	2004	2005	2006	2007	2004	2005	2006	2007
Totals (including unclassified)	582,618	537,906	506,046	470,669	39,300	37,741	35,149	32,791
Agriculture, Forestry, Fishing <sup>2</sup> & Hunting	6,642	4,600	4,880	4,187	465	368	364	281
Mining	17,617	13,035	10,778	13,037	1,175	979	887	1,018
Utilities	3,189	2,913	2,905	2,955	207	199	179	207
Construction	101,056	95,095	95,483	92,647	7,132	7,030	6,963	6,608
Manufacturing	46,599	41,401	39,255	34,539	3,068	2,918	2,723	2,437
Wholesale Trade	8,202	6,912	7,259	6,422	565	468	510	452
Retail Trade	60,209	56,069	52,099	47,994	4,099	3,854	3,499	3,179
Transportation & Warehousing	39,646	36,484	32,926	30,428	2,793	2,637	2,386	2,189
Information	7,477	6,466	6,243	5,081	477	455	422	371
Finance & Insurance	13,059	11,095	10,433	9,270	799	751	678	615
Real Estate, Rental & Leasing	14,470	15,148	15,939	12,540	935	1,045	1,009	832
Professional & Technical Services	14,593	11,784	11,794	10,781	885	857	826	843
Management of Companies	749	897	1,017	1,164	55	55	68	82
Administrative & Waste Services	26,601	23,077	23,425	23,397	1,749	1,691	1,662	1,731
Educational Services	19,008	15,521	15,706	14,075	1,268	1,033	1,125	954
Health Care & Social Assistance	49,367	49,234	43,792	42,007	3,176	3,243	2,786	2,678
Arts, Entertainment & Recreation	7,037	7,067	7,086	6,270	488	486	469	426
Accommodation & Food Services	54,729	52,104	47,096	43,082	3,805	3,768	3,336	3,066
Other Services, except Public Administration	26,947	24,094	18,788	15,982	1,831	1,703	1,271	1,115
Public Administration	63,342	62,649	54,142	49,228	4,128	4,013	3,511	3,271
Unclassified	2,079	2,261	5,000	5,583	200	188	475	436

Industry	Amount of Payments				Percent Distribution Amount of Payments			
	2004	2005	2006	2007	2004	2005	2006	2007
Totals	\$99,056,646	\$91,035,367	\$87,916,562	\$83,227,038	100.0	100.0	100.0	100.00
Agriculture, Forestry, Fishing <sup>2</sup> & Hunting	1,214,825	824,071	882,817	788,946	1.2	0.9	1.0	0.95
Mining	3,802,977	2,802,069	2,296,933	2,853,692	3.8	3.1	2.6	3.43
Utilities	630,233	517,428	550,791	551,792	0.6	0.6	0.6	0.66
Construction	20,696,071	19,494,222	19,931,365	19,589,048	20.9	21.4	22.7	23.54
Manufacturing	6,810,922	5,959,677	5,949,165	5,192,300	6.9	6.5	6.8	6.24
Wholesale Trade	1,495,196	1,236,632	1,337,053	1,220,032	1.5	1.4	1.5	1.47
Retail Trade	9,273,160	8,628,490	8,230,738	7,722,039	9.4	9.5	9.4	9.28
Transportation & Warehousing	6,703,267	6,336,147	5,725,196	5,380,511	6.8	7.0	6.5	6.46
Information	1,487,163	1,238,415	1,259,968	1,039,369	1.5	1.4	1.4	1.25
Finance & Insurance	2,334,253	1,989,070	1,979,007	1,763,855	2.4	2.2	2.3	2.12
Real Estate, Rental & Leasing	2,381,189	2,468,307	2,732,328	2,096,196	2.4	2.7	3.1	2.52
Professional & Technical Services	2,782,352	2,202,895	2,279,027	2,172,134	2.8	2.4	2.6	2.61
Management of Companies	139,090	153,163	161,144	165,563	0.1	0.2	0.2	0.2
Administrative & Waste Services	4,344,559	3,761,694	3,888,897	3,965,193	4.4	4.1	4.4	4.76
Educational Services	2,980,239	2,353,363	2,488,230	2,321,605	3.0	2.6	2.8	2.79
Health Care & Social Assistance	8,839,670	8,880,715	8,109,385	7,895,993	8.9	9.8	9.2	9.49
Arts, Entertainment & Recreation	990,092	971,994	1,030,674	898,026	1.0	1.1	1.2	1.08
Accommodation & Food Services	7,349,217	7,001,727	6,464,627	6,026,108	7.4	7.7	7.4	7.24
Other Services, except Public Administration	4,443,542	3,957,628	3,258,502	2,812,899	4.5	4.3	3.7	3.38
Public Administration	10,038,300	9,896,360	8,558,505	7,829,330	10.1	10.9	9.7	9.41
Unclassified	320,329	361,300	802,210	942,407	0.3	0.4	0.9	1.13

<sup>1</sup> Taxable and reimbursable

<sup>2</sup> Fishing excludes nearly all commercial fish harvesting employment

Note: Percentages may not add to 100 percent due to rounding.

Source: Alaska Department of Labor and Workforce Development, Research and Analysis Section: UC-217 report, Benefit Payments by Industry and Area



**Table 2.9 (continued)**  
**UI Regular Benefit Payments<sup>1</sup> by Industry**  
**Intrastate, 2004-2007**

Industry	Average Weekly Payments				Average Duration in Weeks			
	2004	2005	2006	2007	2004	2005	2006	2007
Totals	170.02	169.24	173.73	176.83	14.8	14.3	14.4	14.35
Agriculture, Forestry, Fishing <sup>2</sup> & Hunting	182.90	179.15	180.91	188.43	14.3	12.5	13.4	14.90
Mining	215.87	214.97	213.11	218.89	15.0	13.3	12.2	12.81
Utilities	197.63	177.63	189.60	186.73	15.4	14.6	16.2	14.28
Construction	204.80	205.00	208.74	211.44	14.2	13.5	13.7	14.02
Manufacturing	146.16	143.95	151.55	150.33	15.2	14.2	14.4	14.17
Wholesale Trade	182.30	178.91	184.19	189.98	14.5	14.8	14.2	14.21
Retail Trade	154.02	153.89	157.98	160.90	14.7	14.5	14.9	15.10
Transportation & Warehousing	169.08	173.67	173.88	176.83	14.2	13.8	13.8	13.90
Information	198.90	191.53	201.82	204.56	15.7	14.2	14.8	13.70
Finance & Insurance	178.75	179.28	189.69	190.28	16.3	14.8	15.4	15.07
Real Estate, Rental & Leasing	164.56	162.95	171.42	167.16	15.5	14.5	15.8	15.07
Professional & Technical Services	190.66	186.94	193.24	201.48	16.5	13.8	14.3	12.79
Management of Companies	185.70	170.75	158.45	142.24	13.6	16.3	15.0	14.20
Administrative & Waste Services	163.32	163.01	166.01	169.47	15.2	13.6	14.1	13.52
Educational Services	156.79	151.62	158.43	164.95	15.0	15.0	14.0	14.75
Health Care & Social Assistance	179.06	180.38	185.18	187.97	15.5	15.2	15.7	15.69
Arts, Entertainment & Recreation	140.70	137.54	145.45	143.23	14.4	14.5	15.1	14.72
Accommodation & Food Services	134.28	134.38	137.26	139.88	14.4	13.8	14.1	14.05
Other Services, except Public Administration	164.90	164.26	173.44	176.00	14.7	14.1	14.8	14.33
Public Administration	158.48	157.97	158.08	159.04	15.3	15.6	15.4	15.05
Unclassified	154.08	159.80	160.44	168.80	10.4	12.0	10.5	12.81

<sup>1</sup> Taxable and reimbursable

<sup>2</sup> Fishing excludes nearly all commercial fish harvesting employment

Note: Percentages may not add to 100 percent due to rounding.

Source: Alaska Department of Labor and Workforce Development, Research and Analysis Section: UC-217 report, Benefit Payments by Industry and Area

**Table 2.10**  
**UI Regular Benefit Payments<sup>1</sup> by Industry**  
**Interstate, 2004-2007**

Industry	Number of Weeks Paid				Number of First Payments			
	2004	2005	2006	2007	2004	2005	2006	2007
Totals (including unclassified)	117,002	105,712	92,126	88,791	6,904	6,219	5,700	5,618
Agriculture, Forestry, Fishing <sup>2</sup> & Hunting	2,255	1,492	1,058	936	139	90	73	65
Mining	3,166	2,160	1,461	2,365	189	117	94	174
Utilities	304	374	355	228	20	20	18	13
Construction	7,917	7,134	6,381	6,535	483	450	390	396
Manufacturing	44,856	42,789	40,000	37,874	2,822	2,789	2,664	2,548
Wholesale Trade	1,420	1,344	1,208	1,149	87	68	74	56
Retail Trade	8,085	7,012	5,600	5,895	474	385	296	340
Transportation & Warehousing	7,173	6,227	5,624	5,377	419	340	361	327
Information	1,649	1,087	1,049	914	88	53	50	42
Finance & Insurance	2,385	2,097	1,532	1,551	122	111	89	78
Real Estate, Rental & Leasing	1,001	956	843	865	47	58	41	54
Professional & Technical Services	2,772	2,111	1,959	1,422	150	123	111	109
Management of Companies	64	95	34	11	3	6	1	1
Administrative & Waste Services	3,518	3,737	3,112	2,394	193	207	178	162
Educational Services	3,194	2,275	2,071	1,660	161	115	114	85
Health Care & Social Assistance	7,823	7,461	6,162	6,335	411	360	332	347
Arts, Entertainment & Recreation	828	731	646	701	60	42	48	46
Accommodation & Food Services	8,833	7,871	6,851	6,499	496	455	409	402
Other Services, except Public Administration	3,665	3,083	1,660	1,495	199	164	94	88
Public Administration	5,518	5,281	3,719	3,422	307	242	210	198
Unclassified	576	395	801	1,163	34	24	53	87

Industry	Amount of Payments				Percent Distribution Amount of Payments			
	2004	2005	2006	2007	2004	2005	2006	2007
Totals	\$22,008,741	\$19,955,610	\$17,699,605	\$17,359,546	100.0	100.0	100.0	100
Agriculture, Forestry, Fishing <sup>2</sup> & Hunting	466,228	307,931	217,912	189,954	2.1	1.5	1.2	1.09
Mining	753,920	507,456	346,640	560,353	3.4	2.5	2.0	3.23
Utilities	68,371	82,506	78,615	50,353	0.3	0.4	0.4	0.29
Construction	1,761,363	1,578,005	1,432,660	1,473,778	8.0	7.9	8.1	8.49
Manufacturing	7,979,868	7,735,359	7,388,206	7,141,617	36.3	38.8	41.7	41.14
Wholesale Trade	271,940	275,991	253,351	236,365	1.2	1.4	1.4	1.36
Retail Trade	1,393,347	1,252,286	1,021,301	1,084,831	6.3	6.3	5.8	6.25
Transportation & Warehousing	1,383,181	1,189,930	1,111,470	1,068,955	6.3	6.0	6.3	6.16
Information	353,212	235,469	232,444	201,460	1.6	1.2	1.3	1.16
Finance & Insurance	497,684	435,707	349,275	347,166	2.3	2.2	2.0	2
Real Estate, Rental & Leasing	189,654	168,195	155,567	177,689	0.9	0.8	0.9	1.02
Professional & Technical Services	600,786	437,097	404,436	308,077	2.7	2.2	2.3	1.77
Management of Companies	16,174	19,419	6,907	1,655	0.1	0.1	0.0	0.01
Administrative & Waste Services	658,317	719,381	619,836	462,993	3.0	3.6	3.5	2.67
Educational Services	626,217	435,595	414,140	320,073	2.8	2.2	2.3	1.84
Health Care & Social Assistance	1,637,725	1,557,341	1,306,811	1,372,649	7.4	7.8	7.4	7.91
Arts, Entertainment & Recreation	136,313	112,160	93,253	115,927	0.6	0.6	0.5	0.67
Accommodation & Food Services	1,352,316	1,195,486	1,074,466	1,060,588	6.1	6.0	6.1	6.11
Other Services, except Public Administration	625,111	533,369	292,205	300,900	2.8	2.7	1.7	1.73
Public Administration	1,138,113	1,107,423	769,699	711,902	5.2	5.5	4.3	4.1
Unclassified	98,901	69,504	130,411	172,261	0.4	0.3	0.7	0.99

<sup>1</sup> Payment data includes taxable and reimbursable

<sup>2</sup> Fishing excludes nearly all commercial fish harvesting employment

Note: Percentages may not add to 100 percent due to rounding.

Source: Alaska Department of Labor and Workforce Development, Research and Analysis Section: UC-217 report, Benefit Payments by Industry and Area

**Table 2.10 (continued)**  
**UI Regular Benefit Payments<sup>1</sup> by Industry**  
**Interstate, 2004-2007**

Industry	Average Weekly Payments				Average Duration in Weeks			
	2004	2005	2006	2007	2004	2005	2006	2007
Totals	\$188.11	\$188.77	\$192.12	\$195.51	16.9	17.0	16.2	15.8
Agriculture, Forestry, Fishing <sup>2</sup> & Hunting	206.75	206.39	205.97	202.94	16.2	16.6	14.5	14.4
Mining	238.13	234.93	237.26	236.94	16.8	18.5	15.5	13.6
Utilities	224.90	220.60	221.45	220.85	15.2	18.7	19.7	17.5
Construction	222.48	221.19	224.52	225.52	16.4	15.9	16.4	16.5
Manufacturing	177.90	180.78	184.71	188.56	15.9	15.3	15.0	14.9
Wholesale Trade	191.51	205.35	209.73	205.71	16.3	19.8	16.3	20.5
Retail Trade	172.34	178.59	182.38	184.03	17.1	18.2	18.9	17.3
Transportation & Warehousing	192.83	191.09	197.63	198.80	17.1	18.3	15.6	16.4
Information	214.20	216.62	221.59	220.42	18.7	20.5	21.0	21.8
Finance & Insurance	208.67	207.78	227.99	223.83	19.5	18.9	17.2	19.9
Real Estate, Rental & Leasing	189.46	175.94	184.54	205.42	21.3	16.5	20.6	16.0
Professional & Technical Services	216.73	207.06	206.45	216.65	18.5	17.2	17.6	13.0
Management of Companies	252.72	204.41	203.15	150.45	21.3	15.8	34.0	11.0
Administrative & Waste Services	187.13	192.50	199.18	193.40	18.2	18.1	17.5	14.8
Educational Services	196.06	191.47	199.97	192.82	19.8	19.8	18.2	19.5
Health Care & Social Assistance	209.35	208.73	212.08	216.68	19.0	20.7	18.6	18.3
Arts, Entertainment & Recreation	164.63	153.43	144.35	165.37	13.8	17.4	13.5	15.2
Accommodation & Food Services	153.10	151.88	156.83	163.19	17.8	17.3	16.8	16.2
Other Services, except Public Administration	170.56	173.00	176.03	201.27	18.4	18.8	17.7	17.0
Public Administration	206.25	209.70	206.96	208.04	18.0	21.8	17.7	17.3
Unclassified	171.70	175.96	162.81	148.12	16.9	16.5	15.1	13.4

<sup>1</sup> Payment data includes taxable and reimbursable

<sup>2</sup> Fishing excludes nearly all commercial fish harvesting employment

Note: Percentages may not add to 100 percent due to rounding.

Source: Alaska Department of Labor and Workforce Development, Research and Analysis Section: UC-217 report, Benefit Payments by Industry and Area

**Table 2.11**  
**UI Regular Benefit Payments<sup>1</sup> by Industry**  
**Intrastate and Interstate Total, 2004-2007**

Industry	Number of Weeks Paid				Number of First Payments			
	2004	2005	2006	2007	2004	2005	2006	2007
Totals (including unclassified)	699,620	643,618	598,172	559,460	46,204	43,960	40,849	38,409
Agriculture, Forestry, Fishing <sup>2</sup> & Hunting	8,897	6,092	5,938	5,123	604	458	437	346
Mining	20,783	15,195	12,239	15,402	1,364	1,096	981	1,192
Utilities	3,493	3,287	3,260	3,183	227	219	197	220
Construction	108,973	102,229	101,864	99,182	7,615	7,480	7,353	7,004
Manufacturing	91,455	84,190	79,255	72,413	5,890	5,707	5,387	4,985
Wholesale Trade	9,622	8,256	8,467	7,571	652	536	584	508
Retail Trade	68,294	63,081	57,699	53,889	4,573	4,239	3,795	3,519
Transportation & Warehousing	46,819	42,711	38,550	35,805	3,212	2,977	2,747	2,516
Information	9,126	7,553	7,292	5,995	565	508	472	413
Finance & Insurance	15,444	13,192	11,965	10,821	921	862	767	693
Real Estate, Rental & Leasing	15,471	16,104	16,782	13,405	982	1,103	1,050	886
Professional & Technical Services	17,365	13,895	13,753	12,203	1,035	980	937	952
Management of Companies	813	992	1,051	1,175	58	61	69	83
Administrative & Waste Services	30,119	26,814	26,537	25,791	1,942	1,898	1,840	1,893
Educational Services	22,202	17,796	17,777	15,735	1,429	1,148	1,239	1,039
Health Care & Social Assistance	57,190	56,695	49,954	48,342	3,587	3,603	3,118	3,025
Arts, Entertainment & Recreation	7,865	7,798	7,732	6,971	548	528	517	472
Accommodation & Food Services	63,562	59,975	53,947	49,581	4,301	4,223	3,745	3,468
Other Services, except Public Administration	30,612	27,177	20,448	17,477	2,030	1,867	1,365	1,203
Public Administration	68,860	67,930	57,861	52,650	4,435	4,255	3,721	3,469
Unclassified	2,655	2,656	5,801	6,746	234	212	528	523

Industry	Amount of Payments				Percent Distribution Amount of Payments			
	2004	2005	2006	2007	2004	2005	2006	2007
Totals	\$121,065,387	\$110,990,977	\$105,616,167	\$100,586,584	100.0	100.0	100.0	100.0
Agriculture, Forestry, Fishing <sup>2</sup> & Hunting	1,681,053	1,132,002	1,100,729	978,900	1.3	1.0	1.1	1.0
Mining	4,556,897	3,309,525	2,643,573	3,414,045	5.8	3.0	2.4	0.3
Utilities	698,604	599,934	629,406	602,145	0.6	0.5	0.5	0.6
Construction	22,457,434	21,072,227	21,364,025	21,062,826	17.5	19.0	18.0	20.9
Manufacturing	14,790,790	13,695,036	13,337,371	12,333,917	10.9	12.3	13.2	12.3
Wholesale Trade	1,767,136	1,512,623	1,590,404	1,456,397	1.8	1.4	1.4	1.4
Retail Trade	10,666,507	9,880,776	9,252,039	8,806,870	9.5	8.9	9.3	8.8
Transportation & Warehousing	8,086,448	7,526,077	6,836,666	6,449,466	6.9	6.8	6.7	6.4
Information	1,840,375	1,473,884	1,492,412	1,240,829	1.4	1.3	1.2	1.2
Finance & Insurance	2,831,937	2,424,777	2,328,282	2,111,021	2.3	2.2	1.9	2.1
Real Estate, Rental & Leasing	2,570,843	2,636,502	2,887,895	2,273,885	2.1	2.4	2.6	2.3
Professional & Technical Services	3,383,138	2,639,992	2,683,463	2,480,211	2.8	2.4	2.3	2.5
Management of Companies	155,264	172,582	168,051	167,218	0.1	0.2	0.2	0.2
Administrative & Waste Services	5,002,876	4,481,075	4,508,733	4,428,186	4.2	4.0	4.5	4.4
Educational Services	3,606,456	2,788,958	2,902,370	2,641,678	2.9	2.5	3.0	2.6
Health Care & Social Assistance	10,477,395	10,438,056	9,416,196	9,268,642	7.4	9.4	7.6	9
Arts, Entertainment & Recreation	1,126,405	1,084,154	1,123,927	1,013,953	0.9	1.0	1.3	1
Accommodation & Food Services	8,701,533	8,197,213	7,539,093	7,086,696	7.4	7.4	9.2	7
Other Services, except Public Administration	5,068,653	4,490,997	3,550,707	3,113,799	3.6	4.0	3.3	3
Public Administration	11,176,413	11,003,783	9,328,204	8,541,232	9.3	9.9	9.1	8
Unclassified	419,230	430,804	932,621	1,114,668	1.1	0.4	1.3	1

<sup>1</sup> Data includes both taxable and reimbursable

<sup>2</sup> Fishing excludes nearly all commercial fish harvesting employment

Note: Percentages may not add to 100 percent due to rounding.

Source: Alaska Department of Labor and Workforce Development, Research and Analysis Section: UC-217 report, Benefit Payments by Industry and Area

**Table 2.11 (continued)**  
**UI Regular Benefit Payments<sup>1</sup> by Industry**  
**Intrastate and Interstate Total, 2004-2007**

Industry	Average Weekly Payments				Average Duration in Weeks			
	2004	2005	2006	2007	2004	2005	2006	2007
Totals	182.90	172.45	176.56	179.79	15.1	14.6	14.6	14.6
Agriculture, Forestry, Fishing <sup>2</sup> & Hunting	193.79	185.82	185.37	191.08	14.7	13.3	13.6	14.8
Mining	358.03	217.80	216.00	221.66	15.2	13.9	12.5	12.9
Utilities	204.59	182.52	193.07	189.18	15.4	15.0	16.5	14.5
Construction	205.11	206.13	209.73	212.37	14.3	13.7	13.9	14.2
Manufacturing	153.08	162.67	168.28	170.33	15.5	14.8	14.7	14.5
Wholesale Trade	233.49	183.21	187.84	192.37	14.8	15.4	14.5	14.9
Retail Trade	178.92	156.64	160.35	163.43	14.9	14.9	15.2	15.3
Transportation & Warehousing	188.79	176.21	177.35	180.13	14.6	14.3	14.0	14.2
Information	201.86	195.14	204.66	206.98	16.2	14.9	15.4	14.5
Finance & Insurance	192.23	183.81	194.59	195.09	16.8	15.3	15.6	15.6
Real Estate, Rental & Leasing	173.84	163.72	172.08	169.63	15.8	14.6	16.0	15.1
Professional & Technical Services	206.05	190.00	195.12	203.25	16.8	14.2	14.7	12.8
Management of Companies	95.21	173.97	159.90	142.31	14.0	16.3	15.2	14.2
Administrative & Waste Services	178.29	167.12	169.90	171.70	15.5	14.1	14.4	13.6
Educational Services	168.23	156.72	163.27	167.89	15.5	15.5	14.3	15.1
Health Care & Social Assistance	166.68	184.11	188.50	191.73	15.9	15.7	16.0	16.0
Arts, Entertainment & Recreation	151.32	139.03	145.36	145.45	14.4	14.8	15.0	14.8
Accommodation & Food Services	149.71	136.68	139.75	142.93	14.8	14.2	14.4	14.3
Other Services, except Public Administration	151.02	165.25	173.65	178.17	15.1	14.6	15.0	14.5
Public Administration	172.10	161.99	161.22	162.23	15.5	16.0	15.5	15.2
Unclassified	546.86	162.20	160.77	165.23	11.3	12.5	11.0	12.9

<sup>1</sup> Data includes both taxable and reimbursable

<sup>2</sup> Fishing excludes nearly all commercial fish harvesting employment

Note: Percentages may not add to 100 percent due to rounding.

Source: Alaska Department of Labor and Workforce Development, Research and Analysis Section: UC-217 report, Benefit Payments by Industry and Area

**Table 2.12**  
**UI Regular Benefits Payments<sup>1</sup> by Industry**  
**Interstate as a Percentage of Total, 2004-2007**

INDUSTRY	Percentage of Weeks Paid to Interstate				Percentage of First Payments to Interstate				Percentage of Payments to Interstate			
	2004	2005	2006	2007	2004	2005	2006	2007	2004	2005	2006	2007
Totals	16.7	16.4	15.4	15.9	14.9	14.1	14.0	14.6	18.2	18.0	16.8	17.3
Agriculture, Forestry, Fishing <sup>2</sup> & Hunting	25.3	24.5	17.8	18.3	23.0	19.7	16.7	18.8	27.7	27.2	19.8	19.4
Mining	15.2	14.2	11.9	15.4	13.9	10.7	9.6	14.6	16.5	15.3	13.1	16.4
Utilities	8.7	11.4	10.9	7.2	8.8	9.1	9.1	5.9	9.8	13.8	12.5	8.4
Construction	7.3	7.0	6.3	6.6	6.3	6.0	5.3	5.7	7.8	7.5	6.7	7.0
Manufacturing	49.0	50.8	50.5	52.3	47.9	48.9	49.5	51.1	54.0	56.5	55.4	57.9
Wholesale Trade	14.8	16.3	14.3	15.2	13.3	12.7	12.7	11.0	15.4	18.2	15.9	16.2
Retail Trade	11.8	11.1	9.7	10.9	10.4	9.1	7.8	9.7	13.1	12.7	11.0	12.3
Transportation & Warehousing	15.3	14.6	14.6	15.0	13.0	11.4	13.1	13.0	17.1	15.8	16.3	16.6
Information	18.1	14.4	14.4	15.2	15.6	10.4	10.6	10.2	19.2	16.0	15.6	16.2
Finance & Insurance	15.4	15.9	12.8	14.3	13.2	12.9	11.6	11.3	17.6	18.0	15.0	16.4
Real Estate, Rental & Leasing	6.5	5.9	5.0	6.5	4.8	5.3	3.9	6.1	7.4	6.4	5.4	7.8
Professional & Technical Services	16.0	15.2	14.2	11.7	14.5	12.6	11.8	11.4	17.8	16.6	15.1	12.4
Management of Companies	7.9	9.6	3.2	0.9	5.2	9.8	1.4	1.2	10.4	11.3	4.1	1.0
Administrative & Waste Services	11.7	13.9	11.7	9.3	9.9	10.9	9.7	8.6	13.2	16.1	13.7	10.5
Educational Services	14.4	12.8	11.6	10.5	11.3	10.0	9.2	8.2	17.4	15.6	14.3	12.1
Health Care & Social Assistance	13.7	13.2	12.3	13.1	11.5	10.0	10.6	11.5	15.6	14.9	13.9	14.8
Arts, Entertainment & Recreation	10.5	9.4	8.4	10.1	10.9	8.0	9.3	9.7	12.1	10.3	8.3	11.4
Accommodation & Food Services	13.9	13.1	12.7	13.1	11.5	10.8	10.9	11.6	15.5	14.6	14.3	15.0
Other Services, except Public Administration	12.0	11.3	8.1	8.6	9.8	8.8	6.9	7.3	12.3	11.9	8.2	9.7
Public Administration	8.0	7.8	6.4	6.5	6.9	5.7	5.6	5.7	10.2	10.1	8.3	8.3
Unclassified	21.7	14.9	13.8	17.2	14.5	11.3	10.0	16.6	23.6	16.1	14.0	15.5

<sup>1</sup> Data includes both taxable and reimbursable

<sup>2</sup> Fishing excludes nearly all commercial fish harvesting employment

Note: Percentages may not add up to 100 percent due to rounding.

Source: Alaska Department of Labor and Workforce Development, Research and Analysis Section: UC-217 report, Benefit Payments by Industry and Area

**Table 2.13**  
**Amount of UI Benefit Payments by Census Area, 2007**

Census Areas	State UI <sup>1</sup> Regular	State UI <sup>1</sup> EB	UCFE Regular	UCFE EB	UCX Regular	UCX EB	TEUC	SSB	All Programs Total
Aleutians East Borough	\$260,169	\$0	\$0	\$0	\$0	\$0	\$0	\$0	\$260,169
Aleutians West CA	785,576	0	3,568	0	0	0	0	0	789,144
Anchorage, Municipality of	26,079,341	0	295,387	0	319,978	0	0	0	26,694,706
Bethel CA	3,236,723	0	18,837	0	14,589	0	0	0	3,270,149
Bristol Bay Borough	172,520	0	5,133	0	0	0	0	0	177,653
Denali Borough	429,600	0	105,677	0	0	0	0	0	535,277
Dillingham CA	601,463	0	15,248	0	3,471	0	0	0	620,182
Fairbanks North Star Borough	8,831,419	0	212,149	0	124,686	0	0	0	9,168,254
Haines Borough	454,092	0	2,678	0	0	0	0	0	456,770
Juneau Borough	2,682,944	0	44,325	0	14,480	0	0	0	2,741,749
Kenai Peninsula Borough	8,022,948	0	106,105	0	21,422	0	0	0	8,150,475
Ketchikan Gateway Borough	1,643,570	0	19,210	0	6,448	0	0	0	1,669,228
Kodiak Island Borough	2,178,186	0	5,424	0	15,220	0	0	0	2,198,830
Lake & Peninsula Borough	266,056	0	7,366	0	0	0	0	0	273,422
Matanuska-Susitna Borough	11,900,520	0	141,498	0	120,594	0	0	0	12,162,612
Nome CA	1,508,121	0	15,755	0	5,465	0	0	0	1,529,341
North Slope Borough	820,992	0	1,736	0	0	0	0	0	822,728
Northwest Arctic Borough	1,134,592	0	7,392	0	0	0	0	0	1,141,984
Prince of Wales-Outer Ketchikan	1,342,227	0	17,288	0	5,704	0	0	0	1,365,219
Sitka Borough	819,913	0	35,482	0	2,968	0	0	0	858,363
Skagway-Hoonah-Angoon CA	907,555	0	28,744	0	0	0	0	0	936,299
Southeast Fairbanks CA	1,249,544	0	31,483	0	7,804	0	0	0	1,288,831
Valdez - Cordova CA	1,688,848	0	79,355	0	1,563	0	0	0	1,769,766
Wade Hampton CA	2,029,050	0	2,953	0	2,934	0	0	0	2,034,937
Wrangell - Petersburg CA	1,168,576	0	19,212	0	11,586	0	0	0	1,199,374
Yakutat Borough	97,824	0	272	0	4,548	0	0	0	102,644
Yukon - Koyukuk CA	1,532,174	0	18,820	0	0	0	0	0	1,550,994
Area Unknown	1,382,547	0	36,465	0	10,639	0	0	0	1,429,651
In-State Totals	83,227,090	0	1,277,562	0	694,099	0	0	0	85,198,751
Interstate Totals	17,359,546	0	819,438	0	40,232	0	0	0	18,219,216
Totals All Areas	100,586,636	0	2,097,000	0	734,331	0	0	0	103,417,967

**10-Year Historical Data Series for Census Area Totals**

Year	State UI <sup>1</sup> Regular	State UI <sup>1</sup> EB	UCFE Regular	UCFE EB	UCX Regular	UCX EB	TEUC	SSB	All Programs Total
1998	\$109,037,747	\$5,478,978	\$3,243,112	\$115,178	\$962,573	\$39,421	\$0	\$119,680	\$118,996,689
1999	117,903,392	6,842,307	2,992,843	172,629	1,129,943	56,767	0	136,217	129,234,098
2000	105,694,293	4,721,726	2,681,902	87,153	986,447	44,851	0	115,354	114,331,726
2001	109,267,895	4,507,552	2,516,390	108,500	967,571	40,899	0	106,195	117,515,002
2002	120,352,390	9,941,415	2,389,643	194,986	900,034	44,535	21,226,533	161,904	155,211,440
2003	127,960,703	19,105,289	2,458,226	280,639	970,080	113,295	23,715,550	310,673	174,914,455
2004	121,065,387	8,255,371	2,492,908	117,262	938,108	61,346	2,730,934	122,136	135,783,452
2005	110,990,977	5,107,574	2,538,842	78,666	972,607	31,614	11,462	100,054	119,831,796
2006	105,616,167	1,354	2,109,651	0	771,739	0	1,664	0	108,500,575
2007	100,586,636	0	2,097,000	0	734,331	0	0	0	103,417,967

<sup>1</sup> UI and UI-Combined (includes federal portion of UI-Combined).

The TEUC program was effective from March 2002 to April 2004.

Source: Alaska Department of Labor and Workforce Development, Research and Analysis Section: UC 217 report, Benefit Payments by Industry and Area

**Table 2.14**  
**UI Regular Benefit Payments to Interstate Claimants**  
**By State, 2006-2007**

State	2006		2007	
	Regular Benefits Paid	Percent Distribution	Regular Benefits Paid	Percent Distribution
Alabama	\$134,545	0.8	\$142,371	0.8
Arizona	663,034	3.7	672,434	3.9
Arkansas	141,520	0.8	161,593	0.9
California	4,578,366	25.9	4,539,750	26.2
Colorado	238,855	1.3	237,402	1.4
Connecticut	29,493	0.2	22,925	0.1
Delaware	0	0.0	5,054	0.0
Dist. of Columbia	21,411	0.1	6,829	0.0
Florida	447,036	2.5	447,608	2.6
Georgia	173,783	1.0	199,902	1.2
Guam	0	0.0	0	0.0
Hawaii	426,717	2.4	388,923	2.2
Idaho	522,478	3.0	506,446	2.9
Illinois	177,163	1.0	179,529	1.0
Indiana	63,887	0.4	76,354	0.4
Iowa	60,188	0.3	72,980	0.4
Kansas	49,138	0.3	101,166	0.6
Kentucky	37,823	0.2	86,155	0.5
Louisiana	95,327	0.5	112,590	0.6
Maine	52,602	0.3	43,009	0.2
Maryland	35,671	0.2	47,360	0.3
Massachusetts	44,855	0.3	42,677	0.2
Michigan	183,194	1.0	248,276	1.4
Minnesota	204,092	1.2	261,587	1.5
Mississippi	82,495	0.5	82,660	0.5
Missouri	154,367	0.9	178,747	1.0
Montana	362,149	2.0	361,551	2.1
Nebraska	68,021	0.4	93,231	0.5
Nevada	451,572	2.6	363,813	2.1
New Hampshire	35,373	0.2	48,498	0.3
New Jersey	20,197	0.1	61,612	0.4
New Mexico	195,446	1.1	168,571	1.0
New York	204,152	1.2	135,397	0.8
North Carolina	228,923	1.3	189,984	1.1
North Dakota	33,512	0.2	26,265	0.2
Ohio	163,667	0.9	100,585	0.6
Oklahoma	139,934	0.8	126,143	0.7
Oregon	1,301,130	7.4	1,216,711	7.0
Pennsylvania	95,316	0.5	110,512	0.6
Puerto Rico	23,998	0.1	31,917	0.2
Rhode Island	10,051	0.1	17,444	0.1
South Carolina	113,473	0.6	99,006	0.6
South Dakota	67,256	0.4	66,230	0.4
Tennessee	133,481	0.8	151,522	0.9
Texas	997,218	5.6	944,081	5.4
Utah	165,762	0.9	120,223	0.7
Vermont	29,405	0.2	33,730	0.2
Virginia	96,714	0.5	115,063	0.7
Virgin Islands	4,233	0.0	6,436	0.0
Washington	3,902,598	22.0	3,599,402	20.7
West Virginia	32,844	0.2	41,725	0.2
Wisconsin	108,568	0.6	163,562	0.9
Wyoming	46,177	0.3	47,135	0.3
Canada	50,395	0.3	54,870	0.3
US Other	0	0.0	0	0.0
<b>Total</b>	<b>\$17,699,605</b>	<b>100.0</b>	<b>\$17,359,546</b>	<b>100.0</b>

Note: Data in this table are payments from Alaska to recipients in other states.

Percentages may not add to 100 percent due to rounding.

Source: Alaska Department of Labor and Workforce Development, Research and Analysis Section: UC-217 report, Benefit Payments by Industry and Area



**Table 2.15  
Payment of Dependents' Benefits, 1998-2007**

Year	Number of First Pays with Dependents	All First Pays	Percent First Pays with Dependents	Weeks Compensated with Dependents	All Weeks Compensated	Percent Weeks Compensated with Dependents	Amount of Dependent Benefits	Average Payment of Dependent Benefits	
								Claimants with Dependents	All Claimants
1998	19,226	43,750	43.9	278,024	632,329	44.0	12,486,840	44.91	19.75
1999	20,315	45,635	44.5	305,563	679,381	45.0	13,733,040	44.94	20.21
2000	19,228	43,557	44.1	278,312	619,357	44.9	12,545,376	45.08	20.26
2001	19,099	44,017	43.4	277,275	626,241	44.3	12,523,440	45.17	19.99
2002	20,491	48,722	42.1	298,151	696,807	42.8	13,446,864	45.10	19.30
2003	20,642	49,493	41.7	311,362	729,399	42.7	13,930,008	44.74	19.10
2004	18,839	46,224	40.8	287,121	687,388	41.8	12,871,944	44.83	18.73
2005	17,760	43,944	40.4	261,804	630,355	41.5	11,714,472	44.75	18.58
2006	16,264	40,859	39.8	242,072	588,450	41.1	10,803,264	44.63	18.36
2007	15,155	38,422	39.4	220,117	551,470	39.9	9,738,240	44.24	17.66

Notes: The allowance for dependents is \$24 with a maximum of \$72. Data are for the state regular UI program only.

Source: Alaska Department of Labor and Workforce Development, Research and Analysis Section: BEP 3565 P Quarterly Management Report

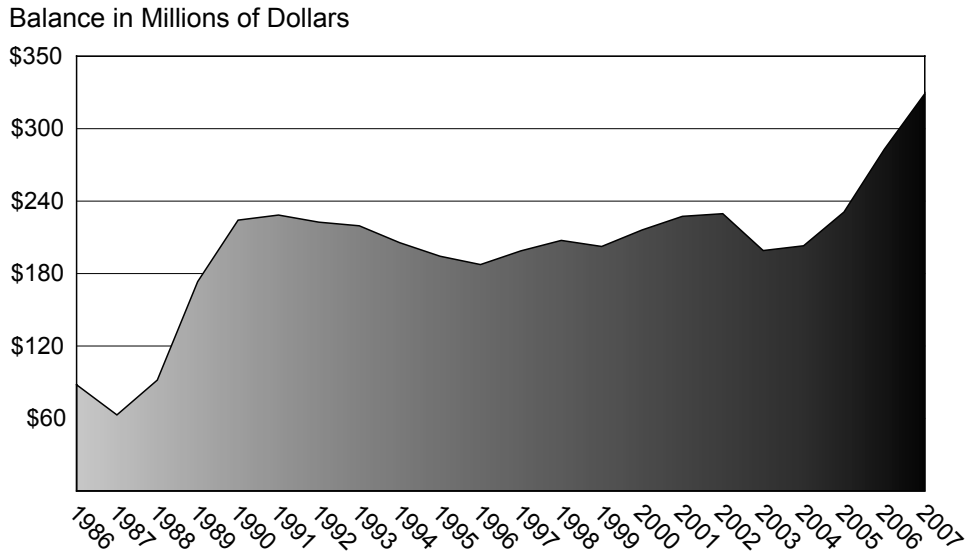
**Table 2.16**  
**Average Weekly Percentage of Unemployed**  
**Receiving UI Benefits, 2007**

State	Average Weekly Unemployed	Average Weeks Compensated	Compensated as Percent of Unemployed	Rank
Alabama	78,575	23,542	30.0	26
<b>Alaska</b>	21,450	10,605	49.4	4
Arizona	117,500	24,419	20.8	45
Arkansas	73,050	23,229	31.8	22
California	969,975	328,952	33.9	20
Colorado	103,525	18,182	17.6	49
Connecticut	84,175	37,527	44.6	9
Delaware	15,000	7,907	52.7	3
Dist. of Columbia	18,325	6,230	34.0	19
Florida	351,450	91,548	26.0	34
Georgia	214,850	45,489	21.2	44
Hawaii	16,800	6,012	35.8	14
Idaho	19,975	9,872	49.4	5
Illinois	336,225	117,383	34.9	16
Indiana	150,550	47,803	31.8	23
Iowa	60,975	22,626	37.1	12
Kansas	63,500	15,206	23.9	39
Kentucky	113,775	29,730	26.1	33
Louisiana	80,550	15,904	19.7	46
Maine	32,875	8,852	26.9	29
Maryland	112,150	29,927	26.7	32
Massachusetts	160,750	75,612	47.0	6
Michigan	359,675	124,370	34.6	18
Minnesota	134,275	44,629	33.2	21
Mississippi	84,450	15,137	17.9	48
Missouri	152,600	37,506	24.6	37
Montana	13,625	5,965	43.8	11
Nebraska	29,850	7,685	25.7	35
Nevada	64,775	22,438	34.6	17
New Hampshire	27,500	6,321	23.0	42
New Jersey	193,200	108,702	56.3	1
New Mexico	33,650	9,514	28.3	27
New York	429,800	152,627	35.5	15
North Carolina	214,925	64,878	30.2	25
North Dakota	11,700	2,963	25.3	36
Ohio	336,650	81,246	24.1	38
Oklahoma	74,950	12,076	16.1	50
Oregon	102,050	37,210	36.5	13
Pennsylvania	272,100	143,440	52.7	2
Puerto Rico	152,400	36,069	23.7	41
Rhode Island	28,125	12,328	43.8	10
South Carolina	127,100	30,357	23.9	40
South Dakota	13,550	1,663	12.3	52
Tennessee	141,325	38,349	27.1	28
Texas	498,400	79,728	16.0	51
Utah	35,700	6,413	18.0	47
Vermont	14,050	6,362	45.3	8
Virginia	123,675	26,622	21.5	43
Washington	159,300	42,593	26.7	30
West Virginia	36,950	11,191	30.3	24
Wisconsin	153,450	70,740	46.1	7
Wyoming	8,800	2,349	26.7	31
United States	7,077,750	2,238,612	31.6	

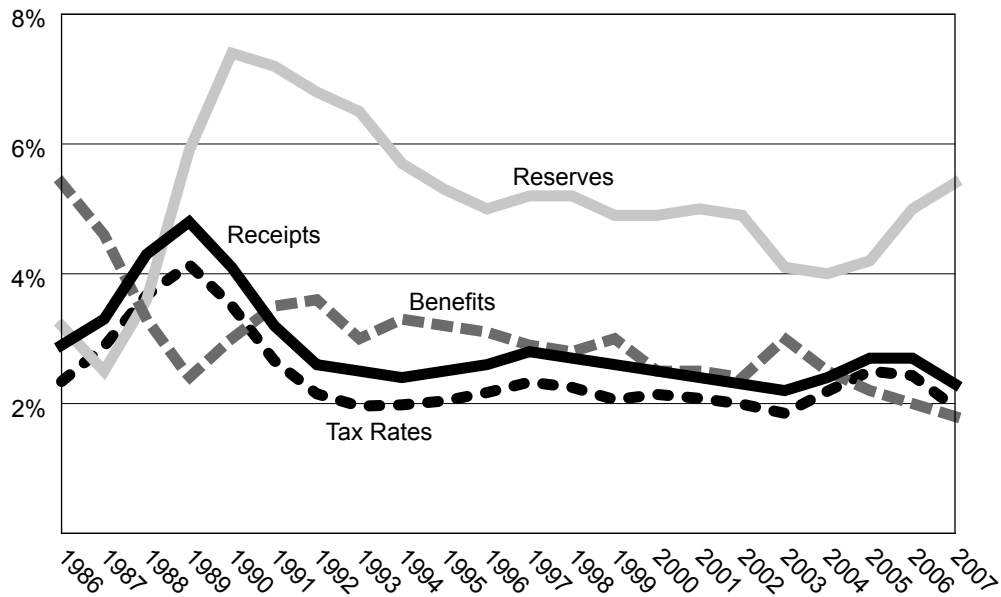
Source: Alaska Department of Labor and Workforce Development, Research and Analysis Section: UI Data Summary, Quarters 1-4, 2004, produced by the U.S. Department of Labor

# Chapter 3 Alaska's UI Financing System

**Figure 3.1 UI Trust Fund End-of-Year Balance  
1986-2007**

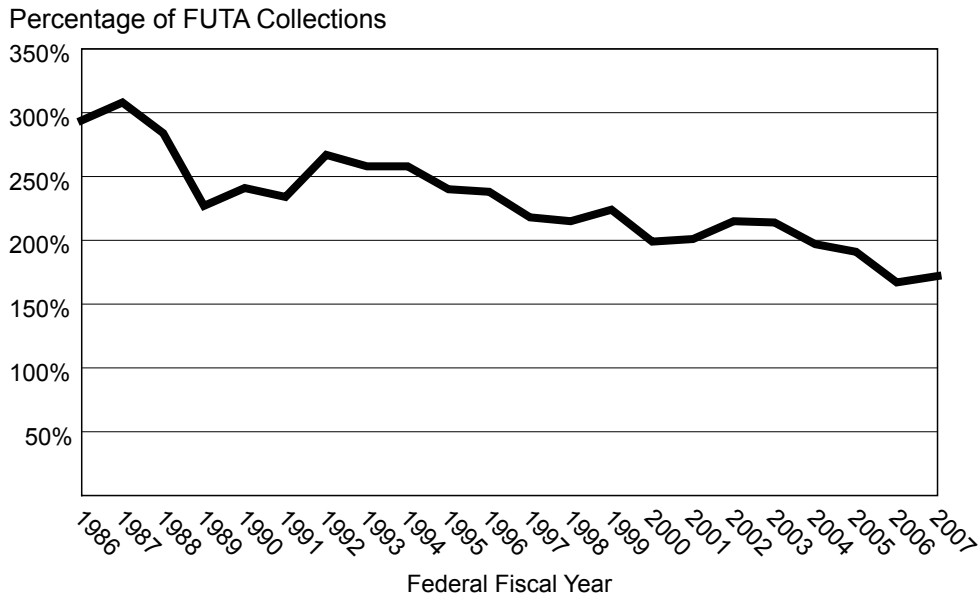


**Figure 3.2 Reserves, Benefits and Tax Rates  
as a Percentage of Taxable Payroll**



Source for Figures 3.1 and 3.2: Alaska Department of Labor and Workforce Development, Research and Analysis Section

**Figure 3.3 Administrative Grants as a Percentage of FUTA Collections**



Source: Alaska Department of Labor and Workforce Development, Research and Analysis Section

**Table 3.1  
Benefit Cost Rate, 1998-2007**

Year	Taxable Employment			Reimbursable Employment		Benefit Cost Rate (Percent)
	Benefits Paid (In Thousands)	Total Payroll (Lagged 1 Yr) (In Thousands)	Benefit Cost (Percent)	Benefits Paid (In Thousands)	Total Payroll (Lagged 1 Yr) (In Thousands)	
1998	\$112,764	\$5,943,917	1.9	\$10,347	\$1,960,524	0.5
1999	124,144	6,279,782	2.0	10,207	1,981,410	0.5
2000	111,096	6,389,605	1.7	9,273	1,999,588	0.5
2001	114,259	6,793,721	1.7	9,046	2,068,377	0.4
2002	114,736	7,230,311	1.6	9,862	2,154,236	0.5
2003	145,288	7,501,125	1.9	12,514	2,278,413	0.5
2004	130,269	7,730,837	1.7	11,681	2,362,563	0.5
2005	121,260	8,170,491	1.5	9,890	2,411,561	0.4
2006	113,787	8,629,441	1.3	8,284	2,519,453	0.3
2007	107,410	9,214,930	1.2	7,897	2,600,402	0.3

Sources: Alaska Department of Labor and Workforce Development, Research and Analysis Section: Unemployment Insurance Financial Transaction Summary, ETA 2-112 report to the U.S. Department of Labor; and Quarterly Census of Employment and Wages (QCEW) report to the U.S. Department of Labor

**Table 3.2**  
**Benefit Cost Rates by Industry, 2007**

<b>Industry</b>	<b>Benefits Paid 2006</b>	<b>Total Payroll 2005</b>	<b>Benefit Cost Rate (Percent) (Lagged 1 Yr)</b>
<b>Taxable Employers</b>			
Total	\$92,490,837	\$9,214,930,494	1.0
Agriculture, Forestry, Fishing <sup>1</sup> & Hunting	978,900	35,519,989	2.8
Mining	3,414,045	1,214,615,165	0.3
Utilities	602,145	117,112,638	0.5
Construction	21,062,826	1,060,905,046	2.0
Manufacturing	12,333,917	469,646,755	2.6
Wholesale Trade	1,456,397	302,207,210	0.5
Retail Trade	8,806,870	948,625,385	0.9
Transportation & Warehousing	6,259,226	945,208,153	0.7
Information	1,240,333	345,498,094	0.4
Finance & Insurance	2,111,021	450,764,916	0.5
Real Estate, Rental & Leasing	2,273,885	170,993,480	1.3
Professional & Technical Services	2,460,770	648,356,137	0.4
Management of Companies	167,218	87,235,462	0.2
Administrative & Waste Services	4,428,186	388,875,588	1.1
Educational Services	425,262	72,740,228	0.6
Health Care & Social Assistance	7,444,455	937,064,455	0.8
Arts, Entertainment & Recreation	1,005,482	71,121,981	1.4
Accommodation & Food Services	7,086,696	496,118,391	1.4
Other Services, except Public Administration	2,949,309	257,921,916	1.1
Public Administration	4,869,226	176,243,595	2.8
Unclassified	1,114,668	18,155,910	6.1
<b>Reimbursable Employers</b>			
Total	\$8,095,750	\$2,600,401,605	0.3
Transportation & Warehousing	190,240	50,226,445	0.4
Information	496	375,839	0.1
Educational Services	2,216,416	1,012,423,300	0.2
Professional & Technical Services	19,441	3,695,773	0.5
Health Care & Social Assistance	1,824,187	439,690,878	0.4
Arts, Entertainment & Recreation	8,471	471,539	1.8
Other Services, except Public Administration	164,490	20,172,670	0.8
Public Administration	3,672,006	1,071,401,358	0.3
Other	3	1,943,803	0.0

<sup>1</sup> Fishing excludes nearly all commercial fish harvesting employment

Sources: Alaska Department of Labor and Workforce Development, Research and Analysis Section: UC-217 report, Benefit Payments by Industry and Area; Quarterly Census of Employment and Wages (QCEW) report to the U.S. Department of Labor

**Table 3.3**  
**Trust Fund Deposits and Disbursements, 1998-2007**

<b>Deposits</b>									
<b>Year</b>	<b>U.I. Tax Contributions<sup>1</sup></b>	<b>Federal Share Extended Benefits</b>	<b>Amounts Rec'd From Reimb. Employers</b>	<b>Interstate Benefits Wage Combining</b>	<b>Federal Emerg. Comp<sup>2</sup></b>	<b>Penalty &amp; Interest<sup>3</sup></b>	<b>Other<sup>4</sup></b>	<b>Trust Fund Interest Earned</b>	<b>Total Revenue Deposited<sup>5</sup></b>
1998	\$109,544,374	\$2,392,600	\$10,491,200	\$1,401,321	\$0	\$4,555,936	\$5,689,820	\$13,410,177	\$147,485,428
1999	105,253,612	3,131,500	10,317,683	2,732,710	0	4,760,095	5,982,654	13,297,687	145,475,942
2000	110,928,171	2,016,000	9,754,979	2,425,500	0	6,765,671	5,209,934	13,465,280	150,565,535
2001	109,083,728	1,960,100	9,190,683	2,015,866	0	9,574,918	5,013,393	14,054,171	150,892,859
2002	107,100,241	3,985,800	9,654,868	17,715,300	23,256,300	9,722,188	4,825,500	14,439,725	190,699,922
2003	105,714,018	8,612,100	11,915,678	1,901,601	26,363,100	10,103,941	5,359,601	12,550,021	182,520,060
2004	123,396,419	3,714,300	12,660,108	2,816,279	4,564,790	10,651,316	4,967,505	10,157,097	172,927,815
2005	145,990,785	1,978,258	10,692,011	1,435,969	235,400	11,120,449	4,703,701	10,050,126	186,206,698
2006	155,630,450	0	9,101,144	1,143,862	0	12,130,828	3,719,601	11,922,978	193,648,864
2007	141,857,022	0	7,769,782	1,381,191	16,900	12,728,892	3,534,700	14,555,870	181,844,357

<b>Disbursements</b>									
<b>Year</b>	<b>Regular Benefits + SSB</b>	<b>Extended Benefit Payments</b>	<b>Reimb. Benefit Payments</b>	<b>Interstate Benefits Wage Combining</b>	<b>Federal Emerg. Comp.<sup>2</sup></b>	<b>Training And Building Fund</b>	<b>Other<sup>4</sup></b>	<b>Total Benefits Disbursed<sup>5</sup></b>	<b>Reserve Fund Balance<sup>6</sup></b>
1998	\$103,394,074	\$4,854,224	\$10,347,429	\$8,336,648	(\$54,352)	\$4,556,761	\$7,386,723	\$138,821,506	\$207,501,944
1999	115,358,617	6,102,710	10,207,166	8,466,554	(214,357)	4,675,030	5,915,499	150,511,220	202,466,665
2000	103,636,278	4,146,009	9,272,649	7,805,675	(263,836)	7,179,296	5,179,377	136,955,449	216,076,750
2001	104,948,376	3,872,511	9,045,948	9,381,601	(190,514)	7,189,124	5,295,069	139,542,115	227,427,495
2002	115,649,332	8,671,278	9,862,070	12,479,230	23,080,741	12,174,169	6,632,040	188,548,860	229,578,558
2003	125,467,879	17,066,115	12,513,957	13,239,427	26,565,752	10,116,699	7,987,796	212,957,625	199,140,993
2004	116,679,323	6,779,339	11,681,249	13,024,068	3,608,517	10,618,202	6,656,210	169,046,908	203,021,900
2005	108,545,340	4,079,233	9,890,482	12,114,777	(270,168)	11,295,341	12,536,018	158,191,022	230,973,776
2006	102,806,753	(305,756)	8,284,330	12,277,205	(448,030)	12,041,918	6,758,048	141,414,467	283,208,172
2007	95,880,401	(4,260)	7,897,265	12,912,576	31,663	12,628,147	6,678,243	136,024,035	329,028,495

<sup>1</sup> Excludes reimbursements.

<sup>2</sup> TEUC - Temporary Emergency Unemployment Compensation: March 2002 - April 2004.

<sup>3</sup> Net collections of penalties, interest and fines.

<sup>4</sup> PSE, DUA, TRA, transfer to Training and Building fund, prior year refunds, child support withholding transfers, federal UCFE and UCX benefits and receipts, federal share of regular benefits.

<sup>5</sup> Deposits from all sources including federal and all disbursements made to claimants.

<sup>6</sup> Amount available for benefits in trust fund on December 31.

Source: Alaska Department of Labor and Workforce Development, Research and Analysis Section: Unemployment Insurance Financial Transaction Summary, ETA 2-112 report to the U.S. Department of Labor

**Table 3.4**  
**Tax Base, Average Employer and Employee Tax Rates**  
**and Ratio of Taxable to Total Wages, 1998-2007**

Year	Payroll in Taxable Employment (In Thousands)		Ratio of Taxable to Total Payroll (Percent)	Tax Base (In dollars)	Average Employer Tax Rate		Average Employee Tax Rate	
	Total Payroll	Taxable Payroll			Percent of Taxable Payroll	Percent of Total Payroll	Percent of Taxable Payroll	Percent of Total Payroll
1998	\$6,279,782	\$3,995,639	63.6	\$24,100	2.25	1.43	0.58	0.4
1999	6,389,605	4,124,730	64.6	24,500	2.06	1.33	0.56	0.4
2000	6,793,721	4,396,916	64.7	24,800	2.14	1.39	0.54	0.3
2001	7,230,311	4,556,600	63.0	25,500	2.08	1.31	0.54	0.3
2002	7,501,125	4,722,968	63.0	26,000	1.99	1.25	0.52	0.3
2003	7,730,838	4,874,370	63.1	26,700	1.85	1.17	0.50	0.3
2004	8,170,491	5,130,288	62.8	27,100	2.19	1.38	0.50	0.3
2005	8,629,441	5,436,868	63.0	27,900	2.50	1.58	0.50	0.3
2006	9,214,930	5,720,285	62.1	28,700	2.43	1.51	0.51	0.3
2007	9,877,150	6,074,631	61.5	30,100	1.94	1.19	0.50	0.3

Sources: Alaska Statute 23.20.175; Alaska Statute 23.20.290; Alaska Department of Labor and Workforce Development, Research and Analysis Section: Unemployment Insurance Financial Transaction Summary, ETA 2-112 report to the U.S. Department of Labor

**Table 3.5  
Employer Accounts by Rate Type and  
Average Tax Rates by Industry**

**2007 Employers by Rate Type**

Industry	Experience Rated		Industry Rated		Penalty Rated		Total Rated Employers	
	No.	Percent of E-Rated	No.	Percent of I-Rated	No.	Percent of P-Rated	No.	Grand Total
Agriculture, Forestry, Fishing <sup>1</sup> & Hunting	112	0.7	24	1.3	2	1.2	138	0.8
Mining	137	0.9	20	1.1	0	0.0	157	0.9
Utilities	77	0.5	3	0.2	0	0.0	80	0.5
Construction	2,338	15.1	293	15.5	20	11.6	2,651	15.1
Manufacturing	468	3.0	53	2.8	4	2.3	525	3.0
Wholesale Trade	644	4.2	42	2.2	7	4.1	693	4.0
Retail Trade	1,850	12.0	117	6.2	17	9.9	1,984	11.3
Transportation & Warehousing	782	5.1	70	3.7	14	8.1	866	4.9
Information	230	1.5	21	1.1	2	1.2	253	1.4
Finance & Insurance	510	3.3	49	2.6	2	1.2	561	3.2
Real Estate & Rental & Leasing	549	3.5	57	3.0	5	2.9	611	3.5
Professional & Technical Services	1,577	10.2	214	11.3	11	6.4	1,802	10.3
Management of Companies	24	0.2	13	0.7	0	0.0	37	0.2
Administrative & Waste Services	920	5.9	153	8.1	14	8.1	1,087	6.2
Educational Services	187	1.2	26	1.4	1	0.6	214	1.2
Health Care & Social Assistance	1,410	9.1	143	7.6	5	2.9	1,558	8.9
Arts, Entertainment & Recreation	434	2.8	54	2.9	5	2.9	493	2.8
Accommodations & Food Services	1,541	10.0	143	7.6	33	19.2	1,717	9.8
Other Services, except Public Administration	1,277	8.3	252	13.3	13	7.6	1,542	8.8
Public Administration	334	2.2	3	0.2	11	6.4	348	2.0
Unclassified	72	0.5	141	7.5	6	3.5	219	1.2
<b>Total</b>	<b>15,473</b>	<b>100.0</b>	<b>1,891</b>	<b>100.0</b>	<b>172</b>	<b>100.0</b>	<b>17,536</b>	<b>100.0</b>
Percent of Grand Total		88.2		10.8		1.0		100.0

**Average Employer Tax Rates**

	2004	2005	2006	2007	
Total	2.86	2.84	2.36	1.91	Experienced-rated firms are those that have been subject to the Employment Security Act for four or more quarters and qualify for a rate determination based on their quarterly payroll experience.
Agriculture, Forestry, Fishing <sup>1</sup> & Hunting	3.43	3.40	2.86	2.26	
Mining	3.17	3.03	2.46	1.98	
Utilities	2.42	2.47	1.96	1.65	
Construction	3.37	3.32	2.76	2.25	
Manufacturing	3.04	2.96	2.44	1.97	Employers are assigned to rate classes based on their payroll decline experience as compared to all other rateable employers. Employers with low quarterly payroll declines receive more favorable rates than employers with higher quarterly payroll declines.
Wholesale Trade	2.83	2.80	2.30	1.87	
Retail Trade	2.76	2.74	2.30	1.84	
Transportation & Warehousing	3.04	2.83	2.33	1.88	
Information	2.48	2.52	2.10	1.73	
Finance & Insurance	2.48	2.48	2.04	1.67	Industry-rated firms are those that have been subject to the Employment Security Act for fewer than four quarters immediately preceding the computation date. They must pay the standard industry tax rate.
Real Estate & Rental & Leasing	2.65	2.65	2.22	1.78	
Professional & Technical Services	2.77	2.74	2.26	1.85	
Management of Companies	2.28	2.50	2.08	1.86	
Administrative & Waste Services	2.95	2.93	2.43	2.00	
Educational Services	2.76	2.80	2.38	1.93	Penalty-rated firms are those that fail to pay contributions or file reports on a timely basis. They must pay contributions at the highest rate.
Health Care & Social Assistance	2.36	2.33	1.93	1.55	
Arts, Entertainment & Recreation	3.12	3.11	2.61	2.12	
Accommodations & Food Services	2.94	2.93	2.46	1.99	
Other Services, except Public Administration	2.59	2.57	2.13	1.71	
Public Administration	2.83	2.80	2.32	1.84	Percentages may not add up to 100 percent due to rounding.
Unclassified	3.08	3.11	2.46	2.08	

<sup>1</sup> Fishing excludes nearly all commercial fish harvesting employment

Percentages may not add to 100 percent due to rounding.

Source: Alaska Department of Labor and Workforce Development, Research and Analysis Section: Taxable Wages Within Size of Payroll Code, Report No. BRT 5500 P



**Table 3.6**  
**UI Tax Rate Calculations and Tax Rates by Rate Class**  
**2008**

**Tax Rate Calculations**

	SFY 2004	SFY 2005	SFY 2006	SFY 2007
(1) Benefit Cost (Ben-Reimb-Int)		112,743,354	104,176,588	98,017,801
(2) Total Payroll (taxable employers)	7,901,597,474	8,370,948,699	8,989,141,045	9,540,702,187
(3) Taxable Payroll				5,953,446,304
(4) Benefit Cost for 3 Prev SFY				\$314,937,743
(5) Total Payroll, First 3 of Last 4 SFY				\$25,261,687,218
(6) 3-Yr Benefit Cost/Total Payroll (4)/(5)				0.012467
(7) Taxable/Total Payroll, Last SFY				0.624005
(8) Average Benefit Cost Rate (6)/(7)				0.109979
(9) UI Trust Fund Balance, Sep 30				\$314,980,970
(10) Total Payroll, Last SFY				\$9,540,702,187
(11) UI Trust Fund Reserve Rate (9)/(10)				0.03
(12) Solvency Adjustment				-0.001
(13) Average Employer Tax Rate as a Percent of Taxable Payroll (0.80 x ABCR) + TFSA = (0.80 x #8) + #12				1.50%
(14) Average Employee Tax Rate: (0.20 x ABCR) = (0.20 x #8)				0.50%

**Tax Rates for Employees and Experience Rated Employers**

Rate Class	Experience Factor	Employee Tax Rate Percent	Employer Tax Rate Percent	Total Tax Rate Percent
1	0.40	0.50	1.00	1.50
2	0.45	0.50	1.00	1.50
3	0.50	0.50	1.00	1.50
4	0.55	0.50	1.00	1.50
5	0.60	0.50	1.00	1.50
6	0.65	0.50	1.00	1.50
7	0.70	0.50	1.02	1.52
8	0.80	0.50	1.18	1.68
9	0.90	0.50	1.34	1.84
10	1.00	0.50	1.50	2.00
11	1.00	0.50	1.50	2.00
12	1.10	0.50	1.66	2.16
13	1.20	0.50	1.82	2.32
14	1.30	0.50	1.98	2.48
15	1.35	0.50	2.06	2.56
16	1.40	0.50	2.14	2.64
17	1.45	0.50	2.22	2.72
18	1.50	0.50	2.30	2.80
19	1.55	0.50	2.38	2.88
20	1.60	0.50	2.46	2.96
21	1.65	0.50	5.40	5.90

Notes:  
Total payroll, taxable payroll, and UI benefits costs are all for employees (current or former) of contributing (taxable) employers only.  
Reimbursable employers are excluded.

Sources: Alaska Statutes 23.20.290 Alaska Department of Labor & Workforce Development, Research and Analysis Section: Quarterly Census Employment and Wages (QCEW) report to the U.S. Department of Labor; Unemployment Insurance Financial Transaction Summary, ETA 2-112 report

**Table 3.7  
Administrative Costs  
1998-2007**

Federal Fiscal Year <sup>1</sup>	FUTA Collections (in millions)	UI Admin. Grants (in millions)	Employment Services Admin. Grants (In millions)	Total Admin. Grants	
				(In millions)	Percent of FUTA
1998	\$13.1	\$20.0	\$8.1	\$28.1	214.5
1999	13.1	20.0	9.4	29.4	224.4
2000	13.9	19.9	7.8	27.7	199.3
2001	14.3	20.8	7.9	28.7	200.7
2002	14.4	22.7	8.2	30.9	214.6
2003	14.4	22.7	8.1	30.8	213.9
2004	14.8	21.3	7.8	29.1	196.6
2005	15.2	21.3	7.7	29.0	190.8
2006	16.0	19.1	7.6	26.7	166.9
2007	16.3	20.6	7.4	28.0	171.8

<sup>1</sup> The federal fiscal year is a 12-month period beginning October 1st of the prior year, ending September 30th of the following year. For example, FFY 2007 would include activity between Oct. 1, 2006 - Sep. 30, 2007.

Source: U. S. Department of Labor, Division of Actuarial Services

**Table 3.8  
Collections, UI Regular Benefits Paid  
Reimbursable Employment  
1998-2007**

Year	Collections			Benefits Paid			Total Collections less Benefits Paid
	Total	Private Nonprofit	Government (State & Local)	Total	Private Nonprofit	Government (State & Local)	
1998	10,491,200	913,961	9,577,239	10,347,429	1,648,836	8,698,593	143,771
1999	10,317,683	1,021,259	9,296,424	8,316,206	1,910,398	6,405,809	2,001,477
2000	9,754,979	995,435	8,759,545	9,272,649	1,656,099	7,616,550	482,330
2001	9,190,683	911,483	8,279,200	9,045,949	1,616,565	7,429,384	144,734
2002	9,654,868	1,095,234	8,559,634	9,862,070	1,352,348	8,509,722	-207,202
2003	11,915,678	1,270,237	10,645,441	12,513,957	1,113,841	11,400,116	-598,279
2004	12,660,108	1,563,866	11,096,242	11,681,249	1,351,755	10,329,495	978,859
2005	10,692,011	1,385,980	9,306,031	9,890,482	1,118,780	8,771,702	801,529
2006	9,101,144	1,199,128	7,902,016	8,284,330	850,751	7,433,579	816,814
2007	7,769,782	990,146	6,779,635	7,897,265	917,077	6,980,188	-127,484
<b>10-Year Total</b>							<b>4,436,550</b>

Source: Alaska Department of Labor and Workforce Development, Research and Analysis Section: Unemployment Insurance Financial Transaction Summary, ETA 2-112 report to the U.S. Department of Labor

**Table 3.9**  
**Benefits Paid, Taxes Assessed, and Ratio of Benefits to Taxes for**  
**Taxable Employment, in Thousands, 2003-2007**

Industry	Benefits Paid (Regular + 1/2 EB) from the UC-217 Report					Total Employer and Employee Contributions Assessed from the QCEW Report				
	2003	2004	2005	2006	2007	2003	2004	2005	2006	2007
Totals (including unclassified)	\$127,407	\$113,127	\$103,386	\$97,130	\$92,489	\$115,458	\$137,258	\$162,961	\$168,776	\$151,154
Agriculture, Forestry, Fishing <sup>1</sup> & Hunting	1,849	1,723	1,148	1,101	979	1,032	1,059	1,222	1,055	786
Mining	8,187	4,760	3,383	2,644	3,414	6,858	8,877	10,544	12,359	11,371
Utilities	758	715	612	629	602	1,112	1,127	1,333	1,351	1,121
Construction	24,216	23,285	21,580	21,364	21,063	17,502	20,378	24,883	24,722	21,192
Manufacturing	14,754	15,119	13,893	13,338	12,334	8,600	10,830	13,043	13,137	11,921
Wholesale Trade	2,429	1,820	1,546	1,590	1,456	3,484	4,160	4,795	5,200	7,934
Retail Trade	13,020	11,020	10,077	9,252	8,807	13,524	15,563	18,482	19,004	13,256
Transportation & Warehousing	9,184	8,018	7,443	6,556	6,259	10,592	12,899	14,703	15,312	13,477
Information	1,969	1,897	1,499	1,492	1,240	3,193	3,627	4,196	4,099	4,089
Finance & Insurance	3,197	2,929	2,488	2,328	2,111	4,651	5,483	6,329	6,382	5,666
Real Estate, Rental & Leasing	2,962	2,685	2,710	2,888	2,274	2,489	2,960	3,681	3,530	2,863
Professional & Technical Services	3,826	3,472	2,679	2,669	2,461	6,885	8,017	9,898	10,538	9,594
Management of Companies	81	161	179	168	167	771	871	1,047	1,109	1,006
Administrative & Waste Services	5,820	5,187	4,578	4,509	4,428	5,655	6,658	8,279	8,551	7,848
Educational Services	1,126	103	143	397	425	699	780	936	1,001	893
Health Care & Social Assistance	8,186	8,294	8,466	7,733	7,444	10,091	12,276	14,486	15,434	13,790
Arts, Entertainment & Recreation	1,266	1,171	1,104	1,118	1,005	1,303	1,519	1,850	2,002	1,793
Accommodation & Food Services	10,141	8,988	8,388	7,539	7,087	9,909	11,680	13,764	14,430	13,010
Other Services, except Public Administration	4,739	5,010	4,454	3,450	2,949	3,868	4,420	4,964	5,334	4,679
Public Administration	8,152	6,333	6,571	5,432	4,869	3,102	3,504	3,934	3,678	4,303
Unclassified	1,545	437	448	933	1,115	139	569	584	549	563
	Ratio Of Benefits To Prior Year Contribution									
	2003	2004	2005	2006	2007					
Totals (including unclassified)	1.1	1.0	0.8	0.6	0.5					
Agriculture, Forestry, Fishing <sup>1</sup> & Hunting		1.7	1.1	0.9	0.9					
Mining		0.7	0.4	0.3	0.3					
Utilities		0.6	0.5	0.5	0.4					
Construction		1.3	1.1	0.9	0.9					
Manufacturing		1.8	1.3	1.0	0.9					
Wholesale Trade		0.5	0.4	0.3	0.3					
Retail Trade		0.8	0.6	0.5	0.5					
Transportation & Warehousing		0.8	0.6	0.4	0.4					
Information		0.6	0.4	0.4	0.3					
Finance & Insurance		0.6	0.5	0.4	0.3					
Real Estate, Rental & Leasing		1.1	0.9	0.8	0.6					
Professional & Technical Services		0.5	0.3	0.3	0.2					
Management of Companies		0.2	0.2	0.2	0.2					
Administrative & Waste Services		0.9	0.7	0.5	0.5					
Educational Services		0.1	0.2	0.4	0.4					
Health Care & Social Assistance		0.8	0.7	0.5	0.5					
Arts, Entertainment & Recreation		0.9	0.7	0.6	0.5					
Accommodation & Food Services		0.9	0.7	0.5	0.5					
Other Services, except Public Administration		1.3	1.0	0.7	0.6					
Public Administration		2.0	1.9	1.4	1.3					
Unclassified		3.1	0.8	1.6	2.0					

<sup>1</sup> Fishing excludes nearly all commercial fish harvesting employment

Note: Due to the transition from Standard Industrial Classification (SIC) system to the North American Industry Classification System (NAICS), comparable ratio of benefits for 2003 are unavailable.

Percentages may not add up to 100 percent due to rounding. The current year data are not used in calculating the ratio of benefits to contributions.

Source: Alaska Department of Labor and Workforce Development, Research and Analysis Section: Quarterly Census of Employment and Wages (QCEW) report to the U.S. Department of Labor

**Table 3.10**  
**Collections, Benefits Paid, Trust Fund Reserves and**  
**Average Employer Tax Rate as Percentages of Payroll 1998-2007**

Year	Percent of Total Payroll				Percent of Taxable Payroll			
	Collections	Benefits Paid	Year-End Reserve	Average Employer Tax Rate	Collections	Benefits Paid	Year-End Reserve	Average Employer Tax Rate
1998	1.7	1.8	3.3	1.43	2.7	2.8	5.2	2.25
1999	1.6	1.9	3.2	1.33	2.6	3.0	4.9	2.06
2000	1.6	1.6	3.2	1.39	2.5	2.5	4.9	2.14
2001	1.5	1.6	3.1	1.31	2.4	2.5	5.0	2.08
2002	1.4	1.5	3.1	1.25	2.3	2.4	4.9	1.99
2003	1.4	1.9	2.6	1.17	2.2	3.0	4.1	1.85
2004	1.5	1.6	2.5	1.38	2.4	2.5	4.0	2.19
2005	1.7	1.4	2.7	1.58	2.7	2.2	4.2	2.50
2006	1.7	1.2	3.1	1.51	2.7	2.0	5.0	2.43
2007	1.4	1.1	3.3	1.19	2.3	1.8	5.4	1.94

Note: Net benefits paid by taxable employers include regular unemployment benefits plus all State Supplemental Benefits payments plus Alaska's share of extended benefit payments for taxable employers plus the net of benefits paid minus receipts for interstate wage combining.  
Sources: Alaska Department of Labor and Workforce Development, Research and Analysis Section: Unemployment Insurance Financial Transaction Summary, ETA 2-112 report to the U.S. Department of Labor; Quarterly Census of Employment and Wages (QCEW) report to the U.S. Department of Labor

**Table 3.11**  
**UI Benefits Paid, Taxes Assessed and Covered Payroll**  
**by Industry, 2007**

Industry	Amount of Benefits Paid		Employer and Employee Contributions Assessed	Total Payroll	Taxable Payroll	Percent of Total Payroll Taxable
	Regular	Regular Plus 1/2 Extended Benefits				
Total	\$92,490,837	\$92,490,837	\$151,153,536	\$9,877,150,147	\$6,074,631,167	61.5
Agriculture, Forestry, Fishing <sup>1</sup> & Hunting	978,900	978,900	785,635	32,382,520	23,895,109	73.8
Mining	3,414,045	3,414,045	11,371,079	1,440,028,076	520,783,293	36.2
Utilities	602,145	602,145	1,186,970	122,605,579	57,745,187	47.1
Construction	21,062,826	21,062,826	21,510,780	1,105,439,371	690,747,532	62.5
Manufacturing	12,333,917	12,333,917	11,920,719	494,342,119	371,870,160	75.2
Wholesale Trade	1,456,397	1,456,397	7,933,701	318,584,804	190,243,812	59.7
Retail Trade	8,806,870	8,806,870	13,265,695	979,958,367	767,326,691	78.3
Transportation & Warehousing	6,259,226	6,259,226	13,478,310	1,018,912,892	554,809,576	54.5
Information	1,240,333	1,240,333	4,120,966	358,220,167	191,941,581	53.6
Finance & Insurance	2,111,021	2,111,021	5,683,938	480,127,578	258,706,515	53.9
Real Estate, Rental & Leasing	2,273,885	2,273,885	3,015,727	175,310,552	124,470,151	71.0
Professional & Technical Services	2,460,770	2,460,770	9,595,801	728,603,078	383,087,113	52.6
Management of Companies	167,218	167,218	1,005,776	87,043,753	43,678,668	50.2
Administrative & Waste Services	4,428,186	4,428,186	7,848,693	423,808,183	301,945,080	71.2
Educational Services	425,262	425,262	899,226	57,912,712	41,286,780	71.3
Health Care & Social Assistance	7,444,455	7,444,455	13,891,563	974,705,014	661,428,119	67.9
Arts, Entertainment & Recreation	1,005,482	1,005,482	1,811,614	75,617,520	64,830,576	85.7
Accommodation & Food Services	7,086,696	7,086,696	13,010,291	525,456,521	473,221,468	90.1
Other Services, except Public Administration	2,949,309	2,949,309	4,687,906	267,916,001	195,421,337	72.9
Public Administration	4,869,226	4,869,226	3,556,594	188,124,678	140,219,896	74.5
Unclassified	1,114,668	1,114,668	572,552	22,050,662	16,972,523	77.0

<sup>1</sup> Fishing excludes nearly all commercial fish harvesting employment

Notes: Reimbursable account data are excluded from this table. Federally funded programs and federal employment are excluded.

Sources: Alaska Department of Labor and Workforce Development, Research and Analysis Section: Quarterly Census of Employment and Wages (QCEW) report to the U.S. Department of Labor; UC-217 report, Benefit Payments by Industry and Area

**Table 3.12**  
**UI Benefits Paid as a Percent of Taxes Assessed**  
**and Covered Payroll by Industry, 2007**

Industry	Regular Benefits as a Percentage of:			Regular Benefits plus 1/2 Extended Benefits as a Percentage of:		
	Collections	Total Payroll	Taxable Payroll	Collections	Total Payroll	Taxable Payroll
Total	61.2	0.9	1.5	61.2	0.9	1.5
Agriculture, Forestry, Fishing <sup>1</sup> & Hunting	124.6	3.0	4.1	124.6	3.0	4.1
Mining	30.0	0.2	0.7	30.0	0.2	0.7
Utilities	50.7	0.5	1.0	50.7	0.5	1.0
Construction	97.9	1.9	3.0	97.9	1.9	3.0
Manufacturing	103.5	2.5	3.3	103.5	2.5	3.3
Wholesale Trade	18.4	0.5	0.8	18.4	0.5	0.8
Retail Trade	66.4	0.9	1.1	66.4	0.9	1.1
Transportation & Warehousing	46.4	0.6	1.1	46.4	0.6	1.1
Information	30.1	0.3	0.6	30.1	0.3	0.6
Finance & Insurance	37.1	0.4	0.8	37.1	0.4	0.8
Real Estate, Rental & Leasing	75.4	1.3	1.8	75.4	1.3	1.8
Professional & Technical Services	25.6	0.3	0.6	25.6	0.3	0.6
Management of Companies	16.6	0.2	0.4	16.6	0.2	0.4
Administrative & Waste Services	56.4	1.0	1.5	56.4	1.0	1.5
Educational Services	47.3	0.7	1.0	47.3	0.7	1.0
Health Care & Social Assistance	53.6	0.8	1.1	53.6	0.8	1.1
Arts, Entertainment & Recreation	55.5	1.3	1.6	55.5	1.3	1.6
Accommodation & Food Services	54.5	1.3	1.5	54.5	1.3	1.5
Other Services, except Public Administration	62.9	1.1	1.5	62.9	1.1	1.5
Public Administration	136.9	2.6	3.5	136.9	2.6	3.5
Unclassified	194.7	5.1	6.6	194.7	5.1	6.6

<sup>1</sup> Fishing excludes nearly all commercial fish harvesting employment

Notes: Reimbursable account data are excluded from this table. Federally funded programs and federal employment are excluded.

Sources: Alaska Department of Labor and Workforce Development, Research and Analysis Section: Quarterly Census of Employment and Wages (QCEW) report to the U.S. Department of Labor; UC-217 report, Benefit Payments by Industry and Area

# Appendix A

## Data Sources and Limitations

### Limitations of Data

The data in this publication are from several sources, each with its limitations. Much of the data come from printed reports produced from files in the State's mainframe computer. While reports can come from the same source, data that appear similar are not necessarily comparable, because the programs that produce the reports are run at different times and using different selection criteria.

Differences also occur when tables are derived from different sources. Each table includes the data source at the bottom of the page. The reader should be cautious about other limitations as well. Percentages may not sum to 100% due to rounding when using only one or two digits. Monetary data are reported to the full dollar amount whenever possible throughout the publication, but the dollar amounts in some tables are rounded to the nearest \$1,000 because of space limitations. Finally, industry groupings include subcategories for manufacturing and mining; these must be subtracted when summing the columns.

The North American Industry Classification System (NAICS) has replaced the Standard Industrial Classification System (SIC). The new NAICS classification system interrupts time series data. Two categories, Construction and Mining, remain relatively unchanged in the transition from SIC to NAICS. The majority, however, are either new or include a different mix of industries. Users of the Actuarial Study will notice the change in tables that previously presented 10 years of data.

### CHAPTER 1: UI Covered Employment and Wages

Chapter 1 provides information on employment, payroll, and earnings. The major source of data is the Quarterly Census of Employment and Wages report (QCEW), formerly known as the ES-202 report, a report submitted to the U.S. Department of Labor, Bureau of Labor Statistics.

The information used in QCEW is derived from quarterly payroll and employment information submitted to the Alaska Department of Labor and Workforce Development (DOLWD) by employers in Alaska. The information is also derived from DOLWD estimates for delinquent employers.

The QCEW includes all employers covered by Alaska's unemployment insurance system. It also includes Alaska employers' average monthly employment, total payroll, and taxable payroll. Additionally, QCEW includes taxable employers' contributions assessed by the state and paid into the UI Trust Fund.

All data found in the chapters are broken out by industry, area, ownership, and tax status.

"Average monthly employment" is an estimate of employment based on actual employment data covering that pay period which includes the 12th of each month. It is an estimate of the number of jobs filled each month. Caution must be used when deriving annual earnings from these figures, as they represent average annual earnings per job, not per worker. Payroll is the actual total payroll during each quarter.

Throughout chapter 1, industries are broken out according to NAICS categories. Specific industries, based on three digit NAICS codes, were selected because of their relevance to the Alaska economy. The same categories are used for benefit payments in chapters 2 and 3. Employment, payroll, and earnings information is also broken out by ownership (private sector, state government, and local government). In all industry and ownership categories, federal government employment is excluded, as federal employees and members of the military are not covered under the state unemployment insurance program.

It is notable that public administration (NAICS codes 921-928) is not directly comparable with state and local government ownership. While all of public administration employment is included in either state or local government, the opposite is not true; some of the operations included under state or local government ownership are listed under other industries than public administration, particularly construction, transportation, and services.

### CHAPTER 2: UI Benefit Payments

Chapter 2 provides information on benefit payments. Information on unemployment claims is entered into Alaska's Data Base 2 System (DB2), and is recorded in the State's mainframe computer. Three of the basic reports from this file form the basis of most benefit payment data used in this publication.

Payments by industry and area, Tables 2.9-2.12 and Tables 2.14-2.15, are derived from the UC-217 report. The UC-217 report is a monthly compilation of data by three digit NAICS codes and three digit geographic area codes.

Two reports provide information for the payment data on Tables 2.5-2.8, 2.13, and 2.16. These data are derived from the DOLWD's Quarterly Management Report, which scans, weekly, the Department's active claimant file. Some of the data are also derived from the U.S. Department of Labor's

Claims Activity Report (ETA 5159), which is taken from the weekly and monthly management reports.

Table 2.1 uses data from the Local Area Unemployment Statistics (LAUS), a DOLWD report produced for the U.S. Department of Labor. This report estimates the total number of employed and unemployed in the state each month.

Data in Table 2.2 are derived from the “Claimant Characteristics” program. This program provides a special compilation of information on all claimants who received unemployment compensation during a specified year. Occupations are listed according to classifications in the Dictionary of Occupational Titles (or DOT codes). Ethnic information is based on information voluntarily submitted at the time of initial filing.

Table 2.6 uses payment data from the yearly ETA 5159 report on all states compiled by the U.S. Department of Labor, Division of Actuarial Services.

Table 2.16 is derived from the UI Data Summary, a quarterly publication of key UI information published by the U.S. Department of Labor, Division of Actuarial Services.

### **CHAPTER 3: Alaska’s UI Benefit Financing System**

Chapter 3 discusses financial transactions, Alaska’s UI Trust Fund, and Alaska’s benefit financing structure. One of the major subjects of the chapter is benefit cost. There-

fore, it draws heavily from the Alaska Department of Labor and Workforce Development’s Benefit Payments by Industry and Area (UC 217) report and the QCEW quarterly reports (the USDOL’s Quarterly Census of Employment and Wages report). In fact, several of the tables directly reproduce data reported in chapters one and two.

The other major data source for chapter 3 is the Financial Transactions Summary (ETA 2112). This is a monthly accounting report produced by DOLWD. It is the most accurate source of information on financial transactions and cash flow. Its major limitation is that it does not break out data by industry or area. It is used to compute UI tax rates (see tables 3.4 and 3.6), benefit costs, and benefit cost rates (Tables 3.1, 3.2 and 3.6). It is also the source for UI Trust Fund balances (Tables 3.3, 3.6 and 3.10), deposits and disbursements for all programs (Table 3.3), as well as interstate wage combining, reimbursable employers (Table 3.8), and collections, benefits and trust fund balance as a percentage of wages. (See table 3.4, 3.10, and 3.11)

Table 3.5 lists experience ratings by industry, that are reported on the “Array of Taxable Wages Within Size of Payroll Codes”, a yearly listing of employers, their payroll experience, and their quarterly decline quotients. This information is also produced by DOLWD.







