

Chapter 1

The State Population

Introduction

This chapter covers statewide population trends for Alaska. It contains information on the components of population change (births, deaths, and migration), as well as discussion of statewide age, sex, race and ethnicity, and household composition. Data provided for decennial census years have an April 1 reference date, and data for all others years have a July 1 reference date.

2015 Population and Density

Alaska had 737,625 residents on July 1, 2015, or 0.2 percent of the U.S. population. The 2015 resident population of the United States, excluding territories and military overseas, was 321,418,820.

Alaska was the third least populous state in 2015. The states with fewer people than Alaska were Wyoming with 586,107 and Vermont with 626,042. The District of Columbia also had

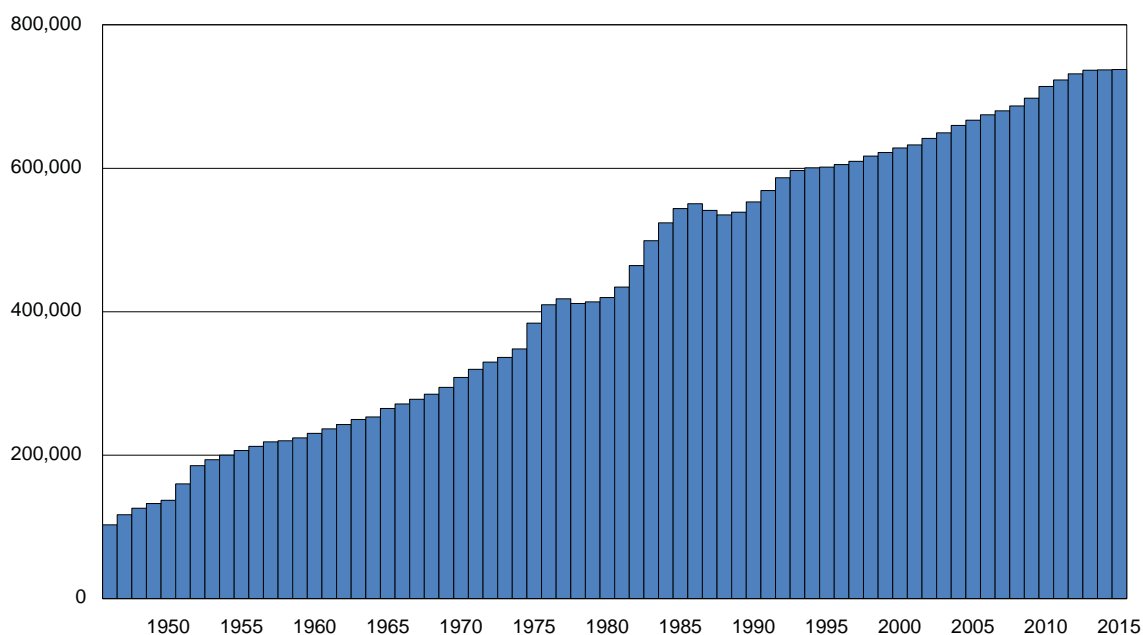
fewer people than Alaska, at 672,228.

Alaska has 570,641 square miles of land, or 16 percent of the U.S., and its water area is 94,743 square miles. Over 35 percent of total U.S. water area is in Alaska.

Alaska had 1.3 people per square mile in 2015, in contrast to 91 per square mile for the U.S. as a whole. Excluding Anchorage, which contains 41 percent of the state's population but only 0.3 percent of the land, Alaska averaged 0.8 people per square mile in 2015.

The majority of Alaskans live in towns and villages or clustered settlements. Most of the state's land area is owned by the federal government, the state government, or Alaska Native corporations. Excluding these areas, most of which place exclusions or restrictions on settlement, about 1 percent of the state's land is in other private ownership. Most of Alaska has settlements of moderate density surrounded by large tracts of uninhabited land.

Figure 1.1
Alaska Total Population, 1946 to 2015



Sources: Alaska Department of Labor and Workforce Development, Research and Analysis Section

Table 1.1**Annual Components of Population Change for Alaska, 1959 to 2015**

| July 1 to June 30 | End of Period Population | Population Change | Average Rate of Change | Births | Birth Rate | Deaths | Death Rate | Natural Increase | Net Migration |
|------------------------------|-------------------------------------|------------------------------|---------------------------------------|---------------|-----------------------|---------------|-----------------------|-----------------------------|--------------------------|
| 1959-60 | 230,400 | 6,400 | 2.82 | 7,290 | 3.21 | 1,250 | 0.55 | 6,040 | 360 |
| 1960-61 | 236,700 | 6,300 | 2.70 | 7,560 | 3.24 | 1,300 | 0.56 | 6,260 | 40 |
| 1961-62 | 242,800 | 6,100 | 2.54 | 7,610 | 3.17 | 1,290 | 0.54 | 6,320 | -220 |
| 1962-63 | 249,900 | 7,100 | 2.88 | 7,670 | 3.11 | 1,320 | 0.54 | 6,350 | 750 |
| 1963-64 | 253,200 | 3,300 | 1.31 | 7,480 | 2.97 | 1,380 | 0.55 | 6,100 | -2,800 |
| 1964-65 | 265,200 | 12,000 | 4.63 | 7,170 | 2.77 | 1,390 | 0.54 | 5,780 | 6,220 |
| 1965-66 | 271,500 | 6,300 | 2.35 | 6,810 | 2.54 | 1,320 | 0.49 | 5,490 | 810 |
| 1966-67 | 277,900 | 6,400 | 2.33 | 6,410 | 2.33 | 1,300 | 0.47 | 5,110 | 1,290 |
| 1967-68 | 284,900 | 7,000 | 2.49 | 6,350 | 2.26 | 1,317 | 0.47 | 5,033 | 1,967 |
| 1968-69 | 294,600 | 9,700 | 3.35 | 6,670 | 2.30 | 1,330 | 0.46 | 5,340 | 4,360 |
| 1969-70 | 308,500 | 13,900 | 4.61 | 7,230 | 2.40 | 1,370 | 0.45 | 5,860 | 8,040 |
| 1970-71 | 319,600 | 11,100 | 3.53 | 7,437 | 2.37 | 1,444 | 0.46 | 5,993 | 5,107 |
| 1971-72 | 329,800 | 10,200 | 3.14 | 7,129 | 2.20 | 1,462 | 0.45 | 5,667 | 4,533 |
| 1972-73 | 336,400 | 6,600 | 1.98 | 6,781 | 2.04 | 1,468 | 0.44 | 5,313 | 1,287 |
| 1973-74 | 348,100 | 11,700 | 3.42 | 6,847 | 2.00 | 1,467 | 0.43 | 5,380 | 6,320 |
| 1974-75 | 384,100 | 36,000 | 9.83 | 7,275 | 1.99 | 1,497 | 0.41 | 5,778 | 30,222 |
| 1975-76 | 409,800 | 25,700 | 6.47 | 7,694 | 1.94 | 1,570 | 0.40 | 6,124 | 19,576 |
| 1976-77 | 418,000 | 8,200 | 1.98 | 8,175 | 1.98 | 1,612 | 0.39 | 6,563 | 1,637 |
| 1977-78 | 411,600 | -6,400 | -1.54 | 8,668 | 2.09 | 1,654 | 0.40 | 7,014 | -13,414 |
| 1978-79 | 413,700 | 2,100 | 0.51 | 9,043 | 2.19 | 1,654 | 0.40 | 7,389 | -5,289 |
| 1979-80 | 419,800 | 6,100 | 1.46 | 9,400 | 2.26 | 1,671 | 0.40 | 7,729 | -1,629 |
| 1980-81 | 434,300 | 14,500 | 3.40 | 9,912 | 2.32 | 1,738 | 0.41 | 8,174 | 6,326 |
| 1981-82 | 464,300 | 30,000 | 6.68 | 10,783 | 2.40 | 1,775 | 0.40 | 9,008 | 20,992 |
| 1982-83 | 499,100 | 34,800 | 7.22 | 11,728 | 2.43 | 1,862 | 0.39 | 9,866 | 24,934 |
| 1983-84 | 524,000 | 24,900 | 4.87 | 12,319 | 2.41 | 1,945 | 0.38 | 10,374 | 14,526 |
| 1984-85 | 543,900 | 19,900 | 3.73 | 12,727 | 2.38 | 2,033 | 0.38 | 10,694 | 9,206 |
| 1985-86 | 550,700 | 6,800 | 1.24 | 12,556 | 2.29 | 2,110 | 0.39 | 10,446 | -3,646 |
| 1986-87 | 541,300 | -9,400 | -1.72 | 11,941 | 2.19 | 2,096 | 0.38 | 9,845 | -19,245 |
| 1987-88 | 535,000 | -6,300 | -1.17 | 11,483 | 2.13 | 2,073 | 0.39 | 9,410 | -15,710 |
| 1988-89 | 538,900 | 3,900 | 0.73 | 11,468 | 2.14 | 2,088 | 0.39 | 9,380 | -5,480 |
| 1989-90 | 553,171 | 14,271 | 2.61 | 11,776 | 2.16 | 2,142 | 0.39 | 9,634 | 4,637 |
| 1990-91 | 569,054 | 15,883 | 2.83 | 11,798 | 2.10 | 2,225 | 0.40 | 9,573 | 6,310 |
| 1991-92 | 586,722 | 17,668 | 3.06 | 11,744 | 2.03 | 2,214 | 0.38 | 9,530 | 8,138 |
| 1992-93 | 596,906 | 10,184 | 1.72 | 11,347 | 1.92 | 2,477 | 0.42 | 8,870 | 1,314 |
| 1993-94 | 600,622 | 3,716 | 0.62 | 10,978 | 1.83 | 2,422 | 0.40 | 8,556 | -4,840 |
| 1994-95 | 601,581 | 959 | 0.16 | 10,439 | 1.74 | 2,500 | 0.42 | 7,939 | -6,980 |
| 1995-96 | 605,212 | 3,631 | 0.60 | 10,079 | 1.67 | 2,707 | 0.45 | 7,372 | -3,741 |
| 1996-97 | 609,655 | 4,443 | 0.73 | 10,018 | 1.65 | 2,574 | 0.42 | 7,444 | -3,001 |
| 1997-98 | 617,082 | 7,427 | 1.21 | 9,924 | 1.62 | 2,642 | 0.43 | 7,282 | 145 |
| 1998-99 | 622,000 | 4,918 | 0.79 | 9,864 | 1.59 | 2,609 | 0.42 | 7,255 | -2,337 |
| 1999-00 | 628,346 | 6,346 | 1.02 | 10,102 | 1.62 | 2,829 | 0.45 | 7,273 | -927 |
| 2000-01 | 632,716 | 4,370 | 0.69 | 9,980 | 1.58 | 2,934 | 0.47 | 7,046 | -2,676 |
| 2001-02 | 641,729 | 9,013 | 1.41 | 9,892 | 1.55 | 3,075 | 0.48 | 6,817 | 2,196 |
| 2002-03 | 649,466 | 7,737 | 1.20 | 10,025 | 1.55 | 3,107 | 0.48 | 6,918 | 819 |
| 2003-04 | 659,653 | 10,187 | 1.56 | 10,299 | 1.57 | 3,060 | 0.47 | 7,239 | 2,948 |
| 2004-05 | 667,146 | 7,493 | 1.13 | 10,368 | 1.56 | 3,167 | 0.48 | 7,201 | 292 |
| 2005-06 | 674,583 | 7,437 | 1.11 | 10,656 | 1.59 | 3,163 | 0.47 | 7,493 | -56 |
| 2006-07 | 680,169 | 5,586 | 0.82 | 11,065 | 1.63 | 3,456 | 0.51 | 7,609 | -2,023 |
| 2007-08 | 686,818 | 6,649 | 0.97 | 11,283 | 1.65 | 3,523 | 0.52 | 7,760 | -1,111 |
| 2008-09 | 697,828 | 11,010 | 1.59 | 11,504 | 1.66 | 3,503 | 0.51 | 8,001 | 3,009 |
| 2009-10 | 714,021 | 16,193 | 2.29 | 11,202 | 1.59 | 3,563 | 0.50 | 7,639 | 8,554 |
| 2010-11 | 723,133 | 9,112 | 1.27 | 11,694 | 1.63 | 3,844 | 0.54 | 7,850 | 1,262 |
| 2011-12 | 731,630 | 8,497 | 1.17 | 11,701 | 1.53 | 3,853 | 0.53 | 7,247 | 1,250 |
| 2012-13 | 736,616 | 4,986 | 0.68 | 11,312 | 1.54 | 3,980 | 0.54 | 7,332 | -2,346 |
| 2013-14 | 737,354 | 738 | 0.10 | 11,444 | 1.54 | 3,967 | 0.53 | 7,477 | -6,739 |
| 2014-15 | 737,625 | 271 | 0.04 | 11,327 | 1.54 | 4,282 | 0.58 | 7,045 | -6,774 |

Sources: Alaska Department of Labor and Workforce Development, Research and Analysis Section

Alaska Population History

The population of Alaska was quite small before the gold rush in the 1890s, although early territorial censuses were incomplete. The first census in 1880 counted 33,426 people. By 1900, the gold rush had nearly doubled the state's population to 63,592.

After the turn of the century, the population of Alaska remained roughly the same for 40 years. By 1939, it was 59,278. The state's gold production had declined, and much of the state remained inaccessible.

World War II brought the construction of the ALCAN (Alaska-Canadian) Highway, which resulted in dramatic growth for the state's population. The war and ALCAN construction played a key role in the development of Anchorage and Fairbanks.

Alaska's population grew rapidly from the end of World War II in 1945 through the Korean War years of 1950 through 1953. The state gained more than 25,000 people between 1951 and 1952 alone. After that, the population grew at a slower pace until the military buildups for the Vietnam War in the 1960s. At statehood in 1959, Alaska had approximately 224,000 people.

Construction of the 800-mile Trans-Alaska Oil Pipeline dramatically boosted population growth in the 1970s. The

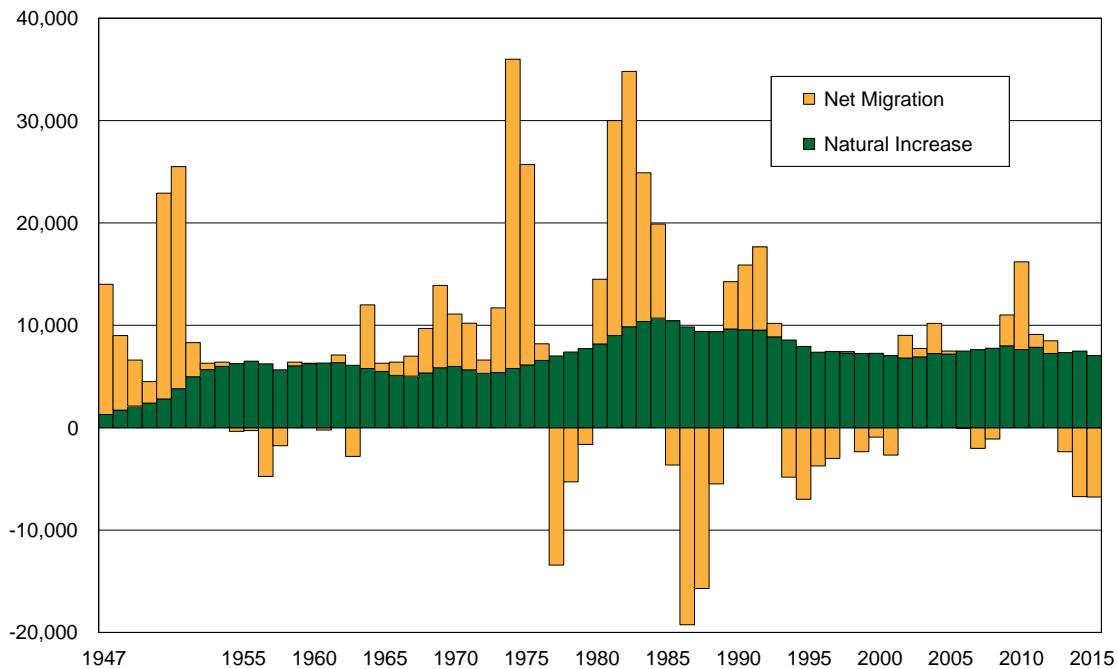
pipeline linked the giant North Slope oilfield of Prudhoe Bay with the oil terminal shipping facilities at Valdez. Pipeline construction began in 1973 and peaked between 1974 and 1975 with a migration gain of more than 30,000 people over that 12-month period. The boom from pipeline construction was followed by a large population loss after its completion. Between 1977 and 1978, the state had a net migration loss of more than 13,000 people.

With new revenue from oil production, Alaska had a massive economic boom between 1980 and 1985. The population increased nearly 30 percent in those five years, making Alaska the fastest-growing state. It grew most between 1982 and 1983, gaining nearly 25,000 people from net migration alone.

By 1986, falling oil prices triggered a recession. Between 1986 and 1987, the state lost more than 19,000 people through net migration for an overall population loss of 9,400. The cumulative net out-migration loss between 1986 and 1989 was about 40,000. The state had a high number of births during those years, but the population still dropped by more than 2 percent from its 1986 level. In 1989, net migration numbers became positive again.

Alaska's population increased more than 36 percent between 1970 and 1980 and nearly 32 percent between 1980 and 1990. For comparison, the U.S. as a whole grew by slightly more than 10 percent between 1970 and 1980 and another 10 percent between 1980 and 1990.

Figure 1.2
Components of Population Change for Alaska, 1947 to 2015



Source: Alaska Department of Labor and Workforce Development, Research and Analysis Section

The 1990s began with three years of economic recovery and net migration gains that were followed by a period of net migration losses due in part to military base closures. Birth rates also declined in the 1990s due to the aging of “baby boomers” (people born between 1946 and 1964). The state’s population increased by less than 14 percent for the decade, slightly more than that of the nation as a whole.

Alaska then grew steadily between 2000 and 2010, and although high population turnover continued due to migration, the gains and losses were fairly balanced through 2009. Between 2009 and 2010, the state’s net migration gain topped 8,500 people, the most for a single year since the 1980s. This big gain was likely related to the late-2000s recession, which affected the nation far more severely than it did Alaska.

The state’s population grew steadily from 2010 to 2013, but remained roughly flat between 2013 and 2015 due to net migration losses.

Components of Change

Population change is made up of natural increase (births minus deaths) and migration, as shown in Table 1.1. Natural increase is a fairly stable component of population change because birth and death trends tend not to change quickly. Migration is a much less stable component of population

change in the state, often shifting dramatically from one year to the next.

Births and Deaths

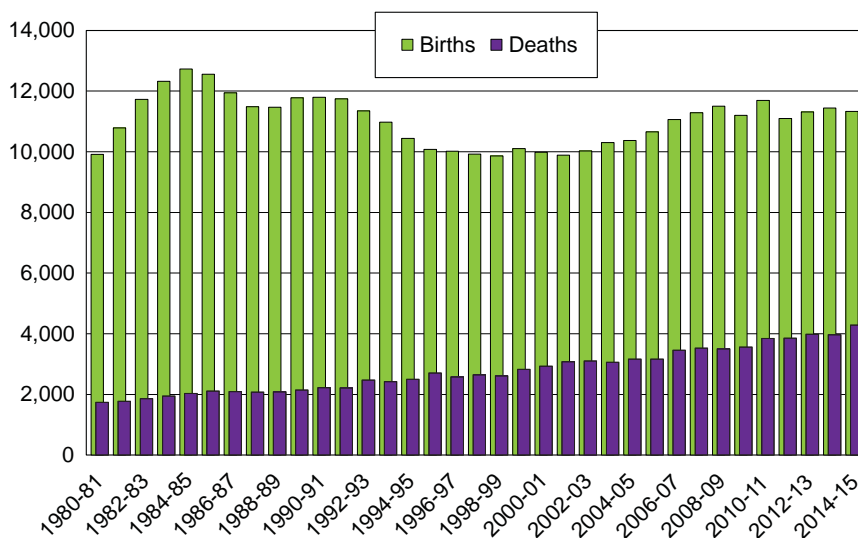
Births are a big part of population change for Alaska every year. In recent years, the state gained between 11,000 and 12,000 newborns annually.

Birth rates are best analyzed with a measure called the “total fertility rate,” which is the total number of children that would be born to a woman if she lived her entire life with that year’s “age-specific fertility rates,” or the number of births per woman by age. A total fertility rate of around 2.1 is needed for a population to replace itself through births alone.

Based on data from the National Center for Health Statistics, the total fertility rate for the U.S. was between 1.7 and 2.0 from the early 1970s to the late 1980s. In 1990, the national total fertility rate reached 2.1 children per woman and remained between 1.8 and 2.1 through 2015.

Alaska’s total fertility rate has consistently topped the national rate. Based on Alaska birth records and annual population estimates, Alaska’s rate from the early 1970s through the late 1980s was between 2.0 and 2.5. In 1990, Alaska’s total fertility rate reached more than 2.6, then fluctuated between 2.2 and 2.6 through 2010. Since 2010, it has remained between 2.0 and 2.4.

Figure 1.3
Births and Deaths in Alaska, 1980 to 2015



Note: Annual birth and death data are reported from July 1 through June 30.

Source: Alaska Department of Labor and Workforce Development, Research and Analysis Section

Table 1.1 shows trends in the crude birth rate (number of births divided by the total population) and crude death rate in Alaska. Newborns have accounted for less than 2 percent of the yearly population since the early 1990s, when the large population of baby boomers began to age past child-bearing years. The crude death rate reached a low of 0.38 percent of the population in the mid-1980s. As Alaska’s overall population has aged since then, the rate has increased. In 2015, 0.58 percent of the population died.

From 1980 to 1981, 5.7 Alaskans were born for every person who died during the same period. Ten years ago, from 2004 to 2005, the births-to-deaths ratio was 3.3. From 2014 to 2015, the ratio was 2.6. The declining direction of the ratio reflects Alaska’s aging population. (See Figure 1.3.)

Overall, Alaska added 36,951 people through natural increase between 2010 and 2015.

“Life expectancy at birth” for a given year is the number of years a person would live if that person lived an entire life with that year’s age-specific rates of mortality, which are the number of deaths per population by age.

According to the National Center for Health Statistics, the national life expectancy at birth increased steadily from 73.7 in 1980 to 78.7 in 2010. Based on Alaska death records and annual population estimates, Alaska’s statewide life expectancy increased from 72.1 in 1980 to 78.1 in 2010. The life expectancy at birth for Alaska Natives and American Indians increased from 65.7 in 1980 to 70.7 in 2010.

Migration

As shown in Figure 1.2 and Table 1.2, net migration can vary widely from year to year. Tens of thousands of people move both to and from the state each year, and relatively small fluctuations in the number moving in or out can yield a large net gain or loss.

In recent years, fluctuations in net migration for Alaska have often been attributed to economic trends and events, but troop movements are significant as well. Much of the migration to and from Alaska depends on the stationing of military personnel, which is tied to historical events and planning at the federal level.

The majority of people living in Alaska are migrants to the state — as of the 2010-2014 U.S. Census Bureau’s American Community Survey, 41 percent of Alaskans were born here. Regionally, these proportions varied from a low of 21 percent in the Aleutians West Census Area (home to a large fish processing industry) to a high of 97 percent in the Kusilvak Census Area. Generally, almost 60 percent of Alaskans residing in places other than the state’s five most populous boroughs were born in Alaska versus 36 percent in Anchorage, 33 percent in Fairbanks North Star Borough, and roughly 40 percent for the Matanuska-Susitna Borough, Kenai Peninsula Borough, and City and Borough of Juneau.

Based on 2010 to 2014 data from the American Community Survey, 7 percent of Alaskans were foreign-born. According to the 2000 Census, 6 percent of Alaskans were foreign-born. For the U.S., 13 percent were foreign-born in 2014, up from 11 percent in 2000.

At the state and national level, data to track annual migration are available from the Internal Revenue Service’s Tax Statistics, and these show that Alaska has among the highest rates of gross migration (in-migration plus out-migration) in the nation. Only the District of Columbia’s 18 percent gross migration rate was higher than Alaska’s 12 percent for 2013 to 2014 (the latest data available). The state with the next-highest rate was Wyoming at 11 percent.

The states that exchange the most people with Alaska

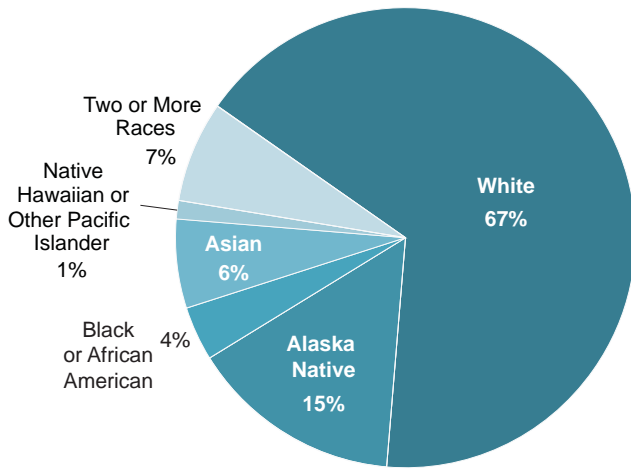
Table 1.2
Migration to and from Alaska, 1980 to 2015

| July 1 to June 30 | Net Migration | In Migration | Out Migration | Gross Migration |
|-------------------|---------------|--------------|---------------|-----------------|
| 1980-81 | 6,326 | 47,210 | 40,884 | 88,094 |
| 1981-82 | 20,992 | 60,035 | 39,043 | 99,078 |
| 1982-83 | 24,934 | 64,682 | 39,748 | 104,430 |
| 1983-84 | 14,526 | 57,992 | 43,466 | 101,458 |
| 1984-85 | 9,206 | 54,986 | 45,780 | 100,766 |
| 1985-86 | -3,646 | 53,451 | 57,097 | 110,548 |
| 1986-87 | -19,245 | 38,085 | 57,330 | 95,415 |
| 1987-88 | -15,710 | 34,393 | 50,103 | 84,496 |
| 1988-89 | -5,480 | 41,185 | 46,665 | 87,850 |
| 1989-90 | 4,637 | 42,777 | 38,140 | 80,917 |
| 1990-91 | 6,310 | 44,890 | 38,580 | 83,470 |
| 1991-92 | 8,138 | 51,432 | 43,294 | 94,726 |
| 1992-93 | 1,314 | 47,171 | 45,857 | 93,028 |
| 1993-94 | -4,840 | 42,329 | 47,169 | 89,498 |
| 1994-95 | -6,980 | 38,999 | 45,979 | 84,978 |
| 1995-96 | -3,741 | 40,282 | 44,023 | 84,305 |
| 1996-97 | -3,001 | 41,476 | 44,477 | 85,953 |
| 1997-98 | 145 | 40,974 | 40,829 | 81,803 |
| 1998-99 | -2,337 | 39,885 | 42,222 | 82,107 |
| 1999-00 | -927 | 39,149 | 40,076 | 79,225 |
| 2000-01 | -2,676 | 35,226 | 37,902 | 73,128 |
| 2001-02 | 2,196 | 38,746 | 36,550 | 75,296 |
| 2002-03 | 819 | 38,564 | 37,745 | 76,309 |
| 2003-04 | 2,948 | 40,877 | 37,929 | 78,806 |
| 2004-05 | 292 | 38,288 | 37,996 | 76,284 |
| 2005-06 | -56 | 40,068 | 40,124 | 80,192 |
| 2007-07 | -2,023 | 38,237 | 40,260 | 78,497 |
| 2007-08 | -1,111 | 40,518 | 41,629 | 82,147 |
| 2008-09 | 3,009 | 43,147 | 40,138 | 83,285 |
| 2009-10 | 8,554 | 45,427 | 36,873 | 82,300 |
| 2010-11 | 1,262 | 41,505 | 40,243 | 81,748 |
| 2011-12 | 1,250 | 47,647 | 46,397 | 94,044 |
| 2012-13 | -2,346 | 50,343 | 52,689 | 103,032 |
| 2013-14 | -6,739 | 41,919 | 48,658 | 90,577 |
| 2014-15 | -6,774 | 39,549 | 46,323 | 85,872 |

Source: Alaska Department of Labor and Workforce Development, Research and Analysis Section

typically have large populations or are close geographically. From 2013 to 2014, Washington sent and received the highest number of movers to and from Alaska, followed by California and Texas.

Figure 1.4
Proportion of Alaska Residents by Race
(Alone), 2015



Sources: Alaska Department of Labor and Workforce Development, Research and Analysis Section

Race and Ethnicity Categories

Race and ethnicity categories used by the U.S. Census Bureau have changed over the decades, and this affects the comparability of data from different years. Major race groupings in 2010 Census data are white, black or African American, American Indian or Alaska Native, Asian, and Native Hawaiian or Other Pacific Islander. Individuals may write in their race under “some other race,” and those responses are then assigned one of the major race categories. Tables noted “modified race data” in this publication include the adjustment for some other race, and those without that note do not have the adjustment. There is also an ethnic categorization, which is separate from race, where people can report Hispanic origin.

Because the American Indian population in Alaska is quite small relative to the Alaska Native population, the term “Alaska Native” is used in this publication to refer to “American Indian or Alaska Native.” “Native Hawaiian or Other Pacific Islander” is sometimes shortened to “Hawaiian or Pacific Islander” or just “Pacific Islander.”

The 2000 Census brought a fundamental change to race and ethnicity data collection by giving respondents the option to report more than one race. As a result, race data from

Table 1.3
Alaska Native or American Indian and Total Population, Alaska, 1910 to 2015

| Year | Alaska Native or American Indian Alone | Percent | Alaska Native or American Indian* | Percent | Alaska Native or American-Indian Alone or in Comb. | Percent | Total Population |
|------|--|---------|-----------------------------------|---------|--|---------|------------------|
| 1910 | - | - | 25,331 | 39.4 | - | - | 64,356 |
| 1920 | - | - | 26,558 | 48.3 | - | - | 55,036 |
| 1929 | - | - | 29,983 | 50.6 | - | - | 59,278 |
| 1939 | - | - | 32,458 | 44.8 | - | - | 72,524 |
| 1950 | - | - | 33,863 | 26.3 | - | - | 128,643 |
| 1960 | - | - | 42,522 | 18.8 | - | - | 226,167 |
| 1970 | - | - | 50,605 | 16.7 | - | - | 302,583 |
| 1980 | - | - | 64,103 | 16.0 | - | - | 401,851 |
| 1990 | - | - | 85,698 | 15.6 | - | - | 550,043 |
| 2000 | 98,743 | 15.8 | 107,929 | 17.2 | 119,499 | 19.1 | 626,932 |
| 2010 | 106,267 | 15.0 | 120,433 | 17.0 | 139,761 | 19.7 | 710,231 |
| 2011 | 107,793 | 14.9 | 122,142 | 16.9 | 141,817 | 19.6 | 723,133 |
| 2012 | 108,366 | 14.8 | 122,725 | 16.8 | 142,370 | 19.5 | 731,630 |
| 2013 | 109,394 | 14.9 | 123,575 | 16.8 | 143,175 | 19.4 | 736,616 |
| 2014 | 109,865 | 14.9 | 124,104 | 16.8 | 143,749 | 19.5 | 737,354 |
| 2015 | 110,157 | 14.9 | 124,500 | 16.9 | 144,274 | 19.6 | 737,625 |

Note: Modified race data.

*Estimates for 2000 and 2010 through 2015 are bridged-race estimates.

Sources: Alaska Department of Labor and Workforce Development, Research and Analysis Section; and U.S. Census Bureau

the 2000 and 2010 censuses are far more complex and not directly comparable to race data from previous censuses.

Because data for births, deaths, and many other events and groups are not yet collected on a multi-race basis, “bridged-race” race estimates, which assign all individuals to a single race group, are provided by the Alaska Department of Labor and Workforce Development as well as the National Center for Health Statistics.

Historical Alaska Native Population

Few reliable data are available on the overall size of the Alaska Native population before the 1929 territorial census. In 1929, 29,983 Alaska Natives made up 51 percent of Alaska’s population. Although the Alaska Native population has grown rapidly since 1929, the non-Native population has grown more rapidly. (See Table 1.3.)

Current Race and Ethnic Composition

The Alaska Native and American Indian (alone) population in Alaska was 110,157 in 2015, or 15 percent of the state’s total, a bigger proportion than any other state in the U.S. (For comparison, Hawaii’s population is 10 percent Native Hawaiian or other Pacific Islander (alone), and New Mexico and South Dakota are each 9 percent American Indian (alone), according to the U.S. Census Bureau’s 2010-2014 American Community Survey.)

Alaska’s white (alone) population was 491,143, or 67 percent of the state. (See Figure 1.4 and Table 1.4 for other groups.) Alaska had 50,850 Hispanic residents in 2015, which was 7 percent of the state total. People of Hispanic origin can be of any race.

Population by Age

The size of each age group is affected by aging along with births, deaths, and migration. Alaska’s age structure as of 2015 is shown in Table 1.11 and Figures 1.5, 1.6, and 1.7. Other than aging, the largest factor affecting Alaska’s age structure is migration, which is particularly high for 18-to-35-year-olds and their children younger than school age.

While Alaska’s total population increased 4 percent between the 2010 Census and July 2015, children under the age of 5 decreased from 53,996 to 53,054. This age group currently makes up 7 percent of the state’s population. From its high in 1993, the number of young children steadily declined to a low of 47,270 in 2001 but rose steadily over the next nine years. The number of children in this age group is volatile because migration has a large effect on it.

The population aged 5 to 13 are of elementary and middle school age. This group grew by 4 percent between 2010 and

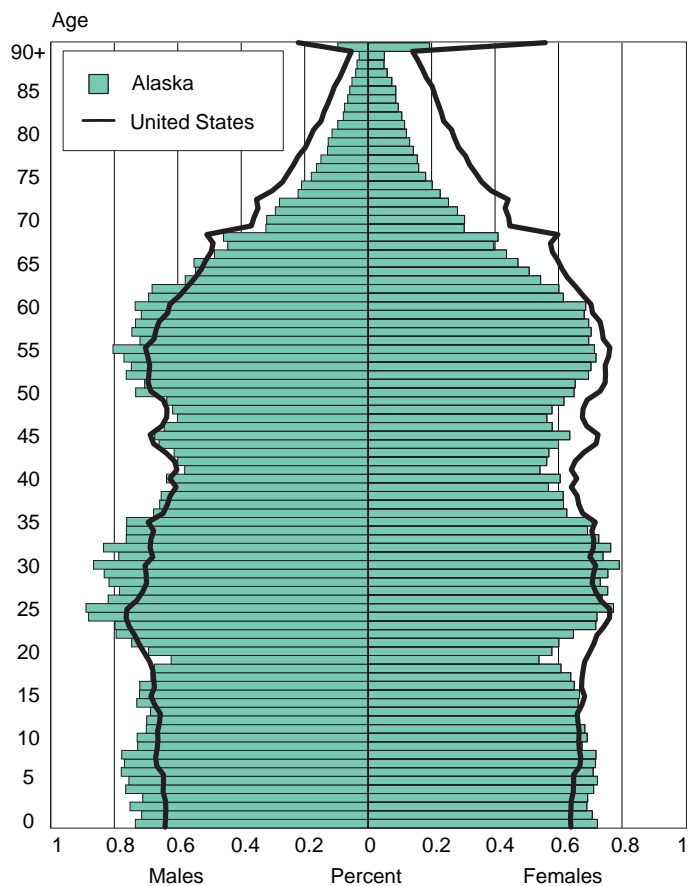
2015, from 91,587 to 94,804, and made up 13 percent of the state population in 2015.

The number of youths aged 14 to 17 has declined 3 percent since 2010, from 41,795 to 40,340 in 2015. Teens in this age group made up 5 percent of the state in 2015. In general, teenagers are less subject to changes in migration flows than younger age groups.

The 18-to-24 age group — which has very high rates of migration for school and work — has decreased 5 percent since 2010, from 74,881 to 70,928 in 2015. People in this age group made up 10 percent of the state’s population that year. In general, migration yields a net loss of people at ages 18 and 19, followed by a net gain for ages 20 to 24.

The population aged 25 to 34 is composed of young adults in prime ages for forming families and households. People in this age group contribute heavily to the number of children

Figure 1.5
Alaska and U.S. Population by Age and Sex, 2015 (Percent Distribution)



Sources: Alaska Department of Labor and Workforce Development, Research and Analysis Section; and U.S. Census Bureau

under age 5. In 2015, 16 percent (115,194) of Alaska residents were 25 to 34 years old. In 2010, 15 percent (103,125) of Alaska residents were in this age group. Alaska typically has strong net migration gains of people aged 25 to 34.

The size of Alaska’s population aged 35 to 44 decreased slightly between 2010 and 2015. The group was 12 percent (91,829) of the state total in 2015, down from 13 percent (92,974) in 2010.

The 45-to-54 age group still includes some baby boomers (born between 1946 and 1964). This segment of the population decreased from 16 percent (111,026) of the state in 2010 to 13 percent in 2015. As of 2015, an estimated 97,910 Alaskans were in this age group.

Despite the typical net migration losses of people aged 55 to 64, this group has grown sharply over the past five years as baby boomers aged. The state had 98,713 in this group (13 percent of the state total) in 2015, up from 85,909 (12 percent) in 2010.

Alaskans aged 65 and older numbered 74,853 in 2015, and the size of Alaska’s population aged 55 to 64 suggests the number of seniors will increase dramatically over the next decade. The 65-plus group increased from 8 percent of the state total in 2010 to 10 percent in 2015.

The growth rate between 2010 and 2015 for seniors in Alaska was higher than any other state — but as of 2015, Alaska’s percentage of senior citizens remained the smallest of any state. (In the U.S. as a whole, 15 percent were 65 or older in 2015.)

Median Age

Alaska’s population is younger than the national average but the gap is narrowing, largely due to the aging of Alaska’s large baby boomer population. (See Figure 1.5.) The U.S. median age in 2015 was 37.8, and the median age for Alaska was 34.5. Alaska had the fourth-youngest population in the U.S. after Utah (30.7), the District of Columbia (33.8), and Texas (34.3). In 2010, the U.S. median age was 37.2, and Alaska’s was 33.8.

Table 1.4
Alaska Population by Race and Ethnicity, 2010 to 2015

| | April 1, 2010 | July 1, 2011 | July 1, 2012 | July 1, 2013 | July 1, 2014 | July 1, 2015 | Change 2010-2015 | Change 2014-2015 |
|--|------------------|-----------------|-----------------|-----------------|-----------------|-----------------|---------------------|---------------------|
| Total Population | 710,231 | 723,133 | 731,630 | 736,616 | 737,354 | 737,625 | 27,394 | 271 |
| Total Responses | 763,944 | 778,296 | 787,331 | 792,588 | 794,008 | 795,372 | 31,428 | 1,364 |
| White | | | | | | | | |
| White Alone | 483,871 | 490,347 | 494,001 | 495,390 | 493,589 | 491,143 | 7,272 | -2,446 |
| White (bridged-race estimate) | 507,468 | 514,437 | 518,264 | 519,770 | 518,225 | 516,146 | 8,678 | -2,079 |
| White Alone or in Combination | 527,708 | 535,225 | 539,260 | 540,811 | 539,531 | 537,887 | 10,179 | -1,644 |
| Alaska Native and American Indian | | | | | | | | |
| Alaska Native and American Indian Alone | 106,267 | 107,793 | 108,366 | 109,394 | 109,865 | 110,157 | 3,890 | 292 |
| Alaska Native and American Indian (bridged-race estimate) | 120,428 | 122,142 | 122,725 | 123,575 | 124,104 | 124,500 | 4,072 | 396 |
| Alaska Native and American Indian Alone or in Combination | 139,761 | 141,817 | 142,370 | 143,175 | 143,749 | 144,274 | 4,513 | 525 |
| Black or African American | | | | | | | | |
| Black or African American Alone | 24,442 | 25,632 | 27,468 | 28,214 | 28,112 | 28,145 | 3,703 | 33 |
| Black or African American (bridged-race estimate) | 31,401 | 32,988 | 35,003 | 35,846 | 35,976 | 36,262 | 4,861 | 286 |
| Black or African American Alone or in Combination | 34,168 | 35,814 | 37,852 | 38,750 | 38,886 | 39,305 | 5,137 | 419 |
| Asian and Pacific Islander | | | | | | | | |
| Asian and Pacific Islander Alone | 46,545 | 48,971 | 50,945 | 52,603 | 54,126 | 55,614 | 9,069 | 1,488 |
| Asian and Pacific Islander (bridged-race estimate) | 50,934 | 53,566 | 55,638 | 57,425 | 59,049 | 60,717 | 9,783 | 1,668 |
| Asian and Pacific Islander Alone or in Combination | 62,307 | 65,440 | 67,849 | 69,852 | 71,842 | 73,906 | 11,599 | 2,064 |
| Native Hawaiian and Other Pacific Islander Alone | 7,662 | 8,138 | 8,616 | 8,920 | 9,216 | 9,554 | 1,892 | 338 |
| Native Hawaiian and Other Pacific Islander Alone or in Combination | 11,362 | 11,989 | 12,581 | 12,940 | 13,313 | 13,775 | 2,413 | 462 |
| Two or more races | 49,106 | 50,390 | 50,850 | 51,015 | 51,662 | 52,566 | 3,460 | 904 |
| Ethnicity | | | | | | | | |
| Hispanic or Latino (of any race) | 39,252 | 42,358 | 45,781 | 48,323 | 49,792 | 50,850 | 11,598 | 1,058 |

Notes: Modified race data. “Total Responses” are greater than total population because individuals may report more than one race group.

Source: Alaska Department of Labor and Workforce Development, Research and Analysis Section; and U.S. Census Bureau

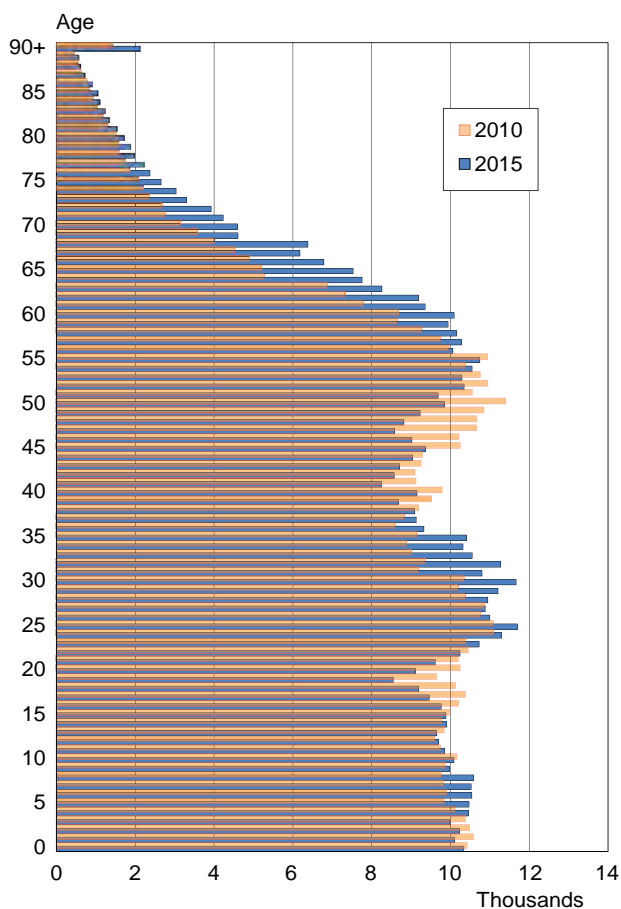
By race, the median ages of Alaskans in 2015 were: 38.0 for white alone, 29.1 for Alaska Native alone, 30.3 for African American alone, 35.6 for Asian alone, 26.1 for Hawaiian and Pacific Islander alone, and 18.5 for people of two or more races. The median age for people of Hispanic origin was 25.9.

The Alaska Native population is generally younger because of higher birth rates and a smaller baby boomer population. The Hawaiian and Pacific Islander and Hispanic populations are younger due to a combination of higher birth rates and the age and year of migration for the share that moved to Alaska. The African American population is relatively young because a larger share is military. The very low median age for those who are of two or more races is the result of an increasing proportion of multiracial children, and perhaps a greater tendency of younger multiracial Alaskans to identify as such.

Voting Age Population

As of July 1, 2015, the voting age population (those 18 and

Figure 1.6
Alaska Population by Age, 2010 and 2015



Sources: Alaska Department of Labor and Workforce Development, Research and Analysis Section; and U.S. Census Bureau

over) in Alaska totaled 549,427. Of that population, the white alone group was 386,152 (70 percent), Alaska Native alone was 74,454 (14 percent), Asian alone made up 34,882 (6 percent), African Americans were 21,058 (4 percent), Hawaiians or Pacific Islanders were 6,085 (1 percent), and people of two or more races totaled 26,796 (5 percent). An estimated 33,263 (6 percent) voting-aged Alaskans were of Hispanic origin.

Dependency

Dependency ratios are ratios of the working-age population (ages 18 to 64) to the young and old largely nonworking populations. In 2015, for every 100 Alaskans aged 18 to 64, there were 40 Alaskans under 18 (unchanged from 2010) and 16 Alaskans over 65 (up from 12 in 2010). For comparison, the U.S. had 37 children and 24 seniors for every 100 people of working age in 2015.

Male-to-Female Ratio

Alaska had 107.5 males for every 100 females in 2015 — much higher than the national ratio of 97 to 100, but down from 2010's ratio of 108.5 to 100.

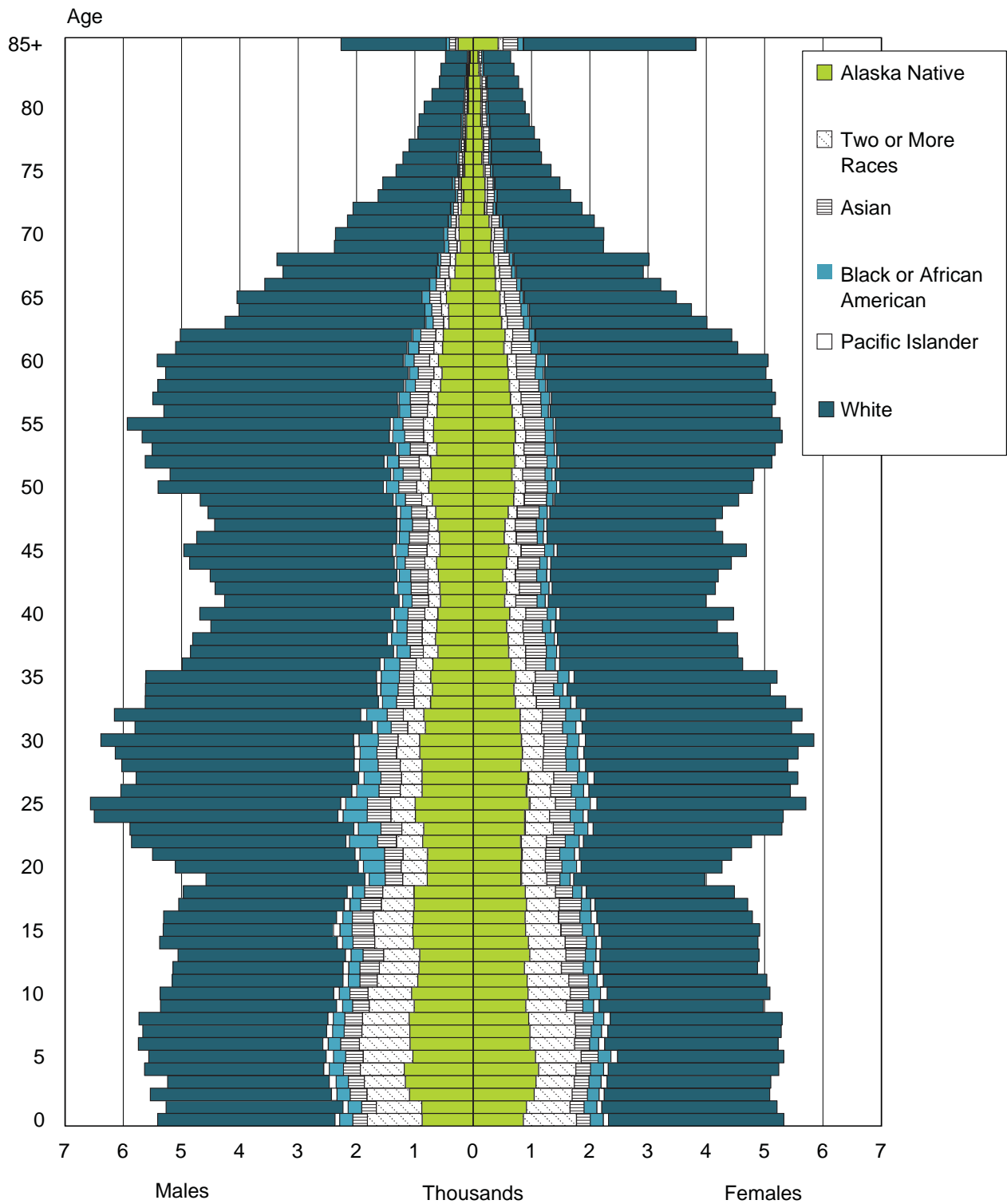
By race, the male-to-female ratio was 111 for white alone, 101 for Alaska Native alone, 129 for African American alone, 87 for Asian alone, and 99 for Hawaiian or Pacific Islander alone. The particularly high male-to-female ratio for African Americans reflects the larger share of Alaska's African American population in the military. The low male-to-female ratio for Asian Alaskans reflects a nationwide phenomenon (91 males for every 100 females) and is at least partly attributable to U.S. immigration policy that favors family reunification. Alaska's male-to-female ratio for people of Hispanic origin was 109 in 2015.

States with younger populations tend to have higher male-to-female ratios, in part because the ratio at birth is typically around 105 and also because life expectancy is generally lower for males, so the ratio decreases at higher ages. Employment can also affect male-to-female ratios for certain areas, such as the military, fishing, and mining in Alaska. Other states that had high ratios as of the Census Bureau's 2015 population estimates were North Dakota (106), Wyoming (104), and Hawaii (103).

While Alaska had very large male-to-female ratios at some points in its history (including the gold rush era and during large military buildups) and continues to have the highest ratio in the nation, the difference is sometimes exaggerated. Some communities in Alaska tend to be heavily male due to local industries, but most have ratios close to the U.S. average.

As shown in Figure 1.8, the highest ratio of males to females was for the 20-to-24-year-old group, at 120. Ages 65-69 were second with a ratio of 112. The relatively high male-to-

Figure 1.7
 Alaska Population by Age, Race (Alone), and Sex, 2015



Sources: Alaska Department of Labor and Workforce Development, Research and Analysis Section

female ratio at higher ages in Alaska is because more young adult males moved to the state in the 1970s and 1980s than females.

In 2010, 26,352 people (4 percent of the state) lived in group quarters. In 2015, 28,110 people (4 percent) lived in group quarters.

Alaska Households and Living Arrangements

The Census Bureau counts all people as living either in a household or a “group quarters” facility (a shared living facility such as a dormitory or prison). Any occupied housing unit is a household. The Census Bureau defines a housing unit as a house, an apartment, a mobile home, a group of rooms, or a single room that is occupied (or if vacant, is intended for occupancy) as separate living quarters.

The number of households in Alaska increased by 6,126, or 2 percent, from 2010 to 2015. The number of people per household increased slightly, from 2.65 to 2.69. Among Alaska households, 36 percent, or 93,793, had one or more people under 18 in 2015, and 54,433, or 21 percent, had one or more people 65 or older. (See Table 1.5.)

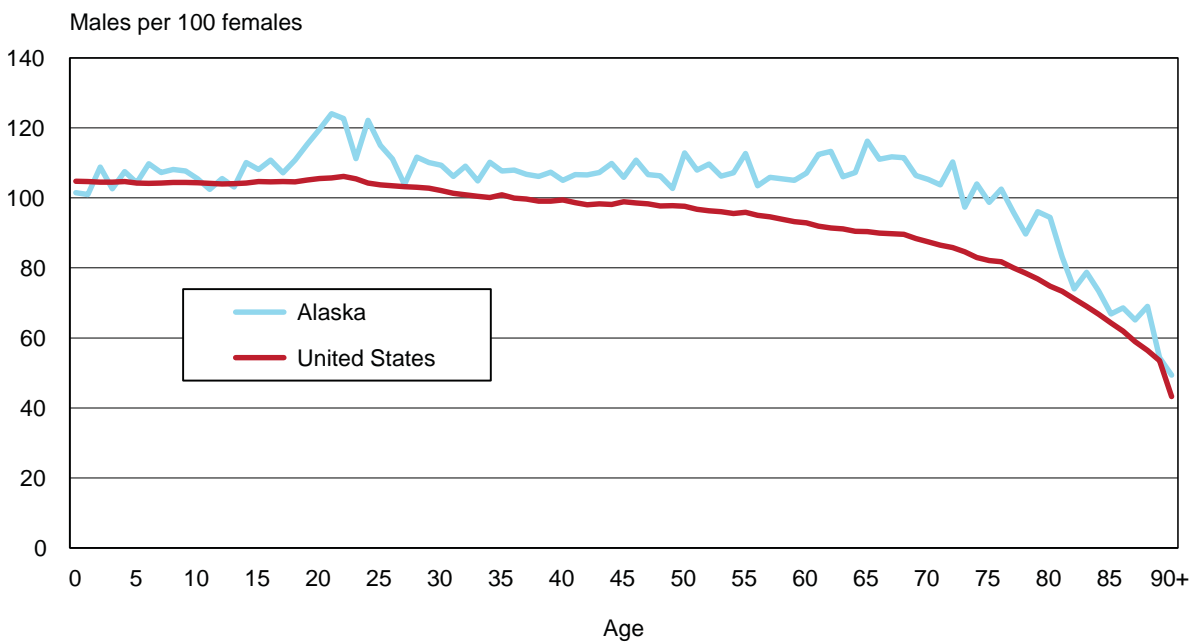
All people not living in households live in group quarters, which are in two categories: 1) institutionalized (such as prisons, nursing homes, psychiatric hospitals, and residential treatment facilities) and 2) others in group quarters (such as group homes, college dorms, military barracks, fish processing and logging camp bunkhouses, and emergency shelters).

Table 1.5
Alaska Households with Youths and Seniors, 2010 and 2015

| | April 1, 2010 | July 1, 2015 | Change 2010-2015 |
|--|---------------|--------------|------------------|
| Household population | 683,879 | 709,515 | 25,636 |
| Total households | 258,058 | 264,184 | 6,126 |
| Households with one or more people younger than 18 | 93,873 | 93,793 | -80 |
| Households with one or more people age 65 or older | 41,303 | 54,433 | 13,130 |
| Persons per household | 2.65 | 2.69 | 0.04 |
| Group quarters population | 26,352 | 28,110 | 1,758 |

Sources: Alaska Department of Labor and Workforce Development, Research and Analysis Section; and U.S. Census Bureau

Figure 1.8
Males Per 100 Females by Age, Alaska and the U.S., 2015



Sources: Alaska Department of Labor and Workforce Development, Research and Analysis Section; and U.S. Census Bureau

Table 1.6
Alaska Population by Age and Sex, April 1, 2010

| Age | Total | Male | Female | Age | Total | Male | Female | Age | Total | Male | Female |
|---------|--------|-------|--------|-----|--------|-------|--------|------------------------------|----------------|----------------|----------------|
| Under 1 | 10,828 | 5,590 | 5,238 | 45 | 10,629 | 5,528 | 5,101 | 90 | 361 | 130 | 231 |
| 1 | 11,006 | 5,687 | 5,319 | 46 | 10,591 | 5,558 | 5,033 | 91 | 258 | 86 | 172 |
| 2 | 10,897 | 5,665 | 5,232 | 47 | 11,097 | 5,748 | 5,349 | 92 | 216 | 72 | 144 |
| 3 | 10,777 | 5,486 | 5,291 | 48 | 11,102 | 5,722 | 5,380 | 93 | 150 | 40 | 110 |
| 4 | 10,488 | 5,468 | 5,020 | 49 | 11,307 | 5,842 | 5,465 | 94 | 129 | 32 | 97 |
| 5 | 10,177 | 5,158 | 5,019 | 50 | 11,923 | 6,314 | 5,609 | 95+ | 324 | 83 | 241 |
| 6 | 10,252 | 5,248 | 5,004 | 51 | 10,975 | 5,685 | 5,290 | Total | 710,231 | 369,628 | 340,603 |
| 7 | 10,155 | 5,178 | 4,977 | 52 | 11,415 | 6,001 | 5,414 | Ages | Total | Male | Female |
| 8 | 10,096 | 5,217 | 4,879 | 53 | 11,201 | 5,715 | 5,486 | 0-4 | 53,996 | 27,896 | 26,100 |
| 9 | 10,207 | 5,237 | 4,970 | 54 | 10,786 | 5,573 | 5,213 | 5-9 | 50,887 | 26,038 | 24,849 |
| 10 | 10,537 | 5,512 | 5,025 | 55 | 11,408 | 5,931 | 5,477 | 10-14 | 50,816 | 26,147 | 24,669 |
| 11 | 10,073 | 5,158 | 4,915 | 56 | 10,303 | 5,452 | 4,851 | 15-19 | 52,141 | 27,179 | 24,962 |
| 12 | 9,913 | 5,052 | 4,861 | 57 | 10,080 | 5,336 | 4,744 | 20-24 | 54,419 | 29,706 | 24,713 |
| 13 | 10,177 | 5,210 | 4,967 | 58 | 9,537 | 5,033 | 4,504 | 25-29 | 55,419 | 29,307 | 26,112 |
| 14 | 10,116 | 5,215 | 4,901 | 59 | 8,643 | 4,642 | 4,001 | 30-34 | 47,706 | 24,861 | 22,845 |
| 15 | 10,324 | 5,254 | 5,070 | 60 | 8,686 | 4,693 | 3,993 | 35-39 | 45,833 | 23,731 | 22,102 |
| 16 | 10,578 | 5,424 | 5,154 | 61 | 7,785 | 4,191 | 3,594 | 40-44 | 47,141 | 24,646 | 22,495 |
| 17 | 10,777 | 5,647 | 5,130 | 62 | 7,325 | 3,931 | 3,394 | 45-49 | 54,726 | 28,398 | 26,328 |
| 18 | 10,498 | 5,470 | 5,028 | 63 | 6,879 | 3,665 | 3,214 | 50-54 | 56,300 | 29,288 | 27,012 |
| 19 | 9,964 | 5,384 | 4,580 | 64 | 5,263 | 2,751 | 2,512 | 55-59 | 49,971 | 26,394 | 23,577 |
| 20 | 10,628 | 5,828 | 4,800 | 65 | 5,210 | 2,764 | 2,446 | 60-64 | 35,938 | 19,231 | 16,707 |
| 21 | 10,577 | 5,824 | 4,753 | 66 | 4,893 | 2,603 | 2,290 | 65-69 | 22,202 | 11,714 | 10,488 |
| 22 | 10,859 | 5,880 | 4,979 | 67 | 4,523 | 2,395 | 2,128 | 70-74 | 13,148 | 6,662 | 6,486 |
| 23 | 10,787 | 5,877 | 4,910 | 68 | 3,993 | 2,053 | 1,940 | 75-79 | 8,892 | 4,150 | 4,742 |
| 24 | 11,568 | 6,297 | 5,271 | 69 | 3,583 | 1,899 | 1,684 | 80-84 | 5,985 | 2,620 | 3,365 |
| 25 | 11,575 | 6,176 | 5,399 | 70 | 3,150 | 1,611 | 1,539 | 85-89 | 3,273 | 1,217 | 2,056 |
| 26 | 11,198 | 5,957 | 5,241 | 71 | 2,759 | 1,407 | 1,352 | 90-94 | 1,114 | 360 | 754 |
| 27 | 11,311 | 5,931 | 5,380 | 72 | 2,674 | 1,381 | 1,293 | 16+ | 544,208 | 284,293 | 259,915 |
| 28 | 10,766 | 5,751 | 5,015 | 73 | 2,354 | 1,187 | 1,167 | 18+ | 522,853 | 273,222 | 249,631 |
| 29 | 10,569 | 5,492 | 5,077 | 74 | 2,211 | 1,076 | 1,135 | 65+ | 54,938 | 26,806 | 28,132 |
| 30 | 10,733 | 5,683 | 5,050 | 75 | 2,085 | 997 | 1,088 | 95+ | 324 | 83 | 241 |
| 31 | 9,453 | 4,949 | 4,504 | 76 | 1,869 | 905 | 964 | Total | Male | Female | |
| 32 | 9,628 | 5,000 | 4,628 | 77 | 1,756 | 804 | 952 | Median Age | 33.8 | 33.6 | 34.1 |
| 33 | 9,012 | 4,587 | 4,425 | 78 | 1,595 | 716 | 879 | Males Per 100 Females | | | 108.5 |
| 34 | 8,880 | 4,642 | 4,238 | 79 | 1,587 | 728 | 859 | Youth Dependency (<18/18-64) | | | 40.0 |
| 35 | 9,396 | 4,957 | 4,439 | 80 | 1,514 | 698 | 816 | Aged Dependency (65+/18-64) | | | 11.7 |
| 36 | 8,606 | 4,390 | 4,216 | 81 | 1,306 | 581 | 725 | | | | |
| 37 | 8,820 | 4,530 | 4,290 | 82 | 1,185 | 520 | 665 | | | | |
| 38 | 9,190 | 4,788 | 4,402 | 83 | 1,044 | 433 | 611 | | | | |
| 39 | 9,821 | 5,066 | 4,755 | 84 | 936 | 388 | 548 | | | | |
| 40 | 10,112 | 5,273 | 4,839 | 85 | 842 | 297 | 545 | | | | |
| 41 | 9,118 | 4,801 | 4,317 | 86 | 789 | 312 | 477 | | | | |
| 42 | 9,097 | 4,774 | 4,323 | 87 | 632 | 235 | 397 | | | | |
| 43 | 9,250 | 4,803 | 4,447 | 88 | 552 | 213 | 339 | | | | |
| 44 | 9,564 | 4,995 | 4,569 | 89 | 458 | 160 | 298 | | | | |

Sources: Alaska Department of Labor and Workforce Development, Research and Analysis Section; and U.S. Census Bureau

Table 1.7
Alaska Population by Age and Sex, July 1, 2011

| Age | Total | Male | Female | Age | Total | Male | Female | Age | Total | Male | Female |
|---------|--------|-------|--------|-----|--------|-------|--------|--------------|----------------|----------------|----------------|
| Under 1 | 11,443 | 5,904 | 5,539 | 45 | 10,088 | 5,162 | 4,926 | 90 | 352 | 131 | 221 |
| 1 | 10,747 | 5,413 | 5,334 | 46 | 9,845 | 5,184 | 4,661 | 91 | 350 | 116 | 234 |
| 2 | 11,169 | 5,905 | 5,264 | 47 | 10,365 | 5,366 | 4,999 | 92 | 223 | 71 | 152 |
| 3 | 10,938 | 5,646 | 5,292 | 48 | 10,941 | 5,686 | 5,255 | 93 | 173 | 48 | 125 |
| 4 | 11,042 | 5,628 | 5,414 | 49 | 11,038 | 5,665 | 5,373 | 94 | 118 | 35 | 83 |
| 5 | 10,712 | 5,602 | 5,110 | 50 | 12,038 | 6,316 | 5,722 | 95+ | 415 | 111 | 304 |
| 6 | 10,229 | 5,199 | 5,030 | 51 | 11,060 | 5,773 | 5,287 | Total | 723,133 | 375,797 | 347,336 |
| 7 | 10,325 | 5,223 | 5,102 | 52 | 11,123 | 5,814 | 5,309 | | | | |
| 8 | 10,277 | 5,357 | 4,920 | 53 | 11,278 | 5,805 | 5,473 | | | | |
| 9 | 10,010 | 5,046 | 4,964 | 54 | 11,106 | 5,739 | 5,367 | Ages | Total | Male | Female |
| 10 | 10,455 | 5,405 | 5,050 | 55 | 11,239 | 5,837 | 5,402 | 0-4 | 55,339 | 28,496 | 26,843 |
| 11 | 10,448 | 5,402 | 5,046 | 56 | 10,785 | 5,503 | 5,282 | 5-9 | 51,553 | 26,427 | 25,126 |
| 12 | 10,159 | 5,210 | 4,949 | 57 | 10,398 | 5,419 | 4,979 | 10-14 | 51,348 | 26,384 | 24,964 |
| 13 | 10,049 | 5,069 | 4,980 | 58 | 10,159 | 5,479 | 4,680 | 15-19 | 50,688 | 26,413 | 24,275 |
| 14 | 10,237 | 5,298 | 4,939 | 59 | 9,394 | 4,936 | 4,458 | 20-24 | 55,253 | 30,106 | 25,147 |
| 15 | 10,091 | 5,187 | 4,904 | 60 | 9,091 | 4,850 | 4,241 | 25-29 | 57,319 | 30,366 | 26,953 |
| 16 | 10,269 | 5,328 | 4,941 | 61 | 8,250 | 4,458 | 3,792 | 30-34 | 50,532 | 26,240 | 24,292 |
| 17 | 10,425 | 5,360 | 5,065 | 62 | 7,992 | 4,228 | 3,764 | 35-39 | 44,833 | 23,246 | 21,587 |
| 18 | 10,125 | 5,394 | 4,731 | 63 | 6,949 | 3,664 | 3,285 | 40-44 | 47,156 | 24,579 | 22,577 |
| 19 | 9,778 | 5,144 | 4,634 | 64 | 7,134 | 3,803 | 3,331 | 45-49 | 52,277 | 27,063 | 25,214 |
| 20 | 10,762 | 6,004 | 4,758 | 65 | 5,346 | 2,893 | 2,453 | 50-54 | 56,605 | 29,447 | 27,158 |
| 21 | 11,240 | 6,231 | 5,009 | 66 | 5,000 | 2,605 | 2,395 | 55-59 | 51,975 | 27,174 | 24,801 |
| 22 | 11,034 | 5,957 | 5,077 | 67 | 4,788 | 2,540 | 2,248 | 60-64 | 39,416 | 21,003 | 18,413 |
| 23 | 11,133 | 5,925 | 5,208 | 68 | 4,625 | 2,441 | 2,184 | 65-69 | 23,698 | 12,464 | 11,234 |
| 24 | 11,084 | 5,989 | 5,095 | 69 | 3,939 | 1,985 | 1,954 | 70-74 | 14,417 | 7,398 | 7,019 |
| 25 | 12,162 | 6,581 | 5,581 | 70 | 3,673 | 1,949 | 1,724 | 75-79 | 9,282 | 4,405 | 4,877 |
| 26 | 11,389 | 6,032 | 5,357 | 71 | 3,045 | 1,558 | 1,487 | 80-84 | 6,336 | 2,790 | 3,546 |
| 27 | 11,094 | 5,745 | 5,349 | 72 | 2,767 | 1,441 | 1,326 | 85-89 | 3,475 | 1,284 | 2,191 |
| 28 | 11,727 | 6,212 | 5,515 | 73 | 2,558 | 1,277 | 1,281 | 90-94 | 1,216 | 401 | 815 |
| 29 | 10,947 | 5,796 | 5,151 | 74 | 2,374 | 1,173 | 1,201 | 16+ | 554,802 | 289,303 | 265,499 |
| 30 | 11,371 | 6,042 | 5,329 | 75 | 2,147 | 1,080 | 1,067 | 18+ | 534,108 | 278,615 | 255,493 |
| 31 | 10,348 | 5,307 | 5,041 | 76 | 2,031 | 975 | 1,056 | 65+ | 58,839 | 28,853 | 29,986 |
| 32 | 9,958 | 5,233 | 4,725 | 77 | 1,828 | 859 | 969 | 95+ | 415 | 111 | 304 |
| 33 | 9,519 | 4,914 | 4,605 | 78 | 1,710 | 763 | 947 | | | | |
| 34 | 9,336 | 4,744 | 4,592 | 79 | 1,566 | 728 | 838 | | | | |
| 35 | 9,311 | 4,964 | 4,347 | 80 | 1,500 | 699 | 801 | | | | |
| 36 | 8,926 | 4,549 | 4,377 | 81 | 1,477 | 661 | 816 | | | | |
| 37 | 8,723 | 4,527 | 4,196 | 82 | 1,259 | 554 | 705 | | | | |
| 38 | 8,921 | 4,610 | 4,311 | 83 | 1,132 | 479 | 653 | | | | |
| 39 | 8,952 | 4,596 | 4,356 | 84 | 968 | 397 | 571 | | | | |
| 40 | 10,275 | 5,297 | 4,978 | 85 | 883 | 339 | 544 | | | | |
| 41 | 9,447 | 4,878 | 4,569 | 86 | 816 | 303 | 513 | | | | |
| 42 | 9,418 | 5,001 | 4,417 | 87 | 650 | 224 | 426 | | | | |
| 43 | 8,877 | 4,628 | 4,249 | 88 | 588 | 233 | 355 | | | | |
| 44 | 9,139 | 4,775 | 4,364 | 89 | 538 | 185 | 353 | | | | |

| | Total | Male | Female |
|------------------------------|-------|------|--------|
| Median Age | 33.9 | 33.6 | 34.1 |
| Males Per 100 Females | | | 108.2 |
| Youth Dependency (<18/18-64) | | | 39.8 |
| Aged Dependency (65+/18-64) | | | 12.4 |

Source: Alaska Department of Labor and Workforce Development, Research and Analysis Section

Table 1.8
Alaska Population by Age and Sex, July 1, 2012

| Age | Total | Male | Female | Age | Total | Male | Female | Age | Total | Male | Female |
|---------|--------|-------|--------|-----|--------|-------|--------|--------------|----------------|----------------|----------------|
| Under 1 | 10,622 | 5,377 | 5,245 | 45 | 9,561 | 4,896 | 4,665 | 90 | 424 | 162 | 262 |
| 1 | 10,938 | 5,615 | 5,323 | 46 | 9,577 | 4,936 | 4,641 | 91 | 348 | 124 | 224 |
| 2 | 10,945 | 5,617 | 5,328 | 47 | 9,868 | 5,134 | 4,734 | 92 | 290 | 85 | 205 |
| 3 | 11,092 | 5,813 | 5,279 | 48 | 10,319 | 5,376 | 4,943 | 93 | 186 | 51 | 135 |
| 4 | 11,128 | 5,746 | 5,382 | 49 | 10,950 | 5,676 | 5,274 | 94 | 143 | 49 | 94 |
| 5 | 11,095 | 5,660 | 5,435 | 50 | 11,735 | 6,124 | 5,611 | 95+ | 436 | 113 | 323 |
| 6 | 10,564 | 5,479 | 5,085 | 51 | 11,255 | 5,784 | 5,471 | Total | 731,630 | 379,146 | 352,484 |
| 7 | 10,431 | 5,345 | 5,086 | 52 | 11,292 | 5,968 | 5,324 | | | | |
| 8 | 10,473 | 5,368 | 5,105 | 53 | 10,917 | 5,598 | 5,319 | | | | |
| 9 | 10,168 | 5,161 | 5,007 | 54 | 11,199 | 5,769 | 5,430 | Ages | Total | Male | Female |
| 10 | 10,263 | 5,249 | 5,014 | 55 | 11,416 | 5,899 | 5,517 | 0-4 | 54,725 | 28,168 | 26,557 |
| 11 | 10,389 | 5,353 | 5,036 | 56 | 10,734 | 5,500 | 5,234 | 5-9 | 52,731 | 27,013 | 25,718 |
| 12 | 10,409 | 5,371 | 5,038 | 57 | 10,718 | 5,492 | 5,226 | 10-14 | 51,294 | 26,342 | 24,952 |
| 13 | 10,211 | 5,214 | 4,997 | 58 | 10,500 | 5,521 | 4,979 | 15-19 | 49,742 | 26,073 | 23,669 |
| 14 | 10,022 | 5,155 | 4,867 | 59 | 10,074 | 5,369 | 4,705 | 20-24 | 55,725 | 29,968 | 25,757 |
| 15 | 10,218 | 5,267 | 4,951 | 60 | 9,570 | 5,045 | 4,525 | 25-29 | 57,806 | 30,394 | 27,412 |
| 16 | 10,112 | 5,279 | 4,833 | 61 | 8,631 | 4,618 | 4,013 | 30-34 | 52,440 | 27,253 | 25,187 |
| 17 | 10,177 | 5,276 | 4,901 | 62 | 8,277 | 4,414 | 3,863 | 35-39 | 45,365 | 23,346 | 22,019 |
| 18 | 9,939 | 5,219 | 4,720 | 63 | 7,552 | 3,963 | 3,589 | 40-44 | 46,968 | 24,427 | 22,541 |
| 19 | 9,296 | 5,032 | 4,264 | 64 | 6,913 | 3,616 | 3,297 | 45-49 | 50,275 | 26,018 | 24,257 |
| 20 | 10,633 | 5,711 | 4,922 | 65 | 7,121 | 3,907 | 3,214 | 50-54 | 56,398 | 29,243 | 27,155 |
| 21 | 11,005 | 6,113 | 4,892 | 66 | 5,044 | 2,638 | 2,406 | 55-59 | 53,442 | 27,781 | 25,661 |
| 22 | 11,505 | 6,224 | 5,281 | 67 | 4,893 | 2,569 | 2,324 | 60-64 | 40,943 | 21,656 | 19,287 |
| 23 | 11,191 | 5,946 | 5,245 | 68 | 4,816 | 2,514 | 2,302 | 65-69 | 26,362 | 13,968 | 12,394 |
| 24 | 11,391 | 5,974 | 5,417 | 69 | 4,488 | 2,340 | 2,148 | 70-74 | 15,551 | 7,922 | 7,629 |
| 25 | 11,585 | 6,244 | 5,341 | 70 | 3,933 | 1,969 | 1,964 | 75-79 | 9,814 | 4,711 | 5,103 |
| 26 | 11,776 | 6,279 | 5,497 | 71 | 3,462 | 1,802 | 1,660 | 80-84 | 6,588 | 2,918 | 3,670 |
| 27 | 11,522 | 5,899 | 5,623 | 72 | 2,970 | 1,524 | 1,446 | 85-89 | 3,634 | 1,361 | 2,273 |
| 28 | 11,398 | 5,947 | 5,451 | 73 | 2,607 | 1,343 | 1,264 | 90-94 | 1,391 | 471 | 920 |
| 29 | 11,525 | 6,025 | 5,500 | 74 | 2,579 | 1,284 | 1,295 | | | | |
| 30 | 11,664 | 6,178 | 5,486 | 75 | 2,309 | 1,145 | 1,164 | 16+ | 562,662 | 292,356 | 270,306 |
| 31 | 10,811 | 5,647 | 5,164 | 76 | 2,073 | 1,042 | 1,031 | 18+ | 542,373 | 281,801 | 260,572 |
| 32 | 10,644 | 5,414 | 5,230 | 77 | 1,961 | 939 | 1,022 | 65+ | 63,776 | 31,464 | 32,312 |
| 33 | 9,858 | 5,137 | 4,721 | 78 | 1,781 | 825 | 956 | 95+ | 436 | 113 | 323 |
| 34 | 9,463 | 4,877 | 4,586 | 79 | 1,690 | 760 | 930 | | | | |
| 35 | 9,886 | 5,098 | 4,788 | 80 | 1,514 | 714 | 800 | | | | |
| 36 | 8,843 | 4,588 | 4,255 | 81 | 1,466 | 655 | 811 | | | | |
| 37 | 9,008 | 4,616 | 4,392 | 82 | 1,382 | 598 | 784 | | | | |
| 38 | 8,792 | 4,611 | 4,181 | 83 | 1,210 | 528 | 682 | | | | |
| 39 | 8,836 | 4,433 | 4,403 | 84 | 1,016 | 423 | 593 | | | | |
| 40 | 9,492 | 4,877 | 4,615 | 85 | 901 | 361 | 540 | | | | |
| 41 | 9,612 | 4,979 | 4,633 | 86 | 859 | 339 | 520 | | | | |
| 42 | 9,642 | 5,037 | 4,605 | 87 | 689 | 242 | 447 | | | | |
| 43 | 9,352 | 4,883 | 4,469 | 88 | 603 | 213 | 390 | | | | |
| 44 | 8,870 | 4,651 | 4,219 | 89 | 582 | 206 | 376 | | | | |

| | Total | Male | Female |
|------------------------------|-------|------|--------|
| Median Age | 34.1 | 33.9 | 34.3 |
| Males Per 100 Females | | | 107.6 |
| Youth Dependency (<18/18-64) | | | 39.5 |
| Aged Dependency (65+/18-64) | | | 13.3 |

Source: Alaska Department of Labor and Workforce Development, Research and Analysis Section

Table 1.9
Alaska Population by Age and Sex, July 1, 2013

| Age | Total | Male | Female | Age | Total | Male | Female | Age | Total | Male | Female |
|---------|--------|-------|--------|-----|--------|-------|--------|------------------------------|----------------|----------------|----------------|
| Under 1 | 10,605 | 5,465 | 5,140 | 45 | 9,310 | 4,833 | 4,477 | 90 | 439 | 173 | 266 |
| 1 | 10,467 | 5,254 | 5,213 | 46 | 9,056 | 4,651 | 4,405 | 91 | 400 | 143 | 257 |
| 2 | 11,027 | 5,757 | 5,270 | 47 | 9,486 | 4,802 | 4,684 | 92 | 276 | 91 | 185 |
| 3 | 10,927 | 5,563 | 5,364 | 48 | 9,784 | 5,113 | 4,671 | 93 | 214 | 55 | 159 |
| 4 | 11,206 | 5,938 | 5,268 | 49 | 10,280 | 5,319 | 4,961 | 94 | 159 | 50 | 109 |
| 5 | 11,287 | 5,872 | 5,415 | 50 | 11,657 | 6,100 | 5,557 | 95+ | 457 | 135 | 322 |
| 6 | 10,919 | 5,503 | 5,416 | 51 | 10,931 | 5,575 | 5,356 | Total | 736,616 | 380,858 | 355,758 |
| 7 | 10,664 | 5,584 | 5,080 | 52 | 11,439 | 5,974 | 5,465 | Ages | Total | Male | Female |
| 8 | 10,621 | 5,506 | 5,115 | 53 | 11,082 | 5,785 | 5,297 | 0-4 | 54,232 | 27,977 | 26,255 |
| 9 | 10,361 | 5,159 | 5,202 | 54 | 10,906 | 5,583 | 5,323 | 5-9 | 53,852 | 27,624 | 26,228 |
| 10 | 10,363 | 5,345 | 5,018 | 55 | 11,574 | 5,999 | 5,575 | 10-14 | 51,828 | 26,708 | 25,120 |
| 11 | 10,210 | 5,236 | 4,974 | 56 | 10,870 | 5,540 | 5,330 | 15-19 | 49,052 | 25,597 | 23,455 |
| 12 | 10,420 | 5,352 | 5,068 | 57 | 10,649 | 5,472 | 5,177 | 20-24 | 54,939 | 29,500 | 25,439 |
| 13 | 10,502 | 5,393 | 5,109 | 58 | 10,711 | 5,487 | 5,224 | 25-29 | 57,186 | 29,783 | 27,403 |
| 14 | 10,333 | 5,382 | 4,951 | 59 | 10,305 | 5,374 | 4,931 | 30-34 | 54,289 | 28,103 | 26,186 |
| 15 | 10,092 | 5,159 | 4,933 | 60 | 10,262 | 5,512 | 4,750 | 35-39 | 45,857 | 23,668 | 22,189 |
| 16 | 10,199 | 5,289 | 4,910 | 61 | 9,011 | 4,765 | 4,246 | 40-44 | 46,515 | 23,934 | 22,581 |
| 17 | 10,041 | 5,213 | 4,828 | 62 | 8,617 | 4,568 | 4,049 | 45-49 | 47,916 | 24,718 | 23,198 |
| 18 | 9,674 | 5,084 | 4,590 | 63 | 7,750 | 4,082 | 3,668 | 50-54 | 56,015 | 29,017 | 26,998 |
| 19 | 9,046 | 4,852 | 4,194 | 64 | 7,407 | 3,863 | 3,544 | 55-59 | 54,109 | 27,872 | 26,237 |
| 20 | 10,084 | 5,556 | 4,528 | 65 | 6,913 | 3,709 | 3,204 | 60-64 | 43,047 | 22,790 | 20,257 |
| 21 | 10,789 | 5,789 | 5,000 | 66 | 6,688 | 3,587 | 3,101 | 65-69 | 28,057 | 14,815 | 13,242 |
| 22 | 11,157 | 6,102 | 5,055 | 67 | 4,888 | 2,558 | 2,330 | 70-74 | 16,920 | 8,654 | 8,266 |
| 23 | 11,521 | 6,079 | 5,442 | 68 | 4,909 | 2,543 | 2,366 | 75-79 | 10,395 | 5,055 | 5,340 |
| 24 | 11,388 | 5,974 | 5,414 | 69 | 4,659 | 2,418 | 2,241 | 80-84 | 6,763 | 2,993 | 3,770 |
| 25 | 11,768 | 6,136 | 5,632 | 70 | 4,439 | 2,331 | 2,108 | 85-89 | 3,699 | 1,403 | 2,296 |
| 26 | 11,099 | 5,903 | 5,196 | 71 | 3,701 | 1,828 | 1,873 | 90-94 | 1,488 | 512 | 976 |
| 27 | 11,576 | 6,023 | 5,553 | 72 | 3,340 | 1,745 | 1,595 | 16+ | 566,612 | 293,390 | 273,222 |
| 28 | 11,554 | 5,941 | 5,613 | 73 | 2,826 | 1,426 | 1,400 | 18+ | 546,372 | 282,888 | 263,484 |
| 29 | 11,189 | 5,780 | 5,409 | 74 | 2,614 | 1,324 | 1,290 | 65+ | 67,779 | 33,567 | 34,212 |
| 30 | 12,320 | 6,511 | 5,809 | 75 | 2,487 | 1,254 | 1,233 | 95+ | 457 | 135 | 322 |
| 31 | 10,891 | 5,617 | 5,274 | 76 | 2,233 | 1,110 | 1,123 | Total | Male | Female | |
| 32 | 10,933 | 5,651 | 5,282 | 77 | 2,018 | 987 | 1,031 | Median Age | 34.3 | 34.0 | 34.5 |
| 33 | 10,441 | 5,262 | 5,179 | 78 | 1,914 | 891 | 1,023 | Males Per 100 Females | | | 107.1 |
| 34 | 9,704 | 5,062 | 4,642 | 79 | 1,743 | 813 | 930 | Youth Dependency (<18/18-64) | | | 39.8 |
| 35 | 9,910 | 5,194 | 4,716 | 80 | 1,555 | 711 | 844 | Aged Dependency (65+/18-64) | | | 14.2 |
| 36 | 9,404 | 4,750 | 4,654 | 81 | 1,464 | 667 | 797 | | | | |
| 37 | 8,846 | 4,593 | 4,253 | 82 | 1,376 | 613 | 763 | | | | |
| 38 | 9,023 | 4,657 | 4,366 | 83 | 1,287 | 546 | 741 | | | | |
| 39 | 8,674 | 4,474 | 4,200 | 84 | 1,081 | 456 | 625 | | | | |
| 40 | 9,297 | 4,660 | 4,637 | 85 | 948 | 375 | 573 | | | | |
| 41 | 8,811 | 4,511 | 4,300 | 86 | 860 | 351 | 509 | | | | |
| 42 | 9,735 | 5,077 | 4,658 | 87 | 718 | 266 | 452 | | | | |
| 43 | 9,403 | 4,827 | 4,576 | 88 | 613 | 231 | 382 | | | | |
| 44 | 9,269 | 4,859 | 4,410 | 89 | 560 | 180 | 380 | | | | |

Source: Alaska Department of Labor and Workforce Development, Research and Analysis Section

Table 1.10**Alaska Population by Age and Sex, July 1, 2014**

| Age | Total | Male | Female | Age | Total | Male | Female | Age | Total | Male | Female |
|---------|--------|-------|--------|-----|--------|-------|--------|------------------------------|----------------|----------------|----------------|
| Under 1 | 10,641 | 5,359 | 5,282 | 45 | 9,698 | 5,069 | 4,629 | 90 | 411 | 151 | 260 |
| 1 | 10,509 | 5,332 | 5,177 | 46 | 8,713 | 4,566 | 4,147 | 91 | 417 | 154 | 263 |
| 2 | 10,450 | 5,364 | 5,086 | 47 | 8,938 | 4,540 | 4,398 | 92 | 331 | 112 | 219 |
| 3 | 10,869 | 5,588 | 5,281 | 48 | 9,357 | 4,763 | 4,594 | 93 | 215 | 64 | 151 |
| 4 | 10,963 | 5,610 | 5,353 | 49 | 9,643 | 5,014 | 4,629 | 94 | 164 | 48 | 116 |
| 5 | 11,134 | 5,887 | 5,247 | 50 | 10,808 | 5,686 | 5,122 | 95+ | 517 | 158 | 359 |
| 6 | 10,982 | 5,662 | 5,320 | 51 | 10,737 | 5,519 | 5,218 | Total | 737,354 | 381,789 | 355,565 |
| 7 | 10,916 | 5,601 | 5,315 | 52 | 10,953 | 5,684 | 5,269 | Ages | Total | Male | Female |
| 8 | 10,632 | 5,643 | 4,989 | 53 | 11,183 | 5,777 | 5,406 | 0-4 | 53,432 | 27,253 | 26,179 |
| 9 | 10,347 | 5,239 | 5,108 | 54 | 10,900 | 5,719 | 5,181 | 5-9 | 54,011 | 28,032 | 25,979 |
| 10 | 10,424 | 5,266 | 5,158 | 55 | 11,127 | 5,739 | 5,388 | 10-14 | 51,250 | 26,319 | 24,931 |
| 11 | 10,187 | 5,250 | 4,937 | 56 | 10,911 | 5,595 | 5,316 | 15-19 | 48,511 | 25,349 | 23,162 |
| 12 | 9,989 | 5,102 | 4,887 | 57 | 10,613 | 5,443 | 5,170 | 20-24 | 54,502 | 29,575 | 24,927 |
| 13 | 10,349 | 5,307 | 5,042 | 58 | 10,568 | 5,463 | 5,105 | 25-29 | 57,749 | 30,218 | 27,531 |
| 14 | 10,301 | 5,394 | 4,907 | 59 | 10,432 | 5,317 | 5,115 | 30-34 | 55,951 | 28,966 | 26,985 |
| 15 | 10,183 | 5,259 | 4,924 | 60 | 10,326 | 5,433 | 4,893 | 35-39 | 46,633 | 24,110 | 22,523 |
| 16 | 9,988 | 5,171 | 4,817 | 61 | 9,562 | 5,140 | 4,422 | 40-44 | 45,192 | 23,361 | 21,831 |
| 17 | 10,005 | 5,185 | 4,820 | 62 | 8,884 | 4,646 | 4,238 | 45-49 | 46,349 | 23,952 | 22,397 |
| 18 | 9,527 | 5,014 | 4,513 | 63 | 7,922 | 4,112 | 3,810 | 50-54 | 54,581 | 28,385 | 26,196 |
| 19 | 8,808 | 4,720 | 4,088 | 64 | 7,608 | 3,987 | 3,621 | 55-59 | 53,651 | 27,557 | 26,094 |
| 20 | 9,773 | 5,372 | 4,401 | 65 | 7,279 | 3,901 | 3,378 | 60-64 | 44,302 | 23,318 | 20,984 |
| 21 | 10,424 | 5,791 | 4,633 | 66 | 6,429 | 3,382 | 3,047 | 65-69 | 29,677 | 15,669 | 14,008 |
| 22 | 11,121 | 5,939 | 5,182 | 67 | 6,472 | 3,462 | 3,010 | 70-74 | 18,038 | 9,211 | 8,827 |
| 23 | 11,405 | 6,230 | 5,175 | 68 | 4,857 | 2,523 | 2,334 | 75-79 | 10,765 | 5,268 | 5,497 |
| 24 | 11,779 | 6,243 | 5,536 | 69 | 4,640 | 2,401 | 2,239 | 80-84 | 6,885 | 3,078 | 3,807 |
| 25 | 11,848 | 6,247 | 5,601 | 70 | 4,562 | 2,360 | 2,202 | 85-89 | 3,820 | 1,481 | 2,339 |
| 26 | 11,316 | 5,915 | 5,401 | 71 | 4,096 | 2,128 | 1,968 | 90-94 | 1,538 | 529 | 1,009 |
| 27 | 11,198 | 5,852 | 5,346 | 72 | 3,544 | 1,775 | 1,769 | 16+ | 568,478 | 294,807 | 273,304 |
| 28 | 11,891 | 6,278 | 5,613 | 73 | 3,057 | 1,563 | 1,494 | 18+ | 548,485 | 284,451 | 263,667 |
| 29 | 11,496 | 5,926 | 5,570 | 74 | 2,779 | 1,385 | 1,394 | 65+ | 71,240 | 35,275 | 35,598 |
| 30 | 12,031 | 6,279 | 5,752 | 75 | 2,501 | 1,262 | 1,239 | 95+ | 517 | 158 | 359 |
| 31 | 11,642 | 6,117 | 5,525 | 76 | 2,360 | 1,193 | 1,167 | Total | Male | Female | |
| 32 | 11,143 | 5,738 | 5,405 | 77 | 2,118 | 1,009 | 1,109 | Median Age | 34.3 | 34.1 | 34.6 |
| 33 | 10,819 | 5,613 | 5,206 | 78 | 1,930 | 924 | 1,006 | Males Per 100 Females | | | 107.4 |
| 34 | 10,316 | 5,219 | 5,097 | 79 | 1,856 | 880 | 976 | Youth Dependency (<18/18-64) | | | 39.6 |
| 35 | 10,217 | 5,413 | 4,804 | 80 | 1,615 | 768 | 847 | Aged Dependency (65+/18-64) | | | 14.9 |
| 36 | 9,332 | 4,782 | 4,550 | 81 | 1,490 | 643 | 847 | | | | |
| 37 | 9,347 | 4,768 | 4,579 | 82 | 1,351 | 613 | 738 | | | | |
| 38 | 8,883 | 4,666 | 4,217 | 83 | 1,276 | 565 | 711 | | | | |
| 39 | 8,854 | 4,481 | 4,373 | 84 | 1,153 | 489 | 664 | | | | |
| 40 | 9,042 | 4,649 | 4,393 | 85 | 1,005 | 400 | 605 | | | | |
| 41 | 8,561 | 4,344 | 4,217 | 86 | 903 | 366 | 537 | | | | |
| 42 | 8,905 | 4,669 | 4,236 | 87 | 698 | 267 | 431 | | | | |
| 43 | 9,428 | 4,836 | 4,592 | 88 | 643 | 255 | 388 | | | | |
| 44 | 9,256 | 4,863 | 4,393 | 89 | 571 | 193 | 378 | | | | |

Source: Alaska Department of Labor and Workforce Development, Research and Analysis Section

Table 1.11

Alaska Population by Age and Sex, July 1, 2015

| Age | Total | Male | Female | Age | Total | Male | Female | Age | Total | Male | Female |
|---------|--------|-------|--------|-----|--------|-------|--------|--------------|----------------|----------------|----------------|
| Under 1 | 10,738 | 5,409 | 5,329 | 45 | 9,646 | 4,960 | 4,686 | 90 | 443 | 160 | 283 |
| 1 | 10,474 | 5,263 | 5,211 | 46 | 9,020 | 4,740 | 4,280 | 91 | 387 | 131 | 256 |
| 2 | 10,621 | 5,535 | 5,086 | 47 | 8,588 | 4,432 | 4,156 | 92 | 331 | 106 | 225 |
| 3 | 10,344 | 5,239 | 5,105 | 48 | 8,822 | 4,545 | 4,277 | 93 | 254 | 77 | 177 |
| 4 | 10,877 | 5,635 | 5,242 | 49 | 9,232 | 4,678 | 4,554 | 94 | 164 | 55 | 109 |
| 5 | 10,889 | 5,560 | 5,329 | 50 | 10,190 | 5,402 | 4,788 | 95+ | 558 | 177 | 381 |
| 6 | 10,970 | 5,740 | 5,230 | 51 | 10,009 | 5,196 | 4,813 | Total | 737,625 | 382,127 | 355,498 |
| 7 | 10,948 | 5,665 | 5,283 | 52 | 10,745 | 5,621 | 5,124 | | | | |
| 8 | 11,025 | 5,728 | 5,297 | 53 | 10,686 | 5,504 | 5,182 | | | | |
| 9 | 10,332 | 5,358 | 4,974 | 54 | 10,972 | 5,675 | 5,297 | Ages | Total | Male | Female |
| 10 | 10,459 | 5,369 | 5,090 | 55 | 11,192 | 5,929 | 5,263 | 0-4 | 53,054 | 27,081 | 25,973 |
| 11 | 10,194 | 5,157 | 5,037 | 56 | 10,430 | 5,303 | 5,127 | 5-9 | 54,164 | 28,051 | 26,113 |
| 12 | 10,024 | 5,146 | 4,878 | 57 | 10,676 | 5,491 | 5,185 | 10-14 | 50,898 | 26,105 | 24,793 |
| 13 | 9,963 | 5,058 | 4,905 | 58 | 10,530 | 5,405 | 5,125 | 15-19 | 48,085 | 25,214 | 22,871 |
| 14 | 10,258 | 5,375 | 4,883 | 59 | 10,294 | 5,272 | 5,022 | 20-24 | 52,925 | 28,839 | 24,086 |
| 15 | 10,229 | 5,314 | 4,915 | 60 | 10,473 | 5,415 | 5,058 | 25-29 | 58,223 | 30,541 | 27,682 |
| 16 | 10,095 | 5,305 | 4,790 | 61 | 9,642 | 5,103 | 4,539 | 30-34 | 56,971 | 29,569 | 27,402 |
| 17 | 9,758 | 5,048 | 4,710 | 62 | 9,457 | 5,023 | 4,434 | 35-39 | 47,843 | 24,748 | 23,095 |
| 18 | 9,451 | 4,968 | 4,483 | 63 | 8,263 | 4,253 | 4,010 | 40-44 | 43,986 | 22,743 | 21,243 |
| 19 | 8,552 | 4,579 | 3,973 | 64 | 7,756 | 4,013 | 3,743 | 45-49 | 45,308 | 23,355 | 21,953 |
| 20 | 9,374 | 5,104 | 4,270 | 65 | 7,530 | 4,047 | 3,483 | 50-54 | 52,602 | 27,398 | 25,204 |
| 21 | 9,929 | 5,497 | 4,432 | 66 | 6,791 | 3,573 | 3,218 | 55-59 | 53,122 | 27,400 | 25,722 |
| 22 | 10,629 | 5,856 | 4,773 | 67 | 6,178 | 3,260 | 2,918 | 60-64 | 45,591 | 23,807 | 21,784 |
| 23 | 11,178 | 5,885 | 5,293 | 68 | 6,381 | 3,363 | 3,018 | 65-69 | 31,492 | 16,620 | 14,872 |
| 24 | 11,815 | 6,497 | 5,318 | 69 | 4,612 | 2,377 | 2,235 | 70-74 | 19,100 | 9,751 | 9,349 |
| 25 | 12,264 | 6,560 | 5,704 | 70 | 4,598 | 2,358 | 2,240 | 75-79 | 11,165 | 5,492 | 5,673 |
| 26 | 11,480 | 6,042 | 5,438 | 71 | 4,234 | 2,156 | 2,078 | 80-84 | 7,012 | 3,148 | 3,864 |
| 27 | 11,348 | 5,779 | 5,569 | 72 | 3,926 | 2,059 | 1,867 | 85-89 | 3,947 | 1,559 | 2,388 |
| 28 | 11,422 | 6,024 | 5,398 | 73 | 3,303 | 1,629 | 1,674 | 90-94 | 1,579 | 529 | 1,050 |
| 29 | 11,709 | 6,136 | 5,573 | 74 | 3,039 | 1,549 | 1,490 | 16+ | 569,280 | 295,576 | 273,704 |
| 30 | 12,224 | 6,383 | 5,841 | 75 | 2,659 | 1,321 | 1,338 | 18+ | 549,427 | 285,223 | 264,204 |
| 31 | 11,258 | 5,796 | 5,462 | 76 | 2,377 | 1,203 | 1,174 | 65+ | 74,853 | 37,276 | 37,577 |
| 32 | 11,792 | 6,152 | 5,640 | 77 | 2,240 | 1,097 | 1,143 | 95+ | 558 | 177 | 381 |
| 33 | 10,982 | 5,621 | 5,361 | 78 | 1,997 | 944 | 1,053 | | | | |
| 34 | 10,715 | 5,617 | 5,098 | 79 | 1,892 | 927 | 965 | | | | |
| 35 | 10,821 | 5,610 | 5,211 | 80 | 1,730 | 840 | 890 | | | | |
| 36 | 9,606 | 4,986 | 4,620 | 81 | 1,555 | 706 | 849 | | | | |
| 37 | 9,388 | 4,846 | 4,542 | 82 | 1,359 | 578 | 781 | | | | |
| 38 | 9,342 | 4,809 | 4,533 | 83 | 1,253 | 552 | 701 | | | | |
| 39 | 8,686 | 4,497 | 4,189 | 84 | 1,115 | 472 | 643 | | | | |
| 40 | 9,154 | 4,688 | 4,466 | 85 | 1,071 | 429 | 642 | | | | |
| 41 | 8,257 | 4,262 | 3,995 | 86 | 929 | 378 | 551 | | | | |
| 42 | 8,577 | 4,424 | 4,153 | 87 | 735 | 290 | 445 | | | | |
| 43 | 8,710 | 4,508 | 4,202 | 88 | 627 | 256 | 371 | | | | |
| 44 | 9,288 | 4,861 | 4,427 | 89 | 585 | 206 | 379 | | | | |

| | Total | Male | Female |
|------------------------------|-------|------|--------|
| Median Age | 34.5 | 34.2 | 34.8 |
| Males Per 100 Females | | | 107.5 |
| Youth Dependency (<18/18-64) | | | 39.7 |
| Aged Dependency (65+/18-64) | | | 15.8 |

Source: Alaska Department of Labor and Workforce Development, Research and Analysis Section

Table 1.12**Alaska Population by Age, Race (Alone), and Sex, April 1, 2010**

| Age | Total Population | | | White Alone | | | Alaska Native or American Indian Alone | | | Black or African American Alone | | |
|--------------|------------------|----------------|----------------|----------------|----------------|----------------|--|---------------|---------------|---------------------------------|---------------|---------------|
| | Total | Male | Female | Total | Male | Female | Total | Male | Female | Total | Male | Female |
| 0-4 | 53,996 | 27,896 | 26,100 | 30,463 | 15,675 | 14,788 | 9,960 | 5,195 | 4,765 | 1,871 | 937 | 934 |
| 5-9 | 50,887 | 26,038 | 24,849 | 28,988 | 14,948 | 14,040 | 9,369 | 4,782 | 4,587 | 1,880 | 941 | 939 |
| 10-14 | 50,816 | 26,147 | 24,669 | 29,522 | 15,176 | 14,346 | 9,574 | 4,966 | 4,608 | 1,865 | 963 | 902 |
| 15-19 | 52,141 | 27,179 | 24,962 | 31,002 | 16,253 | 14,749 | 10,013 | 5,185 | 4,828 | 1,961 | 1,057 | 904 |
| 20-24 | 54,419 | 29,706 | 24,713 | 34,574 | 19,256 | 15,318 | 9,437 | 4,875 | 4,562 | 2,407 | 1,438 | 969 |
| 25-29 | 55,419 | 29,307 | 26,112 | 37,757 | 20,267 | 17,490 | 7,960 | 4,058 | 3,902 | 2,345 | 1,387 | 958 |
| 30-34 | 47,706 | 24,861 | 22,845 | 33,167 | 17,562 | 15,605 | 6,559 | 3,350 | 3,209 | 1,932 | 1,098 | 834 |
| 35-39 | 45,833 | 23,731 | 22,102 | 32,412 | 17,038 | 15,374 | 5,977 | 3,042 | 2,935 | 1,821 | 1,055 | 766 |
| 40-44 | 47,141 | 24,646 | 22,495 | 33,751 | 17,881 | 15,870 | 6,396 | 3,261 | 3,135 | 1,674 | 1,008 | 666 |
| 45-49 | 54,726 | 28,398 | 26,328 | 40,137 | 21,155 | 18,982 | 7,341 | 3,658 | 3,683 | 1,783 | 976 | 807 |
| 50-54 | 56,300 | 29,288 | 27,012 | 43,042 | 22,783 | 20,259 | 6,666 | 3,267 | 3,399 | 1,608 | 908 | 700 |
| 55-59 | 49,971 | 26,394 | 23,577 | 38,946 | 21,000 | 17,946 | 5,561 | 2,751 | 2,810 | 1,361 | 733 | 628 |
| 60-64 | 35,938 | 19,231 | 16,707 | 28,268 | 15,530 | 12,738 | 3,950 | 1,901 | 2,049 | 765 | 433 | 332 |
| 65-69 | 22,202 | 11,714 | 10,488 | 17,224 | 9,344 | 7,880 | 2,784 | 1,373 | 1,411 | 436 | 224 | 212 |
| 70-74 | 13,148 | 6,662 | 6,486 | 9,855 | 5,160 | 4,695 | 1,863 | 896 | 967 | 327 | 146 | 181 |
| 75-79 | 8,892 | 4,150 | 4,742 | 6,550 | 3,219 | 3,331 | 1,391 | 582 | 809 | 190 | 84 | 106 |
| 80-84 | 5,985 | 2,620 | 3,365 | 4,471 | 2,013 | 2,458 | 890 | 384 | 506 | 123 | 47 | 76 |
| 85+ | 4,711 | 1,660 | 3,051 | 3,742 | 1,324 | 2,418 | 576 | 201 | 375 | 93 | 35 | 58 |
| Total | 710,231 | 369,628 | 340,603 | 483,871 | 255,584 | 228,287 | 106,267 | 53,727 | 52,540 | 24,442 | 13,470 | 10,972 |

| Age | Asian Alone | | | Native Hawaiian or Pacific Islander Alone | | | Two or More Races | | |
|--------------|---------------|---------------|---------------|---|--------------|--------------|-------------------|---------------|---------------|
| | Total | Male | Female | Total | Male | Female | Total | Male | Female |
| 0-4 | 2,450 | 1,320 | 1,130 | 868 | 432 | 436 | 8,384 | 4,337 | 4,047 |
| 5-9 | 2,785 | 1,382 | 1,403 | 829 | 395 | 434 | 7,036 | 3,590 | 3,446 |
| 10-14 | 2,932 | 1,466 | 1,466 | 768 | 427 | 341 | 6,155 | 3,149 | 3,006 |
| 15-19 | 3,030 | 1,526 | 1,504 | 769 | 397 | 372 | 5,366 | 2,761 | 2,605 |
| 20-24 | 2,899 | 1,535 | 1,364 | 850 | 433 | 417 | 4,252 | 2,169 | 2,083 |
| 25-29 | 2,886 | 1,434 | 1,452 | 729 | 377 | 352 | 3,742 | 1,784 | 1,958 |
| 30-34 | 2,546 | 1,116 | 1,430 | 621 | 326 | 295 | 2,881 | 1,409 | 1,472 |
| 35-39 | 2,886 | 1,285 | 1,601 | 464 | 228 | 236 | 2,273 | 1,083 | 1,190 |
| 40-44 | 2,945 | 1,308 | 1,637 | 441 | 235 | 206 | 1,934 | 953 | 981 |
| 45-49 | 3,117 | 1,454 | 1,663 | 421 | 206 | 215 | 1,927 | 949 | 978 |
| 50-54 | 2,934 | 1,337 | 1,597 | 317 | 171 | 146 | 1,733 | 822 | 911 |
| 55-59 | 2,543 | 1,137 | 1,406 | 222 | 110 | 112 | 1,338 | 663 | 675 |
| 60-64 | 1,915 | 820 | 1,095 | 162 | 82 | 80 | 878 | 465 | 413 |
| 65-69 | 1,154 | 488 | 666 | 103 | 50 | 53 | 501 | 235 | 266 |
| 70-74 | 773 | 299 | 474 | 42 | 19 | 23 | 288 | 142 | 146 |
| 75-79 | 512 | 160 | 352 | 32 | 13 | 19 | 217 | 92 | 125 |
| 80-84 | 363 | 121 | 242 | 18 | 8 | 10 | 120 | 47 | 73 |
| 85+ | 213 | 69 | 144 | 6 | 1 | 5 | 81 | 30 | 51 |
| Total | 38,883 | 18,257 | 20,626 | 7,662 | 3,910 | 3,752 | 49,106 | 24,680 | 24,426 |

Note: Modified race data.

Sources: Alaska Department of Labor and Workforce Development, Research and Analysis Section; and U.S. Census Bureau

Table 1.13**Alaska Population by Age, Race (Alone or in Combination), Ethnicity, and Sex, April 1, 2010**

| Age | Total Responses | | | White Alone or in Combination | | | Alaska Native or Amer. Indian Alone or in Comb. | | | Black or African American Alone or in Combination | | |
|--------------|-----------------|----------------|----------------|-------------------------------|----------------|----------------|---|---------------|---------------|---|---------------|---------------|
| | Total | Male | Female | Total | Male | Female | Total | Male | Female | Total | Male | Female |
| 0-4 | 63,488 | 32,820 | 30,668 | 37,927 | 19,544 | 18,383 | 15,116 | 7,882 | 7,234 | 4,157 | 2,110 | 2,047 |
| 5-9 | 58,764 | 30,058 | 28,706 | 35,213 | 18,131 | 17,082 | 13,804 | 7,050 | 6,754 | 3,676 | 1,870 | 1,806 |
| 10-14 | 57,656 | 29,651 | 28,005 | 35,009 | 17,976 | 17,033 | 13,456 | 6,972 | 6,484 | 3,408 | 1,711 | 1,697 |
| 15-19 | 58,029 | 30,203 | 27,826 | 35,831 | 18,734 | 17,097 | 13,587 | 7,037 | 6,550 | 3,114 | 1,630 | 1,484 |
| 20-24 | 58,986 | 32,033 | 26,953 | 38,327 | 21,159 | 17,168 | 12,332 | 6,334 | 5,998 | 3,202 | 1,849 | 1,353 |
| 25-29 | 59,420 | 31,192 | 28,228 | 41,151 | 21,872 | 19,279 | 10,571 | 5,290 | 5,281 | 2,933 | 1,652 | 1,281 |
| 30-34 | 50,787 | 26,368 | 24,419 | 35,759 | 18,820 | 16,939 | 8,539 | 4,312 | 4,227 | 2,377 | 1,325 | 1,052 |
| 35-39 | 48,252 | 24,882 | 23,370 | 34,466 | 18,012 | 16,454 | 7,604 | 3,809 | 3,795 | 2,096 | 1,197 | 899 |
| 40-44 | 49,208 | 25,658 | 23,550 | 35,490 | 18,728 | 16,762 | 7,872 | 3,994 | 3,878 | 1,871 | 1,115 | 756 |
| 45-49 | 56,775 | 29,401 | 27,374 | 41,870 | 22,003 | 19,867 | 8,884 | 4,424 | 4,460 | 1,976 | 1,072 | 904 |
| 50-54 | 58,127 | 30,147 | 27,980 | 44,579 | 23,508 | 21,071 | 8,067 | 3,922 | 4,145 | 1,766 | 978 | 788 |
| 55-59 | 51,381 | 27,093 | 24,288 | 40,134 | 21,589 | 18,545 | 6,675 | 3,303 | 3,372 | 1,478 | 798 | 680 |
| 60-64 | 36,866 | 19,723 | 17,143 | 29,051 | 15,952 | 13,099 | 4,699 | 2,302 | 2,397 | 845 | 471 | 374 |
| 65-69 | 22,737 | 11,969 | 10,768 | 17,669 | 9,555 | 8,114 | 3,219 | 1,578 | 1,641 | 484 | 250 | 234 |
| 70-74 | 13,448 | 6,810 | 6,638 | 10,095 | 5,282 | 4,813 | 2,121 | 1,027 | 1,094 | 353 | 153 | 200 |
| 75-79 | 9,114 | 4,243 | 4,871 | 6,743 | 3,304 | 3,439 | 1,575 | 659 | 916 | 203 | 88 | 115 |
| 80-84 | 6,110 | 2,668 | 3,442 | 4,585 | 2,058 | 2,527 | 997 | 427 | 570 | 129 | 50 | 79 |
| 85+ | 4,794 | 1,690 | 3,104 | 3,809 | 1,347 | 2,462 | 643 | 227 | 416 | 100 | 36 | 64 |
| Total | 763,942 | 396,609 | 367,333 | 527,708 | 277,574 | 250,134 | 139,761 | 70,549 | 69,212 | 34,168 | 18,355 | 15,813 |

| Age | Asian Alone or in Combination | | | Native Hawaiian or Pac. Is. Alone or in Combination | | | Hispanic or Latino Origin | | |
|--------------|-------------------------------|---------------|---------------|---|--------------|--------------|---------------------------|---------------|---------------|
| | Total | Male | Female | Total | Male | Female | Total | Male | Female |
| 0-4 | 4,707 | 2,489 | 2,218 | 1,581 | 795 | 786 | 4,686 | 2,353 | 2,333 |
| 5-9 | 4,645 | 2,314 | 2,331 | 1,426 | 693 | 733 | 4,119 | 2,138 | 1,981 |
| 10-14 | 4,540 | 2,310 | 2,230 | 1,243 | 682 | 561 | 3,807 | 1,902 | 1,905 |
| 15-19 | 4,346 | 2,201 | 2,145 | 1,151 | 601 | 550 | 3,605 | 1,871 | 1,734 |
| 20-24 | 3,970 | 2,105 | 1,865 | 1,155 | 586 | 569 | 3,838 | 2,114 | 1,724 |
| 25-29 | 3,766 | 1,859 | 1,907 | 999 | 519 | 480 | 3,567 | 1,857 | 1,710 |
| 30-34 | 3,288 | 1,475 | 1,813 | 824 | 436 | 388 | 2,848 | 1,429 | 1,419 |
| 35-39 | 3,457 | 1,561 | 1,896 | 629 | 303 | 326 | 2,549 | 1,264 | 1,285 |
| 40-44 | 3,397 | 1,524 | 1,873 | 578 | 297 | 281 | 2,403 | 1,248 | 1,155 |
| 45-49 | 3,488 | 1,629 | 1,859 | 557 | 273 | 284 | 2,314 | 1,143 | 1,171 |
| 50-54 | 3,276 | 1,505 | 1,771 | 439 | 234 | 205 | 1,946 | 1,041 | 905 |
| 55-59 | 2,784 | 1,257 | 1,527 | 310 | 146 | 164 | 1,429 | 751 | 678 |
| 60-64 | 2,062 | 896 | 1,166 | 209 | 102 | 107 | 934 | 467 | 467 |
| 65-69 | 1,236 | 525 | 711 | 129 | 61 | 68 | 528 | 267 | 261 |
| 70-74 | 826 | 327 | 499 | 53 | 21 | 32 | 309 | 142 | 167 |
| 75-79 | 551 | 174 | 377 | 42 | 18 | 24 | 191 | 84 | 107 |
| 80-84 | 376 | 123 | 253 | 23 | 10 | 13 | 94 | 39 | 55 |
| 85+ | 230 | 77 | 153 | 12 | 3 | 9 | 82 | 18 | 64 |
| Total | 50,945 | 24,351 | 26,594 | 11,360 | 5,780 | 5,580 | 39,249 | 20,128 | 19,121 |

Note: Modified race data. "Total Responses" are greater than total population because individuals may report more than one race group.

Sources: Alaska Department of Labor and Workforce Development, Research and Analysis Section; and U.S. Census Bureau

Table 1.14

Alaska Population by Age, Race (Alone), and Sex, July 1, 2011

| Age | Total Population | | | White Alone | | | Alaska Native or American Indian Alone | | | Black or African American Alone | | |
|--------------|------------------|----------------|----------------|----------------|----------------|----------------|--|---------------|---------------|---------------------------------|---------------|---------------|
| | Total | Male | Female | Total | Male | Female | Total | Male | Female | Total | Male | Female |
| 0-4 | 55,339 | 28,496 | 26,843 | 31,031 | 15,905 | 15,126 | 10,587 | 5,486 | 5,101 | 2,025 | 1,067 | 958 |
| 5-9 | 51,553 | 26,427 | 25,126 | 29,241 | 15,120 | 14,121 | 9,449 | 4,803 | 4,646 | 1,917 | 937 | 980 |
| 10-14 | 51,348 | 26,384 | 24,964 | 29,449 | 15,145 | 14,304 | 9,628 | 4,977 | 4,651 | 1,953 | 1,012 | 941 |
| 15-19 | 50,688 | 26,413 | 24,275 | 29,987 | 15,701 | 14,286 | 9,551 | 4,919 | 4,632 | 2,047 | 1,121 | 926 |
| 20-24 | 55,253 | 30,106 | 25,147 | 34,800 | 19,384 | 15,416 | 9,543 | 4,889 | 4,654 | 2,608 | 1,560 | 1,048 |
| 25-29 | 57,319 | 30,366 | 26,953 | 38,705 | 20,739 | 17,966 | 8,450 | 4,366 | 4,084 | 2,360 | 1,378 | 982 |
| 30-34 | 50,532 | 26,240 | 24,292 | 35,081 | 18,450 | 16,631 | 6,801 | 3,469 | 3,332 | 2,125 | 1,240 | 885 |
| 35-39 | 44,833 | 23,246 | 21,587 | 31,224 | 16,450 | 14,774 | 5,970 | 3,051 | 2,919 | 1,849 | 1,064 | 785 |
| 40-44 | 47,156 | 24,579 | 22,577 | 33,937 | 17,948 | 15,989 | 6,006 | 3,047 | 2,959 | 1,714 | 1,011 | 703 |
| 45-49 | 52,277 | 27,063 | 25,214 | 37,749 | 19,838 | 17,911 | 7,256 | 3,625 | 3,631 | 1,716 | 957 | 759 |
| 50-54 | 56,605 | 29,447 | 27,158 | 42,775 | 22,591 | 20,184 | 6,881 | 3,395 | 3,486 | 1,676 | 974 | 702 |
| 55-59 | 51,975 | 27,174 | 24,801 | 40,403 | 21,521 | 18,882 | 5,738 | 2,819 | 2,919 | 1,431 | 778 | 653 |
| 60-64 | 39,416 | 21,003 | 18,413 | 30,857 | 16,891 | 13,966 | 4,371 | 2,120 | 2,251 | 901 | 490 | 411 |
| 65-69 | 23,698 | 12,464 | 11,234 | 18,474 | 10,001 | 8,473 | 2,741 | 1,323 | 1,418 | 514 | 254 | 260 |
| 70-74 | 14,417 | 7,398 | 7,019 | 10,931 | 5,784 | 5,147 | 1,959 | 947 | 1,012 | 325 | 148 | 177 |
| 75-79 | 9,282 | 4,405 | 4,877 | 6,865 | 3,431 | 3,434 | 1,381 | 589 | 792 | 232 | 98 | 134 |
| 80-84 | 6,336 | 2,790 | 3,546 | 4,781 | 2,184 | 2,597 | 881 | 366 | 515 | 131 | 51 | 80 |
| 85+ | 5,106 | 1,796 | 3,310 | 4,057 | 1,420 | 2,637 | 600 | 216 | 384 | 108 | 43 | 65 |
| Total | 723,133 | 375,797 | 347,336 | 490,347 | 258,503 | 231,844 | 107,793 | 54,407 | 53,386 | 25,632 | 14,183 | 11,449 |

| Age | Asian Alone | | | Native Hawaiian or Pacific Islander Alone | | | Two or More Races | | |
|--------------|---------------|---------------|---------------|---|--------------|--------------|-------------------|---------------|---------------|
| | Total | Male | Female | Total | Male | Female | Total | Male | Female |
| 0-4 | 2,530 | 1,370 | 1,160 | 873 | 429 | 444 | 8,293 | 4,239 | 4,054 |
| 5-9 | 2,834 | 1,408 | 1,426 | 886 | 428 | 458 | 7,226 | 3,731 | 3,495 |
| 10-14 | 3,070 | 1,527 | 1,543 | 845 | 447 | 398 | 6,403 | 3,276 | 3,127 |
| 15-19 | 3,035 | 1,538 | 1,497 | 762 | 406 | 356 | 5,306 | 2,728 | 2,578 |
| 20-24 | 3,083 | 1,623 | 1,460 | 839 | 427 | 412 | 4,380 | 2,223 | 2,157 |
| 25-29 | 3,119 | 1,567 | 1,552 | 822 | 426 | 396 | 3,863 | 1,890 | 1,973 |
| 30-34 | 2,747 | 1,197 | 1,550 | 674 | 359 | 315 | 3,104 | 1,525 | 1,579 |
| 35-39 | 2,905 | 1,301 | 1,604 | 504 | 260 | 244 | 2,381 | 1,120 | 1,261 |
| 40-44 | 3,022 | 1,342 | 1,680 | 482 | 235 | 247 | 1,995 | 996 | 999 |
| 45-49 | 3,209 | 1,484 | 1,725 | 429 | 211 | 218 | 1,918 | 948 | 970 |
| 50-54 | 3,141 | 1,448 | 1,693 | 347 | 201 | 146 | 1,785 | 838 | 947 |
| 55-59 | 2,711 | 1,245 | 1,466 | 253 | 118 | 135 | 1,439 | 693 | 746 |
| 60-64 | 2,092 | 879 | 1,213 | 185 | 93 | 92 | 1,010 | 530 | 480 |
| 65-69 | 1,325 | 570 | 755 | 120 | 58 | 62 | 524 | 258 | 266 |
| 70-74 | 832 | 335 | 497 | 53 | 26 | 27 | 317 | 158 | 159 |
| 75-79 | 549 | 187 | 362 | 35 | 15 | 20 | 220 | 85 | 135 |
| 80-84 | 382 | 122 | 260 | 23 | 11 | 12 | 138 | 56 | 82 |
| 85+ | 247 | 83 | 164 | 6 | 2 | 4 | 88 | 32 | 56 |
| Total | 40,833 | 19,226 | 21,607 | 8,138 | 4,152 | 3,986 | 50,390 | 25,326 | 25,064 |

Note: Modified race data.

Sources: Alaska Department of Labor and Workforce Development, Research and Analysis Section; and U.S. Census Bureau

Table 1.15**Alaska Population by Age, Race (Alone or in Combination), Ethnicity, and Sex, July 1, 2011**

| Age | Total Responses | | | White Alone or in Combination | | | Alaska Native or Amer. Indian Alone or in Comb. | | | Black or African American Alone or in Combination | | |
|--------------|-----------------|----------------|----------------|-------------------------------|----------------|----------------|---|---------------|---------------|---|---------------|---------------|
| | Total | Male | Female | Total | Male | Female | Total | Male | Female | Total | Male | Female |
| 0-4 | 64,742 | 33,324 | 31,418 | 38,406 | 19,686 | 18,720 | 15,673 | 8,111 | 7,562 | 4,290 | 2,218 | 2,072 |
| 5-9 | 59,663 | 30,615 | 29,048 | 35,633 | 18,423 | 17,210 | 13,913 | 7,117 | 6,796 | 3,802 | 1,923 | 1,879 |
| 10-14 | 58,480 | 30,040 | 28,440 | 35,157 | 18,054 | 17,103 | 13,575 | 7,015 | 6,560 | 3,601 | 1,816 | 1,785 |
| 15-19 | 56,510 | 29,395 | 27,115 | 34,772 | 18,158 | 16,614 | 13,080 | 6,753 | 6,327 | 3,227 | 1,704 | 1,523 |
| 20-24 | 59,971 | 32,498 | 27,473 | 38,649 | 21,323 | 17,326 | 12,491 | 6,359 | 6,132 | 3,483 | 2,015 | 1,468 |
| 25-29 | 61,449 | 32,367 | 29,082 | 42,191 | 22,426 | 19,765 | 11,123 | 5,660 | 5,463 | 2,979 | 1,669 | 1,310 |
| 30-34 | 53,851 | 27,870 | 25,981 | 37,868 | 19,805 | 18,063 | 8,911 | 4,499 | 4,412 | 2,626 | 1,497 | 1,129 |
| 35-39 | 47,382 | 24,444 | 22,938 | 33,368 | 17,448 | 15,920 | 7,633 | 3,822 | 3,811 | 2,161 | 1,223 | 938 |
| 40-44 | 49,291 | 25,644 | 23,647 | 35,722 | 18,826 | 16,896 | 7,514 | 3,810 | 3,704 | 1,921 | 1,123 | 798 |
| 45-49 | 54,321 | 28,067 | 26,254 | 39,464 | 20,681 | 18,783 | 8,770 | 4,380 | 4,390 | 1,911 | 1,053 | 858 |
| 50-54 | 58,487 | 30,326 | 28,161 | 44,342 | 23,320 | 21,022 | 8,310 | 4,054 | 4,256 | 1,848 | 1,051 | 797 |
| 55-59 | 53,483 | 27,899 | 25,584 | 41,667 | 22,123 | 19,544 | 6,922 | 3,385 | 3,537 | 1,555 | 845 | 710 |
| 60-64 | 40,481 | 21,563 | 18,918 | 31,754 | 17,368 | 14,386 | 5,224 | 2,571 | 2,653 | 996 | 534 | 462 |
| 65-69 | 24,255 | 12,746 | 11,509 | 18,933 | 10,231 | 8,702 | 3,195 | 1,547 | 1,648 | 562 | 283 | 279 |
| 70-74 | 14,747 | 7,562 | 7,185 | 11,195 | 5,922 | 5,273 | 2,242 | 1,091 | 1,151 | 351 | 156 | 195 |
| 75-79 | 9,509 | 4,490 | 5,019 | 7,058 | 3,510 | 3,548 | 1,565 | 659 | 906 | 247 | 102 | 145 |
| 80-84 | 6,476 | 2,846 | 3,630 | 4,913 | 2,238 | 2,675 | 1,001 | 418 | 583 | 138 | 53 | 85 |
| 85+ | 5,198 | 1,830 | 3,368 | 4,133 | 1,447 | 2,686 | 675 | 245 | 430 | 116 | 45 | 71 |
| Total | 778,296 | 403,526 | 374,770 | 535,225 | 280,989 | 254,236 | 141,817 | 71,496 | 70,321 | 35,814 | 19,310 | 16,504 |

| Age | Asian Alone or in Combination | | | Native Hawaiian or Pac. Is. Alone or in Combination | | | Hispanic or Latino Origin | | |
|--------------|-------------------------------|---------------|---------------|---|--------------|--------------|---------------------------|---------------|---------------|
| | Total | Male | Female | Total | Male | Female | Total | Male | Female |
| 0-4 | 4,783 | 2,519 | 2,264 | 1,590 | 790 | 800 | 5,191 | 2,627 | 2,564 |
| 5-9 | 4,805 | 2,406 | 2,399 | 1,510 | 746 | 764 | 4,271 | 2,214 | 2,057 |
| 10-14 | 4,809 | 2,441 | 2,368 | 1,338 | 714 | 624 | 3,966 | 2,014 | 1,952 |
| 15-19 | 4,302 | 2,185 | 2,117 | 1,129 | 595 | 534 | 3,874 | 2,038 | 1,836 |
| 20-24 | 4,193 | 2,214 | 1,979 | 1,155 | 587 | 568 | 4,183 | 2,343 | 1,840 |
| 25-29 | 4,049 | 2,031 | 2,018 | 1,107 | 581 | 526 | 3,976 | 2,114 | 1,862 |
| 30-34 | 3,549 | 1,586 | 1,963 | 897 | 483 | 414 | 3,230 | 1,662 | 1,568 |
| 35-39 | 3,532 | 1,606 | 1,926 | 688 | 345 | 343 | 2,639 | 1,332 | 1,307 |
| 40-44 | 3,512 | 1,584 | 1,928 | 622 | 301 | 321 | 2,538 | 1,282 | 1,256 |
| 45-49 | 3,604 | 1,670 | 1,934 | 572 | 283 | 289 | 2,327 | 1,142 | 1,185 |
| 50-54 | 3,508 | 1,630 | 1,878 | 479 | 271 | 208 | 2,087 | 1,089 | 998 |
| 55-59 | 2,985 | 1,385 | 1,600 | 354 | 161 | 193 | 1,549 | 814 | 735 |
| 60-64 | 2,265 | 972 | 1,293 | 242 | 118 | 124 | 1,063 | 519 | 544 |
| 65-69 | 1,412 | 612 | 800 | 153 | 73 | 80 | 646 | 316 | 330 |
| 70-74 | 895 | 366 | 529 | 64 | 27 | 37 | 385 | 173 | 212 |
| 75-79 | 591 | 199 | 392 | 48 | 20 | 28 | 219 | 101 | 118 |
| 80-84 | 394 | 124 | 270 | 30 | 13 | 17 | 117 | 43 | 74 |
| 85+ | 263 | 90 | 173 | 11 | 3 | 8 | 97 | 27 | 70 |
| Total | 53,451 | 25,620 | 27,831 | 11,989 | 6,111 | 5,878 | 42,358 | 21,850 | 20,508 |

Note: Modified race data. "Total Responses" are greater than total population because individuals may report more than one race group.

Sources: Alaska Department of Labor and Workforce Development, Research and Analysis Section; and U.S. Census Bureau

Table 1.16**Alaska Population by Age, Race (Alone), and Sex, July 1, 2012**

| Age | Total Population | | | White Alone | | | Alaska Native or American Indian Alone | | | Black or African American Alone | | |
|--------------|------------------|----------------|----------------|----------------|----------------|----------------|--|---------------|---------------|---------------------------------|---------------|---------------|
| | Total | Male | Female | Total | Male | Female | Total | Male | Female | Total | Male | Female |
| 0-4 | 54,725 | 28,168 | 26,557 | 30,553 | 15,597 | 14,956 | 10,757 | 5,573 | 5,184 | 2,098 | 1,119 | 979 |
| 5-9 | 52,731 | 27,013 | 25,718 | 29,838 | 15,394 | 14,444 | 9,641 | 4,972 | 4,669 | 1,904 | 936 | 968 |
| 10-14 | 51,294 | 26,342 | 24,952 | 29,178 | 15,044 | 14,134 | 9,581 | 4,889 | 4,692 | 1,984 | 1,023 | 961 |
| 15-19 | 49,742 | 26,073 | 23,669 | 29,103 | 15,307 | 13,796 | 9,240 | 4,835 | 4,405 | 2,109 | 1,135 | 974 |
| 20-24 | 55,725 | 29,968 | 25,757 | 34,739 | 19,164 | 15,575 | 9,553 | 4,771 | 4,782 | 3,009 | 1,851 | 1,158 |
| 25-29 | 57,806 | 30,394 | 27,412 | 38,790 | 20,620 | 18,170 | 8,520 | 4,383 | 4,137 | 2,573 | 1,491 | 1,082 |
| 30-34 | 52,440 | 27,253 | 25,187 | 36,320 | 19,164 | 17,156 | 6,980 | 3,536 | 3,444 | 2,320 | 1,377 | 943 |
| 35-39 | 45,365 | 23,346 | 22,019 | 31,391 | 16,403 | 14,988 | 6,061 | 3,075 | 2,986 | 1,980 | 1,164 | 816 |
| 40-44 | 46,968 | 24,427 | 22,541 | 33,663 | 17,795 | 15,868 | 5,773 | 2,896 | 2,877 | 1,827 | 1,057 | 770 |
| 45-49 | 50,275 | 26,018 | 24,257 | 35,833 | 18,798 | 17,035 | 7,092 | 3,590 | 3,502 | 1,741 | 999 | 742 |
| 50-54 | 56,398 | 29,243 | 27,155 | 42,238 | 22,229 | 20,009 | 6,929 | 3,407 | 3,522 | 1,824 | 1,033 | 791 |
| 55-59 | 53,442 | 27,781 | 25,661 | 41,306 | 21,833 | 19,473 | 5,915 | 2,897 | 3,018 | 1,546 | 858 | 688 |
| 60-64 | 40,943 | 21,656 | 19,287 | 31,837 | 17,328 | 14,509 | 4,569 | 2,200 | 2,369 | 1,040 | 550 | 490 |
| 65-69 | 26,362 | 13,968 | 12,394 | 20,678 | 11,266 | 9,412 | 2,903 | 1,378 | 1,525 | 582 | 278 | 304 |
| 70-74 | 15,551 | 7,922 | 7,629 | 11,930 | 6,268 | 5,662 | 1,972 | 943 | 1,029 | 362 | 159 | 203 |
| 75-79 | 9,814 | 4,711 | 5,103 | 7,296 | 3,685 | 3,611 | 1,377 | 596 | 781 | 271 | 118 | 153 |
| 80-84 | 6,588 | 2,918 | 3,670 | 4,970 | 2,296 | 2,674 | 891 | 374 | 517 | 168 | 58 | 110 |
| 85+ | 5,461 | 1,945 | 3,516 | 4,338 | 1,545 | 2,793 | 612 | 230 | 382 | 130 | 46 | 84 |
| Total | 731,630 | 379,146 | 352,484 | 494,001 | 259,736 | 234,265 | 108,366 | 54,545 | 53,821 | 27,468 | 15,252 | 12,216 |

| Age | Asian Alone | | | Native Hawaiian or Pacific Islander Alone | | | Two or More Races | | |
|--------------|---------------|---------------|---------------|---|--------------|--------------|-------------------|---------------|---------------|
| | Total | Male | Female | Total | Male | Female | Total | Male | Female |
| 0-4 | 2,529 | 1,376 | 1,153 | 921 | 459 | 462 | 7,867 | 4,044 | 3,823 |
| 5-9 | 2,884 | 1,419 | 1,465 | 934 | 437 | 497 | 7,530 | 3,855 | 3,675 |
| 10-14 | 3,189 | 1,596 | 1,593 | 879 | 471 | 408 | 6,483 | 3,319 | 3,164 |
| 15-19 | 3,107 | 1,586 | 1,521 | 810 | 437 | 373 | 5,373 | 2,773 | 2,600 |
| 20-24 | 3,165 | 1,637 | 1,528 | 843 | 414 | 429 | 4,416 | 2,131 | 2,285 |
| 25-29 | 3,205 | 1,585 | 1,620 | 857 | 420 | 437 | 3,861 | 1,895 | 1,966 |
| 30-34 | 2,886 | 1,263 | 1,623 | 721 | 373 | 348 | 3,213 | 1,540 | 1,673 |
| 35-39 | 2,950 | 1,295 | 1,655 | 545 | 282 | 263 | 2,438 | 1,127 | 1,311 |
| 40-44 | 3,149 | 1,441 | 1,708 | 518 | 250 | 268 | 2,038 | 988 | 1,050 |
| 45-49 | 3,279 | 1,469 | 1,810 | 457 | 227 | 230 | 1,873 | 935 | 938 |
| 50-54 | 3,213 | 1,520 | 1,693 | 396 | 221 | 175 | 1,798 | 833 | 965 |
| 55-59 | 2,893 | 1,327 | 1,566 | 267 | 133 | 134 | 1,515 | 733 | 782 |
| 60-64 | 2,243 | 939 | 1,304 | 211 | 104 | 107 | 1,043 | 535 | 508 |
| 65-69 | 1,474 | 673 | 801 | 125 | 63 | 62 | 600 | 310 | 290 |
| 70-74 | 892 | 360 | 532 | 61 | 26 | 35 | 334 | 166 | 168 |
| 75-79 | 611 | 200 | 411 | 33 | 18 | 15 | 226 | 94 | 132 |
| 80-84 | 390 | 131 | 259 | 28 | 10 | 18 | 141 | 49 | 92 |
| 85+ | 270 | 84 | 186 | 10 | 5 | 5 | 101 | 35 | 66 |
| Total | 42,329 | 19,901 | 22,428 | 8,616 | 4,350 | 4,266 | 50,850 | 25,362 | 25,488 |

Note: Modified race data.

Sources: Alaska Department of Labor and Workforce Development, Research and Analysis Section; and U.S. Census Bureau

Table 1.17**Alaska Population by Age, Race (Alone or in Combination), Ethnicity, and Sex, July 1, 2012**

| Age | Total Responses | | | White Alone or in Combination | | | Alaska Native or Amer. Indian Alone or in Comb. | | | Black or African American Alone or in Combination | | |
|--------------|-----------------|----------------|----------------|-------------------------------|----------------|----------------|---|---------------|---------------|---|---------------|---------------|
| | Total | Male | Female | Total | Male | Female | Total | Male | Female | Total | Male | Female |
| 0-4 | 63,666 | 32,784 | 30,882 | 37,547 | 19,196 | 18,351 | 15,581 | 8,067 | 7,514 | 4,246 | 2,218 | 2,028 |
| 5-9 | 61,189 | 31,340 | 29,849 | 36,494 | 18,807 | 17,687 | 14,224 | 7,333 | 6,891 | 3,897 | 1,966 | 1,931 |
| 10-14 | 58,518 | 30,049 | 28,469 | 34,943 | 17,982 | 16,961 | 13,509 | 6,918 | 6,591 | 3,669 | 1,847 | 1,822 |
| 15-19 | 55,664 | 29,111 | 26,553 | 33,958 | 17,806 | 16,152 | 12,745 | 6,658 | 6,087 | 3,346 | 1,749 | 1,597 |
| 20-24 | 60,483 | 32,263 | 28,220 | 38,626 | 21,024 | 17,602 | 12,497 | 6,166 | 6,331 | 3,908 | 2,299 | 1,609 |
| 25-29 | 61,927 | 32,392 | 29,535 | 42,266 | 22,307 | 19,959 | 11,164 | 5,666 | 5,498 | 3,213 | 1,792 | 1,421 |
| 30-34 | 55,879 | 28,907 | 26,972 | 39,206 | 20,534 | 18,672 | 9,147 | 4,570 | 4,577 | 2,836 | 1,636 | 1,200 |
| 35-39 | 47,984 | 24,559 | 23,425 | 33,582 | 17,413 | 16,169 | 7,745 | 3,842 | 3,903 | 2,310 | 1,328 | 982 |
| 40-44 | 49,158 | 25,486 | 23,672 | 35,488 | 18,667 | 16,821 | 7,285 | 3,636 | 3,649 | 2,050 | 1,176 | 874 |
| 45-49 | 52,269 | 27,001 | 25,268 | 37,500 | 19,620 | 17,880 | 8,554 | 4,328 | 4,226 | 1,940 | 1,099 | 841 |
| 50-54 | 58,292 | 30,114 | 28,178 | 43,815 | 22,953 | 20,862 | 8,357 | 4,058 | 4,299 | 1,993 | 1,107 | 886 |
| 55-59 | 55,032 | 28,547 | 26,485 | 42,635 | 22,471 | 20,164 | 7,146 | 3,488 | 3,658 | 1,681 | 931 | 750 |
| 60-64 | 42,040 | 22,216 | 19,824 | 32,760 | 17,809 | 14,951 | 5,450 | 2,652 | 2,798 | 1,133 | 590 | 543 |
| 65-69 | 26,999 | 14,301 | 12,698 | 21,211 | 11,546 | 9,665 | 3,424 | 1,649 | 1,775 | 638 | 312 | 326 |
| 70-74 | 15,891 | 8,088 | 7,803 | 12,207 | 6,410 | 5,797 | 2,267 | 1,093 | 1,174 | 389 | 166 | 223 |
| 75-79 | 10,047 | 4,805 | 5,242 | 7,498 | 3,773 | 3,725 | 1,570 | 675 | 895 | 285 | 122 | 163 |
| 80-84 | 6,735 | 2,968 | 3,767 | 5,102 | 2,344 | 2,758 | 1,011 | 418 | 593 | 179 | 60 | 119 |
| 85+ | 5,558 | 1,978 | 3,580 | 4,422 | 1,573 | 2,849 | 694 | 260 | 434 | 139 | 48 | 91 |
| Total | 787,331 | 406,909 | 380,422 | 539,260 | 282,235 | 257,025 | 142,370 | 71,477 | 70,893 | 37,852 | 20,446 | 17,406 |

| Age | Asian Alone or in Combination | | | Native Hawaiian or Pac. Is. Alone or in Combination | | | Hispanic or Latino Origin | | |
|--------------|-------------------------------|---------------|---------------|---|--------------|--------------|---------------------------|---------------|---------------|
| | Total | Male | Female | Total | Male | Female | Total | Male | Female |
| 0-4 | 4,681 | 2,488 | 2,193 | 1,611 | 815 | 796 | 5,615 | 2,859 | 2,756 |
| 5-9 | 4,972 | 2,465 | 2,507 | 1,602 | 769 | 833 | 4,462 | 2,310 | 2,152 |
| 10-14 | 4,999 | 2,547 | 2,452 | 1,398 | 755 | 643 | 4,152 | 2,128 | 2,024 |
| 15-19 | 4,425 | 2,263 | 2,162 | 1,190 | 635 | 555 | 3,967 | 2,066 | 1,901 |
| 20-24 | 4,287 | 2,207 | 2,080 | 1,165 | 567 | 598 | 4,530 | 2,550 | 1,980 |
| 25-29 | 4,141 | 2,051 | 2,090 | 1,143 | 576 | 567 | 4,316 | 2,336 | 1,980 |
| 30-34 | 3,730 | 1,665 | 2,065 | 960 | 502 | 458 | 3,728 | 1,956 | 1,772 |
| 35-39 | 3,608 | 1,607 | 2,001 | 739 | 369 | 370 | 2,902 | 1,456 | 1,446 |
| 40-44 | 3,668 | 1,689 | 1,979 | 667 | 318 | 349 | 2,719 | 1,377 | 1,342 |
| 45-49 | 3,672 | 1,656 | 2,016 | 603 | 298 | 305 | 2,386 | 1,185 | 1,201 |
| 50-54 | 3,594 | 1,704 | 1,890 | 533 | 292 | 241 | 2,261 | 1,140 | 1,121 |
| 55-59 | 3,192 | 1,476 | 1,716 | 378 | 181 | 197 | 1,766 | 894 | 872 |
| 60-64 | 2,430 | 1,037 | 1,393 | 267 | 128 | 139 | 1,139 | 575 | 564 |
| 65-69 | 1,570 | 718 | 852 | 156 | 76 | 80 | 796 | 368 | 428 |
| 70-74 | 956 | 391 | 565 | 72 | 28 | 44 | 500 | 227 | 273 |
| 75-79 | 648 | 212 | 436 | 46 | 23 | 23 | 270 | 128 | 142 |
| 80-84 | 407 | 133 | 274 | 36 | 13 | 23 | 177 | 68 | 109 |
| 85+ | 288 | 91 | 197 | 15 | 6 | 9 | 95 | 30 | 65 |
| Total | 55,268 | 26,400 | 28,868 | 12,581 | 6,351 | 6,230 | 45,781 | 23,653 | 22,128 |

Note: Modified race data. "Total Responses" are greater than total population because individuals may report more than one race group.

Sources: Alaska Department of Labor and Workforce Development, Research and Analysis Section; and U.S. Census Bureau

Table 1.18**Alaska Population by Age, Race (Alone), and Sex, July 1, 2013**

| Age | Total Population | | | White Alone | | | Alaska Native or American Indian Alone | | | Black or African American Alone | | |
|--------------|------------------|----------------|----------------|----------------|----------------|----------------|--|---------------|---------------|---------------------------------|---------------|---------------|
| | Total | Male | Female | Total | Male | Female | Total | Male | Female | Total | Male | Female |
| 0-4 | 54,232 | 27,977 | 26,255 | 30,069 | 15,405 | 14,664 | 10,989 | 5,634 | 5,355 | 2,182 | 1,178 | 1,004 |
| 5-9 | 53,852 | 27,624 | 26,228 | 30,443 | 15,675 | 14,768 | 9,898 | 5,148 | 4,750 | 1,914 | 961 | 953 |
| 10-14 | 51,828 | 26,708 | 25,120 | 29,327 | 15,217 | 14,110 | 9,628 | 4,918 | 4,710 | 1,954 | 1,000 | 954 |
| 15-19 | 49,052 | 25,597 | 23,455 | 28,493 | 14,969 | 13,524 | 9,188 | 4,770 | 4,418 | 2,116 | 1,132 | 984 |
| 20-24 | 54,939 | 29,500 | 25,439 | 34,253 | 18,911 | 15,342 | 9,149 | 4,542 | 4,607 | 3,246 | 2,029 | 1,217 |
| 25-29 | 57,186 | 29,783 | 27,403 | 38,124 | 20,181 | 17,943 | 8,514 | 4,301 | 4,213 | 2,583 | 1,479 | 1,104 |
| 30-34 | 54,289 | 28,103 | 26,186 | 37,364 | 19,594 | 17,770 | 7,318 | 3,710 | 3,608 | 2,513 | 1,514 | 999 |
| 35-39 | 45,857 | 23,668 | 22,189 | 31,681 | 16,681 | 15,000 | 6,092 | 3,069 | 3,023 | 1,953 | 1,163 | 790 |
| 40-44 | 46,515 | 23,934 | 22,581 | 33,078 | 17,294 | 15,784 | 5,793 | 2,899 | 2,894 | 1,768 | 1,017 | 751 |
| 45-49 | 47,916 | 24,718 | 23,198 | 33,942 | 17,699 | 16,243 | 6,750 | 3,461 | 3,289 | 1,678 | 1,001 | 677 |
| 50-54 | 56,015 | 29,017 | 26,998 | 41,547 | 21,852 | 19,695 | 7,081 | 3,483 | 3,598 | 1,815 | 1,021 | 794 |
| 55-59 | 54,109 | 27,872 | 26,237 | 41,497 | 21,710 | 19,787 | 6,079 | 2,962 | 3,117 | 1,606 | 884 | 722 |
| 60-64 | 43,047 | 22,790 | 20,257 | 33,340 | 18,145 | 15,195 | 4,812 | 2,346 | 2,466 | 1,180 | 635 | 545 |
| 65-69 | 28,057 | 14,815 | 13,242 | 21,884 | 11,921 | 9,963 | 3,140 | 1,450 | 1,690 | 619 | 293 | 326 |
| 70-74 | 16,920 | 8,654 | 8,266 | 13,107 | 6,860 | 6,247 | 2,015 | 993 | 1,022 | 409 | 179 | 230 |
| 75-79 | 10,395 | 5,055 | 5,340 | 7,751 | 3,957 | 3,794 | 1,414 | 622 | 792 | 309 | 130 | 179 |
| 80-84 | 6,763 | 2,993 | 3,770 | 5,031 | 2,350 | 2,681 | 936 | 372 | 564 | 192 | 74 | 118 |
| 85+ | 5,644 | 2,050 | 3,594 | 4,459 | 1,628 | 2,831 | 598 | 230 | 368 | 177 | 62 | 115 |
| Total | 736,616 | 380,858 | 355,758 | 495,390 | 260,049 | 235,341 | 109,394 | 54,910 | 54,484 | 28,214 | 15,752 | 12,462 |

| Age | Asian Alone | | | Native Hawaiian or Pacific Islander Alone | | | Two or More Races | | |
|--------------|---------------|---------------|---------------|---|--------------|--------------|-------------------|---------------|---------------|
| | Total | Male | Female | Total | Male | Female | Total | Male | Female |
| 0-4 | 2,592 | 1,384 | 1,208 | 929 | 473 | 456 | 7,471 | 3,903 | 3,568 |
| 5-9 | 2,919 | 1,461 | 1,458 | 948 | 449 | 499 | 7,730 | 3,930 | 3,800 |
| 10-14 | 3,313 | 1,641 | 1,672 | 941 | 489 | 452 | 6,665 | 3,443 | 3,222 |
| 15-19 | 3,132 | 1,584 | 1,548 | 817 | 452 | 365 | 5,306 | 2,690 | 2,616 |
| 20-24 | 3,157 | 1,616 | 1,541 | 816 | 376 | 440 | 4,318 | 2,026 | 2,292 |
| 25-29 | 3,310 | 1,607 | 1,703 | 899 | 426 | 473 | 3,756 | 1,789 | 1,967 |
| 30-34 | 2,989 | 1,305 | 1,684 | 782 | 398 | 384 | 3,323 | 1,582 | 1,741 |
| 35-39 | 3,003 | 1,281 | 1,722 | 597 | 312 | 285 | 2,531 | 1,162 | 1,369 |
| 40-44 | 3,246 | 1,463 | 1,783 | 521 | 248 | 273 | 2,109 | 1,013 | 1,096 |
| 45-49 | 3,277 | 1,445 | 1,832 | 461 | 229 | 232 | 1,808 | 883 | 925 |
| 50-54 | 3,353 | 1,580 | 1,773 | 409 | 224 | 185 | 1,810 | 857 | 953 |
| 55-59 | 3,032 | 1,412 | 1,620 | 300 | 145 | 155 | 1,595 | 759 | 836 |
| 60-64 | 2,433 | 1,026 | 1,407 | 214 | 112 | 102 | 1,068 | 526 | 542 |
| 65-69 | 1,615 | 732 | 883 | 131 | 63 | 68 | 668 | 356 | 312 |
| 70-74 | 949 | 412 | 537 | 74 | 31 | 43 | 366 | 179 | 187 |
| 75-79 | 657 | 225 | 432 | 40 | 21 | 19 | 224 | 100 | 124 |
| 80-84 | 419 | 128 | 291 | 25 | 10 | 15 | 160 | 59 | 101 |
| 85+ | 287 | 90 | 197 | 16 | 6 | 10 | 107 | 34 | 73 |
| Total | 43,683 | 20,392 | 23,291 | 8,920 | 4,464 | 4,456 | 51,015 | 25,291 | 25,724 |

Note: Modified race data.

Sources: Alaska Department of Labor and Workforce Development, Research and Analysis Section; and U.S. Census Bureau

Table 1.19**Alaska Population by Age, Race (Alone or in Combination), Ethnicity, and Sex, July 1, 2013**

| Age | Total Responses | | | White Alone or in Combination | | | Alaska Native or Amer. Indian Alone or in Comb. | | | Black or African American Alone or in Combination | | |
|--------------|-----------------|----------------|----------------|-------------------------------|----------------|----------------|---|---------------|---------------|---|---------------|---------------|
| | Total | Male | Female | Total | Male | Female | Total | Male | Female | Total | Male | Female |
| 0-4 | 62,749 | 32,450 | 30,299 | 36,717 | 18,889 | 17,828 | 15,570 | 8,037 | 7,533 | 4,221 | 2,243 | 1,978 |
| 5-9 | 62,537 | 32,034 | 30,503 | 37,265 | 19,152 | 18,113 | 14,538 | 7,521 | 7,017 | 3,985 | 2,022 | 1,963 |
| 10-14 | 59,266 | 30,564 | 28,702 | 35,265 | 18,274 | 16,991 | 13,584 | 6,985 | 6,599 | 3,709 | 1,866 | 1,843 |
| 15-19 | 54,907 | 28,549 | 26,358 | 33,299 | 17,396 | 15,903 | 12,578 | 6,508 | 6,070 | 3,374 | 1,740 | 1,634 |
| 20-24 | 59,620 | 31,694 | 27,926 | 38,052 | 20,680 | 17,372 | 12,034 | 5,866 | 6,168 | 4,157 | 2,475 | 1,682 |
| 25-29 | 61,213 | 31,680 | 29,533 | 41,510 | 21,773 | 19,737 | 11,052 | 5,497 | 5,555 | 3,215 | 1,768 | 1,447 |
| 30-34 | 57,845 | 29,787 | 28,058 | 40,348 | 20,999 | 19,349 | 9,537 | 4,757 | 4,780 | 3,051 | 1,780 | 1,271 |
| 35-39 | 48,572 | 24,912 | 23,660 | 33,962 | 17,727 | 16,235 | 7,814 | 3,847 | 3,967 | 2,303 | 1,335 | 968 |
| 40-44 | 48,775 | 25,016 | 23,759 | 34,963 | 18,185 | 16,778 | 7,328 | 3,646 | 3,682 | 2,003 | 1,141 | 862 |
| 45-49 | 49,848 | 25,660 | 24,188 | 35,552 | 18,480 | 17,072 | 8,137 | 4,151 | 3,986 | 1,874 | 1,098 | 776 |
| 50-54 | 57,919 | 29,913 | 28,006 | 43,128 | 22,595 | 20,533 | 8,502 | 4,142 | 4,360 | 1,992 | 1,100 | 892 |
| 55-59 | 55,784 | 28,668 | 27,116 | 42,902 | 22,375 | 20,527 | 7,371 | 3,572 | 3,799 | 1,749 | 960 | 789 |
| 60-64 | 44,174 | 23,342 | 20,832 | 34,287 | 18,619 | 15,668 | 5,707 | 2,785 | 2,922 | 1,279 | 678 | 601 |
| 65-69 | 28,764 | 15,201 | 13,563 | 22,471 | 12,236 | 10,235 | 3,714 | 1,759 | 1,955 | 683 | 334 | 349 |
| 70-74 | 17,301 | 8,839 | 8,462 | 13,410 | 7,015 | 6,395 | 2,344 | 1,156 | 1,188 | 438 | 188 | 250 |
| 75-79 | 10,629 | 5,154 | 5,475 | 7,948 | 4,050 | 3,898 | 1,604 | 706 | 898 | 322 | 135 | 187 |
| 80-84 | 6,933 | 3,051 | 3,882 | 5,182 | 2,404 | 2,778 | 1,076 | 426 | 650 | 207 | 77 | 130 |
| 85+ | 5,752 | 2,082 | 3,670 | 4,550 | 1,655 | 2,895 | 685 | 259 | 426 | 188 | 64 | 124 |
| Total | 792,588 | 408,596 | 383,992 | 540,811 | 282,504 | 258,307 | 143,175 | 71,620 | 71,555 | 38,750 | 21,004 | 17,746 |

| Age | Asian Alone or in Combination | | | Native Hawaiian or Pac. Is. Alone or in Combination | | | Hispanic or Latino Origin | | |
|--------------|-------------------------------|---------------|---------------|---|--------------|--------------|---------------------------|---------------|---------------|
| | Total | Male | Female | Total | Male | Female | Total | Male | Female |
| 0-4 | 4,644 | 2,464 | 2,180 | 1,597 | 817 | 780 | 5,962 | 3,067 | 2,895 |
| 5-9 | 5,100 | 2,546 | 2,554 | 1,649 | 793 | 856 | 4,744 | 2,426 | 2,318 |
| 10-14 | 5,225 | 2,653 | 2,572 | 1,483 | 786 | 697 | 4,234 | 2,224 | 2,010 |
| 15-19 | 4,466 | 2,260 | 2,206 | 1,190 | 645 | 545 | 4,163 | 2,182 | 1,981 |
| 20-24 | 4,254 | 2,155 | 2,099 | 1,123 | 518 | 605 | 4,811 | 2,729 | 2,082 |
| 25-29 | 4,253 | 2,066 | 2,187 | 1,183 | 576 | 607 | 4,509 | 2,481 | 2,028 |
| 30-34 | 3,881 | 1,724 | 2,157 | 1,028 | 527 | 501 | 4,126 | 2,179 | 1,947 |
| 35-39 | 3,692 | 1,604 | 2,088 | 801 | 399 | 402 | 3,136 | 1,612 | 1,524 |
| 40-44 | 3,806 | 1,726 | 2,080 | 675 | 318 | 357 | 2,769 | 1,416 | 1,353 |
| 45-49 | 3,679 | 1,632 | 2,047 | 606 | 299 | 307 | 2,433 | 1,183 | 1,250 |
| 50-54 | 3,745 | 1,776 | 1,969 | 552 | 300 | 252 | 2,318 | 1,165 | 1,153 |
| 55-59 | 3,348 | 1,569 | 1,779 | 414 | 192 | 222 | 1,844 | 940 | 904 |
| 60-64 | 2,628 | 1,125 | 1,503 | 273 | 135 | 138 | 1,272 | 637 | 635 |
| 65-69 | 1,727 | 789 | 938 | 169 | 83 | 86 | 822 | 381 | 441 |
| 70-74 | 1,022 | 447 | 575 | 87 | 33 | 54 | 530 | 234 | 296 |
| 75-79 | 700 | 238 | 462 | 55 | 25 | 30 | 307 | 142 | 165 |
| 80-84 | 435 | 131 | 304 | 33 | 13 | 20 | 206 | 85 | 121 |
| 85+ | 307 | 97 | 210 | 22 | 7 | 15 | 137 | 44 | 93 |
| Total | 56,912 | 27,002 | 29,910 | 12,940 | 6,466 | 6,474 | 48,323 | 25,127 | 23,196 |

Note: Modified race data. "Total Responses" are greater than total population because individuals may report more than one race group.

Sources: Alaska Department of Labor and Workforce Development, Research and Analysis Section; and U.S. Census Bureau

Table 1.20

Alaska Population by Age, Race (Alone), and Sex, July 1, 2014

| Age | Total Population | | | White Alone | | | Alaska Native or American Indian Alone | | | Black or African American Alone | | |
|--------------|------------------|----------------|----------------|----------------|----------------|----------------|--|---------------|---------------|---------------------------------|---------------|---------------|
| | Total | Male | Female | Total | Male | Female | Total | Male | Female | Total | Male | Female |
| 0-4 | 53,432 | 27,253 | 26,179 | 29,796 | 15,106 | 14,690 | 10,597 | 5,371 | 5,226 | 2,224 | 1,151 | 1,073 |
| 5-9 | 54,011 | 28,032 | 25,979 | 30,355 | 15,763 | 14,592 | 10,070 | 5,282 | 4,788 | 1,877 | 970 | 907 |
| 10-14 | 51,250 | 26,319 | 24,931 | 28,806 | 14,927 | 13,879 | 9,545 | 4,842 | 4,703 | 1,904 | 998 | 906 |
| 15-19 | 48,511 | 25,349 | 23,162 | 27,854 | 14,612 | 13,242 | 9,129 | 4,755 | 4,374 | 2,027 | 1,089 | 938 |
| 20-24 | 54,502 | 29,575 | 24,927 | 33,738 | 18,775 | 14,963 | 8,986 | 4,520 | 4,466 | 3,261 | 2,069 | 1,192 |
| 25-29 | 57,749 | 30,218 | 27,531 | 38,060 | 20,207 | 17,853 | 8,713 | 4,409 | 4,304 | 2,644 | 1,589 | 1,055 |
| 30-34 | 55,951 | 28,966 | 26,985 | 38,393 | 20,295 | 18,098 | 7,655 | 3,849 | 3,806 | 2,494 | 1,468 | 1,026 |
| 35-39 | 46,633 | 24,110 | 22,523 | 32,124 | 16,878 | 15,246 | 6,251 | 3,202 | 3,049 | 1,983 | 1,175 | 808 |
| 40-44 | 45,192 | 23,361 | 21,831 | 31,766 | 16,663 | 15,103 | 5,772 | 2,936 | 2,836 | 1,748 | 1,007 | 741 |
| 45-49 | 46,349 | 23,952 | 22,397 | 32,730 | 17,148 | 15,582 | 6,380 | 3,247 | 3,133 | 1,655 | 984 | 671 |
| 50-54 | 54,581 | 28,385 | 26,196 | 40,011 | 21,117 | 18,894 | 7,087 | 3,535 | 3,552 | 1,748 | 974 | 774 |
| 55-59 | 53,651 | 27,557 | 26,094 | 40,895 | 21,332 | 19,563 | 6,183 | 3,006 | 3,177 | 1,601 | 891 | 710 |
| 60-64 | 44,302 | 23,318 | 20,984 | 34,226 | 18,439 | 15,787 | 4,938 | 2,416 | 2,522 | 1,232 | 687 | 545 |
| 65-69 | 29,677 | 15,669 | 14,008 | 23,000 | 12,544 | 10,456 | 3,352 | 1,555 | 1,797 | 675 | 334 | 341 |
| 70-74 | 18,038 | 9,211 | 8,827 | 14,042 | 7,358 | 6,684 | 2,159 | 1,040 | 1,119 | 400 | 178 | 222 |
| 75-79 | 10,765 | 5,268 | 5,497 | 8,044 | 4,106 | 3,938 | 1,440 | 658 | 782 | 325 | 140 | 185 |
| 80-84 | 6,885 | 3,078 | 3,807 | 5,105 | 2,413 | 2,692 | 978 | 383 | 595 | 175 | 72 | 103 |
| 85+ | 5,875 | 2,168 | 3,707 | 4,644 | 1,720 | 2,924 | 630 | 251 | 379 | 139 | 45 | 94 |
| Total | 737,354 | 381,789 | 355,565 | 493,589 | 259,403 | 234,186 | 109,865 | 55,257 | 54,608 | 28,112 | 15,821 | 12,291 |

| Age | Asian Alone | | | Native Hawaiian or Pacific Islander Alone | | | Two or More Races | | |
|--------------|---------------|---------------|---------------|---|--------------|--------------|-------------------|---------------|---------------|
| | Total | Male | Female | Total | Male | Female | Total | Male | Female |
| 0-4 | 2,612 | 1,365 | 1,247 | 925 | 482 | 443 | 7,278 | 3,778 | 3,500 |
| 5-9 | 2,911 | 1,500 | 1,411 | 956 | 465 | 491 | 7,842 | 4,052 | 3,790 |
| 10-14 | 3,407 | 1,679 | 1,728 | 924 | 481 | 443 | 6,664 | 3,392 | 3,272 |
| 15-19 | 3,211 | 1,620 | 1,591 | 850 | 465 | 385 | 5,440 | 2,808 | 2,632 |
| 20-24 | 3,297 | 1,713 | 1,584 | 847 | 391 | 456 | 4,373 | 2,107 | 2,266 |
| 25-29 | 3,505 | 1,714 | 1,791 | 932 | 439 | 493 | 3,895 | 1,860 | 2,035 |
| 30-34 | 3,158 | 1,358 | 1,800 | 822 | 403 | 419 | 3,429 | 1,593 | 1,836 |
| 35-39 | 3,016 | 1,284 | 1,732 | 643 | 330 | 313 | 2,616 | 1,241 | 1,375 |
| 40-44 | 3,294 | 1,470 | 1,824 | 531 | 263 | 268 | 2,081 | 1,022 | 1,059 |
| 45-49 | 3,277 | 1,446 | 1,831 | 486 | 236 | 250 | 1,821 | 891 | 930 |
| 50-54 | 3,455 | 1,626 | 1,829 | 473 | 266 | 207 | 1,807 | 867 | 940 |
| 55-59 | 3,048 | 1,423 | 1,625 | 298 | 142 | 156 | 1,626 | 763 | 863 |
| 60-64 | 2,531 | 1,096 | 1,435 | 223 | 110 | 113 | 1,152 | 570 | 582 |
| 65-69 | 1,774 | 774 | 1,000 | 136 | 72 | 64 | 740 | 390 | 350 |
| 70-74 | 963 | 405 | 558 | 80 | 38 | 42 | 394 | 192 | 202 |
| 75-79 | 682 | 232 | 450 | 42 | 21 | 21 | 232 | 111 | 121 |
| 80-84 | 438 | 138 | 300 | 28 | 11 | 17 | 161 | 61 | 100 |
| 85+ | 331 | 109 | 222 | 20 | 8 | 12 | 111 | 35 | 76 |
| Total | 44,910 | 20,952 | 23,958 | 9,216 | 4,623 | 4,593 | 51,662 | 25,733 | 25,929 |

Note: Modified race data.

Sources: Alaska Department of Labor and Workforce Development, Research and Analysis Section; and U.S. Census Bureau

Table 1.21**Alaska Population by Age, Race (Alone or in Combination), Ethnicity, and Sex, July 1, 2014**

| Age | Total Responses | | | White Alone or in Combination | | | Alaska Native or Amer. Indian Alone or in Comb. | | | Black or African American Alone or in Combination | | |
|--------------|-----------------|----------------|----------------|-------------------------------|----------------|----------------|---|---------------|---------------|---|---------------|---------------|
| | Total | Male | Female | Total | Male | Female | Total | Male | Female | Total | Male | Female |
| 0-4 | 61,734 | 31,577 | 30,157 | 36,274 | 18,476 | 17,798 | 15,060 | 7,691 | 7,369 | 4,216 | 2,188 | 2,028 |
| 5-9 | 62,830 | 32,587 | 30,243 | 37,269 | 19,339 | 17,930 | 14,722 | 7,703 | 7,019 | 4,003 | 2,077 | 1,926 |
| 10-14 | 58,701 | 30,118 | 28,583 | 34,737 | 17,936 | 16,801 | 13,430 | 6,845 | 6,585 | 3,680 | 1,861 | 1,819 |
| 15-19 | 54,520 | 28,446 | 26,074 | 32,777 | 17,146 | 15,631 | 12,540 | 6,531 | 6,009 | 3,333 | 1,743 | 1,590 |
| 20-24 | 59,220 | 31,852 | 27,368 | 37,585 | 20,617 | 16,968 | 11,866 | 5,875 | 5,991 | 4,213 | 2,548 | 1,665 |
| 25-29 | 61,918 | 32,190 | 29,728 | 41,559 | 21,855 | 19,704 | 11,323 | 5,651 | 5,672 | 3,322 | 1,898 | 1,424 |
| 30-34 | 59,618 | 30,665 | 28,953 | 41,472 | 21,710 | 19,762 | 9,920 | 4,894 | 5,026 | 3,049 | 1,739 | 1,310 |
| 35-39 | 49,443 | 25,444 | 23,999 | 34,475 | 17,987 | 16,488 | 8,022 | 4,030 | 3,992 | 2,354 | 1,369 | 985 |
| 40-44 | 47,420 | 24,447 | 22,973 | 33,622 | 17,558 | 16,064 | 7,255 | 3,676 | 3,579 | 1,992 | 1,136 | 856 |
| 45-49 | 48,290 | 24,900 | 23,390 | 34,348 | 17,934 | 16,414 | 7,756 | 3,933 | 3,823 | 1,862 | 1,086 | 776 |
| 50-54 | 56,488 | 29,288 | 27,200 | 41,586 | 21,868 | 19,718 | 8,490 | 4,192 | 4,298 | 1,928 | 1,057 | 871 |
| 55-59 | 55,360 | 28,362 | 26,998 | 42,323 | 21,997 | 20,326 | 7,497 | 3,619 | 3,878 | 1,744 | 967 | 777 |
| 60-64 | 45,506 | 23,911 | 21,595 | 35,242 | 18,950 | 16,292 | 5,888 | 2,889 | 2,999 | 1,338 | 730 | 608 |
| 65-69 | 30,463 | 16,087 | 14,376 | 23,653 | 12,891 | 10,762 | 3,990 | 1,890 | 2,100 | 743 | 375 | 368 |
| 70-74 | 18,446 | 9,409 | 9,037 | 14,369 | 7,525 | 6,844 | 2,517 | 1,217 | 1,300 | 432 | 186 | 246 |
| 75-79 | 11,011 | 5,382 | 5,629 | 8,247 | 4,211 | 4,036 | 1,637 | 753 | 884 | 340 | 146 | 194 |
| 80-84 | 7,052 | 3,137 | 3,915 | 5,256 | 2,469 | 2,787 | 1,116 | 436 | 680 | 185 | 76 | 109 |
| 85+ | 5,988 | 2,202 | 3,786 | 4,737 | 1,747 | 2,990 | 720 | 280 | 440 | 152 | 48 | 104 |
| Total | 794,008 | 410,004 | 384,004 | 539,531 | 282,216 | 257,315 | 143,749 | 72,105 | 71,644 | 38,886 | 21,230 | 17,656 |

| Age | Asian Alone or in Combination | | | Native Hawaiian or Pac. Is. Alone or in Combination | | | Hispanic or Latino Origin | | |
|--------------|-------------------------------|---------------|---------------|---|--------------|--------------|---------------------------|---------------|---------------|
| | Total | Male | Female | Total | Male | Female | Total | Male | Female |
| 0-4 | 4,612 | 2,409 | 2,203 | 1,572 | 813 | 759 | 6,008 | 3,058 | 2,950 |
| 5-9 | 5,159 | 2,635 | 2,524 | 1,677 | 833 | 844 | 4,853 | 2,461 | 2,392 |
| 10-14 | 5,379 | 2,703 | 2,676 | 1,475 | 773 | 702 | 4,290 | 2,303 | 1,987 |
| 15-19 | 4,626 | 2,353 | 2,273 | 1,244 | 673 | 571 | 4,204 | 2,182 | 2,022 |
| 20-24 | 4,404 | 2,276 | 2,128 | 1,152 | 536 | 616 | 5,027 | 2,883 | 2,144 |
| 25-29 | 4,488 | 2,190 | 2,298 | 1,226 | 596 | 630 | 4,816 | 2,649 | 2,167 |
| 30-34 | 4,101 | 1,787 | 2,314 | 1,076 | 535 | 541 | 4,388 | 2,352 | 2,036 |
| 35-39 | 3,742 | 1,636 | 2,106 | 850 | 422 | 428 | 3,294 | 1,708 | 1,586 |
| 40-44 | 3,864 | 1,741 | 2,123 | 687 | 336 | 351 | 2,778 | 1,412 | 1,366 |
| 45-49 | 3,691 | 1,638 | 2,053 | 633 | 309 | 324 | 2,440 | 1,205 | 1,235 |
| 50-54 | 3,866 | 1,828 | 2,038 | 618 | 343 | 275 | 2,357 | 1,147 | 1,210 |
| 55-59 | 3,376 | 1,587 | 1,789 | 420 | 192 | 228 | 1,872 | 957 | 915 |
| 60-64 | 2,749 | 1,206 | 1,543 | 289 | 136 | 153 | 1,367 | 685 | 682 |
| 65-69 | 1,901 | 839 | 1,062 | 176 | 92 | 84 | 885 | 433 | 452 |
| 70-74 | 1,034 | 440 | 594 | 94 | 41 | 53 | 506 | 225 | 281 |
| 75-79 | 726 | 246 | 480 | 61 | 26 | 35 | 319 | 153 | 166 |
| 80-84 | 459 | 142 | 317 | 36 | 14 | 22 | 227 | 84 | 143 |
| 85+ | 352 | 117 | 235 | 27 | 10 | 17 | 161 | 63 | 98 |
| Total | 58,529 | 27,773 | 30,756 | 13,313 | 6,680 | 6,633 | 49,792 | 25,960 | 23,832 |

Note: Modified race data. "Total Responses" are greater than total population because individuals may report more than one race group.

Sources: Alaska Department of Labor and Workforce Development, Research and Analysis Section; and U.S. Census Bureau

Table 1.22

Alaska Population by Age, Race (Alone), and Sex, July 1, 2015

| Age | Total Population | | | White Alone | | | Alaska Native or American Indian Alone | | | Black or African American Alone | | |
|--------------|------------------|----------------|----------------|----------------|----------------|----------------|--|---------------|---------------|---------------------------------|---------------|---------------|
| | Total | Male | Female | Total | Male | Female | Total | Male | Female | Total | Male | Female |
| 0-4 | 53,054 | 27,081 | 25,973 | 29,605 | 15,020 | 14,585 | 10,216 | 5,189 | 5,027 | 2,221 | 1,146 | 1,075 |
| 5-9 | 54,164 | 28,051 | 26,113 | 30,169 | 15,613 | 14,556 | 10,184 | 5,306 | 4,878 | 1,904 | 986 | 918 |
| 10-14 | 50,898 | 26,105 | 24,793 | 28,441 | 14,732 | 13,709 | 9,536 | 4,871 | 4,665 | 1,844 | 962 | 882 |
| 15-19 | 48,085 | 25,214 | 22,871 | 27,102 | 14,268 | 12,834 | 9,277 | 4,863 | 4,414 | 1,929 | 1,029 | 900 |
| 20-24 | 52,925 | 28,839 | 24,086 | 32,797 | 18,310 | 14,487 | 8,484 | 4,267 | 4,217 | 3,281 | 2,078 | 1,203 |
| 25-29 | 58,223 | 30,541 | 27,682 | 37,821 | 20,153 | 17,668 | 9,001 | 4,537 | 4,464 | 2,739 | 1,664 | 1,075 |
| 30-34 | 56,971 | 29,569 | 27,402 | 38,877 | 20,586 | 18,291 | 7,866 | 4,009 | 3,857 | 2,491 | 1,453 | 1,038 |
| 35-39 | 47,843 | 24,748 | 23,095 | 32,831 | 17,286 | 15,545 | 6,443 | 3,289 | 3,154 | 2,078 | 1,245 | 833 |
| 40-44 | 43,986 | 22,743 | 21,243 | 30,496 | 16,046 | 14,450 | 5,771 | 2,960 | 2,811 | 1,707 | 965 | 742 |
| 45-49 | 45,308 | 23,355 | 21,953 | 31,941 | 16,679 | 15,262 | 6,058 | 3,087 | 2,971 | 1,608 | 969 | 639 |
| 50-54 | 52,602 | 27,398 | 25,204 | 38,141 | 20,160 | 17,981 | 7,039 | 3,521 | 3,518 | 1,737 | 981 | 756 |
| 55-59 | 53,122 | 27,400 | 25,722 | 40,242 | 21,097 | 19,145 | 6,267 | 3,021 | 3,246 | 1,536 | 866 | 670 |
| 60-64 | 45,591 | 23,807 | 21,784 | 35,081 | 18,754 | 16,327 | 5,097 | 2,487 | 2,610 | 1,306 | 703 | 603 |
| 65-69 | 31,492 | 16,620 | 14,872 | 24,386 | 13,256 | 11,130 | 3,580 | 1,695 | 1,885 | 669 | 365 | 304 |
| 70-74 | 19,100 | 9,751 | 9,349 | 14,801 | 7,769 | 7,032 | 2,261 | 1,065 | 1,196 | 449 | 205 | 244 |
| 75-79 | 11,165 | 5,492 | 5,673 | 8,421 | 4,301 | 4,120 | 1,444 | 661 | 783 | 321 | 140 | 181 |
| 80-84 | 7,012 | 3,148 | 3,864 | 5,235 | 2,481 | 2,754 | 948 | 369 | 579 | 184 | 75 | 109 |
| 85+ | 6,084 | 2,265 | 3,819 | 4,756 | 1,803 | 2,953 | 685 | 253 | 432 | 141 | 49 | 92 |
| Total | 737,625 | 382,127 | 355,498 | 491,143 | 258,314 | 232,829 | 110,157 | 55,450 | 54,707 | 28,145 | 15,881 | 12,264 |

| Age | Asian Alone | | | Native Hawaiian or Pacific Islander Alone | | | Two or More Races | | |
|--------------|---------------|---------------|---------------|---|--------------|--------------|-------------------|---------------|---------------|
| | Total | Male | Female | Total | Male | Female | Total | Male | Female |
| 0-4 | 2,612 | 1,351 | 1,261 | 912 | 473 | 439 | 7,488 | 3,902 | 3,586 |
| 5-9 | 2,956 | 1,519 | 1,437 | 1,040 | 513 | 527 | 7,911 | 4,114 | 3,797 |
| 10-14 | 3,401 | 1,665 | 1,736 | 959 | 473 | 486 | 6,717 | 3,402 | 3,315 |
| 15-19 | 3,339 | 1,707 | 1,632 | 860 | 473 | 387 | 5,578 | 2,874 | 2,704 |
| 20-24 | 3,251 | 1,689 | 1,562 | 794 | 384 | 410 | 4,318 | 2,111 | 2,207 |
| 25-29 | 3,715 | 1,829 | 1,886 | 969 | 443 | 526 | 3,978 | 1,915 | 2,063 |
| 30-34 | 3,374 | 1,469 | 1,905 | 896 | 426 | 470 | 3,467 | 1,626 | 1,841 |
| 35-39 | 3,067 | 1,277 | 1,790 | 685 | 350 | 335 | 2,739 | 1,301 | 1,438 |
| 40-44 | 3,348 | 1,500 | 1,848 | 568 | 272 | 296 | 2,096 | 1,000 | 1,096 |
| 45-49 | 3,367 | 1,473 | 1,894 | 488 | 244 | 244 | 1,846 | 903 | 943 |
| 50-54 | 3,411 | 1,594 | 1,817 | 476 | 258 | 218 | 1,798 | 884 | 914 |
| 55-59 | 3,132 | 1,491 | 1,641 | 314 | 158 | 156 | 1,631 | 767 | 864 |
| 60-64 | 2,618 | 1,142 | 1,476 | 248 | 118 | 130 | 1,241 | 603 | 638 |
| 65-69 | 1,906 | 809 | 1,097 | 160 | 83 | 77 | 791 | 412 | 379 |
| 70-74 | 1,061 | 454 | 607 | 95 | 45 | 50 | 433 | 213 | 220 |
| 75-79 | 701 | 253 | 448 | 40 | 20 | 20 | 238 | 117 | 121 |
| 80-84 | 438 | 146 | 292 | 34 | 13 | 21 | 173 | 64 | 109 |
| 85+ | 363 | 111 | 252 | 16 | 8 | 8 | 123 | 41 | 82 |
| Total | 46,060 | 21,479 | 24,581 | 9,554 | 4,754 | 4,800 | 52,566 | 26,249 | 26,317 |

Note: Modified race data.

Sources: Alaska Department of Labor and Workforce Development, Research and Analysis Section; and U.S. Census Bureau

Table 1.23**Alaska Population by Age, Race (Alone or in Combination), Ethnicity, and Sex, July 1, 2015**

| Age | Total Responses | | | White Alone or in Combination | | | Alaska Native or Amer. Indian Alone or in Comb. | | | Black or African American Alone or in Combination | | |
|--------------|-----------------|----------------|----------------|-------------------------------|----------------|----------------|---|---------------|---------------|---|---------------|---------------|
| | Total | Male | Female | Total | Male | Female | Total | Male | Female | Total | Male | Female |
| 0-4 | 61,584 | 31,537 | 30,047 | 36,261 | 18,497 | 17,764 | 14,772 | 7,572 | 7,200 | 4,284 | 2,224 | 2,060 |
| 5-9 | 63,097 | 32,685 | 30,412 | 37,147 | 19,243 | 17,904 | 14,844 | 7,741 | 7,103 | 4,087 | 2,128 | 1,959 |
| 10-14 | 58,401 | 29,915 | 28,486 | 34,414 | 17,743 | 16,671 | 13,370 | 6,845 | 6,525 | 3,658 | 1,839 | 1,819 |
| 15-19 | 54,251 | 28,382 | 25,869 | 32,150 | 16,859 | 15,291 | 12,705 | 6,641 | 6,064 | 3,302 | 1,715 | 1,587 |
| 20-24 | 57,609 | 31,135 | 26,474 | 36,612 | 20,165 | 16,447 | 11,293 | 5,610 | 5,683 | 4,253 | 2,572 | 1,681 |
| 25-29 | 62,495 | 32,577 | 29,918 | 41,398 | 21,851 | 19,547 | 11,644 | 5,805 | 5,839 | 3,455 | 1,993 | 1,462 |
| 30-34 | 60,702 | 31,321 | 29,381 | 41,985 | 22,028 | 19,957 | 10,146 | 5,072 | 5,074 | 3,063 | 1,735 | 1,328 |
| 35-39 | 50,789 | 26,149 | 24,640 | 35,302 | 18,456 | 16,846 | 8,278 | 4,148 | 4,130 | 2,470 | 1,451 | 1,019 |
| 40-44 | 46,245 | 23,813 | 22,432 | 32,354 | 16,914 | 15,440 | 7,242 | 3,675 | 3,567 | 1,957 | 1,093 | 864 |
| 45-49 | 47,292 | 24,319 | 22,973 | 33,588 | 17,480 | 16,108 | 7,445 | 3,778 | 3,667 | 1,825 | 1,079 | 746 |
| 50-54 | 54,497 | 28,323 | 26,174 | 39,704 | 20,924 | 18,780 | 8,423 | 4,187 | 4,236 | 1,918 | 1,064 | 854 |
| 55-59 | 54,834 | 28,204 | 26,630 | 41,668 | 21,762 | 19,906 | 7,564 | 3,627 | 3,937 | 1,692 | 950 | 742 |
| 60-64 | 46,894 | 24,437 | 22,457 | 36,176 | 19,297 | 16,879 | 6,120 | 2,980 | 3,140 | 1,422 | 754 | 668 |
| 65-69 | 32,336 | 17,067 | 15,269 | 25,084 | 13,625 | 11,459 | 4,256 | 2,050 | 2,206 | 747 | 416 | 331 |
| 70-74 | 19,542 | 9,972 | 9,570 | 15,159 | 7,956 | 7,203 | 2,649 | 1,259 | 1,390 | 481 | 215 | 266 |
| 75-79 | 11,407 | 5,608 | 5,799 | 8,631 | 4,408 | 4,223 | 1,645 | 758 | 887 | 338 | 147 | 191 |
| 80-84 | 7,188 | 3,213 | 3,975 | 5,395 | 2,543 | 2,852 | 1,095 | 425 | 670 | 198 | 80 | 118 |
| 85+ | 6,209 | 2,306 | 3,903 | 4,859 | 1,836 | 3,023 | 783 | 289 | 494 | 155 | 51 | 104 |
| Total | 795,372 | 410,963 | 384,409 | 537,887 | 281,587 | 256,300 | 144,274 | 72,462 | 71,812 | 39,305 | 21,506 | 17,799 |

| Age | Asian Alone or in Combination | | | Native Hawaiian or Pac. Is. Alone or in Combination | | | Hispanic or Latino Origin | | |
|--------------|-------------------------------|---------------|---------------|---|--------------|--------------|---------------------------|---------------|---------------|
| | Total | Male | Female | Total | Male | Female | Total | Male | Female |
| 0-4 | 4,691 | 2,430 | 2,261 | 1,576 | 814 | 762 | 5,854 | 2,983 | 2,871 |
| 5-9 | 5,248 | 2,686 | 2,562 | 1,771 | 887 | 884 | 5,047 | 2,569 | 2,478 |
| 10-14 | 5,433 | 2,716 | 2,717 | 1,526 | 772 | 754 | 4,302 | 2,275 | 2,027 |
| 15-19 | 4,832 | 2,482 | 2,350 | 1,262 | 685 | 577 | 4,136 | 2,178 | 1,958 |
| 20-24 | 4,351 | 2,258 | 2,093 | 1,100 | 530 | 570 | 5,173 | 2,920 | 2,253 |
| 25-29 | 4,722 | 2,321 | 2,401 | 1,276 | 607 | 669 | 4,918 | 2,696 | 2,222 |
| 30-34 | 4,348 | 1,922 | 2,426 | 1,160 | 564 | 596 | 4,554 | 2,457 | 2,097 |
| 35-39 | 3,828 | 1,645 | 2,183 | 911 | 449 | 462 | 3,535 | 1,869 | 1,666 |
| 40-44 | 3,956 | 1,785 | 2,171 | 736 | 346 | 390 | 2,800 | 1,415 | 1,385 |
| 45-49 | 3,798 | 1,666 | 2,132 | 636 | 316 | 320 | 2,550 | 1,282 | 1,268 |
| 50-54 | 3,825 | 1,806 | 2,019 | 627 | 342 | 285 | 2,407 | 1,152 | 1,255 |
| 55-59 | 3,468 | 1,657 | 1,811 | 442 | 208 | 234 | 1,882 | 942 | 940 |
| 60-64 | 2,856 | 1,261 | 1,595 | 320 | 145 | 175 | 1,473 | 765 | 708 |
| 65-69 | 2,045 | 874 | 1,171 | 204 | 102 | 102 | 916 | 424 | 492 |
| 70-74 | 1,146 | 496 | 650 | 107 | 46 | 61 | 545 | 266 | 279 |
| 75-79 | 740 | 269 | 471 | 53 | 26 | 27 | 345 | 162 | 183 |
| 80-84 | 457 | 149 | 308 | 43 | 16 | 27 | 229 | 98 | 131 |
| 85+ | 387 | 120 | 267 | 25 | 10 | 15 | 184 | 71 | 113 |
| Total | 60,131 | 28,543 | 31,588 | 13,775 | 6,865 | 6,910 | 50,850 | 26,524 | 24,326 |

Note: Modified race data. "Total Responses" are greater than total population because individuals may report more than one race group.

Sources: Alaska Department of Labor and Workforce Development, Research and Analysis Section; and U.S. Census Bureau